

The North's *Original* Free Arts Newspaper + www.artwork.co.uk

artWORK

Number 219 Pick up your own FREE copy and find out what's really happening in the arts Winter 2021/22



'Street Market' by Joan Eardley, in ink and wax crayon, from Glasgow's Cyril Gerber/Compass Gallery collection.

**INSIDE: Build your own castle :: Fair Exchange
In the Frame for 40 years :: Stranraer revived**

The

Aberdeen

ABERDEEN ART GALLERY, Schoolhill, AB10 1FQ, 01224 523 700

Until January 31 2022 (Online) 100 Years of Insulin: The Aberdeen Story.

Until May 18 2022 Joan Eardley. Works on Paper. Artist's work represents figuration and landscape in the pivotal post-war period of Scottish art

ABERDEEN MARITIME MUSEUM, Shiprow, AB11 5BY, 01224 337700

Until May 18 2022 Online - Joan Eardley: Works on Paper. range and inventiveness in figuration and landscape

GALLERY HEINZEL, 24 Thistle Street, AB10 1XD, 01224 625 629, www.galleryheinzel.com, info@galleryheinzel.com

Contemporary Scottish art Until November 13 Winter exhibition

GRAY'S SCHOOL OF ART, Robert Gordon University, Garthdee Road, AB10 7QD, www.rgu.ac.uk/areas-of-study/subjects/art-and-design

ARTS CENTRE & THEATRE (ACT) ABERDEEN, 33 King Street, AB24 5AA, 01224 635 208

THE ART GALLERY, Grampian Hospitals Art Trust, Aberdeen Royal Infirmary, Foresterhill, AB25 2ZN, 01224 552 429

ROSIES, 45-49 Holburn Street, AB10 6BR, 01224 577 325

Crafts, art and gifts also framing PEACOCK VISUAL ARTS, 21 Castle Street, AB11 5BQ, 01224 639 539

RENDEZVOUS GALLERY, 100 Forest Avenue, AB15 4TL, 01224 323 247

Until November 27 Ade Adesina, Adrian Wiszniewski, John Byrne, John Bulloch Souter, Alberto Morrocco, Joyce Cairns, Ann Patrick, Arthur Watson, Lennox Dunbar, Marian Leven, Frances Walker, Michael Waigh, Gordon Bryce, Pablo Picasso, Jennifer McRae, Tom Mabon., Works on Paper. Artists also include Joe Fan and Will Maclean

PROVOST SKENE'S HOUSE, Guestrow, (between Broad Street and Flourmill Lane), AB10 1AS, 01224 641 086

TOLBOOTH MUSEUM, Castle Street, AB10 1EX, 01224 621 167 CLAREMONT STUDIO, 66 Claremont Street, AB10 6QY, 01224 596 999

NICOLE PORTER GALLERY, 88 King Street, AB24 5BA, 01224 566 477

Aberdeenshire

BRAEMAR GALLERY, Mar Road, Braemar, AB35 5YL, 01339 741 681, www.braemargallery.co.uk, info@braemargallery.co.uk

Oil paintings, watercolours, etchings, engravings, sculpture, jewellery and cards

LARKS GALLERY, 10 Braemar Road, Ballater, AB35 5RL, 01339 755 888, www.larksgallery.com

Paintings, sculpture, ceramics, glass, textiles, jewellery and photography

THE LOST GALLERY, Aldachuie, Strathdon, AB36 8UJ, 01975 651 287, www.lostgallery.co.uk, Jean@lostgallery.co.uk

TOLQUHON GALLERY, Tolquhon, Tarves, Ellon, AB41 7LP, 01651 842 343, www.tolquhon-gallery.co.uk

NORTH EAST OPEN STUDIOS, www.northeastopenstudios.co.uk, info@northeastopenstudios.co.uk

A non-profit organisation promoting Arts, Crafts and galleries in the North East of Scotland

ALBERTINO COSTA SCULPTURES, 5 Milltimber Brae East, Milltimber, AB13 0DN, 07917 482 351, www.albertinocostasculptures.com, costasculptures@gmail.com

BALLATER GALLERY, 46 Bridge Street, Ballater, AB35 5QD, 01339 755444

EION STEWART FINE ART, 55 Allardice Street, Stonehaven, AB39 2AB, 01569 785606, www.eionstewartfineart.com, art@eionstewartfineart.com

Picture framing specialists and one of the main suppliers to top artists, photographers and businesses

From November 19 Reflections.

COUNTRY FRAMES GALLERY, Leslie, Inch, AB52 6PA, 01464 820389, www.countryframes.co.uk, countryframes@btconnect.com

November 16 - December 31 The Winter Show.

THE BUTTERWORTH GALLERY, Ballergie, Near Aboyne, AB34 5DP, 01339 886 104

Paintings and prints by Howard

Butterworth and daughter Mary

GARIOCH HERITAGE CENTRE, Loco Works Road, Inverurie, AB51 4FY, 01467 621855, www.gariochheritage.co.uk, info@gariochheritage.co.uk

Until November 21 Brick Wonders in LEGO. Come along and travel around the World in LEGO bricks.

JOYCE TAYLOR STUDIO, Braeside Croft, Hythie, Mintlaw, Peterhead, AB42 4HH, 01779 622989, www.joycetaylor.co.uk, info@joycetaylor.co.uk

LANG BYRE GALLERY, Woodend Barn Arts Centre, Burn O'Bennie, Banochry, AB31 5QA, 01330 825 431

MILTON ART GALLERY, Milton of Crathes, Nr Banochry, AB31 5QH, 01330 844 664

STARFISH STUDIO, 3 Anchor Lane, Johnshaven, DD10 0EN, 01561 360 118

Original art and handmade ceramics, jewellery, glass, textiles, wood and more from all over the British Isles. Featuring paintings by Kate MacKenzie

THE MUSEUM OF SCOTTISH LIGHTHOUSES, Kinnaird Head, Fraserburgh, AB43 9DU, 01346 511 022

Purpose-built museum with multi-screen technology. Scotland's first lighthouse, built 1781. Open all year. Check holiday opening times

PETERHEAD MARITIME HERITAGE, South Road, Peterhead, AB42 2UP, 01779 473000

Experience Peterhead's maritime life past and present

GALLERY1, 2B Garioch Shopping Centre, Constitution Street, Inverurie, AB51 4UY

HADDO ARTS, Haddo House, Methlick, Ellon, AB41 7EQ, www.hhocs.org.uk

COWDEN STUDIO, Cowden Farm, Drumlithie, AB39 3YN, 01569 740039

Aberfeldy

ABERFELDY GALLERY, 9 Kenmore Street, PH15 2BL, 01887 829 129, www.aberfeldygallery.co.uk

Until November 15 Dot Walker. Drawings and paintings

WATERMILL GALLERY, Mill Street, PH15 2BG, 01887 822 896, www.aberfeldywatermill.com, info@aberfeldywatermill.com

Art Gallery, Bookshop, Coffee & Music Shop

Until November 7 Julianne Barclay. Essence. First solo

ARTISANAND, 13-15 Bank St, PH15 2BB, 01887 822 700, www.artisanand.co.uk

A contemporary gallery showcasing local scottish arts and crafts

Until November 26 Moy Mackay, Dylan Bier, Fiona Haddow, William King & more.

Inbetween. Mixed exhibition

November 27 - December 31 Joy. Mixed exhibition

THE ARTIST STUDIO, 126 High Street, AB38 9NX, 01340 881 880

THE GALLERY IN ABERLOUR & SPEY SPORT, Gallery in Scotland, 79 High Street, Speyside, AB38 9QB, 01340 871 457, www.thegalleryinaberlour.com, kerystewart122@icloud.com

Picture framing, paintings and pictures. Home interiors, handcrafted gifts

Alloa

THE GALLERY, Gordon McFarlane, Watchmaker, 41 Mill Street, FK10 1DW, 01259 723 303

Work from Ochil Craft Association

RESONATE TOGETHER, Units A3-A4, North Castle Street, FK10 1EU, 01259 928 014

Angus

KINBLETHMONT GALLERY, Arbroath, DD11 4RW, 01241 890 204, www.kinblethmontgallery.co.uk, kinblethmont@btinternet.com

THE MEFFAN, 20 West High Street, Forfar, DD8 1BB, 01307 476 482, archive.angus.gov.uk/historyaa/museums/meffan/, ForfarMuseum@angusalive.scot

Until January 15 2022 Royal Scottish Academy The Ages of Wonder : The Art of Etching on Tour. Tells the story of fine art printmaking in Scotland, from the 18th Century work of Alexander Runciman to the best printmakers of the present day

SPRINGFIELD CREATIVE ARTS, Dr. Fran Marquis, 4 Springfield Terrace, Arbroath,

Fair exchange for makers

THE SCOTTISH Design Exchange (SDX), Edinburgh's leading social enterprise gallery and retail outlet for artists and makers, is on the move. Located originally in Edinburgh's Ocean Terminal in Leith before moving to the city centre, the enterprise has now found its new home in the former Church of Scotland bookshop on George Street.

Founded in 2015, the Scottish Design Exchange came about after Borderer Lynzi Leroy (pictured) noted all the empty shops on the High Street. following the 2008 recession.

"Seeing all the empty shops I thought there were better ways to share space. Also from going to France a lot to visit family, I could see that there was always local art available in every region, but nowhere in Scotland where you could find local art that was affordable".

So with her own money and a lot of determination, SDX was launched with 30 artists at Edinburgh's Ocean Terminal retail centre.

"I wanted to help artists and designers based in Scotland sell their work from a high footfall store. The concept was to provide the artists with an

affordable space, which they would pay a monthly rental fee for, then keep a hundred per cent of what they sell. We started with 30 artists and now support over 300 artists and designers from our two stores in Edinburgh and Glasgow.

"I wanted the Scottish Design Exchange to be a social enterprise project, and it was set up to help and support artists, not to profit from them. I am really proud of what we have achieved, having sold over £ 3.5m worth of products since we launched, all of which has gone direct to the makers".

SDX moved to George Street in Edinburgh city centre after the first Covid lockdown. Lynzi says:

"We took on the old Laura Ashley unit on a short term lease and business has been really good,

but not what it would have been pre-Covid. Last year, restrictions on people travelling into Edinburgh before Christmas certainly impacted sales and we are hoping our sales increase this year with Christmas events planned for the city centre".

The exchange's business development manager, Graeme Murdoch, states:

"Moving to George Street gave us the opportunity to finally be in the heart of Edinburgh's City and give our wonderful community of artists and designers the chance to compete against the regular, same old brands we see in every city.

"Selling unique and authentic Scottish products by some of Scotland's most beautifully creative artists and designers is an experience that is lacking from many high streets and we are all too glad to provide it. Moving again, our new premises on George Street gives the chance to build on the success we've experienced!

"SDX has grown in leaps and bounds since moving to George Street and much of that has to do with our determination to survive the pandemic to ensure that the 300 hundred artists and designers who sell through SDX continue to have a steady source of income".

With restrictions easing and travel slowly resuming, Lynzi is positive about the future.

"It's been great to see the slow return of tourists and locals to the city centre and the feedback we've had from customers has been incredible. There is nothing like SDX in the city centre and it's great to be able to promote the work of over 150 artists and designers from Scotland, who make truly unique products.

"I do think Covid has had an impact on people buying locally-made products and also thinking of the sustainability of the products they buy. Our customers love that they can buy just about everything they want for their home, from our store, made by local makers. We really are much more than a gallery and very far from the tartan tat shops you see all over town.

"Edinburgh city centre needs more independent stores. Locals want to feel the city is for them and not just for tourists. I would like to see the independent stores that are currently in the city centre work together and shout out loud about



what they do. I have just recently joined the board of Essential Edinburgh and I hope to use my time to help bring local independent stores together".

And the future for SDX? "SDX has a really strong future ahead", says Lynzi. "Our new premises are at 117-119 George Street, and we're really excited as it has five huge glass windows at street level, allowing us to create a beautiful frontage to promote all the fantastic products we have in store. The new store also allows wheelchair access.

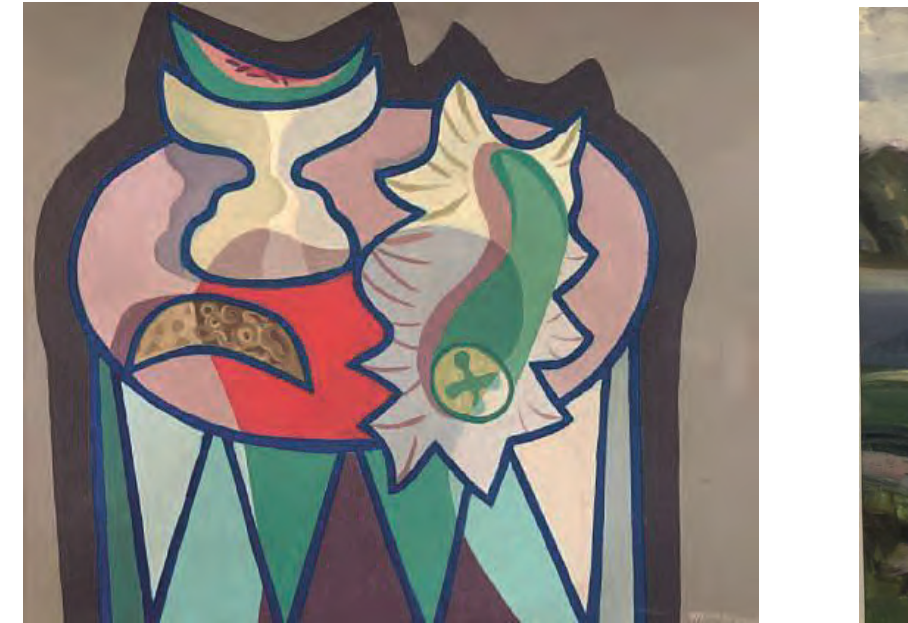
"We need to get through to next summer to see a real recovery from the impact Covid has had on all business, but I am really proud of my team for working so hard to keep SDX going through such hard times. We are in a great place and we are looking at opening new stores throughout Scotland in the new year".

FRANCES ANDERSON
Scottish Design Exchange,
117-119 George Street, Edinburgh EH2 4JN
www.scottishdesignexchange.com



Gerber Fine Art

19th to 21st Century British Paintings, Drawings & Sculpture



Robert MacBryde *Green & Red Still Life* oil on canvas

Compass Gallery



Alma Wolfson *Balvicar Sound* oil on canvas

178 West Regent Street Glasgow G2 4RL 0141 221 3095 / 221 6370
www.gerberfineart.co.uk www.compassgallery.co.uk Tues-Fri 10am-4pm Sat 11am-4pm



Editorial Comment

ArtWork PO Box 3 AB41 9EA :: artwork@famedram.com

At COP26 one voice stood out

OF THE MANY thousands of voices that rang out from Glasgow during the COP26 circus one has stood out from all others for the good, plain sense that it has spoken.

The much missed former US President Obama had one message above all others to offer the assembled masses: Try listening!

It's one that a whole host of virtue signallers, agitators and holier than thous could take to heart.

Of course the government needs to take action to encourage folk to insulate their houses, but preventing ordinary folk from going about their business by blocking their path is not the way to persuade them.

Many of the fashionable solutions to the climate change challenge do not stand too close scrutiny.

Re-wilding Scotland sounds wonderful – until you look more closely. Ask who exactly is behind it. In some cases the motives are of the purest. The evidence would seem to show that Scotland's largest private landowner, Mr Anders Povlsen, goes about the business in a pretty responsible way, taking care to ensure that estate workers are not thrown on to the scrap heap in the rush to be green.

Evidence suggests that other, less altruistic forces are

coming into play. The attractions of carbon offsetting and other 'pseudo-green' ruses are proving too attractive to those nice men in their hedge funds and private equity jets.

The rush to those oh-so-virtuous battery driven cars could do with slightly closer scrutiny as well. All those rare metals like cobalt – where do they come from? Who owns the mines? (not China, surely?) And what about the poor folk who work them for washers – almost literally?

In the push to popularise such supposedly environmentally friendly transport options, many of the damaging consequences of their use – the residues from their tyres, their brakes and other by products are conveniently forgotten.

Research has shown that very few people believe that they need to make any real changes to the way they live. Many homes are still being heated to an absurd hot house level (24 degrees is talked of).

If one lesson of the Glasgow COP26 jamboree is that we ALL stop and listen, maybe *some* of those millions of air miles generated will not prove to have been wasted.

We might even overlook President Biden's 85 vehicle cavalcade and his four plane-loads of backroom staff.

A cultural shift to the right?

IT HAS BECOME fairly well apparent to everyone by now that we have a government in Westminster that likes to pick like-minded souls to fill vacancies, not just in government and the Civil Service, but in an increasing range of jobs in the public realm.

Our new minister of culture (!), the one-time novelist Ms Nadine Dorries, has made no secret of the fact that she wants to rid the BBC of any leftie influence – if not to rid us of the Corporation itself!

Right now there is a struggle on to prevent that great libertarian, the ex-editor of the *Daily Mail*, Paul Dacre, (owner of a nifty Highland estate) from taking over the top job at Ofcom. There have been repeated attempts to rig the selection process so that the 'right'

man gets the job.

The process has been noted in lesser jobs. A recent *Guardian* exposé revealed that a whole raft of British cultural institutions are having their boards filled with appointees favoured by Downing Street – bodies such as the National Maritime Museum and the National Portrait Gallery are mentioned.

The well worn response to the raising of concerns over this sort of gerrymandering is that matters such as this are of not interest to the man in the street, but all come under the canopy of the 'Westminster bubble.'

Perhaps we should have learned from the manoeuvring that led to the Brexit carry-on to be on our guard against these sorts of behind the scenes charades.

No controversy, please!

NEW RULES have just been introduced, it would seem, by one of our most illustrious universities.

In future, visiting academics planning to address the troops on the Glasgow campus must first submit the text to the university censors in case it could contain anything controversial.

The move is being made, it is understood, to avoid upsetting the tender feelings of sensitive students who need to be shielded from controversy and protected from anything that could upset long held beliefs.

Challenging views must be avoided at all costs.

Not more bread and circuses?

One time organic flour miller-cum-festival organiser Nick Jones knows a thing or two about providing both bread and circuses, so will next year's 'Unboxed' deliver either? – or both?

I SOMETIMES WONDER why more of our poets, with notable exceptions like William Blake, haven't railed against this country's demeaning status as an offshore Norman colony since 1066, when William and his henchmen, feudal overlords, took control of as much land as they could grab.

Especially now that I've listened to the Radio 3 Free Thinking programme 'Oceans, art, and pacific poetry'. It's an inspiring 'must-listen', including describing how poets in Papua New Guinea used their art to become politicians, and achieve independence from their colonial masters across the water in Australia.

Their poetry strengthened awareness, and pride in their country – no more exploitation of people or land! If you're the ailing, failing government of an all-washed-up-and-nowhere to go party, or nation, and the poets, luckily for you, haven't shown up, then one option is to have a go at another country, preferably one nearby (to keep supply lines short), and that possesses things worth having a go at, like great wine, croissants, garlic, or fish, perhaps.

Short of weapons, money, or political support? Then announce a knees-up or, as Juvenal put it in Rome back in second century, 'Bread and Circuses', to generate public approval, not by excellence in public service or public policy, but by pandering to the masses' base appetites, ideally with cakes, ale and circuses.

I took his advice fifty years ago, spending forty years milling the best stoneground, organic flour, for the bread (and cakes!), alongside a second career organising festivals, concerts, and exhibitions.

Most memorable?

A great, soggy, Lake District weekend of Edinburgh Fringe events

and more, under canvas, on the shores of Ullswater, in the early 1990s, when David Mellor, then Minister of Fun, supported a countrywide travelling circus of culture to celebrate the UK's chairing of the European Union.

Looking back to Napoleonic times, France opted for an 'Exposition des produits de l'industrie Française', providing "a panorama of the productions of the various branches of industry with a view to emulation".

Inaugurated in 1798, and continuing until 1849, these were intended, amongst other things, to win people over to the new regime. These Expositions inspired Prince Albert, who thought that Great Britain, with its vast Imperial hinterland, could and should do better.

Hence the Great Exhibition of 1851. A century later, in 1951, the Festival of Britain, brainchild of Labour cabinet minister Herbert Morrison, aimed to cheer everyone up after the privations of war, and showcase the best of British invention and creativity.

People flocked to the South Bank, agog at wonders like the Dome of Discovery, and the Skylon. It wasn't just London, there were events across the nation. People half-crushed by austerity and gloom had fun; and it made a spectacular setting as a showpiece for the inventiveness and genius of British science and technology.

Sadly, it proved rather too successful for the Tories' liking, so they pulled the plug early. Six years later, seems the feel-good factor had worn a bit thin. Although PM Macmillan tried to remind everyone that "You've never had it so good", most leaders prefer more stick and less carrot.

This time, allegedly, it's Theresa May wot done it, when, back in 2018, she commissioned what is now called

'Unboxed: Creativity in the UK', aka 'Festival UK2022' (until someone spotted the acronym!), aka 'Festival of Brexit'.

Cynics might be forgiven for thinking, just another ploy to distract attention from more government disasters and faux pas.

They could be wrong. Amongst others, The Poetry Society are on board, and the chair of 'Unboxed' is Dame Vicki Heywood, which gives me hope. She has a strong track record, having been an executive director of the Royal Shakespeare Company and the Royal Court Theatre, then chair of "14-18", a five year commemoration of the World War 1, and of the Royal Society of Arts.

Her choice of fellow board members is encouraging, drawn from science, technology, engineering, and the arts, and working in partnership with schools, communities, academia, industry and artists.

It's wide ranging in content, media, approach, and place, embracing innovative explorations including consciousness and dreams, astrophysics, the universe, and sustainable food production.

As you'd expect, the organisers are ramping the hyperbole to stratospheric levels, with promises of 'Our Place in Space'; 'Tour de Moon', 'GreenSpaceDarkSkies', 'Dandelion', and 'PoliNations'.

Take a look at the 'Unboxed' programme, see what you think. Maybe 'Unboxed' will release a Pandora's box of creative, innovative, game-changing ideas and inventions to challenge and transform. Preferably not curses as in Greek myth, but the blessings of the creative spirit...the true 'art and soul of both a good party, and good poetry!



artWORK
WINTER
ISSUE 2021
Subscription form
on page 2

artWORK
www.artwork.co.uk
West Highland
Wayfarer
www.westhighlandwayfarer.co.uk

THE Whisky
Trailer
www.whiskytrailer.co.uk

CHECK OUT
OUR OTHER
TITLES

mary ann rogers gallery



New paintings, prints, cards and unusual and beautiful gifts also GUESTS Linden Craven jewellery, Phil's Firepits and Northumbrian Wreaths

Christmas open days: Fri 26, Sat 27, Sun 28 Nov
& Sat 4, Sun 5 & Sat 11, Sun 12 Dec 2021 10am-5pm



mary ann rogers gallery, West Woodburn, Hexham, NE48 2SE
01434 270216 www.marogers.com

The

DD11 1EL, 01241 439 714, www.franmarquis.co.uk, info@franmarquis.co.uk
Regular weekends and week-days

Pottery Courses. Hand-building wheelwork, functional and sculpture

Monthly throughout the year
Ceramics Weekends in Arbroath.
THE CANVAS ART GALLERY, 81 East High Street, Forfar, DD8 2EQ, 01307 465 715

Originals, prints, quality picture framing. Unusual giftware and jewellery

MONTROSE MUSEUM & ART GALLERY, Panmure Place, Montrose, DD10 8HF, 01674 673232
Until January 22 2022

The Ages of Wonder: The Life School on Tour.

HOSPITALFIELD. Hospitalfield House, Arbroath, DD11 2NH, 01241 656 124

ARBROATH ART GALLERY, Arbroath Library, Hill Terrace, Arbroath, DD11 1AH, 01241 464545

Until December 4
Carnoustie Photo Group Exhibition.

Argyll

COWAL OPEN STUDIOS, PA23 8QU, www.cowalopenstudios.co.uk

RESIPOLE STUDIOS, Acharracle, PH36 4HX, 01967 431 506, www.resipolestudios.co.uk
New artspace with studios, gallery and framing service

Until December 3
Lucy Gray and Leonie Charlton. Recovering Ground. Collaboration

Until December 3
Andrew Squire, Ise Stumpf, Georgia Murray, Lotte Glob, Anna Raven, Helen Michie, Jane Rushton, Kate Foster, Amy Marshall, Richard Bracken and Tamsin Cunningham. All Things Connect.

TIGNABRUACH GALLERY, Seaside House, Tighnabruach, PA21 2DR, 01700 811 681, www.tiggallery.com, robbie@tiggallery.com

Original art, sculpture, glass, jewellery, poetry

THE HARBOUR GALLERY, Knap, Harbour Street, Tarbert, PA29 6UA, 01880 821170, www.theharbourgallery.com, info@theharbourgallery.com

COMFREY COTTAGE STUDIO, 1 Tayness, Kilmartin, PA31 8QF, anneamkwlison@gmail.com
Small gallery where there are an assortment of paintings on view, painted in various media

IONA HOSTEL, Lagandorain, Isle of Iona, PA76 6SW, 01681 700 642, www.ionahostel.co.uk, info@ionahostel.co.uk

The opportunity to focus on your artistic development in a quiet and elemental Hebridean landscape

THE ARCHWAY, 7 Union Street, Lochgilphead, PA31 8JS, 01546 606 894

STUDIO BARN ARGYLL, Leac Na Ban, Tayvallich, Lochgilphead, PA31 8PF, 01546 870 310
Seasonal exhibition of original art

FYNE STUDIOS - THE HIDDEN GALLERY, Newton, Strachur, (off the A886), PA27 8DB, 01369 860 379

Gallery of two Scottish artists Don McNeil & Jean Bell

JUNO DESIGN GALLERY, 159 Argyll Street, Dunoon, PA23 7DD, 01369 707 767

THE STABLE GALLERY, Church Square, Inveraray, PA32 8TY, 01499 302 800

Paintings, reproductions, greetings cards, exclusive post cards

IONA HERITAGE CENTRE, Isle of Iona, PA76 6SJ, 01681 700 576

IONA GALLERY AND POTTERY, Isle of Iona, PA76 6SW, 01681 700 439

ORSAY, 2 Stevenson Street, Oban, PA34 5NB, 01631 569 988

Jewellery, ceramics, glass metal, textiles, wood lights, cards
INVERBEG GALLERIES, Inverbeg, Argyll & Bute, Loch Lomond, G83 8PD, 01436 860 277

CAOL RUADH SCULPTURE PARK, Caol Ruadh, Colintrave, PA22 3AR, 07771 996656

Scottish sculpture park with work by Karen Scotland and Anne Edmonds offering a memorable starting point to explore art in the Argyll landscape

THE JETTY GALLERY, 100 George Street, Oban, PA34 5NR, 01631 570102

Continuously changing contemporary artwork - featuring paintings, sculpture, ceramics, glass, wood and jewellery by well established and emerging

talents

BENMORE BOTANIC GARDEN, Dunoon, PA23 8QU, 01369 706261

Ayr

MACLAURIN ART GALLERY, Rozelle Estate, Monument Road, KA7 4NQ, 01292 443 708, www.themaclaurin.org.uk/
Until December 23

The McKechnie Institute. Girvan's cultural hub, featuring a permanent display of artefacts highlighting the town's heritage.

Until January 9 2022
The Glasgow Society of Women Artists. Annual exhibition of paintings, also including this year some fine jewellery. www.gswa.org.uk

November 27 - January 16 2022
Riverside Studios Winter Craft Exhibition. Encourages and teaches all kinds of craft

ROZELLE HOUSE GALLERIES, Rozelle Park, Monument Road, KA7 4NQ, 01292 443 708, www.south-ayrshire.gov.uk/galleries/rozellehouse/

Ongoing
Online Stories. 22 works of Art and Sculpture from the South Ayrshire Council Collections

Ongoing
Alexander Goudie. Tam O' Shanter: A Tale Told in Pictures.

Ayrshire
OPEN STUDIOS AYRSHIRE, Venues throughout Ayrshire, www.openstudiosayrshire.com

Over 70 Ayrshire artists will open their studios to the public

ARRAN OPEN STUDIO, KA27, www.arranopenstudios.com

HARBOR ARTS CENTRE, 114-116 Harbour Street, Irvine, KA12 8EE, 01294 274 059, www.whatsonayrshire.com/harbourartscentre.html, harbourarts@north-ayrshire.gov.uk

MCKECHNIE INSTITUTE, Dalrymple Street, Girvan, KA26 9AE, 01465 713 643, www.south-ayrshire.gov.uk/galleries/mckechnie/

Until December 23
Girvan's Cultural Hub. Featuring a permanent display of artefacts highlighting the town's heritage

ART'N'JOY GALLERY AND PICTURE FRAMERS, 52 Hamilton Street, Saltcoats, North Ayrshire, KA51 5DS, 01294 472 222, www.artnjoy.co.uk

THE FRAMEWORK GALLERY, 83 Portland Street, Troon, KA10 6QU, 01292 316 144

Continuous mix of original paintings and printwork by a variety of artists

GLENBUCK ARTS, Glenbuck Cottage, Glenbuck, East Ayrshire, KA18 3SB, 01290 661 784

Regular display of sculptures, paintings and hand woven wall pieces. Sculpture Garden by the loch

CRAFT TOWN SCOTLAND, The Barony Centre, West Kilbride, KA23 9AW, 01294 829179

THE WELLINGTON GALLERY, 13 Wellington Street, Kilmarnock, KA13 1DW, 01563 523 176

Original paintings, prints and other artworks mainly from Scottish artists

ARTI FARTI EXHIBITION GALLERY, 48 Hamilton Street, Saltcoats, KA21 5DS, 01294 287207, www.arti-farti.co.uk, artifarti48@outlook.com

Originals & Limited Editions

Banff
DUFF HOUSE COUNTRY GALLERY, Duff House, AB45 3SX, 01261 818181, www.nationalgalleries.org/visit/duff-house

Until November 28
James Craig Annan, George Washington Wilson and James Valentine. The MacKinnon Collection. Historic photographs that captures a century of life in Scotland

Until February 20 2022
Ray Harryhausen. Titan of Cinema. Stop motion animation art

MEADOWLANDS GALLERY, 83 North Castle Street, AB45 1JJ, 01261 818 535, meadowlands-banff@aol.com

Douglas Heggie - New work

Banffshire
TOMINTOUL MUSEUM & VISITOR CENTRE, The Square, Tomintoul, AB37 9ET, 01309 673 701

TOMINTOUL GALLERY, 82 Main Street, Tomintoul, Ballindalloch, AB37 9HA, 01807 580 458

Batik fine art by Jane Lannagan, original art, prints, cards and

Still in the Frame – after 40 plus years

CAPTURED as a snapshot in time, a picture frame, rather like a photograph, lends a time line to a scene. Finally the painting, photograph, print – has found its place in time – and it is no longer just a figment of the artist's imagination. It is now packaged up and physically enclosed – ready to be sold.

Who makes these decisions and who helps the artist decide on these fundamental four corners, has an increasing relevance and importance to the artist today.

Which makes the time that framer and gallery owner Hugh Goring has been running his famed Perth gallery seem even more prescient.

For more than 42 years, Hugh has lovingly dedicated his time and skills to helping many artists of Scotland and has built up quite a name for himself in the process.

As a young lad of 24 he and his artist wife Julie pitted their bids on starting a business as picture framers in the centre of Perth.

A cash gift from Julie's father allowed them to make a start in business in 1979. It was either that or have a very flash wedding and a marquee. I asked Hugh if he's thought much of the alternative – how life might have turned out if they had gone for the big wedding instead?

Hugh laughs and says it might have been very different but there's no way he would have given up all the laughs and loves of arts, they have enjoyed over the years.

Now Hugh is looking back on his years in the frame with rose tinted specs, as he looks to selling the business early next year.

It has certainly has been a journey from the first beginnings at the back of a plumber's shop in 1979

to then moving to larger premises in 1991 where they were also able to show the work of many artists, from Marj Bond, Christine Woodside, Madeleine Hand and many more and – importantly

– becoming an online pioneer of the art world.

Frames was one of the first galleries in the world to sell their art online. Hugh was even featured on Grampian TV – in 1997 – and quoted as saying at the time, "Hugh is convinced the internet is here to stay." He may possibly have had a point!

He says the art world has changed in myriad ways. Where as at one time the gallerist would go seeking the artist, now they are inundated with artists who approach them daily – looking for places to hang their works.

Hugh has built up reputation as being a superb gallery director and has shown many artists from Elizabeth Blackadder to John Brown, never having to have a formal contract with their artists, always just going on good faith.

He is never put off by the age of an artist, nor whether they have been formally trained or went to art school. One of their most successful artists to be shown

is James Fraser, who worked in the civil service for many years before changing careers to become an artist, enrolling at Edinburgh College of Art in 1999 as a mature student.

"My advice to anyone starting out is to look at the kind of galleries you would like to show at, do your research and see what these galleries are showing. Get in touch with them – e-mailing is always a good way. When people turn up and physically show us their actual paintings, it's often quite hard to tell them, especially if you don't want to show them," he said with candour.



With wife Julie and, below daughter Lindsay



Over the years Hugh has garnered a great many friends and contemporaries. One of the highlights has been participating in the Perth Festival of the Arts exhibition, ArTay show, where thousands of people come together to see paintings, everyone from young kids to grandmothers can look.

The past year with the pandemic has been crushing for many businesses but for Hugh at Frames it was a time where they sold dramatically more art online than ever before.

For a chance to see the gallery, visit Frames in Perth at 10 Victoria Street, Perth, PH2 8LW. Or go online to www.framesgallery.co.uk

Interview:

TESSA WILLIAMS



Dear Sir...

Sir, – May I share my experience of the Borders Book Festival just past, held at Abbots-ford House?

I was keen to attend to hear guest speaker Alexander McCall Smith. I was told when I phoned, yes, there was still a ticket available. However, this is where the trouble started and to not put too fine a point on it, I felt humiliated by the staff of both Abbotsford and the book festival.

The problem was, as I am registered disabled (still recovering from Cardiac issues), I needed a wheelchair. As well as a wheelchair, which was eventually found, I needed someone to push me the 100 yards down to the event from the car park. But that, I was told, was not possible at all.

I was told first it was because of insurance, then no one was trained to push a wheelchair or as, Alistair Moffat the Director told me finally, it just was not on. "Why don't you ask a friend to oblige?" he said.

I had wanted to attend to buy some of Sandy's latest books as signed Christmas presents. As a 71 year old living 5 miles from Abbotsford, this left me in tears.

I spoke afterwards to my MSP, Rachel Hamilton, who was shocked at the treatment I had received.

In my previous working life I was employed to carry out disability access visits for bodies such as The National Library in Edinburgh and was always treated with courtesy and with proper measures in place

Yours,
HUGH MUNRO
Scottish Borders



SANDBANK STUDIO
Wide range of original paintings by
Duncan Currie
Old Pier Rd
Broadford Isle of Skye
Tel: 01471 822064
duncan@sandbank.plus.com
www.duncancurrie.co.uk

FRAMES GALLERY
Winter Exhibition
13th November— 31st January
with painting, printmaking, ceramics and jewellery
by some of our favourite artists and makers.

10 Victoria Street Perth PH2 8LW | framesgallery.co.uk
01738 631085 | info@framesgallery.co.uk

Heavy Skies by Catrina Prigmore

WE ARE MOVING!!
JUST AROUND THE CORNER

NEW LOCATION
UNIT F
HAWKHILL COURT
DUNDEE DD1-4JG
0330 223 0922

iARTSUPPLIES SHOP ONLINE

What Goes Around, Comes Around – On Spirals, Circles and Labyrinths

HERE IN Northumberland the rain pours down. In Glasgow, it's Day1 of COP26. Not far away, Lady Louisa Waterford rests at peace in the churchyard in Ford village. Down in Plymouth the current exhibition at The Box Gallery, is 'Songlines, Tracking the Seven Sisters', inspired by dreamtime stories, ancient Australian creation sagas.

A century ago, my maternal grandmother was championing the rights, education and well-being of aboriginal women, too often victims of abuse by white settlers, men bent on exploiting the land and its riches – animal, mineral, vegetable and human.

The connections? What goes around, comes around. Not only spirals, concentric circles, labyrinthine patterns, and rock art, but issues like justice, exploitation, sustainable living, and perhaps even the survival of "homo sapiens".

The Seven Sisters are being chased across the land by a male predator, a 'shape-shifter' like his Nordic counterpart Loki, often symbolised by a coiled springlike spiral of potential energy, a serpent, as in the Garden of Eden in the Christian creation saga.

As so often, a singular male 'hero' is after a collective of females – not always such a good idea! The sisters' encounters with their chaser are reflected and embodied in both the landscape, and in the constellations in the night sky.

Survival in the outback depends on sharing, working together, remembering ancient wisdom, embodied in the land, and passing it on to future generations. Concentric rings are a recurring motif in the artwork.

This culture recognises and respects the continuity and interconnection of the creative process, concepts which the modern world has largely denied, or lost.

Central to the aboriginal life journey is positive, creative interaction between male and female, living, working and socialising together. That requires peace and understanding, shelter and food. Louisa, Marchioness of Waterford, who inherited the Ford and Etal Estate in 1859, clearly understood that, devoting much of her time to improving the lives of her tenants and their children, be it by building new houses,

establishing one of the country's first schools, and encouraging sobriety, so no public houses on her estate!

She would have agreed with my grandmother, that "the best home is run by man's and woman's mind co-operating". Given that our planet is our home, probably a good plan to heed the words of Margot Neale, the curator of the



Labyrinth with Cross on Louisa Waterford's Tombstone by G F Watts

Seven Sisters Exhibition, "Here we are, 250 years after the British set out to colonise and civilise us, taking our culture to the British – to teach them how to survive in this fragmenting world. Our civilisation had the resilience and knowledge, held in the songlines, to survive over millennia".

An accomplished artist, tutored by Ruskin, Louisa Waterford is best known today for the impressive series of watercolour panels of biblical scenes in Lady Waterford Hall. Less well known is her tombstone, designed by G F Watts, 'England's Michelangelo', considered one of the greatest of Victorian artists in his lifetime.

At the heart of the Christian cross, is a labyrinth. Labyrinths, spirals and concentric

circles occur in ancient cultures across the world, symbols open to all manner of interpretation – pathways to the inner, unseen world of the ancestors, or the feminine, or the patterns of the two hemispheres of the human brain, or intestinal spiralings.

Whatever their purpose, they continue to fascinate and manifest. In Edinburgh there's a labyrinth in George Square Gardens, based on a similar one in Chartres Cathedral, and a spiral landform by Charles Jencks outside the Scottish National Gallery of Modern Art. To cap it all, the new St James's Centre tops itself with a golden swirl! In 2013 artist Mark Wallinger created 270 labyrinthine artworks for London Underground, reflecting on the mythic quality of commuters' daily descents and journeyings in that underworld.

Back here in Northumberland, not far from Ford, are some fine examples of cup and ring marks, prehistoric designs carved into rock some five millennia ago, and still shrouded in mystery and conjecture.

Astrophysicist Peter Tullet makes a highly original and intriguing case for these patterns to be tools for mapping the night skies, mirroring constellations, estimating relative brightness and nebulousity, and helping to predict lunar and planetary alignments.

Whatever their meaning and purpose, so long as we don't know what we don't know, these circular motifs continue to fascinate and inspire the imagination.

One thing seems certain, both these enigmatic rock carvings, and aboriginal rock art, are likely to survive a lot longer than the ephemeral, immaterial and virtual electronic records of our civilisation. It's a sobering thought.

NICK JONES

Petroglyphs and the Stars in Northumberland by PF Tullet. Cambridge Scholars Publishing. www.theboxplymouth.com/events/exhibitions/songlines



The High St Merchants

Georgia Rose Murray is an internationally exhibiting Artist and Lecturer. Georgia will be exhibiting her work at the High St Merchants from November 10th 2021 - 31st January 2022

Over the last six years she has been travelling north, specifically to witness each polar season. After first experiencing Polar Night (2015), Georgia knew she now needed to spend time understanding Arctic landscapes.

A fascination with natural light drives Georgia's on-going ambition to gain a deep understanding of our precious polar landscapes.

www.georgiarosemurray.com



'Arctic Cracking', Oil, pigment, gloss on board

Café - Gallery - Bar
74 High St,
Grantown on Spey
PH26 3EL

Tel: 01479 872 246

Beautiful selection of Fine Art, crafts & Photography, home baking, coffee, lunch.

Warm welcome awaits you.

Closed Mondays & Tuesdays

KELSO POTTERY

100 metres behind the Kelso Abbey in The Knowes Car Park.

Porridge and Soup Bowls, Piggy Banks and Goblets, Ovenproof Gratin Dishes, also Pit Fired Pieces.

Open Tues - Sat 10 to 1 - 2 to 5

Telephone: (01573) 224027



the ceilidh place



Image by Sara Garnett

Wing. Water. West, Sara Garnett. Kim Richards
5 November 2021 - 31 March 2022

ULLAPOOL
www.theceilidhplace.com

Guide

interesting gifts

Beaulieu

KILMORACK GALLERY. The Old Kilmorack Church, IV4 7AL, 01463 783 230, www.kilmorack-gallery.co.uk, art@kilmorack-gallery.co.uk

Until December 1

Beth Robertson Fiddes, Jane MacNeill, Paul Bloomer, Lotte Glob, Allison Weightman, Adrian Wiszniewski, Liz Knox, Peter White, Sam Cartman, Allan MacDonald, Patricia Cain, Carina Prigmore and Paul Barnes.

Berkshire

STANLEY SPENCER GALLERY, High Street, Cookham, SL6 9SJ, 01628 471 885
Until March 27 2022
Stanley Spencer. Mind and Mortality. Portraits

Berwick-upon-Tweed

BERWICK GYMNASIUM ART GALLERY, Berwick Barracks, The Parade, TD15 1DG, 01289 304 535

Until February 6 2022

Quilts: Resurgence. Quilt making

DOCKSIDE GALLERY, 84 Main Street, Tweedmouth, TD15 2AA, 01289 302437, www.docksidegallery.co.uk

An ever-changing exhibition of original paintings, prints, cards and gifts including ceramics and jewellery.

Until December 22

Mixed Winter Exhibition.

BERWICK MUSEUM & ART GALLERY, The Clock Block, Berwick Barracks, The Parade, TD15 1DG, 01289 309 538

Ongoing

Berwick Burrell Collection. A collection of fine art and delightful Oriental porcelain

THE GRANARY GALLERY, 2nd Floor, Berwick YHA, Dewar's Lane, Berwick upon Tweed, TD15 1HH, 01289 303 232

Until February 6 2022

Quilts: Resurgence. Explores the revival of quilt making.

NUMBER FOUR GALLERY, Northfield Farm, St Abbs, Berwickshire, TD14 5QF, 01890 771 111

Contemporary work from artists and designer/makers from both sides of the Border

PAXTON HOUSE, Paxton house, Paxton, TD15 1SZ

MARTA UTSLER, 01289 763748, www.martautsler.com

BERWICK ART GROUP, 23 Bell Tower Park, TD15 1ND

Birmingham

IKON GALLERY, 1 Oozells Square, Brindleyplace, B1 2HS, 0121 248 0708

BIRMINGHAM MUSEUM & ART GALLERY, Chamberlain Square, B3 3DH, 0121 348 8000
Until December 16 (Thursdays only)

Guided Tour of Sarehole Mill. Enjoy the sights and sounds of a traditional 18th Century Water Mill

Borders

THE SCOTT GALLERY, Hawick Museum, Wilton Lodge Park, Hawick, TD9 7JL, 01750 20096

THE CHRISTOPHER BOYD GALLERY, Old Gala House, Scott Crescent, Galashiels, TD1 3JS

FLAT CAT GALLERY, 2 Market Place, Lauder, TD2 6SR, 01578 722 808, www.flatcatgallery.co.uk, flatcatgallery@btconnect.com
Until January 31 2022

Paint, pastel and Print

THE ROADSTEAD GALLERY, St Elias Place, Eyemouth, TD14 5HP, 018907 52067

REAL WOOD STUDIOS, Monteviot Nurseries, Nr Ancrum, Jedburgh, TD8 6TU, 01835 830 767

Contemporary Scottish furniture Caf  and walks

BUY DESIGN GALLERY, 1 Harestanes Craft Workshops, Harestanes by Ancrum, Jedburgh, TD8 6UQ, 01835 830 718

Showspace for quality crafts made in wood, metal, glass, ceramic and textile

TWEEDSIDE GALLERY, Tweedside Road, Newtown St Boswells, Roxburghshire, TD6 0PG, 01835 823473

Picture Framing Plus beautiful crafts such as aromatic, ceramics, glass and much more

EDGE TEXTILE ARTISTS SCOTLAND, Towerhouse, Hawick, www.edge-textileartists-scotland.com

Promoting excellence in textiles by artists based in Scotland

Bristol

ARNOLFINI, Bush House, 16 Narrow Quay, BS1 4QA, 0117 917 2300

BRISTOL DRAWING SCHOOL, Unit 5.18, Paintworks, Arncliffe, BS4 3EH
Until November 27

The RWA Collection - Our Heritage, Our Future (Off-site).

Until January 6 2022 (RWA Pop-up Exhibition Off-site)
Varekai (Wherever). Comprises eight paintings that all have a distinct sense of the outdoors about them

Caithness

NORTH LANDS CREATIVE GLASS, Quatre Bras, Lybster, KW3 6BN, 01593 721 229, www.northlandscartive.co.uk, info@northlandscartive.co.uk

Closed to the public in response to the Coronavirus Pandemic
Until December 31
Glass, Meet the Future 2021. Digital Film Festival

LYTH ARTS CENTRE, Lyth, Wick, KW1 4UD, 01955 641 270, www.lytharts.org.uk

Due to Covid-19 all events and activities are postponed till further notice. Check website for further details

NORTHSHORE POTTERY, Mill of Forse, Lathron, KW5 6DG, 01593 741 777

Studio pottery and ceramic sculpture by Jenny Mackenzie Ross

THURSO ART GALLERY, Davidson's Lane, Thurso, KW14 7AS, 01847 896 357

Cambridge

KETTLE'S YARD, Castle Street, CB3 0AQ, 01223 748100

Until June 30 2022

Sutapa Biswas: Lumen. Solo show - painting, drawing, sculpture, photography and video

Castle Douglas

CLIENCE STUDIO, 212 King Street, DG7 1DS, 01556 504318, www.cliencestudio.co.uk

Gallery & studio of Angela Lawrence: changing displays

DESIGNS GALLERY & CAFE, 179 King Street, DG7 1DZ, 01556 504 552, www.designsgallery.co.uk, admin@designsgallery.co.uk

A selection of books, prints and cards

THE MCGILL-DUNCAN GALLERY, 231 King Street, DG7 1DT, 01556 502 468

ARTS OF ALBA, 39/40 Threave Terrace, DG7 1HG, 01556 504 020

Featuring the work of Freida Dyson, Sam Mullen and Sheila Mullen

JANINAS ART, Meadowview, Springholm, DG7 3LP, 01556 650329

Still lifes, landscapes, portraits, figures, abstracts, experimental work in mixed media

THE GALLERY AT LAURISTON, Woodbank House, Lauriston, DG7 2PW, 01644 450 235

Contemporary and traditional Fine Art and Landscape images of Galloway

DALBEATTIE VISITOR INFORMATION AND CRAFT CENTRE, 24 High Street, Dalbeattie, DG5 4AA, 01556 612 752

NORTH GLEN GALLERY, North Glen, Palmackie, Castle Douglas, DG7 1PN, 01556 600 200

Exhibitions open studio, glass-blowing, oil lamps, chandeliers, wine goblets. Call for details

Cornwall

ROYAL CORNWALL MUSEUM, River Street, Truro, TR1 2SJ, 01872 272 205

Until December 24

Tony Foster. Fragile Planet. Watercolour journeys into wild places

LEMON STREET GALLERY (LSG), 13 Lemon Street, Truro, TR1 2LS, 01872 275 757

County Durham

BOWES MUSEUM, Newgate, Barnard Castle, DL12 8NP, 01833 690 606

Until January 9 2022

North Country Quilts: Paul Scott. New American Scenery. Showcases the latest ceramic works

THE ORIENTAL MUSEUM, Elvet Hill, DH1 3TH, 0191 334 5694

Until December 18
Sarah Danays. Uterine Dreams: Sculptor, Heal Thyself. Installation

Crieff

artwork@famedram.com

The

AITON FINE ARTS, 63 King Street, PH7 3HB, 01764 655 423
Contemporary Scottish paintings and prints. Picture restorers and framers
THE STRATHEARN GALLERY, 32 West High Street, PH7 4DL, 01764 656 100, www.strathearn-gallery.com, info@strathearn-gallery.com
Until November 21
Ron Lawson. Surf to Summit. Celebrating a return to the islands - over 60 paintings
November 26 - January 30 2022
2021 Winter Mixed Exhibition. Glass, sculpture, metalwork and more

Cumbria

ART IN THE PEN, Borderway Auction Mart, Roschill Industrial Estate, Montgomery Way, Carlisle, CA1 2RS, www.artintheopen.org.uk
Contemporary art fair
ABBOT HALL ART GALLERY, Kendal, LA9 5AL, 01539 722464
Exhibition talks, holiday workshops, gallery book shop, coffee shop
KENDAL MUSEUM, Station Road, Kendal, LA9 6BT, 01539 815597
BLACKWELL, Bowness-on-Windermere, LA23 3JT, 01539 446 139
BREWERY ARTS CENTRE, Highgate, Kendal, LA9 4HE, 01539 725 133
Until November 21
The Alpinist. Marc-Andre Leclerc climbs alone, far from the limelight
EDEN ARTS, 1 Sandgate, Penrith, CA11 7TP, 01768 899 444
PENNINE POTTERY, Cargill Head House, Alston, CA9 3NG, 01434 382 157
Pottery & kiln work of ceramicist Peter Lascelles - please telephone first
RED BARN GALLERY, Melkethorpe, Penrith, CA10 2DR, 01931 221 767
MUSEUM OF LAKE LAND LIFE & INDUSTRY, Abbot Hall, Kirkland, Kendal, LA9 5AL, 01539 722 464
Until February 27 2022
Class, Covid & Cumbria. Exploring the stories of Cumbria's during the pandemic
WILLOWPOOL DESIGNS, 9 Weston Houses, Endmoor, Kendal, LA8 0HA, 01539 567 056
Willow work by Simone Siegan & Steve Fuller
DOVE COTTAGE & THE WORDSWORTH MUSEUM, Dove Cottage, Grasmere, LA22 9SH, 015394 35544
FARFIELD MILL, Garsdale Road, Sedburgh, LA10 5LW, 01539 621 958
Until December 23
Fell Ponies Heritage Exhibition
November 10 - January 2 2022
Changing Minds - World Wide Whispers Quilt Collective. 40 quilters from 40 countries
TULLIE HOUSE MUSEUM AND ART GALLERY, Castle Street, Carlisle, CA3 8TP, 01228 618718
Until December 31 2023
Gabriel Dante Rossetti, Elizabeth Siddal, Edward Burne-Jones, Phoebe Anna Traquair and Arthur Hughes. The Pre-Raphaelites: Black Memories Matter
THE GALLERY AT RHEGED, Rheged Centre, Redhills, Penrith, CA11 0DQ, 01768 868 000
UPFRONT GALLERY AND COFFEE SHOP, Nr Hutton-in-the-Forest, Unthank, Penrith, CA11 9TG, 01768 484 538
Until November 14
Andrew & Gwen Adair. Colour & Surface. Include ceramics and 2D work
BRANTWOOD, The Brantwood Trust, Coniston, LA21 8AD, 01539 441 396
Until November 7
Kate Bentley. Ruskin's Reverie. Paintings
November 13 - February 27 2022
Mike Healey. The Gardens of Persephone. Works

Devon
INSPIRED PAINTING HOLIDAYS, Weston House, 6 Luke Street, Bampton, EX16 9NF, 01398 332094, www.inspired-paintingholidays.co.uk
Landscapes, gardens, coast painting courses with Catherine Stott
PLYMOUTH COLLEGE OF ART, Tavistock Place, Plymouth, PL4 8AT, 01752 203 434
Dumfriesshire
GRACEFIELD ARTS CENTRE, 28 Edinburgh Road, DG1 1JQ, 01387 262 084, www.dgculture.co.uk/venue/gracefield-arts-

centre/, arts@dumgal.gov.uk
Until January 8, 2022
South West Scotland Printmakers
SPRING FLING OPEN STUDIOS, Gracefield Arts Centre, 28 Edinburgh Rd, DG1 1JQ
ROBERT BURNS CENTRE, Mill Road, Dumfries, DG2 7BE, 01387 264808
Check website for more details
DUMFRIES MUSEUM AND CAMERA OBSCURA, The Observatory, Rotchell Rd, Dumfries, DG2 7SW, 01387 253 374
December 1 - January 1 2022
Fabrics under the lens - forensic textile conservation.

Dundee

DUNCAN OF JORDANSTONE COLLEGE OF ART & DESIGN GALLERIES, University of Dundee, 13 Perth Road, DD1 4HT, 01382 385 330
LAMB GALLERY, University of Dundee, Tower Building, Nethergate, DD1 4HN, 01382 385330
Until January 22 2022
Drawn. Drawings from our extensive collections
HANNAH MACLURE CENTRE, University of Abertay, Top Floor, Abertay Student Centre, 1 - 3 Bell Street, DD1 1HP, 01382 308 777
GALLERY Q, 160 Nethergate, DD1 4DU, 01382 220 600, www.galleryq.co.uk, art@galleryq.co.uk
November 20 - January 22 2022
Winter exhibition.
January 29 2022 - February 19 2022
Graham Wands. Mixed exhibition. Featuring
February 26 2022 - March 19 2022
Robert McGilvray. Mixed exhibition. Featuring
March 26 2022 - April 23 2022
Jolomo - John Lowrie Morrison.
THE MCMANUS: DUNDEE'S ART GALLERY & MUSEUM, Albert Square, Meadowside, DD1 1DA, 01382 307 200
Until March 31 2022
A Love Letter to Dundee: Joseph McKenzie Photographs 1964-1987.
DUNDEE CONTEMPORARY ARTS (DCA), 152 Nethergate, DD1 4DY, 01382 909 900
Until November 21
Mary McIntyre. Places We Think We Know.
Chikako Yamashiro. Chinbin Western. Performance, filmmaking and photography
COOPER GALLERY (EXHIBITIONS), Duncan of Jordanstone College of Art & Design (DJ-CAD), University of Dundee, 13 Perth Road, DD1 4HT, 01382 385 330, www.dundee.ac.uk/cooper-gallery/exhibitions/
Until December 31 2023
Ruth Ewan. The Ignorant Art School: Five Sit-ins towards Creative Emancipation.
THE KRYSZTYNA GALLERY, 15A Nelson Street, DD1 2PN, 01382 322 522, krysztyntart@gmail.com
Drawings, Paintings and Prints
BROUGHTY CASTLE MUSEUM, Castle Approach, Broughty Ferry, DD5 2TF, 01382 436916
Houses displays on the life and times of Broughty Ferry, its people, the environment and the wildlife that live close by
MCMANUS COLLECTIONS UNIT, Barrack Street, Tayside, DD1 1PG, 01382 307200
IARTSUPPLIES, Unit F, Hawkhill Court, DD1 4JG, 0330 223 0922, www.iartsupplies.co.uk
Online Art Shop and Art Supplies
All year round
Online Art Supplies. High quality student ranges and artist ranges of Oil, Acrylic, Gouache, Watercolour, Watermixable Oil Paints, Lino and other printmaking equipment
LIFESPACE SCIENCE ART RESEARCH GALLERY, College of Life Sciences, University of Dundee, DD1 5EH, 01382 381023
MILLS OBSERVATORY, Glamis Road, Balcay Park, DD2 2UB, 01382 435 967
Britain's first purpose-built public observatory

East Lothian
GREENS & BLUES, 59 High Street, North Berwick, EH39 4HG, 01620 890 666, www.greensandblues.co.uk, info@greensandblues.co.uk
POLDRATE ARTS AND CRAFTS CENTRE, The Elizabeth Hamilton Buildings, Poldrate, Haddington, EH41 4DA, www.thepacc.org.uk, info@thepacc.org.uk
FIDRA FINE ART, 7-8 Stanley Road, Gullane, EH31 2AD, 01620 895057, www.fidrafineart.co.uk, info@fidrafineart.co.uk
200 years of Traditional and

Signs of new life at the end of the line

When the Irish ferries left Stranraer the future for the town looked bleak, but Mary Gladstone finds encouragement amongst the decay

HOW CAN STRANRAER slough off public perception that it's a has-been, a disused ferry port? For 150 years, it was the main Scottish harbour for the Irish ferries. But ten years ago, Stena Line moved its terminal up the coast to Cairn Ryan. The exodus was expected, but it resulted in decline. As one resident put it, "With no boats coming in, it gives a feeling of isolation, of being at the end of the line."

When entering Stranraer from the south, it's difficult not to feel that you're at the end of the line. Passing the aesthetically unimpressive Ryan Leisure Centre, John Betjeman's lines spring to mind. "Come, friendly bombs and fall on Slough/It isn't fit for humans now!"

With the late poet laureate and champion of London's Victorian St. Pancras Station renovation in mind, I parody him: "Come, handy wrecking-ball and raze Stranraer/Nothing can save it now from neglect and the motor car."

It's true. The town has, I'm afraid, some of the most unattractive buildings in Scotland, several built in the 1960s and 1970s, an era when civic vandalism dominated, not only in the southwest but in Glasgow and Edinburgh.

It also has winding streets of attractive, but down-at-heel 18th and early 19th century town houses and Betjeman would applaud Bellevilla Road's Ann House, crammed between Morrison's supermarket and a filling station. Described in 1875 as 'an elegant villa', the 2 storey, Georgian house, was up for demolition in 2012. With its roof restored, window panes replaced and gleaming white walls, it shows what can be done to bring back a bit of elegance to the town.

Sadly, other buildings, worthy of renovation, have been overlooked. Stranraer Museum, the beautiful Old Town Hall built in 1776, is surrounded by an eye-sore: the abandoned George Hotel, an ongoing nightmare situated in the town centre and left to rot. On the other side is the Millennium Centre, which underwent recently a 'multi-million

pound' reconstruction to provide concerts, dances, Bingo and other local entertainment. The money may have been well spent but it failed to add anything of architectural merit.

These days, redundant factories are often turned into accommodation and offices, power stations into art galleries, flower markets into cafe s and walkways, docks and ferry ports into boating and waterfront areas. Before Stena Line (and P & O before them) moved to the head of Loch Ryan, Dumfries & Galloway Council planned to turn the old harbour into a marine leisure centre.

They chose Edinburgh architects Smith, Scott & Mullen to draw a master plan for the waterfront. An award-winning partnership, this firm has refurbished an Edwardian theatre, rescued a 1930s roadhouse and planned a spa hotel overlooking Ben Nevis. The aim was to connect the historic town centre to the waterfront, get rid of some car parks and create a pleasant environment for paddling, swimming, rowing, boating and yachting. Visitors could stroll along the redeveloped west pier and on a clear day see Ailsa Craig and Arran.

Funded by D & G Council and the Scottish Government's Town Centre Regeneration Fund, the first phase was the site around the 15th century castle of St. John in Castle Square. Inspired by its medieval history, they created a vibrant paving design in local whinstone and granite, planted hornbeam and introduced poetry and sculpture.

By narrowing the street, they integrated pedestrians and traffic, which helped create a wide public space. It cost £ 1.29 million and won the Scottish Design Award for Public Realm/Landscaping in 2012 and the Saltire Award for Arts & Crafts in Architecture.

The next phase was to renovate and convert the old harbour-master's office and its clock tower (shown above). Built in 1938, it is the only example



of Art Deco in Stranraer. The conversion has a modern brick extension connected by a glass link and the external landscaping frames an industrial weighbridge, which has remained unaltered since its load-carrying days. With its clean lines, avoiding an earlier plan for curved walls for the extension, this renovation is home to The Gateway to Galloway Visitor & Community Hub. Opened this summer, it is run by the Stran-raer Development Trust, comprising local people concerned about the deterioration of the town.

On entering, on a dry day, through the door in the glass link, the effect of sunlight reflected on water is uplifting. Gateway to Galloway is not only a visitor centre, it promotes art, craft and local businesses, acts as a box office for events like the three-day Oyster Festival, cancelled this year and last but hoping to be held next year in September, and is particularly active for the young, giving them the chance to learn and develop job skills.

A fraction of their programme involves gardening, cleaning up public spaces, geology and stone-carving. £ 26.5 million has been ear-marked to put Stranraer back on the map, to transform a harbour wasteland into a Galloway sea-side Shangri-la.

Should we hold fire on the wrecking-ball? I'll consult the ghost of John Betjeman.





THE ROYAL SCOTTISH
SOCIETY OF PAINTERS
IN WATERCOLOUR

Call for Entries
141st Open Annual Exhibition
Revised hand-in dates
28 & 29 Nov 2021
See rsw.org.uk or OESS for details

141st Open Annual Exhibition
11 – 27th December 2021
Royal Scottish Academy,
The Mound, Edinburgh
www.rsw.org.uk
Registered charity no: SC007247



Clience Studio
Angela Lawrence
Featuring Galloway - Paintings & Prints
Art gifts, Tokens & Commissions.
OPEN ALL YEAR
Mon - Sat 10.30-5pm (Tues.4pm)
212 King St, Castle Douglas, DG7 1DS
01556504318
angela@cliencestudio.co.uk
For Online orders: www.cliencestudio.co.uk

WINTER EXHIBITION ON NOW



Gallery favourites including Amanda Phillips, James Somerville Lindsay & Linda Park. New works from Joseph Maxwell Stuart, Louise McNally, Fiona Matheson, Paul Janssens and Jonathan Mitchell
Gift vouchers and framing service available.



59 High Street, North Berwick 01620 890666
info@greensandblues.co.uk www.greensandblues.co.uk

Historic achievement:

When he found his restoration path blocked by an unhelpful Historic Scotland, Phill Plevy went right back to basics...

BACK IN the early 1990s I spent five years looking for a ruined Scottish fortified tower house to restore and make my home. Initially I looked in the Aberdeenshire

area, where there a quite a number of ruins of various descriptions and state of disrepair. Later I expanded my search to cover a much larger area of Scotland as I was having

issues with Historic Scotland and the Ancient and Historical Monuments of Scotland. This and, in addition, some owners of these ruins.

However, it was the issues with HS that finally made me give up on my search for a ruined tower house and instead built my own from scratch. This task took me 25 years to complete, but it was worth it, and I have lived in my tower house now for three years.

So, what was it that prevented me purchasing a ruin to restore? Mainly the rules and conditions that were imposed upon me by Historic Scotland which had to be met without any allowance for compromise. Further, no grants to assist with the restoration were available, based on the statement by HS that: "The castle/tower has no historical significance; therefore, it is not worth restoring."

Strange that, when HS was 'responsible for safeguarding Scotland's built heritage.'

I will not name the tower houses or castles I contacted HS about with regard to restoration, but will list the reasons they gave and also the conditions they would impose upon me should I wish to go ahead with a restoration project.

I have already mentioned the fact that unless the ruin was of significant historical value no grant would be available to assist with the restoration project.

Prior to any restoration works commencing the 'castle' site had to be fully investigated by a team of archaeologists who would report on all findings to the HS, not to me, who was having to pay for this investigation.

Having purchased a ruin I was informed by one HS inspector that I would have to differentiate using a course of 'red' bricks what was original and where the new modern build started. Can you imagine seeing a line of red bricks running all around your restored castle...??

When I suggested that I could hide this eyesore by harling the castle, I was informed that harling

could only be used if the castle was from a period where harling was used, but the line differentiating new from old would still have to be visible, even if it meant painting a red line on the harling...!!

On a number of ruins I did, or had my architect, outline drawings of what the castle would look like once completed, these were based on old photos, old engravings of the castle and assumptions made from what actually remained of the castle, L-Plan, Z-Plan, etc.

On each occasion HS disagreed with my outline plans and stated that they would not approve the restoration project unless I changed my plans to what they believed the castle would have looked like. Again, this would all be to my cost.

The choice of building material would be specified by HS and not me: modern brickwork (concrete blocks) could not be used, I would have to employ a stonemason to cut stone for the restoration, precast stone could not be used either.

The list just goes on, but the sad thing in all this is that a couple of the ruins I had looked at have now deteriorated to such an extent that restoration would now not be possible, or so expensive as to make it not worthwhile. In one particular case, a Z-Plan castle, one of the corner round towers has completely collapsed, taking part of the central tower block with it.

As I mentioned earlier, I built a reproduction

16th century Scottish fortified tower house called Craigietocher Tower in a little glen just south of Turriff.

Am I happy with it?

You bet I am and building it to 20th and 21st century building regulations was a dawdle compared with trying to work with the HS.

This build was helped considerably



by the Building Inspector at Turriff, who made suggestions on renaming rooms so that I could install gun loops rather than conventional windows and adding temporary fire walls to meet the twentieth and twenty first century Building Regulations.

This also including having a ground floor door and secondary fire escape stairs, in addition to the spiral stair in the thickness of the six foot walls.

Foot Note:

Historic Scotland was an executive agency of the Scottish Office and later the Scottish Government from 1991 to 2015, responsible for safeguarding Scotland's built heritage, and promoting its understanding and enjoyment.

Under the terms of a Bill of the Scottish Parliament published on March 3, 2014, Historic Scotland was dissolved, and its functions were transferred to Historic Environment Scotland (HES) on October 1, 2015. HES also took over the functions of the Royal Commission on the Ancient and Historical Monuments of Scotland.



Guide

Contemporary Scottish Art

November 27 - January 20 2022

: George Birrell, Georgina Bown, Davy Brown, Dominique Cameron, Allan Connell, Michael Dawson, Fee Dickson, Matthew Draper, Michael Durning, Ronnie Fulton, Andy Heald, Alex Knubley, Simon Laurie, Sarah Lawson, Alejandro Lopez, Gerard Lepiniere, Mixed Winter Exhibition. Featured artists also include Stephen Mangan, John McClenaghan, Ian Neill, Pascale Rentsch, Paul Reid, Allan J Robertson, Arran Ross, Jayne Stokes, Damian Tremlett, Astrid Trägg, Jane Walker, Graeme Wilcox, Christopher Wood & Darren Woodhead

SEASHORE GALLERY, Marshall Street, Cockenzie, EH32 0HT, 0793 592 8288

Paintings, jewellery, wood, ceramics, glass, prints, cards

WESTGATE GALLERY, 39-41 Westgate, North Berwick, EH39 4AG, 01620 894 976

Paintings, limited edition prints, sculptures, ceramics & glass.

Licensed Gallery caf  

BRAID IMAGE, 60 Rhodes Park, North Berwick, EH39 5NA, 01620 890 780

Large Panoramic Art Photographs, Printed on Canvas. View on-line gallery or visitors by appointment

ST ANDREW BLACKADDER CHURCH HALL, St Andrew Street, North Berwick, EH39 4NU, 01620 894 196, www.standrewblackadder.org.uk, stephen-govenlock123@btinternet.com

GALLERY 27, Dunbar Business Center, 8 Spott Rd, Dunbar, EH42 1RS, 07942 676804

BASS ROCK POTTERY, TANTALLON ARTS & CRAFTS STUDIOS, Halfland Barns Schoolhouse, North Berwick, EH39 5PW, 0131 467 8300

PAINTBOX ART CLASSES, Cockenzie House & Gardens, 22 Edinburgh Rd, Cockenzie, EH32 0HY, 07852 951 592, www.paintboxartclasses.com, paintboxart@outlook.com

November 13 & 14 (Also on February 25-27 2022)

A Sense of Perspective. Week-end workshop

November 19 - 21

Jemma Derbyshire. Intensive 3 Day Mentoring.

NATIONAL MUSEUM OF FLIGHT, East Fortune Airfield, North Berwick, EH39 5LE, 0300 123 6789

Until January 31 2025

Red Arrows Hawk T.1A. Display

THE SCOTTISH ORNITHOLOGISTS' CLUB (SOC), Waterston House, Aberlady, EH32 0PY

Edinburgh

THE SCOTTISH NATIONAL GALLERY, The Mound, Princes Street, EH2 2EL, 0131 624 6200

Until January 23

Thomas Joshua Cooper. The World's Edge. Photographs

SCOTTISH NATIONAL GALLERY OF MODERN ART, 75 Belford Road, EH4 3DR, 0131 624 6200

Until January 9 2022

Alison Watt | A Portrait Without Likeness.

Until February 20 2022

Ray Harryhausen: Titan of Cinema.

CITY ART CENTRE, 1-3 Market Street, EH1 1DE, 0131 529 3993

Until March 13 2022

Tapestry: Changing Concepts. Featuring work by 19 contemporary artists

November 6 - March 20 2022

Reflections: The light and life of John Henry Lorimer (1856-1936)

Until May 28 2022

Kate Downie, Rachel Maclean, Alison Watt, David Eustace, Peter Howson, Anthony Hatwell and Ian Hamilton Finlay. Incoming: New Acquisition.

THE ROYAL SCOTTISH ACADEMY BUILDING, Upper Galleries, EH2 2EL, 0131 225 6671, www.royalscottishacademy.org

Until January 15 2022

The Ages of Wonder: The Art of Etching on Tour.

THE SCOTTISH GALLERY, 16 Dundas Street, EH3 6HZ, 0131 558 1200, www.scottish-gallery.co.uk, mail@scottish-gallery.co.uk

Until November 21

Elizabeth Blackadder (1931-2021). Favourite Flowers.

Until November 27

Past & Present Print Masters. Printmaking

Akiko Hirai & Jason Collingwood.

Barry McGlashan. Between the Dream and Waking. Work

Marianne Anderson.

December 2 - 23

Adam Bruce Thomson, Stephanie Dees, Amy Dennis, Kate Downie, Matthew Draper, Michael McVeigh, Arran Semple and Andrew Siddall. Barnaby Ash and Dru Plumb (Ash & Plumb). Hannah Mooney. Into the Landscape. Works

THE FRUITMARKET GALLERY, 45 Market Street, EH1 1DF, 0131 225 2383

Until December 25

Night Walk for Edinburgh.

NATIONAL MUSEUM OF SCOTLAND, Chambers Street, EH1 1HF, 0131 225 7534

Until January 9 2022

Inspiring Walter Scott.

Until April 17 2022

The Typewriter Revolution.

NATIONAL LIBRARY OF SCOTLAND, George IV Bridge, EH1 1EW, 0131 625 3700

Until May 28 2022

Petticoats and Pinnacles: Scotland's pioneering mountain women.

SCOTTISH NATIONAL PORTRAIT GALLERY, 1 Queen St, EH2 1JD, 0131 624 6200

Until January 9 2022

Alison Watt. A Portrait Without Likeness. Body of new work - paintings

INVERLEITH HOUSE, Royal Botanic Garden, 20a Inverleith Row, EH3 5LR

CURIOUSER AND CURIOUSER, 93 Broughton Street, EH1 3RZ, 0131 556 1866, www.curiouserandcuriouser.com, hello@curiouserandcuriouser.com

THE QUEEN'S GALLERY, PALACE OF HOLYROODHOUSE, Palace of Holyroodhouse, Abbeyhill, EH8 8DX, 0131 556 5100

TALBOT RICE GALLERY, University of Edinburgh, Old College, South Bridge, EH8 9YL, 0131 650 2211

Until February 19 2022

Angelica Mesiti. In the Round. First exhibition in Scotland

OPEN EYE GALLERY, 34 Abercromby Place, EH3 6QE, 0131 557 1020

Until December 12

Collective Matters.

THE E.D.S. GALLERY (FORMERLY TORRANCE GALLERY), 36 Dundas Street, EH3 6JN, 0131 556 6366, www.edsgallery.com, mail@torrancegallery.co.uk

November 20 - January 8 2022

Winter exhibition. Featuring over 40 regular gallery artists

INGLEBY GALLERY, 33 Barony Street, EH3 6NX, 0131 556 4441

Until December 18

Moyna Flannigan. Matter. Paintings

HENDERSON ARTSHOP, 28a Raeburn Place, Stockbridge, EH4 1HN, 0131 332 7800, www.hendersonartshop.com, info@hendersonartshop.com

Framing prints materials

GALLERY TEN, 5 William Street, West End, EH3 7NG, 07957 855 426

EDINBURGH PRINTMAKERS WORKSHOP GALLERY, 23 Union Street, EH1 3LR, 0131 557 2479

PATRIOTIC GALLERY @ WASPS, 1d Patriothall, off Hamilton Place, Stockbridge, EH3 5AY, 0131 226 7126

THE DUNDAS STREET GALLERY, 6a Dundas Street, EH3 6HZ, 0131 557 4050, www.dundas-street-gallery.co.uk, art@fasedinburgh.com

ROYAL BOTANIC GARDEN EDINBURGH, 20a Inverleith Row, EH3 5LR, 0131 552 7171

Until December 31

Early Warning Signs. Reduce, reuse, recycle your art

EDINBURGH COLLEGE OF ART, Lauriston Place, EH3 9DF, 0131 221 6109

DOVECOT STUDIOS, 10 Infirmary Street, EH1 1LT, 0131 550 3660

Until January 8 2022

Sud   Reiko. Making Nuno: Japanese Textile Innovation.

MORNING SIDE GALLERY, 94 Morningside Road, EH10 4BY, 0131 447 3041.

LEITH SCHOOL OF ART, 25 North Junction Street, EH6 6HW, 0131 554 5761, www.leithschoolofart.co.uk, enquiries@leithschoolofart.co.uk

MUSEUMS COLLECTION CENTRE, 10 Broughton Market, EH3 6NU, 0131 556 9536

MCNAUGHTAN'S BOOKSHOPS AND GALLERY, 3a & 4a Haddington Place, EH7 4AE, 0131 556 5897, www.mcnaughtansbookshop.com, info@mcnaughtans.co.uk

THE VELVET EASEL GALLERY, 298 Portobello High

Braemar Gallery

www.braemargallery.co.uk

FINE ART : PRINTS : CERAMICS
JEWELLERY : ARTISTS MATERIALS

013397 41681

Artisan

Inbetween Exhibition - 16th October to 26th November
Featuring: Moy Mackay & Fiona Haddow

13-15 Bank St, Aberfeldy, PH15 2BB angela@artisanand.co.uk www.artisanand.co.uk 01887 822700

GALLERY HEINZEL

CONTEMPORARY ART

Winter Exhibition

From 13th November

24 Thistle Street, Aberdeen AB10 1XD
T: 01224 625629 E: info@galleryheinzel.com
W: www.galleryheinzel.com

OPEN MONDAY TO SATURDAY FROM 10am
www.facebook.com/galleryheinzel

dandelion designs & images gallery

stein waternish isle of skye

original paintings, artist prints
photographs, cards & crafts

Winter opening times 1-4pm
(December and January weekends only)
01470 592218
www.dandelion-designs.co.uk

The

Street, Portobello, EH15 2AS, 0131 629 1121, velvetaseel.co.uk
COBURG HOUSE ART STUDIO, 15 Coburg Street, EH6 6ET, 0131 553 2266, www.coburghouseartstudios.co.uk, exhibitions@coburghouse.co.uk
November 13 - 21 (Saturdays and Sundays only)
Fiona Moon, Tea Lautal Graham and Sophie Lee. At Last We Meet Again. Showcase
December 4 & 5
Open Studios. All invited
EDINBURGH PALETTE, St Margaret's House, 151 London Road, Midlothian, EH7 6AE, 0131 661 1924, www.edinburghpalette.co.uk, info@edinburghpalette.co.uk
November 6 - 20
Creative Spirit. Shows a range of work
EDINBURGH ART SHOP, 129 Lauriston Place, EH3 9JN, 0131 229 1809, www.edinburghartshop.com, info@EdinburghArtShop.co.uk
SCOTTISH SOCIETY OF ARCHITECT-ARTISTS, RIAS, 15 Rutland Square, EH1 2BE, www.ssaagallery.org.uk
COLLECTIVE GALLERY, City Observatory, 38 Calton Hill, EH7 5AA, 0131 556 1264
Ongoing
Tessa Lynch. Turns. Sculpture and performance
Until November 21
Mina Heydari-Waite. In sleep it made itself present to them. New installation
THE SALTIRE SOCIETY, 9 Fountain Close, 22 High Street, EH1 1TF, 0131 556 1836, www.saltiresociety.org.uk, saltire@saltiresociety.org.uk
Artistic interests include awards for the weans in Scottish song, and for artists in Arts and Crafts in Architecture
STILLS GALLERY, 23 Cockburn Street, EH1 1BP, 0131 622 6200
THE ADAM POTTERY, 76 Henderson Row, EH3 5BJ, 0131 557 3978
Thrown, sculptural and hand-built ceramics
ISTITUTO ITALIANO DI CULTURA, 82 Nicolson Street, EH8 9EW, 0131 668 2232
Ongoing arts lectures, exhibitions & performances; Italian classes
L'INSTITUT FRANÇAIS D'ECOSSE, West Parliament Square, EH1 1RF, 0131 285 6030
WHITESPACE GALLERY, 76 East Crosscauseway, EH8 9HQ, 0781 451 4771, whitespace76.com
November 5 - 11
Anne Gillies, Erica Wimbush, Karen Thomas, Lindsay Mathers and Sue do Porto. 5 On the Edge. Works
MUSEUM OF EDINBURGH, Huntly House, 142 Canongate, Royal Mile, High Street, EH8 8DD, 0131 529 4143
ALPHA ART GALLERY, 52 Hamilton Place, Stockbridge, EH3 5AX, 0131 226 3066
THE WRITERS' MUSEUM, Lady Stair's Close, EH1 2PA, 0131 529 4901
RICCIO GALLERY, 17 South Street, Dalkeith, Midlothian, EH22 1AH, 0131 660 2561
AMBER ARTS, 78 Montrose Terrace, Abbeyhill, EH7 5DP, 0131 661 1167
Picture Framers, Art Gallery and Printmaking Studio
SUMMERHALL, 1 Summerhall, EH9 1PL, 0131 560 1580
Ongoing
The Demarco European Art Foundation.
ART ET FACTS GALLERY, 19 Roseburn Terrace, EH12 5NG, 0131 346 7730
ROYAL FINE ART COMMISSION GALLERY, Bakehouse Close, 146 Canongate, Midlothian, EH8 8DD
LAURISTON CASTLE, 2a Cramond Road South, Davidson's Mains, EH4 5QD
DOUBTFIRE GALLERY, 3 South East Circus Place, EH3 6TJ, 0131 225 6540
Until November 27
Esther Donaldson. Wild Garden. First solo
QUEENSFERRY MUSEUM, 53 High Street, South Queensferry, West Lothian, EH30 9HP, 0131 331 5545
Helps visitors to explore the past and traditions of historic Queensferry and neighbouring Dalmeny
THE PEOPLE'S STORY MUSEUM, 163 Canongate, Royal Mile, EH8 8BN, 0131 529 4057
THE FINE ART SOCIETY, 6 Dundas Street, EH3 6HZ, 0131 557 4050
UPRIGHT GALLERY, 3 Barclay Terrace, EH10 4HP, 0131 221 0265

Until November 26
Jude Nixon & Mary Walters. Fragile Futures. Explores the beauty of glacial structures
& GALLERY, 17 Dundas Street, EH3 6QG
Until December 1
Emily Moore. From Berlin With Love. First solo
SCOTTISH ARTS CLUB, 24 Rutland Square, EH1 2BW, 0131 229 8157, www.scottishartsclub.com
Until November 27
The Scottish Portrait Awards 2021.
NATIONAL WAR MUSEUM, Edinburgh Castle, EH1 2NG, 0300 123 6789
Until January 30 2022
Legacies of Empire.
THE GRILLI GALLERY, 20A Dundas Street, EH3 6HZ, 0131 261 4264
NELSON MONUMENT, Calton Hill, EH7 5AA, 0131 556 2716
It was built in memory of Admiral Lord Nelson, who died at the Battle of Trafalgar in 1805
MUSEUM OF CHILDHOOD, 42 High Street, Royal Mile, High Street, EH1 1TG, 0131 529 4142
3D/2D, Unit 3, Albion Business Centre, 78 Albion Road, EH7 5QZ, 0131 661 6600, www.3d2d.co.uk, info@3d2d.co.uk
November 27 & 28 (10:30am-5:00pm)
Royal Concert Hall Christmas Fair. Shop 60+ Artists, Designers and Makers, who only sell their own work
December 4 & 5
Assembly Rooms Christmas Fair. Art, Craft and Design
HISTORIC ENVIRONMENT SCOTLAND, Longmore House, Salisbury Place, EH9 1SH, 0131 668 8600, www.historicenvironment.scot
November 19 - January 9 2022
Castle of Light. Expect wonder, enchantment and a spectacle of colour
THE EDINBURGH DRAWING SCHOOL, 13a Great King Street, EH3 6QW, 0131 556 0971, www.edinburghdrawingschool.co.uk, info@edinburghdrawingschool.co.uk
Until December 5
Autumn Term 2021.
January 17 2022 - April 3 2022
Spring Term 1 2022.

Falkirk
THE PARK GALLERY AND CALLENDAR HOUSE, Calender Park, FK1 1YR, 01324 503 789, www.falkirkcommunitytrust.org/venues/park-gallery, artsandcrafts@falkirkcommunitytrust.org
THE WEST END GALLERY, 3-45 West Bridge Street, FK1 5AZ, 01324 613 100
D2 THE CREATIVE CENTRE, Lochlands Business Park, Larbert, FK5 3NS, 01324 555 500
A fantastic exhibition space and 14 artists studios and work-spaces for rent or lease

Fife
KIRKCALDY MUSEUM & ART GALLERY, War Memorial Gardens, Abbotshall Road, Kirkcaldy, KY1 1YG, www.onfife.com/venues/kirkcaldy-galleries, kirkcaldy.galleries@onfife.com
November 11 - December 16
Lego Club. Learn new skills, meet new people and most importantly HAVE FUN as you construct, create and chill out!
November 20 - January 23 2022
Joy and Creativity - 60 Years of Kirkcaldy Art Club.
Until May 8 2022
RESolve: a Creative Approach to the Circular Economy.
CUPAR ARTS & HERITAGE PROJECT (CAHP), 5 Ashlar Park, Lovers Lane, Cupar, KY15 5AQ
PETE CURA PICTURE FRAMING, At the Gallery, Burnside, Cupar, KY15 4BH, 01334 652 353
Lino cuts by Barbara Robertson, Caricatures by Donald Smart, New editions by Sonas MacLean. Framing: over 100 mouldings to choose from
EAST NEUK OPEN STUDIOS, East Neuk, www.eastneukopenstudios.org
November 6 & 7 (Bowhouse St. Monas)
Christmas Art & Craft Market. Win a £50 voucher which can be spent at the market
MAISIE & MAC ART AND CONTEMPORARY CRAFT, 1 St. Catherine Street, Cupar, KY15 4LS, 01334 656 523, www.maisieandmac.com, info@maisieandmac.com
Paintings, prints, sculpture, textiles, ceramics, wood & metal from UK artists and makers
Ongoing
Art and Contemporary Craft -

Talking to Ahmed – on zoom

THE LATE journalist, A.A. Gill, scourge of restaurateurs and baboons, was more than a megawit. During the last years of his life, he took to heart the refugee crisis and wrote about it with remarkable poignancy. It was only when I saw pictures of children's bodies washed up on Greek beaches and unseaworthy dinghies, crammed with men, women and children, in the Mediterranean, that I paid much attention.

While we were in lockdown at the beginning of the year, a friend asked if I would chat each evening for 10 minutes via zoom with a refugee. Her migrant support group wanted to prevent them from giving up hope while they waited for their asylum claims to be considered.

Covid did them no favours. It restricted their movements further than normal. On arrival in the UK, the lucky ones were put in hotels in or near London; the unlucky shoved into old army barracks. Although they got three meals a day, laundry service, wifi and a few pounds a week subsistence, they were essentially adrift in a country whose language they were unable to speak.

Ahmed (not his real name) became my conversation partner. Looking younger than his 22 years, he came from Darfur in West Sudan where his older sisters, brothers and mother still lived. His father was killed when he was five, after which the family moved to a refugee camp.

Ahmed was bright, feisty and although his face betrayed signs of trauma, he had a disarming smile.

While I helped him with English irregular verbs, he taught me about football, his teams being Real, Madrid and Man. Utd.

There's nothing more sobering than seeing yourself through the eyes of someone else. Ahmed asked why so many Brits didn't eat meat, kept pets, had few children and sex outside marriage.

I blush at my thoughtlessness when telling him about our Sunday roast, showing photos of my house, modest in this country but a palace in theirs and speaking about my transatlantic flight when his journey of several years involved almost dying of thirst in the Sahara, risking his life, not only in lawless Libya, but on the voyage to Malta, where he was imprisoned, then travelling to Calais via Italy.

I never discovered how he crossed the Channel. Did he stow-away on a truck or pay a ransom to board a collapsible dinghy?

Prospects for asylum are not high for Ahmed. Last year, 14,365 initial decisions were made on 29,456 asylum applications; just under half (46%) were granted. Following an applicant's appeal, the final grant rate may be increased by 10% - 20%. In Europe, Germany takes the highest number (120,320) of asylum applicants, France accepts 96,030 and the UK, 25,355.

***MARY GLADSTONE**
**Gov.UK Home Office. National Statistics. Published 25/2/21*

Guide

Celebrating 10 Years. Fabulous work from UK artists & makers plus ethically sourced gifts from elsewhere
PITTENWEEM ARTS FESTIVAL, Festival Office, 47 High Street, Pittenweem, KY10 2PG, 01333 313 903, www.pittenweemartsfestival.co.uk, info@pittenweemartsfestival.co.uk
August 6 - 13, 2022
Pittenweem Arts Festival 2022.
WEEM GALLERY AND FRAMER, 16 High Street, Pittenweem, KY10 2LA, 01333 311535, www.weemgalleryandframer.co.uk, art@weemgalleryandframer.co.uk
Until January 8, 2022
Georgina Bown Exhibition
FUNKY SCOTTISH, 41 High Street, Pittenweem, KY10 2PG, 01333 312 567
JOHN NELSON STUDIO GALLERY, 26 Milton Place, (on A917 - 15mins from St Andrews), Pittenweem, KY10 2LS, 01333 312 112
Featuring paintings and prints by John Nelson
CULROSS POTTERY AND GALLERY @ BISCUIT CAFÉ, Sandhaven, Culross, (near Dunfermline), KY12 8JG, 01383 882176, www.culrosspottery.com, camilla@culrosspottery.com
FIRE STATION CREATIVE, Carnegie Drive, Dunfermline, KY12 7AN, 01383 721 564, www.firestationcreative.co.uk, sarah@firestationcreative.co.uk
Until November 28
Annual FSC Exhibition
FORGAN ART CENTRE, Cupar Road, Newport-on-Tay, DD6 8RA, 01382 542 062, www.forganartcentre.co.uk, info@forganartcentre.co.uk
CRAIL POTTERY, 75 Nethergate, The Square, Crail, KY10 3TX, 01333 451 212
Huge variety of handthrown stoneware, terracotta, earthenware & raku
SCOTTISH FISHERIES MUSEUM, St Ayles, Harbourhead, Anstruther, KY10 3AB, 01333 310 628
GRISELDA HILL POTTERY LTD, Kirkbrae, Ceres, Cupar, KY15 5ND, 01334 828 273
Wemyss Ware. Fife's famous hand painted pottery
KINGHORN GALLERY, Kinghorn, KY3 9RT, 01592 890 218
BALBIRNIE CRAFT CENTRE, Markinch, Glenrothes, Tayside, KY7 6NE, 01592 753 743
Alison & Roy Murray goldsmithing & jewellery; also at 20 Thistle Street, Edinburgh
TWIST FIBRE CRAFT STUDIO, 88 High Street, Newburgh, Cupar, KY14 6AQ, 01337 842 843
Workshops and supplies - knitting, weaving, spinning, felt making, natural dyeing. Natural fibre yarns, books, magazines, equipment and kits
FIFE FOLK MUSEUM, High Street, Ceres, KY15 5NF, 01334 828 180
OPEN STUDIOS NORTH FIFE, www.openstudiosfife.co.uk
Artists & makers open their workspaces to visitors the first full weekend in May annually
CONTEMPORARY ARTS DUNFERMLINE (CAD), Upper Mall, The Kingsgate, Dunfermline
Scottish artists work, mixed media, 2d, 3d, small sculpture work (ceramic, Glass and wood), Digital images
THE QUAY GALLERY, 33 High Street, Aberdeen, KY3 0SH, 01383 860 602
KIRKCALDY ART CLUB, Hot Pot Wynd, Dysart, Kirkcaldy, KY1 2TQ, 01592 203270
Painting classes, Monday 2-4pm and 7-9pm, Tuesday 7-9pm and Thursday 10-noon. Pottery classes, Monday 10-12pm and 7-9pm, Tuesday 7-9pm and Wednesday 2-4pm
BIRCHWOOD COTTAGE GALLERY & TEAROOM, Balmungo, St Andrews, KY16 8LW, 01334 208220
Gallery/tearoom just outside St Andrews on the B9131. Mixed rolling exhibition of original art work and prints by local artists
ST. ANDREWS ART CLUB, 14c Argyle Street, St Andrews, KY16 9BP, www.standrewsartclub.co.uk
PAGE POTTERY GALLERY, 49 High Street, Pittenweem, KY10 2PG, 01333 311402
GREENGATE GALLERY, Sandhaven, Culross, KY12 8JG, greenategallery@gmail.com
Fort William
ART LOCHABER, Lochaber, www.artlochaber.co.uk
A group of artists living in Lochaber,
LIME TREE AN EALDHAIN GALLERY, Achintore Road, PH33 6RQ, 012397 701 806, www.artfortwilliam.co.uk, info@limetreefortwilliam.co.uk
David Wilson Paintings
Ongoing
David Wilson. Art Fort William. Paintings & Prints
THE HIGHLAND BOOKSHOP, 60 High Street, PH33 6AH, www.highlandbookshop.com
60 High Street, Fort William PH33 6AH
Glasgow
KELVINGROVE ART GALLERY & MUSEUM, Argyle Street, G3 8AG, 0141 287 2699
GALLERY OF MODERN ART (GOMA), Royal Exchange Square, G1 3AH, 0141 287 3050
Until February 20 2022 (Modern Two)
Ray Harryhausen. Titan of Cinema. A series of films
GLASGOW SCHOOL OF ART, 167 Renfrew Street, G3 6RQ, 0141 353 4589, www.gsa.ac.uk
November 23 & 24 (Manchester Central Windmill Street Manchester M2 3GX)
GSA Open 2021. Meet with the GSA at the forthcoming Create Your Future Fair in Manchester
RGI KELLY GALLERY, 118 Douglas Street, G2 4ET, 0141 248 6386, www.royalglasgowinstitute.org/kelly.html, gallery@royalglasgowinstitute.org
November 26 - December 3
Sheena Graham. Metamorphosis.
December 9 - January 15 2022
Christmas Show 2021.
GLASGOW ART CLUB, 185 Bath Street, G2 4HU, 0141 248 5210, www.glasgowartclub.co.uk, info@glasgowartclub.co.uk
Until December 4
Art of the Possible. Focussing on Climate Change & Sustainability and featuring work by the Club's elected artists and the students and staff of The Glasgow School of Art
GLASGOW MUSEUM RESOURCE CENTRE, 200 Woodhead Road, South Nithill Industrial Estate, G53 7NN, 0141 276 9300
THE GLASGOW GALLERY, 182 Bath Street, G2 4HG, 0141 333 1991, www.glasgowgallery.co.uk, info@glasgowgallery.co.uk
November 27 - January 29 2022
John Lowrie Morrison - Jolomo.
COMPASS GALLERY, 178 West Regent Street, G2 4RL, 0141 221 6370, www.compassgallery.co.uk, web@compassgallery.co.uk
CYRIL GERBER FINE ART, 178 West Regent Street, G2 4RL, 0141 221 3095, www.gerberfineart.co.uk, mail@gerberfineart.co.uk
Until December 31
Joan Eardley, Fergusson, Hunter, Peploe & Cadell, James Paterson, Jessie M King, Annie French. Steven Campbell, Peter Howson, Alison Watt, Ken Currie, Colquhoun & MacBryde, JD Fergusson, William McCance, Vincent Butler and others. The Winter Collection 2021.
GLASGOW MUSEUMS, Culture and Sport Glasgow, 20 Trongate, G1 5ES, 0141 287 4350
Call or visit website for full details
ST MUNGO MUSEUM OF RELIGIOUS LIFE AND ART, 2 Castle Street, Glasgow City, G4 0RH, 0141 276 1625
RIVERSIDE MUSEUM, 1 Bunhouse Road, G3 8DP, 0141 287 2720
Scotland's Museum of Transport and Travel
Until December 17 2022
Dorothee Pullinger
SCOTLAND STREET SCHOOL MUSEUM, 225 Scotland Street, G5 8QB, 0141 287 0500
Until January 1 2022
GlaswegAsians. Celebrating 150 years of South Asian and Muslim history in Glasgow
CENTRE FOR CONTEMPORARY ARTS (CCA), 350 Sauchiehall Street, G2 3JD, 0141 352 4900
MACKINTOSH CHURCH, CRM Society, Queen's Cross Church, 870 Garscube Road, G20 7EL, 0141 946 6600, www.crmociety.com, trish@crmociety.com
Until December 31
Mackintosh Online Talks. A series of online talks on Mackintosh and his contemporaries
THE HUNTERIAN MUSEUM AND ART GALLERY, University of Glasgow, University Avenue, G12 8QQ, 0141 330 4221
Ongoing
Permanent Displays. Highlight various aspects of our extensive collections
MCLELLAN GALLERIES, 270 Sauchiehall Street, G2 3EH, 0141 565 4137
THE ANNAN GALLERY, 164 Woodlands Road, G3 6LL, 0141 332 0028

Tessa Williams

THE SCENTS WE MISSED FROM LOCKDOWN



Let the new Fragrance Collection of the scents we missed from lockdown evoke the spirit of what we missed most
3 beautiful new perfumes by Tessa Williams x 4160 Tuesdays

Use code: **AW15** for 15% off

Come and visit us at the Pop-Up Shop November and December weekends, AB41 7RS

WWW.TESSAWILLIAMS.CO.UK

The

Until November 21
Rosanne Barr, Serenity. Solo - over 30 new works
November 27 - February 6 2022
The Winter Show 2021.

ROGER BILLCLIFFE GALLERY, 134 Blythswood Street, G2 4EL, 0141 332 4027

EWAN MUNDY FINE ART, 01436 821 533

GLASGOW PRINT STUDIO GALLERY, 48 King Street, G1 5QT, 0141 552 0704

Until November 27
James and Ed Harrison.

GLASGOW SCULPTURE STUDIOS, The Whisky Bond, 2 Dawson Road, G4 9SS, 0141 353 3708

PLATFORM, The Bridge, 1800 Westerhouse Road, G34 9JW, 0141 276 9696

TRAMWAY, 25 Albert Drive, G41 2PE, 0141 276 0950

STREET LEVEL PHOTOWORKS, 48 King Street, Trongate 103, G1 SHD, 0141 552 2151

Until December 19
Peter Kennard. Code Red. A print installation

GALLERY III, 25 King Street, Townhead, G1 5QZ, 0141 552 0704

WASPS ARTISTS STUDIOS, The Brigatig, 141 Bridgegate, G1 5HZ, 0141 553 5890

Until November 22
Scottish Civic Trust - My Place Exhibition.

ARTERIES GALLERY, 185a Bath Street, G2 4HU, 0141 222 2830

PULP PAPER ARTS WORKSHOP, WASPS Factory, 77 Hanson Street, Dennistoun, G31 2HF, 0141 337 2842, www.paperartsworkshop.co.uk, alison.paperprintbook@virgin.net

SCOTTISH ARTISTS' BENEVOLENT ASSOCIATION, Second Floor, 5 Oswald Street, G1 4QR, www.scottishartistsbenevolentassociation.co.uk

Empowered by the TOD Endowment Fund to provide holidays in Scotland for artists (resident in Scotland for at least two years) who are experiencing difficulties

Ongoing
Holiday in Scotland. Providing holidays in Scotland (through 'The TOD Endowment Fund') for artists (resident in Scotland for at least two years) who are experiencing difficulties. Please visit our website for more details

THE ROYAL SCOTTISH SOCIETY OF PAINTERS IN WATERCOLOUR (RSW), 5 Oswald Street, G1 4QR, 0141 248 7411, www.rsw.org.uk, info@rsw.org.uk

The Royal Scottish Society of Painters in Watercolour
December 11 - 27 (Hand-in November 28th & 29th)

The RSW 141st Annual Exhibition.

LILLIE ART GALLERY, Station Road, Milngavie, G62 8BZ, 0141 956 5536, www.edlc.co.uk/heritage-arts/exhibitions/lillie-art-gallery-exhibitions

Until December 22 (Galleries 2 & 3)

Barbara Robertson. A Retrospective Exhibition 1945 - 2018

Until August 21 2022
John Inglis - Recent and New Works on Paper. Watercolour, oil and drawing

PEOPLE'S PALACE, Glasgow Green, G40 1AT, 0141 550 0892

UNLIMITED STUDIOS, 25 Hyndland Street, G11 5QE, 0141 338 6052

ART FORUM, 50 Station Road, Milngavie, G62 8AB, 0141 956 6765

Mixed exhibition of work including Peter Howson, Pam Carter, Mary Davidson, Walter Awlson, Marion Drummond and many more

NATIONAL MUSEUM OF RURAL LIFE, Wester Kittochside, Philipshill Road, East Kilbride, G76 9HR, 0300 123 6789

Escape to the countryside for the day to explore the 1950s working farm and museum

Until April 17 2022
The Typewriter Revolution. From early machines to modern style icons

KELVIN HALL, Argyle Street, G3 8AW, 0141 276 1450

Explore items from the Glasgow history, archaeology, furniture and education collections

HOUSE FOR AN ART LOVER, 10 Dumbreck Road, G41 5BW, 0141 353 4770

HILLHEAD LIBRARY, Byres Road, G12 8AP, 0141 276 1617

EAST KILBRIDE ARTS CENTRE, 51-53 Old Coach Road, East Kilbride, G74 4DU, 01355 261 000, www.sleisureandculture.co.uk/info/48/east_kilbride

arts_centre

AULD KIRK MUSEUM, Cowgate, Kirkintilloch, East Dunbartonshire, G66 1HN, 0141 578 0144

Until December 22
Barbara Robertson - A retrospective Exhibition 1945 - 2018.

CASS ART, 63-67 Queen Street, G1 3EN, 0207 619 2601

For all your art supplies and gifts

PATRICIA FLEMING PROJECTS, 2nd Floor, 60-64 Osborne Street, G1 5QH

GOVAN PROJECT SPACE, 249 Govan Road, G51 1HJ

INVERNESS

INVERNESS MUSEUM & ART GALLERY, Castle Wynd, IV2 3EB, 01463 237114

CASTLE GALLERY, 43 Castle Street, IV2 3DU, 01463 729 512, www.castlegallery.co.uk, info@castlegallery.co.uk

Until December 24
Various artists. Christmas Mixed Exhibition. Featuring paintings, jewellery and crafts by a range of gallery artists

HIGHLAND PRINT STUDIO, 20 Bank Street, IV1 1QU, 01463 718 999, www.hIGHLANDPRINTSTUDIO.CO.UK, info@hIGHLANDPRINTSTUDIO.CO.UK

Open access print studio and education facility.

EDEN COURT THEATRE, Eden Court, Bishops Road, IV3 5SA, 01463 234 234

PICTURE THIS, 18 Church Street, IV1 1EB, 01463 238823

SCOTTISH FLAIR ART GALLERY, 11 Bank Street, IV1 1QY, 01463 248 500

INVERNESS-SHIRE

1896 GALLERY, Deshar Rd, Boat of Garten, PH24 3BN, 01479 831 111, www.1896gallery.com

Art, photography, crafts, jewellery, books, cards and calendars

CARRBRIDGE ARTISTS' STUDIO, Main Street, Cairngorms National Park, Carrbridge, PH23 3AS, 01479 841 328, www.carrbridgestudios.com, alice@carrbridgestudios.com

Work by resident artists Jeff & Alice Buttress.

LOCH SHIEL SPRING FESTIVAL, c/o Station Cottage, Glenfinnan, PH37 4LT, 01397 722 334

GLENFINNAN STATION MUSEUM, Station Cottage, Glenfinnan, PH37 4LT, 01397 722 295

THE LAUNDRY GALLERY, Aviemore, PH22 1ST

Isle of Arran

STUDIO 4, Shore Road, Lamlash, KA27 8LA, 01770 600 919

Lively contemporary art,

Isle of Bute

MOUNT STUART, Mount Stuart, PA20 9LR, 01700 503 877

Isle Of Harris

SKOON ART CAFE, 4 Georab, HS3 3HB, 01859 530 268

Original oils and exclusive art cards from resident artist Andrew John Craig

Isle of Islay

THE GALLERY, Bowmore Distillery Visitor Centre, School Street, Bowmore, PA43 7JS, 01496 810 441

Regular exhibitions by local artists

Isle of Lewis

AN LANNTAIR, Town Hall, Kenneth Street, Stornoway, HS1 2DS, 01851 703 307

Until November 27
Gillian Macfarlane, Su Grierson, Inge Panneels, Kyra Clegg. Confluence of North: Spirit of North.

HARBOUR VIEW GALLERY, Port of Ness, HS2 0XA, 01851 810 735

Original paintings and prints by Anthony J Barber

MORVEN GALLERY, Upper Barvas, Outer Hebrides, HS2 0QX, 01851 840 216

Changing exhibitions of original art, crafts, photography & tapestry weaving

Isle of Skye

DANDELION DESIGNS, Stein, Watnish, IV55 8GA, 01470 592 218, www.dandelion-designs.co.uk

Permanent exhibition of many contemporary and traditional artists, and an interesting range of crafts

SANDBANK STUDIO, Old Pier Road, Sandbank, Broadford, IV49 9AE, 01471 822 011, www.duncancurrie.net, duncan.currie@tiscali.co.uk

Wide range of original paintings

ArtWork

What does it take to make a city?

AS A RESIDENT of Livingston for many years, I have observed it become a well-populated, bustling town; it has accomplished much over the almost sixty years since its inception in 1962.

The main focus of the town is the massive indoor shopping complex. There is a football club and grounds – Livingston FC are doing okay and this brings a buzz to the town especially when they are at home to big teams.

There is heritage in the form of industry, with shale mining looming large in the history of the area, and later the location of a silicon valley. Also, contrary to the idea of new towns as concrete jungles, Livingston has an abundance of green spaces, in short, it has a lot going for it.

Now for the bad news – there is hardly any CULTURE. Regular readers of *ArtWork* will be aware that I have, on many occasions, bemoaned this situation. There is, sadly, no sign of improvement. Indeed, since the pandemic started those responsible for nurturing and encouraging development in the arts and culture in West Lothian seem to have gone into hiding.

This is one of the main reasons why Livingston might struggle with its bid for city status in 2022, part of a competition to celebrate the Queen's Platinum Jubilee. The bid coincides with Livingston's 60th anniversary and it seems that those responsible think that the town has what it takes to become a city.

Certainly, Livingston has witnessed a meteoric rise from three small villages with just sixty households to the metropolis it is today, but is that enough? A working group has been set up to prepare the application. A spokesperson for the group states that "Livingston is a vibrant community with a unique identity", they claim that the town is a hub for developing "economy and jobs, culture and leisure, retail administration and residential".

Well, this is not strictly true since, as I said before, there is little or no cultural presence in Livingston. I know this because I am personally involved with the cultural sector. A sorry statistic from the *West Lothian News* website will help to illustrate my point.

You will find under the category of Education nine pages of news. Two pages for Health and Fitness, six pages on Environment and Outdoors, five pages on Development and Transport – and on Culture and Leisure – NOTHING.

Livingston is growing, but it is not all about size, there is fierce competition vying for city status and I doubt whether population numbers will decide the outcome in the end.

Another contender is the town of Middlesbrough whose mayor is quoted as saying: "It's got nothing to do with having a cathedral or how big your population is – it's about ambition." I dare say the other competing towns will have this on their minds too with towns such Reading, Swindon, Wrexham, Dunfermline and Dumfries in the running.

Perhaps Livingston's main rival will be

Milton Keynes since, as a new town, it bears some similarities. There seems to be no reason why new towns should not become cities, I believe Milton Keynes has applied several times before unsuccessfully.

Perhaps there is a stigma attached to the newer environments, that is, they are just not seen in the same light as the older towns with history and yes, dare I say it – cathedrals.

Milton Keynes, however, is taking on the challenge by launching cultural related initiatives to involve the people of the town, such as a flag designing competition, a tree planting scheme and the opportunity to share much-loved photographs and memories of their town. I have not, as yet, come across anything like this which involves the community in such an inclusive way in the Livingston bid.

The mayor of Middlesbrough has got a point when he talks about the difference between valuing population size and ambition. A report by West Lothian's Economic Development and Regeneration manager, with regard to the city status bid, seems to think that size matters.

The report states that "from being a village to a new town and centre of regional development the next logical step would be to gain full city status."

This is naïve and, with respect, it is also arrogant to think that this is enough to fulfill the intellectual and cultural needs of the residents of Livingston. I wish the town well with its bid, but until it has more of a cultural identity it is not ready for this 'next logical step.'

CATHY BELL





Gracefield Arts Centre
www.dgculture.co.uk

13 Nov 2021 - 8 Jan 2022

Southwest Scotland Printmakers



Over 25 artists showing a selection of framed and unframed original prints using etching, linocut, screenprint, collagraph and other printmaking techniques in a special Christmas exhibition.

28 Edinburgh Road, Dumfries DG1 1JQ
art@dumgal.gov.uk | www.dumgal.gov.uk

Dumfries & Galloway

Gallery Q Original paintings, glass, ceramics, and much more



Queen's Hotel Buildings, Nethergate DD1 4DU Tel: 01382 220600
www.galleryq.co.uk

Guide

by Duncan Currie and works by Pam Carter and other well-known Scottish artists

Ongoing
Duncan Currie. Wide range of original paintings

AROS SKYE HERITAGE CENTRE, Viewfield Road, Portree, IV51 9EU, 01478 613 750

Video exhibition of Skye scenery and local history

EDINBANE POTTERY, Edinbane, Portree, IV51 9PW, 01470 582 234

GALLERY AN TALLA DEARG, Ornsay, Sleat, IV43 8QR, 01471 833 439, www.eileaniamain.co.uk, hotel@eilean-iarmain.co.uk

DIANA MACKIE, 10 Borreraig Park, Dunvegan, IV55 8ZX, 01470 511 795

Working studio and gallery - paintings depict the climatic changes of the Highlands and Islands

ORBOST GALLERY, Half Bolevan, nr Dunvegan, IV55 8ZB, 01470 521 207

Selling exhibitions of professional artworks by local artists in Skye & Highlands

RAVEN PRESS GALLERY, Colbost, Dunvegan, IV55 8ZS, 01470 511 748

Wood engravings of landscape and wildlife. Resist dyed silks and hand knit design. Working studio of engraver Kathleen Lindsley

Kelso

THE VENNEL GALLERY, Denise Playfair, 11 Bridge Street, TD5 7HT, 01573 224 003, vennelgallery@live.co.uk

Bespoke Picture Framer. Animal portrait commissions. Art and needlework supplies

KELSO POTTERY, The Knowes, 100 metres behind Kelso Abbey, TD5 7BH, 01573 224 027

Mugs, jugs, bowls & 'Time Tablets' fired in the Kelso Pit Kiln

Kingussie

IONA GALLERY, Duke Street, PH21 1JG, 01540 664 535, www.theionagallery.com

Regular exhibitions by local artists in 'handmade in the Cairngorms'

Ongoing
Online gallery and shop. The Print Shop is now open for online purchases of the 2021 Artists Calendar and all the Limited Edition Prints

December 4 - 11
Christmas Art & Craft Fair.

Kirkcudbright

KIRKCUDBRIGHT GALLERIES, St Mary Street, DG5 4AQ, 01567 331 276, www.kirkcudbrightgalleries.org.uk

Until November 28
Nickie Newsum, Laura Derby, Catherine Coulson, Claire Cameron-Smith, Ian Cameron-Smith, Cate Ross, Hannah Morris, Ian Cameron-Smith, Lizzie Farey, Maggie Ayres, Margaret Milligan, Marianne Davidson, Patti Lean, Ross Fleming and Sarah Thomas. wasps_10 Years On.

HARBOUR COTTAGE GALLERY, Castlebank, Kirkcudbright, DG6 4JL, 01557 330 073, www.harbourcottagegallery.org.uk

November 15 - 20
KSJ Art.

November 22 - December 4
Kirkcudbright Crafts Association.

December 6 - 18
Christmas Fayre.

PROFESSIONAL ARTISTS POP UP SHOP, 67 St Mary's Street, DG6

Applied Art from 20 artists living and working in Dumfries and Galloway

HIGH ST. GALLERY, 84 High Street, Kirkcudbright, DG6 4JL, 01557 331 660

THE WHITEHOUSE GALLERY, 47 St Mary Street, Kirkcudbright, DG6 4DU, 01557 330 223

November 6 - January 8 2022
Mixed group exhibition includes a wide and varied selection of paintings, ceramics, mosaics, glass, textiles, sculpture, clocks, jewellery and much more.

OCHRE GALLERY & STUDIO, 76 High Street, Kirkcudbright, DG6 4JL, 01557 428 088, www.ochregallery.co.uk

Working gallery and studio

THE STEWARTRY MUSEUM, 47 St Mary's Street, Kirkcudbright, DG6 4DU, 01557 330223

TOLBOOTH ARTS CENTRE, High Street, Kirkcudbright, DG6 4JL, 01557 331 556

THE FAED GALLERY, 56 High Street, Gatehouse of Fleet, DG7 2HP, 01557 814 458

CORNERWAYS STUDIO/GALLERY, 7 Selkirk Road, Kirkcudbright, DG6 4BL, 01557 331 640, www.cornerwaysart.co.uk/studio/, enquiry@cornerwaysart.co.uk

Miniature paintings & larger works in oil, pastel & watercolour by Jane B Gibson

KIRKCUDBRIGHT ARTS & CRAFTS TRAIL

ARTISTS & MAKERS POP-UP SHOP, Mill on the Fleet Visitor Centre, 65 High Street, Gatehouse of Fleet, DG7 2HS, 01556 814 099

Stocked and staffed by local professional designer makers

Lanarkshire

IRONWORKS GALLERY, Summerlee Heritage Park, Heritage Way, Coatbridge, ML15 1QD, 01236 431 261

Call for details

GOLD AND SILVER-ETC ART GALLERY, 41 High Street, ML11 7LU, 01555 665 342

Work by June Shirreffs, inc. Bespoke jewellery, Quality handbags

WILLIAM WILSON FINE ART PHOTOGRAPHER, 75 Hyndford Road, ML11 9AU, 01555 660 023

Limited edition gicl  fine art prints and canvases

SUMMERLEE MUSEUM, Heritage Way, Coatbridge, ML15 1QD, 01236 638460

KILN SERVICES, Unit 8/11, Whistleberry Park Industrial Estate, Hamilton, ML3 0ED, 01698 822032, www.kiln-services.co.uk, sales@kiln-services.co.uk

We supply, maintain and repair kilns and wheels.

Scottish agents for Potclays & Potterycrafts supplying clay, glazes and tools

BIGGAR AND UPPER CLYDESDALE MUSEUM, 156 High St Biggar, Biggar, ML12 6DH, 01899 221 050

DOUGLAS DAVIES GALLERY, Loanfoot, Skirling, Biggar, ML12 6HD, 01899 860254, www.douglasdaviesrsw.co.uk, www.douglasdaviesrsw.co.uk/contact.html

Lancashire

BLACKBURN MUSEUM & ART GALLERY, Museum Street, Blackburn, BB1 7AJ, 01254 667 130

Call for details

Until December 31
Get Crafty at Home. With Baxter the Badger

Until May 28 2022 (Saturdays only)

Get Crafty. Free Arts and Crafts Activities

KEN BROMLEY ART SUPPLIES, Unit 13 Lodge Bank Estate, Crown Lane, Horwich, Bolton, BL6 5HY, 01204 690114

BACK-RIDGE GALLERY, Twitter Lane, Waddington, Clitheroe, BB73LQ, 01200 427304

Former working farm has been transformed into a work-haven for local designers and craftsman

PETER SCOTT GALLERY, Lancaster University, LA1 4YW, 01524 594 151

Until December 14
Andy Goldsworthy, Norman Adam, Bettina Carpi, Gary Lloyd, Rebecca Chesney and Mary Talbot. Shifting Currents.

LYTHAM HERITAGE CENTRE, 2 Henry Street, Lytham, FY8 5LE, 01253 730787

November 30 - December 5
Christmas Fayre Week. Buy original gifts by local artists and crafts people

Leeds

HAREWOOD HOUSE, Harewood House Trust, Harewood House, Harewood, LS17 9LG, 0113 218 1010

The

lage, Wirral, CH62 5EQ, 0151 478 4136
THE WALKER, William Brown Street, L3 8EL, 0151 478 4199

Livingston

HOWDEN PARK CENTRE, Arts Services, West Lothian Council, Howden Park Centre, EH54 6AE, 01506 777 666
Until November 30
Ballet - Level 1-2.

London

THE BRITISH MUSEUM, Great Russell Street, Bloomsbury Square, WC1A 2RJ, 0207 323 8181

Until January 30 2022
Katsushika Hokusai. The Great Picture Book of Everything.

NATIONAL MARITIME MUSEUM, Romney Road, Greenwich, SE10 9NF, 0208 858 4422

November 6 - August 7 2022
Astronomy Photographer of the Year.

THE NATIONAL GALLERY, Trafalgar Square, WC2N 5DN, 0207 747 2885

Until January 2 2022
Poussin. Poussin and the Dance.

THE BARBICAN, Silk Street, EC2Y 8DS, 0207 638 4141

Until December 23
How We Live Now. Reimagining spaces with Matrix Feminist Design Co-operative

Until January 9 2022
Isamu Noguchi. Noguchi.

TATE MODERN, Bankside, SE1 9TG, 0207 887 8008

Until January 16 2022
Anicka Yi. Hyundai Commission: Anicka Yi.

Until June 12 2022
Yayoi Kusama. Infinity Mirror Rooms.

TATE BRITAIN, Millbank, SW1P 4RG, 0207 887 8888

Until January 3 2022
Serafine1369. From darkness into darkness.

Until January 23 2022
Heather Phillipson. Rupture No.1: Blowtorching the Bitten Peach.

Until March 20 2022
William Hogarth. Hogarth and Europe.

BANKSIDE GALLERY, 48 Hop-ton Street, (Next to Tate Modern), SE1 9JH, 0207 928 7521.

November 17 - 21
New Light Prize Exhibition.

November 22 - 28
Art Makes Art.

NATIONAL PORTRAIT GALLERY, St Martin's Place, WC2H 0HE, 0207 306 0055

HAYWARD GALLERY, South Bank Centre, Belvedere Road, SE1 8XX, 08703 800 400

Until December 12
Gerhard Richter. Gerhard Richter: Drawings, 1999 àc 2021. Mixing It Up: Painting Today. exhibition of 31 artists

MALL GALLERIES, The Mall, near Trafalgar Square, SW1Y 5AH, 0207 930 6844, www.mallgalleries.org.uk, info@mallgalleries.com

November 25 - December 5
Royal Society of Miniature Painters, Sculptors and Gravers. 125th Anniversary Exhibition.

November 24 - December 5
Royal Institute of Oil Painters Annual Exhibition 2021.

GREEN & STONE OF CHELSEA, 251-253 Fulham Road, SW3 6HY, 0207 352 0837, www.greenandstone.com, mail@greenandstone.com

November 22 - 26
Mariella Baldwin. Mariella Baldwin.

November 29 - December 1
David Stogdale. David Stogdale.

IMPERIAL WAR MUSEUM, Lambeth Road, SE1 6HZ, 0207 416 5320

- December 31
Generations: Portraits of Holocaust Survivors.

Until January 9 2022
Wim Wenders: Photographing Ground Zero.

THE QUEEN'S GALLERY, Buckingham Palace, SW1A 1AA, 0207 766 7301

November 25 - January 31 2022
The Princess' Pantomimes.

THE ROYAL ACADEMY OF ARTS, Burlington House, Piccadilly, W1J 0BD, 0207 300 8000

Until January 2 2022
Summer Exhibition 2021.

Until January 23 2022
H&C's ne Binet. Light Lines. Architectural photographs

GUILDHALL ART GALLERY & ROMAN LONDON'S AMPHITHEATRE, Guildhall Yard, Off Gresham Street, EC2V 5AE, 0207 332 3700

Until December 15
Tangerine Dream: Zeitraffer. reveals London's key role in the international breakthrough of Tangerine Dream during the

1970s
MUSEUM OF LONDON, 50 London Wall, EC2Y 5HN, 0207 001 9844

November 7 - February 24 2022
London Making Now.

DULWICH PICTURE GALLERY, Gallery Road, Dulwich Village, SE21 7AD, 0208 693 5254

Until April 18 2022
Monet and Frankenthaler. 2 Helen Frankenthaler. Radical Beauty.

GREENWICH PRINTMAKERS GALLERY, 1a The Market, Greenwich, SE10 9HZ, 0208 858 1569

Original Artist Prints at affordable prices

CONTEMPORARY SCULPTURE GALLERIES, 108 Old Brompton road, SW7 3RA., 0207 373 8615

At Royal British Society of Sculptors

VICTORIA AND ALBERT MUSEUM, Cromwell Road, SW7 2RL, 0207 942 2000

Until November 28
Jameel Prize. Poetry to Politics.

Until December 31
Alice: Curiouser and Curiouser.

Until January 16 2022
Bags: Inside Out.

CONTEMPORARY APPLIED ARTS, 2 Percy Street, W1T 1DD, 0207 436 2344

OPERA GALLERY, 134 New bond Street, W1S 2TF, 0207 491 2999

Until November 14
Chu Teh-Chun. Hermann Nitsch. Georges Mathieu.

Until December 8
Cho Sung-Hee: Paradise Regained.

Until December 18
Jean Dubuffet, Bal des Figures.

LA GALLERIA PALL MALL, Unit 30, Royal Opera Arcade, SW1Y 4UY, 0207 930 8069

JACKSONS ART SUPPLIES LTD, 1 Farleigh Place, N16 7SX, 0844 499 8430, www.jacksonsart.com, sales@jacksonsart.co.uk

SAATCHI GALLERY, Duke Of York's HQ, King's Road, SW3 4RY, 020 7811 3081

Until November 28
The Thousand Year Kingdom.

Until December 5
Alo. LIMINAL.

Until January 22 2022
London Grads Now.

ALEXANDRA PALACE, Alexandra Palace Way, N22 7AY, 0208 365 2121

The People's palace. A centre of music, sport and events for over 130 years

DESIGN MUSEUM, 28 Shad Thames, SE1 2YD, 020 7403 6933

November 6 - January 31 2022
Waste Age: What can design do?

HALCYON GALLERY, 144-146 New Bond Street, W1S 2PF, 0207 100 7144.

Until November 30
Soft Focus.

ESPACIO GALLERY, 159 Bethnal Green Road, E2 7DG

PIANO NOBILE, 129 Portland Road, Holland Park, W11 4LW, 020 7229 1099

November 27
Gallery Talk with historian & biographer Matthew Sturgis.

HORNSEY TOWN HALL ARTS CENTRE, The Broadway, Crouch End, N8 9JJ

Manchester

THE WHITWORTH ART GALLERY, The University of Manchester, Oxford Road, M13 6ER, 0161 275 7451

LOWRY ARTS & DIGITAL WORLD CENTRE, Pier 8, Salford Quays, Salford, M5 2AZ, 0161 876 2000

MANCHESTER ART GALLERY, Mosley Street, M2 3JL, 0161 235 8888.

November 20 - February 27 2022
Bernardo Bellotto. Views on a Fortress.

Until May 1 2022
Suzanne Lacy. Uncertain Futures and Cleaning Conditions.

CENTRE FOR CHINESE CONTEMPORARY ART, Market Buildings, Thomas Street, Northern Quarter, M4 1EU, 0161 832 7271

Call for details

Moray

MORAY ART CENTRE, The Park, Findhorn, IV36 3TA, 01309 692 426, www.morayartcentre.org

Until December 5
Covenant - Life Beyond the Wire

THE GALLERY, Elgin Library, Cooper Park, Elgin, IV30 1HS, 01343 562 600

Exhibitions by local artists and craftspeople

ArtWork

HENDERSON ARTSHOP

FRAMING
PRINTS
MATERIALS

28A RAEBURN PLACE
STOCKBRIDGE
0131 332 780

INFO@HENDERSONARTSHOP.COM

HENDERSONARTSHOP.COM

1896 EIGHTEEN NINETY SIX GALLERY

Scottish landscape art exhibitions
Also artisan gifts, ideal for Christmas



Open Thursday - Saturday 10 - 5pm
Boat of Garten

See our artwork and Winter opening times at 1896gallery.com
01479831111

Artwork framing
Bespoke, hand-finished
Antique restoration
Conservation standard
Gilding service
Traditional water & oil
Frames & furnishings

Jeni Frame

jeniframe.co.uk

07967 444592

Weem Gallery

16 High St, Pittenweem, Fife



Georgina Bown Exhibition
16th October 2021 - 8th January 2022

Original painting and prints by
Georgina Bown and Jan Fisher.
Homeware by Humblewood
Ceramics by Juliet McLeod

01333 311535
www.weemgalleryandframer.co.uk



HIGHLAND STEAM

A Scrapbook of Images from the Kyle, Mallaig and Highland lines - Large format paperback, with 160 pages of glorious colour pictures of steam in a Highland setting

978 0905498 90 2 - Price : £9.99

Northern Books
From Farnham
www.northernbooks.co.uk



SHOP ONLINE
UK MAIL ORDER
& LOCAL DELIVERIES
www.EdinburghArtShop.co.uk

TRADE COUNTER

Kiln Services Scotland Ltd

We supply, maintain and repair kilns and wheels.
Scottish agents for Potclays & Pottery crafts supplying clay, glazes and tools.

Kiln Services Scotland Ltd

8/11 Whistleberry Park Industrial Estate, Burnbank, Hamilton, ML3 0ED

Tel: 01698 822032

www.kiln-services.co.uk



Guide

LEAP STUDIO & GALLERY, 17 Victoria Street, Craigellachie, Aberlour-on-Spey, AB38 9SR, 01340 881226

Unique display of whisky related art

LOGIE STEADING ART GALLERY, Logie, Dunphail, Forres, IV36 2QN, 01309 611 378

Shows of contemporary art in the gallery by local artists. Six miles south of Forres on the A940

A'ANSIDE, Main Street, Tomintoul, AB37 9EX, 01479 872 074

Scottish Art, ceramics and sculpture - craftsmanship at its best - etchings, pottery, sporting prints

MORAY COLLEGE UHI, Moray Street, Elgin, IV30 1JJ, 01343 576 413, www.moray.ac.uk

FALCONER MUSEUM, Tolbooth Street, Forres, IV36 1PH, 01309 673 701

THE BOOKMARK, 34 High Street, Grantown-on-Spey, PH26 3EH, 01479 873433

Morayshire

THE HIGH ST MERCHANTS, 74 High Street, Grantown-on-Spey, PH26 3EL, 01479 872246, www.thehighstmerchants.com, thehighstreetmerchants@gmail.com

Cafe - Gallery - Bar. Beautiful selection of Fine Art, crafts & Photography, home baking, coffee, lunch & evening meals Friday & Saturday

Nairn

NAIRN BOOK AND ARTS FESTIVAL, 53 King Street, IV12 4NP, 01467 451 804, www.nairnfestival.co.uk, enquiries@nairnfestival.co.uk

BOATH HOUSE, Auldearn, IV12 5TE, 01667 454 896

Changing exhibitions by Scots contemporary artists

CAWDOR CASTLE, Cawdor, IV12 5RD, 01667 404 401

THE COURT HOUSE, THE SEAMAN'S HALL, IV12 4AU, 01667 458510

GREENTREE ARTS STUDIO, The School House, Ferness, Nairnshire, IV12 5UP, 01309 651 319

Studio spaces, workshops and art therapy

ORIGINAL SPINNING ARTS STUDIO, 32 Park Street, IV12 4PN, 01667 454004, susiealexander123@btinternet.com

Innovative textile art by former Royal ballerina

Northumberland

MARY ANN ROGERS, West Woodburn, Hexham, NE48 2SE, 01434 270 216, www.marogers.com, info@marogers.com

Vibrant wildlife and landscape painting, prints, cards and luxury gifts. (Advised to ring in advance.)

QUEEN'S HALL, Beaumont Street, Hexham, NE46 3LS, 01434 652 477

Visit website for full programme

SARAH RISEBOROUGH, 21 The Gables, West Street, Belford, NE70 7QB, 01668 213618

SHIRE POTTERY, Miller's Yard, Prudhoe Street, Alnwick, NE66 1UW, 01665 602 277

WESTSIDE CONTEMPORARY FINE ART, Westside Farm, Newton, Stocksfield, NE43 7TW, 01661 843 778

Orkney

WATERFRONT GALLERY, 128 Victoria Street, Stromness, KW16 3BU, 01856 850 644, www.waterfrontgallery.co.uk

In the shop: Orkney silver, pottery, knitwear and gifts. In the Back Room Local paintings, prints and designer crafts

PIER ARTS CENTRE, Victoria Street, Stromness, KW16 3AA, 01856 850 209, www.pierartscentre.com

Until December 24
Inspirational Birsay

THE GALLERY, Pierowall, Westray, KW17 2BZ, 01857 677 770

Ongoing: Contemporary art of Westray

YELLOWBIRD GALLERY, Chocolate Cottage, Birsay, KW17 2LT, 01856 721 360

Celebration of birds through drawings, paintings and carving by sculptor John Thompson and artist Lesley Murdoch

SHORELINES GALLERY & STUDIO, Maitland Place, Fins-town, Orkney Isles, KW17 2EQ, 01856 761142

Original gallery & shop selling prints & watercolours by Orkney artist Jane Glue

THE LOFT GALLERY, ST Margaret's Hope, KW17 2SL

NORTHLIGHT GALLERY, Graham Place, Stromness, KW16 3BY, 01856 851 194

Non-profit white wall exhibition space with a sink, sofa bed, shower and cooking facilities available for self-funded Artist Residencies

BILL MCARTHUR SEASCAPE ART, 3 Lettan, Sanday, KW17 2BP

Oxford

MODERN ART OXFORD, 30 Pembroke Street, OX1 1BP, 01865 722 733

ASHMOLEAN MUSEUM, Beaumont Street, OX1 2PH, 01865 278 000

Paisley

PAISLEY MUSEUM & ART GALLERIES, 60 High Street, Town Centre, PA1 2BA, 0141 889 3151, www.renfreshireleisure.com/paisleymuseum/art-galleries-and-ceramics-collection/

Check website for more details

PAISLEY ART CENTRE, New Street, PA1 1EZ, 0141 887 1010

Regular performances and events, call for listings

PAISLEY ART INSTITUTE, c/o Unit 33, Sir James Clark Building, Abbeymill Business Centre, Seedhill, PA1 1TJ, www.paisleyartinstitute.com, secretary@paisleyartinstitute.com

Holds its Annual Exhibition which attracts work from artist members and open entrants across the length and breadth of the UK

Peebles

TWEED ART, 1 Biggiesknowe, EH45 8HS, 01721 720 246, www.tweedart.co.uk, info@tweedart.co.uk

Framing studio artists and craftmakers gallery

Featured artists
Ken Ferguson, Joselth Maxwell Stuart.

TWEEDDALE MUSEUM AND GALLERY, Chambers Institution, High Street, EH45 8AG, 01721 724 820, www.liveborders.org.uk

Until December 24
Our Changing High Street. Photographs from the 1890s onwards

MOY MACKAY GALLERY, 17 Northgate, EH45 8RX, 01721 722116

Contemporary Art and Craft from Scotland

Until January 12 2022
Various artists. Mixed Mid-Winter.

PEEBLES CRAFT CENTRE, Newby Court, EH45 8AG, 01721 722875

Craft centre with 4 studios

TRAQUAIR HOUSE, Traquair House, Innerleithen, EH44 6PW, 01896 830 323

DAWYCK BOTANIC GARDEN, Stobo, EH45 9JU, 01721 760254

Until November 30
A Puzzle in the Garden.

SOLO GALLERY, 51 High Street, Innerleithen, EH44 6HD, 07495 710 687

A fresh new space for contemporary fine arts, ceramics, glass and jewellery

Perth

PERTH & KINROSS MUSEUMS & ART GALLERIES, 78 George Street, PH1 5LB, 01738 632 488, www.culturepk.org.uk/museums-galleries/, museum@culturepk.org.uk

Until February 6 2022
Romans: Edge of Empire.

FRAMES GALLERY, 10 Victoria Street, PH2 8LW, 01738 631 085, www.framesgallery.co.uk, info@framesgallery.co.uk

The

FERGUSON GALLERY,
Marshall Place, PH2 8NS, 01738
783 425

Until December 12
Perthshire Art Association work
by local artists

**L CHRISTIE CAMPBELL FINE
ART**, Rait Village Antique Centre,
Rait, PH2 7RT, 01821 670 379
Ongoing exhibition of 19th-21st
century oils, watercolours,
etchings and prints, jewellery by
Chris Lewis and Assassin

THE RUTHVEN GALLERY, 90
High Street, Auchterarder, PH3
1B3, 01764 664 233

Contemporary Art and Framing
**JARDINE GALLERY & WORK-
SHOP**, 45 New Row, PH1 5QA,
01738 621 836

PERTH THEATRE, 185 High
Street, PH1 5UW, 01738 621 031,
www.horsecross.co.uk, info@
horsecross.co.uk

Call for full listings
PERTH CONCERT HALL, Mill
Street, PH1 5HZ, 01738 621 031,
www.horsecross.co.uk, info@
horsecross.co.uk

**THE PERTSHIRE ART ASSO-
CIATION**, 5 Westchill, PH1 1DH,
01738 626307
See Fergus Gallery entry

Perthshire

**BIRNAM ARTS & CONFER-
ENCE CENTRE**, Station Road,
Birnham, Dunkeld, PH8 0DS,
01350 727 674, www.birnamarts.
com

Contact for details of re-opening
and to purchase e-tickets for
future planned events

Ongoing
Beatrice Potter's life, the creation
of Peter Rabbit and his pals.

GALLERIA LUTI, 16 Ancaster
Square, Callander, FK17 8BL,
01877 339577, www.gallerialuti.
co.uk, info@gallerialuti.co.uk

PERTSHIRE OPEN STUDIOS,
Kinross, KY13, www.pertshire-
openstudios.com

THE ATHOLL GALLERY, 6
Atholl Street, Dunkeld, PH8 0AR,
01350 728 855

FORTINGALL ART, Molteno
Hall, (8 miles W. of Aberfeldy
off B846), Aberfeldy, PH15 2LL,
01887 830 254

DUNBLANE MUSEUM, The
Cross, Dunblane, FK15 0AQ,
01786 825 691

**BLAIRGOWRIE AND RAT-
TRAY ARTS WEEK**, Ratray,
Blairgowrie, PH10 6AS, www.
itsbraw.scot, info@itsbraw.scot

THE DRILL HALL, The Cross,
Dunkeld, 01350 727 968

**GOLDFINCH GALLERY COM-
RIE**, Malloch Buildings, Drum-
mond Street, Comrie, PH6 2DS
Contemporary Arts Collec-
tive presenting or showcasing
the work of established and
emerging artists across a wide
range of media and catering for
all budgets

Pitlochry

**PITLOCHRY FESTIVAL THEA-
TRE**, Port-Na-Craig, PH16 5DR,
01796 484 626

**JOHN MUIR TRUST - WILD
SPACE**, Tower House, Station
Road, PH16 5AN, 01796 484975

Renfrewshire

**CRAFTS OF CALDER GAL-
LERY AND FRAMING**, 8 High
Street, Lochwinnoch, PA12 4DA,
01505 844 980

**KILBARCHAN EAST CHURCH
HALL**, Off Steeple Square,
Kilbarchan, PA10 2JD, www.
kilbarchaneastchurch.btck.co.uk

Ross-shire

**NORTH WEST HIGHLANDS
ART**, Brynport, Achintraid,
Strathcarron, IV54 8XB, 01520
733 227, www.nwhighlandsart.
co.uk, gillian@nwhighlandsart.
co.uk

North West Highlands Art
provides the ultimate in painting
courses at Brynport and Hosted
by Mark and Gillian Pattinson
SOLAS GALLERY, Flowerdale
Bay, Wester-Ross, Gairloch, IV21
2BD, 01445 712626
Paintings, prints & ceramics
by artists Rob Howard & Lyn
Beckett

**HIGHLAND MUSEUM OF
CHILDHOOD**, The Old Station,
Strathpeffer, IV14 9DH, 01997
421 031

GROOM HOUSE MUSEUM,
High Street, Rosemarkie, IV10
8UF, 01381 620 961

THE CROMARTY GALLERY,
20 Church Street, Cromarty, IV11
8XA, 01381 600 816

SUTOR CREEK RESTAURANT,
Bank Street, Cromarty, IV11 8YE
**INVERGORDON ARTS CEN-
TRE**, Town Hall, High Street,
Invergordon, IV18 0EL, 01349
868479

**GAIRLOCH HERITAGE MU-
SEUM**, Achtercairn, Gairloch,
IV21 2BP, 01445 712287

Selkirk

**SCOTTISH BORDERS COUN-
CIL (MUSEUM & GALLERY)**,
Municipal Buildings, High Street,
TD7 4JX, www.liveborders.org.
uk/museums and galleries,
chume@scotborders.gov.uk
BURNSIDE GALLERY, 48
Market place, TD4 4BL, www.
burnsidegallery.co.uk

November 17 - December 24
Various artists. Winter Exhibi-
tion.

Shetland

SHETLAND MUSEUM, Hay's
Dock, Lerwick, ZE1 0WP, 01595
695 057

Da Gadderie - new exhibition
space in the new Shetland
Museum

THE TAIT GALLERY, 11c
Union Street, Lerwick, ZE1 0ET,
01595 690 143

Jim Tait: Marine and landscape
artist

BONHOGA GALLERY, Weis-
dale Mill, Weisdale, ZE2 9LW,
01595 830 400

VAILA FINE ART, 61 Commer-
cial Street, Lerwick, ZE1 0US,
01595 6937374

THE PICKING SHED, Lower
Voe, Voe, ZE2 9PX, www.picking-
shed.co.uk, ckr@krshet.plus.com

Ongoing
Accommodation with Work
Room. The cottage is available
all year

St Andrews

**FIFE CONTEMPORARY ART
AND CRAFT (FCA&C)**, Town
Hall, Queen's Gardens, KY16
9AD, 01334 474 610

**FCA&C @ ST ANDREWS
MUSEUM**, Kinnesburn Park,
Doubledykes Road, KY16 9TA,
01334 659 380

YOUNGER HALL, University of
St Andrews, Music Centre, North
Street, KY16 9AJ, 01334 462226

FRASER GALLERY, 53 South
Street, KY16 9QR, 01334 479 647
**ST ANDREWS MUSEUM
GARDENS**, Kinburn Park,
Doubledykes Road, KY16 9DP,
01334 659380

Until December 31
Art-tastic. Colourful and
entertaining family-friendly
exhibition!

J & G INNES LTD, 107 South
Street, KY16 9QW, 01334 472
174, www.jg-innes.co.uk, enquir-
ies@jg-innes.co.uk

Stationery, Art Supplies, Books
& Gifts

November 20 - December 28
Pat Beveridge - Fife in th Frame

December 11 - 19
Winter exhibition by three
local girls

Stirling

**SMITH ART GALLERY &
MUSEUM**, Dumbarton Road,
FK8 2RQ, 01786 471 917, www.
smithartgalleryandmuseum.
co.uk, museum@smithartgal-
lery.co.uk

Until January 1 2022
Thomas Stuart Smith. The Man
Who Could Paint Anything -
The Legacy of Thomas Stuart
Smith.

**FRAMED IMAGES GAL-
LERY**, 31-33 Dumbarton Road,
FK8 2LQ, 01786 451 018, www.
framedimages.co.uk, framedim-
ages@btconnect.com

New and exciting art work.
Large selection of original art
and limited edition prints

GARTMORE HOUSE, Gartmore
House, Gartmore, FK8 3RS,
01877 382991, www.gartmore-
house.com, mail@gartmorehouse.
com

Tutor-led watercolour painting
holidays in the Loch Lomond
and Trossachs National Park,
Scotland. Suitable for all levels

**HOLY TRINITY CHURCH
HALL**, Albert Place, Dumbarton
Road, FK8 2QL

**THE FOTHERINGHAM GAL-
LERY**, 78 Henderson Street,
Bridge of Allan, FK9 4HS, 01786
832 861

THE GREEN GALLERY, The
Coachhouse, Ballamenoch, Buch-
lyvie, FK8 3NE, 01360 850 180

BUCHLYVIE POTTERY SHOP,
Main Street, Buchlyvie, (on
A811), FK8 3LP, 01360 850 405

SMITHY GALLERY, 74/76
Glasgow Road, Blane, G63
9HX, 01360 770 551

November 21 - January 23 2022
Various artists. Christmas
Exhibition.

Sunderland

NATIONAL GLASS CENTRE,
Liberty Way, SR6 0GL, 0191

ArtWork

Maxwell's cold – warming – blast

IF YOU ARE interested in how we can regain our faltering relationship with Europe may I thoroughly recommend MSP Angus Robertson's new book on Vienna. I am always suspicious of politicians, particularly the nationalist ones, but have been hugely impressed by his intellect, passion and application as displayed in this thoroughly researched book on Vienna's influential role in Europe and how it achieved it. A little bit ponderous in places but still both excellent and pertinent.

I have just spent time with my controversial and yet proven friend Pelham Olive on his nine thousand acre estate an hour north of Glasgow. Pelham is the kind of guy who will make a fortune one month, lose it the next and make another the month after. He is a delight.

His latest position is that he thinks that in certain cases it is more environmentally responsible to plant trees on land, thereby providing carbon capture, than subsidising sheep. A cynic would probably claim that he is at it for the carbon credits, but having known him for many years I have seen him altruistically pouring money into a number of medical projects for things like diabetes and tinnitus I am inclined to listen, particularly as I know that he is making arrangements to leave his estate, on which he has planted over two million trees to charity to act as an exemplar.

One of the reasons it's worth checking this kind of argument out is that I hear that the Pennyghael estate on the Ross of Mull, much the same size as Pelham's may shortly be bought by some stony eyed investors from Hong Kong with the intention of covering that glorious wilderness, once the home of the pop group Genesis, with trees.

This of course leads us to rewilding. I do wonder how much of the current fad of rewilding is based on altruism and how much on carbon credits. My impression is that Holyrood is slowly drifting away from land reform as the expenses of so many of their experiments rise exponentially and may be drawn to backing these new initiatives. One to

watch.

Finally may I give a shout out for the inter-denominational group the Iona Community who are making an interesting innovation in the climate change debate. For many years members of the discipline have had to reveal to each other what they are spending their time and money on and now they are adding the additional mandatory commitment that if you are a member you also have to plan and reveal what your carbon influence is. At a time when so much of the global warming debate is pusillanimous nonsense here are some folk who are actually doing something of substance. I salute them.

In much the same vein may I offer congratulations to the Govan based social group the Gal Gael for their seemingly daft project of announcing the formation of the Govan Free State.

When I first came across this group twenty five years ago they seemed like a bunch of daft hippies hanging around in a park to try to stop a motorway, but here they are today operating a magnificent workshop and home to over a hundred youngsters and those who have retired.

The new Govan free state is far more than a joke, it's yet another engaging and imaginative step for a self run group that delivers on time and to budget time after time and makes a genuine contribution to the reimagining of the world in these bizarre times. They are my favourite charity.



boo vake
artist-designed gifts & homewares

Boo Vake, 5 Watergate, Perth ph1 5tf
www.boovake.co.uk instagram|facebook|twitter

resipole
studios
FINE ART GALLERY

www.resipolestudios.co.uk
loch sunart | acharacle | argyll | ph36 4hx | 01967 431506

*Weekly, weekends
& 5 day courses,
Arrange a taster
or a longer course
in Arbroath, Angus*

Pottery Classes & Courses
www.franmarquis.com
franmarquis@btinternet.com

*Try hand-building
or throwing a pot
on the wheel!*

All Welcome!

THE WINTER SHOW
16 November - 31 December

**Country
Frames
Gallery**

LESLIE INSCH ABS2 6PA
01464 820389
www.countryframesgallery.co.uk

LESLIE MEMORIES
By **LORRAINE TAYLOR**

An exciting exhibition of original paintings and drawings inspired by a childhood in Leslie

Guide

515 5555

**NORTHERN GALLERY FOR
CONTEMPORARY ART**, National
Glass Centre, Liberty Way,
SR6 0GL, 0191 515 5555

Surrey

THE ART AGENCY, 118 High
Street, Esher, KT10 9QJ, 01372
466740

Sutherland

**TIMESPAN HERITAGE
CENTRE**, Dunrobin Street,
Helmsdale, KW8 6JX, 01431
821327, www.timespan.org.uk,
enquiries@timespan.org.uk
Until November 28

Global Village Art Factory.
Until August 31 2022

Lyth Arts Centre and Envi-
ronmental Research Institute
(University of Highlands &
Islands). The Land for Those
Who Work it.

**BALNAKEIL CRAFT VIL-
LAGE**, Balnakeil, Durness, IV27
4PT, 01971 511 277

Studios/galleries including:
pottery, paintings, printmaking,
wood-turning, clothes, baskets,
enamelling and jewellery

LOTTE GLOB CERAMICS, 105
Laid, Loch Eriboll, IV27 4UN,
01971 511 727

WILD TILES AND TEXTILES,
Cul Mor, Elphin, Near Ullapool,
IV27 4HH, 01854 666279

Courses in mosaic, embroidered
textiles, and creative writing

HIGHLAND STONEWARE,
Lochinver, IV27 4LP, 01571
844 376

For our complete range, and list
of stockists in your area, visit
our website

BUDDING GENIUS, 5 Church
Street, Dornoch, IV25 3LP, 01862
810 407

Tain

BROWN'S GALLERY, Castle
Brae, Ivy Lane, IV19 1AJ, 01862
893 884

**GLASSTORM CONTEMPO-
RARY GLASS STUDIO &
GALLERY**, 2 Chapel Street, IV19
1EL, 01862 893 189

Tyne & Wear

LAING ART GALLERY, Higham
Place, New Bridge Street, New-
castle upon Tyne, NE1 8AG, 0191
232 7734

Until December 21

Exhibitions Unpacked: Art Deco
by the Sea. Explores how the
Art Deco style transformed the
British seaside during the 1920s
and 30s

HATTON GALLERY, University
of Newcastle, Claremont Road,
Newcastle upon Tyne, NE1 7RU,
0191 222 6057

**SIDE PHOTOGRAPHIC GAL-
LERY**, 9 Side, Newcastle Upon
Tyne, NE1 3JE, 0191 232 2208

Time Tunnel: a whirlwind tour
through Newcastle's history;
also Science Factory

GREAT NORTH MUSEUM,
HANCOCK, Barras Bridge, Hay-
market, Newcastle upon Tyne,
NE2 4PT, 0191 222 7418

'Venom': deadly cast of world's
most poisonous creatures &
plants

DISCOVERY MUSEUM, Bland-
ford Square, Newcastle upon
Tyne, NE1 4JA, 0191 232 6789

Until March 27 2022

Making Waves: A Festival of
Sound.

**BALTIC - CENTRE FOR
CONTEMPORARY ART**, Centre
for Contemporary Art, Gateshead
Quays, South Shore Road, Gates-
head, NE8 3BA, 0191 478 1810

Until May 8 2022

Ad Minoliti. Biosfera Peluche/
Biosphere Plush. Critical
speculation of Biosphere 2, the
world's largest Earth science
experiment launched in 1984, in
the Arizona desert.

Until March 20 2022

Sutapa Biswas. Lumen. Include
a new film that maps a semi-
fictional narrative of migration

BLAGDON GALLERY, Milk-
hope Centre, Berwick Hill Road,
Seaton Burn, NE13 6DA, 01670
789 944

SHIPLEY ART GALLERY,
Prince Consort Road, Gateshead,
NE8 4JB, 0191 477 1495
Permanent

Designs for Life. Over 300
objects made across the world in
the last 2000 years

Ullapool

THE CEILIDH PLACE, 14 West
Argyle Street, IV26 2TY, 01854
612 103, www.theceilidhplace.
com, jean@theceilidhplace.com

Cafe/Bar/Shop. Programme of
Events and Exhibitions. Com-
fortable Accommodation

November 5 - March 31 2022
Sarah Garnett and Kim Rich-

ards. Wing, Water, West.

RHUEART GALLERY, RhueArt
Ltd, Rhue, IV26 2TJ, 01854
612460, www.rhueart.co.uk,
flick@rhueart.co.uk

THE HARBOUR GALLERY,
Argyll Street, IV26 2UB, 01854
612 282, www.theharbourgal-
lery.com

Original art, contemporary, retro
and vintage; framed/mounted
prints

HIGHLAND STONEWARE,
North Road, Wester Ross, IV26
2UN, 01571 844 376

AN TALLA SOLAIS, Ullapool
Visual Arts, Market Street, IV26
2XE, 01854 612 310
From November 2

Sarah Gittins, Chloe Lewis, Ellis
O'Connor, Meg Rodger and
Saula A/suk. Murrur: Artists
Reflect on Climate Change.

LAEL CRAFTS GALLERY, 3
Lael, IV23 2RS

Wigtownshire

STRANRAER MUSEUM, 55
George Street, Stranraer, DG9
7JP, 01776 705 088

WILLIAM NEAL PAINTINGS,
24 Ryan Gardens, Invernes-
san, Stranraer, DG9 8QP, 01776
706 953

Moonlight & Dusk themes of
Galloway in watermedia

HOPOE PRINTS, Seymour
House, 25 High Street, Port Wil-
liam, Newton Stewart, DG8 9SL,
01988 700 392

Range of original prints of birds
and landscape by Lisa Hooper

**WHITHORN VISITOR
CENTRE**, 45 - 47 George Street,
Whithorn, DG8 8NS, 01988
500 508

**KEVAN MCGINTY PAINT-
INGS**, The Studio, 107 George
Street, Whithorn, Newton Stew-
art, DG8 8PZ

Atmospheric landscapes from
the Scottish Highlands and
lowlands

LOGAN BOTANIC GARDEN,
Port Logan, Near Stranraer,
Dumfries & Galloway, DG9 9ND,
01776 860231

Yorkshire

IMPRESSIONS GALLERY,
Centenary Square, 29 Castlegate,
Bradford, BD1 1SD, 01904
654724

YORK ART GALLERY, Exhibi-
tion Square, York, YO1 7EW,
01904 687 687

Until February 13 2022
Thomas Gainsborough. Young
Gainsborough: Rediscovered
Landscape Drawings.

**NATIONAL SCIENCE AND
MEDIA MUSEUM**, Pictureville,
Queensbury, Bradford, BD1 1NQ,
01274 203 305

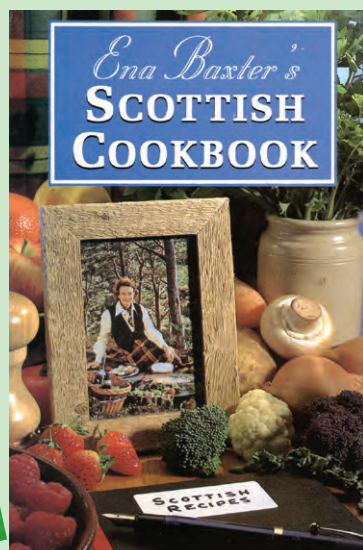
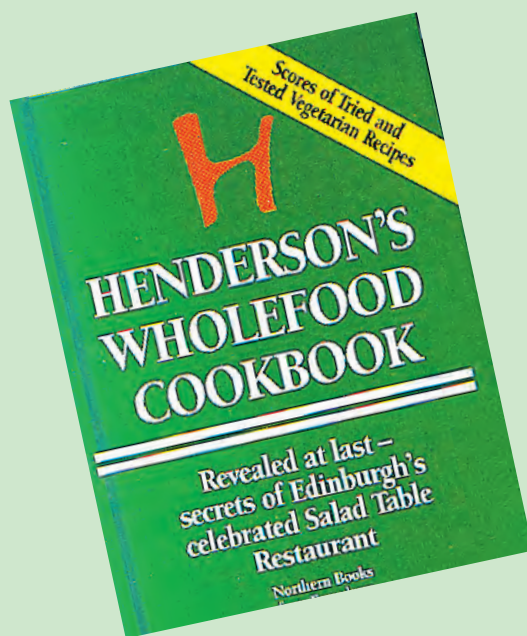
**YORKSHIRE SCULPTURE
PARK**, West Bretton, Wakefield,
WF4 4LG, 01924 832631

Until April 2022

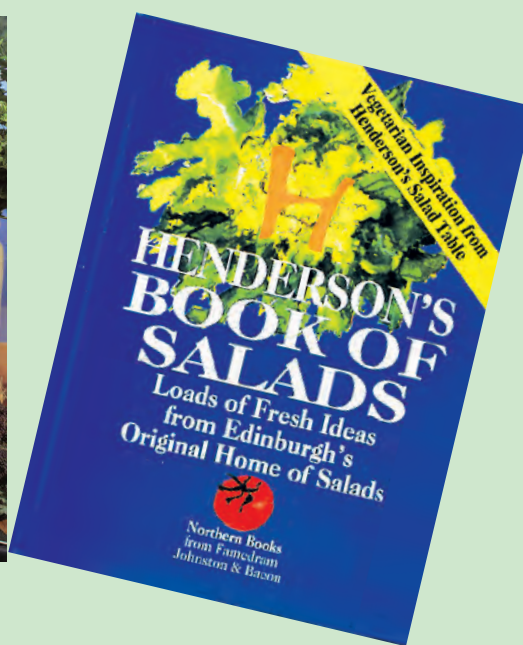
Damien Hirst.

CHRISTMAS BOOK OFFER THREE *CLASSIC* COOKBOOKS

RRP £16* – *for £10.00*
(UK post & packing free)



* £15.98



FAMEDRAM BUMPER COOKBOOK OFFER

PLEASE SEND BUMPER BUNDLE OF THREE COOKBOOKS TO THE ADDRESS BELOW

SEND TO.....ADDRESS.....

.....POSTAL CODE..... DATE.....

I enclose cheque (to Famedram Ltd)/PO or stamps value £.....

Send to Famedram Publishers Ltd, PO Box 3, Ellon, AB41 9EA

(TO ORDER ONLINE go to www.northernbooks.co.uk)