

The North\*s *Original* Free Arts Newspaper + [www.artwork.co.uk](http://www.artwork.co.uk)

# artWORK

Number 180 Pick up your own FREE copy and find out what's really happening in the arts September/October 2013



**Alchemical Forge, by Alan Gouk, from his one man show on at the Kinblethmont Gallery in Angus, until September 22. The artist will be giving a talk about his work in the gallery on September 11. More at [www.kinblethmont.co.uk](http://www.kinblethmont.co.uk).**

**Inside: A new way with willow in the South West**

CONTEMPORARY SCOTTISH LANDSCAPE GALLERY



the *Airt*

**LANDSCAPES OF THE MIND**  
Solo Exhibition by Kirstie Cohen - **Oct 6th - Nov 14th**  
[www.theairtgallery.co.uk](http://www.theairtgallery.co.uk) 01330 860333  
LEYLODGE, ABERDEENSHIRE, ( 5 mins from A96), AB51 OXY

2013 AUTUMN artWORK

**GALLERY HEINZEL**  
CONTEMPORARY ART

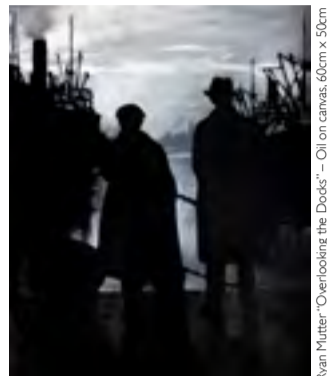
**NEOS Exhibition**

7th to 28th September

Visit us at the Scottish Home Show, STAND A3 at the AECC

27th to 29th September

Open:  
Monday to Saturday  
from 10am



Ryan Mutter "Overlooking the Docks" - Oil on canvas, 60cm x 50cm



24 Thistle Street, Aberdeen AB10 1XD  
T: 01224 625629 E: [info@galleryheinzell.com](mailto:info@galleryheinzell.com)  
W: [www.galleryheinzell.com](http://www.galleryheinzell.com)  
[www.facebook.com/galleryheinzell](http://www.facebook.com/galleryheinzell)



**Cyril Gerber Fine Art**

19th-21st Century British Drawings, Paintings & Sculpture



**Tom H. Shanks, RSW RGI PAI**

The Road to the Isles - New Scottish Watercolours  
31st August - 21st September 2013

178 West Regent Street, Glasgow, G2 4RL, 0141 221 3095  
[www.gerberfineart.co.uk](http://www.gerberfineart.co.uk)

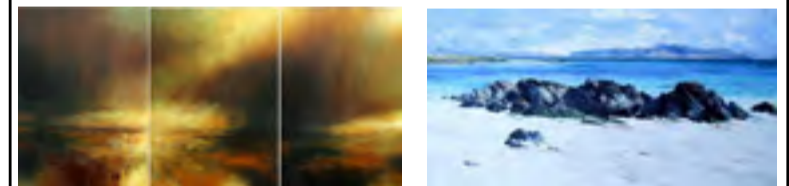
**ARTIST ROOMS**  
**Ian Hamilton Finlay**  
Nature over again after Poussin 1979-1980  
the park gallery - FALKIRK  
23 August - 16 November 2013  
Free Admission  
[www.falkirkcommunitytrust.org](http://www.falkirkcommunitytrust.org)

Falkirk Community Trust  
Callendar House,  
Callendar Park,  
Falkirk, FK11 1YR  
Mon-Sat 10am-5pm  
Last admission 4pm

ARTIST ROOMS  
ON TOUR WITH

ARTS COUNCIL ENGLAND  
ArtFund  
NATIONAL GALLERIES SCOTLAND  
TATE

**KIRSTIE COHEN ERNI UPTON NEW WORK**



7th - 25th September  
Open Daily

The exhibition displays two distinctly different approaches in oil to Scottish land and seascape painting. Kirstie Cohen - Turneresque, elemental and atmospheric. Erni Upton - inspired by the Scottish Colourists - painterly, colourful and light-filled. The natural beauty of Scotland is uniquely captured.



59 High Street, North Berwick, EH39 4HG 01620 890666 [info@greensandblues.co.uk](mailto:info@greensandblues.co.uk)

The North's *Original* Free Arts Newspaper + [www.artwork.co.uk](http://www.artwork.co.uk)

**artWORK**

...is freely available throughout Scotland and into the North of England in arts outlets, but because of growing demand copies are often snapped up soon after publication. To be sure of seeing each copy as it comes out take out a subscription.

£10.00 (6 issues)  £15.00 (12 issues)

NAME.....  
ADDRESS.....  
.....POSTCODE.....

PLEASE SEND ME REGULAR COPIES OF **artWORK** to this address...Send (with cheque/ PO/postage stamps) to: Famedram Publishers Ltd., PO Box 3, Ellon AB41 9EA Scotland

SOURCES FOR COURSES

**Pottery Courses in Angus**  
Weekends & Weekdays  
12th-13th Oct & 30th Nov - 1st Dec.

Hand build, throw pots on the wheel, *raku fire*, be creative by the sea in Arbroath with Fran.  
Ring 01241 439714 for info.  
[www.franmarquis.co.uk](http://www.franmarquis.co.uk)

WASPS FACTORY  
77 Hanson Street, Glasgow G31 2HF

**PULP**  
PAPER ARTS WORKSHOP

Tel: 0141 837 2842  
[elison@paperartsworkshop.co.uk](mailto:elison@paperartsworkshop.co.uk)  
[www.paperartsworkshop.co.uk](http://www.paperartsworkshop.co.uk)

STUDY FINE ART IN THE BEAUTIFUL OUTER HEBRIDES  
It's not too late to apply!

Full & part time places are still available 2013-14

**B.A. Fine Art Level One**  
Consideration of and response to 'place' underpins this unique and exciting course. Students are encouraged to engage widely with the island environment to explore and develop their individual creative identity.

**Short Courses**  
A programme of 2 & 3 day courses designed to introduce, engage or extend creative approaches to the visual arts will run throughout the year.

**Art & Gardens** 3rd & 4th October 2013  
**Exploring Objects** 21st & 22nd November 2013  
**Collaboration & Creative Practice** 13th & 14th January 2014  
**The map is not the terrain** 6th & 7th February  
**Art of the season / Spring** 24th & 25th April

For further details and applications please contact:  
e: [sophie.morrish@lewis.uhi.ac.uk](mailto:sophie.morrish@lewis.uhi.ac.uk) t: +44 (0)1876 500871  
[www.lewis.uhi.ac.uk/art](http://www.lewis.uhi.ac.uk/art)  
[www.facebook.com/FineArtOuterHebrides](http://www.facebook.com/FineArtOuterHebrides)

University of the Highlands and Islands  
Orkney Islands Council  
Shetland Islands Council

# Guide

## Aberdeen

**ABERDEEN ART GALLERY & MUSEUM, Schoolhill, AB10 1FQ, 01224 523 700, Fax: 01224 632 133**  
 Until October 19  
 SJ Pelpoe: The Scottish Colourist Series.  
 Until March 1 2014  
 The Lane of the Orient. Looks at how Far Eastern cultures have influenced collectors over the last 200 years  
**ABERDEEN MARITIME MUSEUM, Shiprow, AB11 5BY, 01224 337700, Fax: 01224 213066**  
 Until December 7  
 Aberdeen welcomes Edward and Alexandra.  
**Until January 4 2014**  
 Sue Jane Taylor: Beatrice Works  
**GRAYS SCHOOL OF ART, Robert Gordon University, Garthdee Road, AB10 7QB**  
**ABERDEEN ARTS CENTRE, 33 King Street, AB24 5AA, 01224 635 208**  
**September 18 - 21**  
 Spelling Bee: Musical  
**September 25 - 28**  
 Les Miserables School Edition.  
**October 10 & 11**  
 Shakespear Festival: Comedy  
**Until November 2 2014**  
 Ian Fleming - Master Printmaker  
**BEIVIDERE GALLERY, 221 Rosemont Place, AB25 2XS, 01224 627 164**  
**BRIDGE VIEW GALLERY, Petrofac building, 1 North Esplanade West, AB11 5QE, 01224 592 719**  
**GALLERY HEINZEL, 24 Thistle Street, AB10 1XD, 01224 625 629, www.galleryheinzel.com**  
 Contemporary Scottish art  
**September 7 - 28**  
 NEOS Exhibition.  
**HOLBURN GALLERY, 83 Holburn Street, AB10 6BQ, 01224 596 617**  
 Limited edition prints by many of Gallery Heinzel's artists  
**OPUS OF ABERDEEN, 45-49 Holburn Street, AB10 6BR, 01224 577 325**  
 Crafts, art and gifts also framing  
**PEACOCK VISUAL ARTS, 21 Castle Street, AB11 5BQ, 01224 639 539**  
**Until September 14**  
 Artists in Print: 21 Years of Collaboration  
**September 27 - November 9**  
 Stands Scotland Where She Did? Timothy Neat, A Celebration of Seventy: photographs, films, books, art and song  
**RENDEZVOUS GALLERY, 100 Forest Avenue, AB15 4TL, 01224 323 247**  
**September 28 - October 19**  
 John Byrne  
**JUNCTION ART AND GIFTS, 282 Holburn Street, AB10 6DD, 01224 593 653**  
 Art, ceramics, jewellery, handbags, cards, fashion accessories and much, much more  
**FORECOURT ART GROUP, Underpass of Aberdeen City Council Office, Broad Street, AB10 1FY**  
**PROVOST SKEN'S HOUSE, Guestrow, between Broad Street and Flourmill Lane), AB10 1AS, 01224 641 086, Fax: 01224 632 133**  
**THE TOLBOOTH MUSEUM, Castle Street, AB10 1EX, 01224 621 167, Fax: 01224 523 666**  
 Until October 5  
 Historic Food and Cookery in Aberdeen.  
**ROBERT GORDON UNIVERSITY, Faculty of Health Building, Garthdee Road, AB10 7QQ**  
**CLAREMONT STUDIO, 66 Claremont Street, AB10 6QJ, 01224 596 999, www.claremontgallery.co.uk**  
**THE NICOLE PORTER GALLERY, 88 King Street, AB24 5BA, 01224 566 477**  
**MARTIN R. NELSON, Cowden Studio, Cowden Farm, Drumlithie, 01569 740240, www.martinnelson.com, martin@martinnelson.com**  
**Aberdeenshire**  
**BRAEMAR GALLERY, Mar Road, Braemar, AB35 5YL, 01339 741 681, www.braemargallery.co.uk, info@braemargallery.co.uk**  
 Oil paintings, watercolours, etchings, engravings, sculpture, jewellery and cards  
**THE BUTTERWORTH GALLERY, Ballolie, Near Aboyne, AB34 5DP, 01339 886 104**  
 Exhibition of paintings and prints by Howard Butterworth and daughter Mary  
**LARKS GALLERY, 10 Braemar Road, Ballater, AB35 5RL, 01339 755 888**  
 Paintings, sculpture, ceramics, glass, textiles, jewellery and photography  
**VICTORIA HALL, Station Square, Ballater, AB35 5QB, 01339 755307**  
**CRANACH COFFEE SHOP & GALLERY, Cambus O'May, Bal-**

later, AB35 5SD, 01339 755 126  
 Food, coffee and Scottish art, craft and design  
**THE CREEL INN, Catterline, Stonehaven, AB39 2UL, 01569 750 254**  
**LANG BYRE GALLERY, Woodend Barn Arts Centre, Burn O'Bennie, Banchory, AB31 5QA, 01330 825 431, www.woodendbarn.co.uk, mail@woodendbarn.co.uk**  
 Call for more details  
**Until September 30**  
 Oil Painting with Neal Macdonald.  
**THE LOST GALLERY, Adalchue, Strathdon, AB36 8UJ, 01975 651 287, Fax: 01975 651 287**  
**MILTON ART GALLERY, Milton of Crathes, Nr Banchory, AB31 5QH, 01330 844 664, www.miltonart.com**  
**September 14 - 22**  
 Liza Taylor and Lorna Crawford: NEOS  
**September 7 - October 26**  
 Dancing Light: Themed show from gallery artists  
**November 2 - February 23 2014**  
 Winter Exhibition: Mixed Winter show from gallery artists  
**STARFISH STUDIO, 3 Anchor Lane, Johnshaven, DD10 0EN, 01561 360 118**  
 Paintings by Kate MacKenzie  
**THE STUDIO, Braeside Croft, Mintlaw, Peterhead, AB42 4HH, 01771 62999**  
 Celtic and oriental hand-made rugs, kilims & textiles  
**SCOTTISH SCULPTURE WORKSHOP, 1 Main Street, Lumsden, Huntly, AB54 4JN, 01464 861372, Fax: 01464 861 550**  
**SYLLAVETHY GALLERY, Syllavethy, Montgarrig, Alford, AB33 8AQ, 01975 562 273**  
**TOLQUHON GALLERY, Tolquhon, Tarves, Ellon, AB41 7LP, 01546 442 343, www.tolquhon-gallery.co.uk**  
**September 8 - October 8**  
 A Brush with Nature  
**THE MILL OF UDNY, The Mill, Udy, Pitmedden, AB41 7RQ, 01651 842 429**  
**THE ART & FRAMING SHOP, 15 Market Street, Ellon, AB41 9JD, 01358 729931**  
**TOUCHED BY SCOTLAND, Rye-hill, Oyne, AB52 6QS, 01464 851 489, www.touchedbyscotland.com, info@touchedbyscotland.com**  
**INVERRIE MUSIC, Benview Cottage, Chapel of Garioch, Inverurie, AB51 5HE, 01651 882274**  
 Check website for details  
**THE MUSEUM OF SCOTTISH LIGHTHOUSES, Cairnaird Head, Fraserburgh, AB43 9DU, 01346 511 022**  
 Purpose-built museum with multi-screen technology  
**PETERHEAD MARITIME HERITAGE, South Road, Peterhead, AB42 2UP, 01779 473000**  
 Experience Peterhead's maritime life past and present  
**ORB'S BOOKSHOP, 3a Deveron Street, Huntly, AB54 8BY, 01466 793 765**  
 Raoul Middleman: An American Painter in the North East  
**RIVERSIDE GALLERY, The Riverside Arthouse, Ann Street, Stonehaven, AB39 2DA, 01569 763 931**  
**NORTH EAST OPEN STUDIOS, NEOS Coordinator, 107 Sebbie Drive, Inverurie, AB51 3YB, 01467 670 122**  
 A non-profit organisation promoting Arts, Crafts and galleries in the North East of Scotland  
**September 7 - 29**  
 NEOS 2013.  
**ALBERTINO COSTA SCULPTURES, Camp Hill School, Northdeside Road, Bieldside, AB15 9EP, 07917 482351, www.greenglassgallery.com**  
 Marbles and others  
**GALLERY AT FIFTY FIVE, 55 Allardice Street, Stonehaven, AB39 2AB, 01569 785606, www.galleryatfiftyfive.co.uk**  
**GALLERY, 28 Garioch Shopping Centre, Constitution Street, Inverurie, AB51 4UY**  
**THE AIRT GALLERY, South Ley Lodge, Farmhouse, Ley Lodge, Kintore, AB51 0XX, 01330 860 333, www.theairtgallery.co.uk, enquiries@theairtgallery.co.uk**  
**October 6 - November 14**  
 Kirstie Cohen: Landscapes of the Mind: Solo exhibition  
**HADDO HOUSE, Methlick, Ellon, AB41 7EQ, www.hhcos.org.uk**  
 October 5 - 13  
 Haddo Arts Festival  
**COWDEN STUDIO, Cowden Farm, Drumlithie, AB39 3YN, 01569 740039, www.cowdenstudio.com, info@cowdenstudio.com**  
**PITMEDDEN GARDEN, Ellon,**

# In search of more 'curious traditional facts' about Hogg

DEEP in the heart of the rural Scottish Borders lies the Ettrick Valley, an area with little internet or mobile connection. Over the summer the old primary school at the top of the valley has been playing host to the James Hogg Exhibition in its hall.

This seemed completely empty until the poet Robert Wilson suddenly appeared from the small office next to the front door with the words "I'm just finishing a poem."

Looking casual in a T-shirt, he began to show me around. Although no visitors were present, Wilson said there had been a trickle every day. He pointed out that six people a day here is equivalent to a footfall of something like 600 in Edinburgh.

Hogg had lived a few metres from the school between 1770 and 1835, and was a major literary figure and farmer. Wilson feels he ought to be commemorated as part of Scots culture and history and is building on this aspect of the area.

As we chatted about Hogg - his unconventional love life, his debt problems and his extraordinary mask - visitors started appearing. As they cornered Wilson, I slipped away to examine the exhibits.

These included the sinister-looking mask moulded from his face, a spectacle case, a replica of his desk and dog, a first edition novel, and a beautiful sculpture based on a Hogg poem. The exhibition impressed Marlene Wyley from London, who commented that it was "very well curated."

As the exhibition closed for the day, Wilson and I sat on the steps outside while the last of the visitors drifted away. It transpired that Wilson knows little about sheep but a lot about Hogg.

He had been totally immersed in Hogg's writings during the first two weeks of the six week residency, which was due to last until the end of September. Funding, he told me, came from The Big Lottery Fund, the Leader programme and the Buccleuch Estate. Wilson is receiving a small salary.

Hogg was, said Wilson, the classic 'lad o' pairts.'

"He was a kind of self-educated guy who had to struggle through poverty and he had an innate talent to do that."

For that, and for having written in Scots, Wilson felt some identification with him.

Wilson discussed the importance of Hogg's legacy and his own role fitting into

this, he said: "The human condition doesn't change much. The same challenges face people as they did 200 years ago. "It's a struggle for the local people to survive economically and it's one of the challenges of isolation here. The valley depopulated because of people moving away for jobs, and that's the same today as in Hogg's time."

This depopulation occurred he said, when local sheep farms were taken over by trees, by contractors and big companies, and the commercially run forestry ventures sucked the life out of the community: "They didn't bring anything in, they were just interested in taking out."

Influenced by his experiences, Wilson's poems so far have been based on wildlife, topography and place names. He also aims to incorporate locals' stories and their aspirations for the valley in a meaningful way.

Wardlaw Jackson, 58, a farmer in the Cross Keys pub farther down the valley, also talked about the forestry, and said that incomers to the area tended to be retirees. He said that the farmers, himself included, had capitalised on the situation by selling land to the contractors at something like double its market value.

The contractors, he said, had promised jobs to the locals, but these had failed to materialise. Wilson admits to knowing nothing about sheep farming: "I'm not a shepherd, but I can appreciate the tough life that they have." In fact, many farmers left the area as result of the difficult life.

The aim to revitalise Ettrick could result in drastic changes to its character and landscape. The danger is that this



At his desk, with crook, dog and bunnet, the poet Robert Wilson spent the summer in the Borders honouring the memory of the Ettrick Shepherd

might cause loss of the uniqueness which so influences Wilson's poetry and the very solitude which helps concentrate his mind in the writing of it.

**SAM KHAN-MACINTYRE**

**Clience Studio**  
*Angela Lawrence*  
 Gallery of affordable Paintings, Prints, Commissions & Art Gifts  
 At the Clock tower, 212 King Street  
**Castle Douglas**  
  
 Open Mon - Sat 10 - 5, core hours All year  
 angela@cliencestudio.co.uk / 01556 504318  
 www.clicencestudio.co.uk

**Catriona Mann RSW**  
**Jennifer Pettigrew**  
  
 NOVEMBER EXHIBITION  
 2nd 3rd and 4th November 10.00 - 5.00pm  
 Dundas Street Gallery, 6a Dundas Street, Edinburgh EH3 6HZ

**STUDIO BARN**  
**ARGYLL**  
  
 ORIGINAL ART, CRAFTS & GIFTS  
 OPEN DAILY FROM 10am  
 Leac Na Ban, Tayvallich, Lochgilphead, Argyll PA31 8PF  
 01546 870310  
 www.studiobarnargyll.co.uk

**KATY SPONG : A SENSE OF PLACE**  
 New Paintings and Original Prints  
**5 - 26 October, 2013**  
 See our website for further details  
 www.castlegallery.co.uk  
  
 Gallearraidh a' Chaisteil  
 43 Sraid a' Chaisteil  
 Inbhir Nis  
 IV2 3DU  
 01463 729512  
 www.castlegallery.co.uk

**Braemar Gallery**  
 www.braemargallery.co.uk  
 FINE ART : PRINTS : CERAMICS  
 JEWELLERY : ARTISTS MATERIALS  
 013397 41681

# Editorial Comment

ArtWork PO Box 3 AB41 9EA :: artwork@famedram.com

## Where will the feet fall next?

ON ANOTHER page in this issue we show the current scene of devastation on Dundee's waterfront as the old, ill-thought-out order prepares to make way (one day) for the brand spanking new.

The intention is certainly an admirable one and corrects an appalling planning failure which allowed the city to turn its back on its principal - and celebrated - main asset, McGonagall's 'silvery' Tay.

Having wisely retreated back from its precarious position perched over the poet's favourite river, the centrepiece of this ambitious re-vamp - Dundee's own V & A - is, we are assured, on track to one day produce what everyone hopes will be the city's Bilbao moment.

Yet whether there will be enough feet to 'fall' through the V & A's doors as well as those of Dundee Contemporary Arts and the McManus might be open to question.

Certainly there are some worrying examples farther north of ambitious dreams that have turned into costly disasters. Aberdeenshire's Archeolink, the semi-submerged Telly Tubby-like visitor park at Oyne (of all places), has turned out to be a very costly drain on the county's resources.

A case of the wrong idea in

# What about J M Barrie's Scot on the make, then?

artWORK 180 September/October 2013 Page 5

EARLIER this year, Vicky Featherstone, founding artistic director of the National Theatre of Scotland, left for the south. However, under her successor, Laurie Sansom, NTS's reputation hasn't dimmed: during this year's Edinburgh Festival, no fewer than six of its productions were nominated for awards.

Although Sansom plans larger scale touring shows than before and promises main stage classical productions, he has kept at its heart NTS's hallmark of championing experimental work and unconventional versions of the classics, played in unconventional venues.

NTS's new artistic director recognizes the need to embrace the independence debate. So, early next year the company will tour "Rantin" with The Arches and Kieran Hurley

Up and down the country, the show will encourage discussion on the independence debate and prepare the public for a follow-up NTS production of sketches, songs and rants called "The Great Don't Know Show," navigated by two well-known Scottish theatre men, the playwright David Greig and the veteran actor-musician, David MacLennan, who co-founded the 7:84 Company.

Cast and audience will have a chance to consider national identity as well as the independence debate itself. A National Theatre is the most suitable and able of arts institutions to stage a public debate on Scottish identity and independence. Perhaps another discussion should be encouraged on how much art (be it theatre,

literature or the visual arts) should be identified with nationality.

Some time before Vicky Featherstone left to take up the reins at London's Royal Court theatre, the old guard of the Scottish literary establishment criticized her "programme choice," claiming she was neglecting the Scottish canon (which was hardly surprising when Scottish Calvinism forbade any theatre for over 300 years).

As the inhabitants of this country prepare to vote on whether to be or not to be part of the UK, it conjures up a sense of déjà vu. In the late 19th century, Norway was poised to become an independent country.

However, its national playwright, Henrik Ibsen, (although influenced by nationalism in his early life), wrote his main body of work about domestic issues, age-old moral problems and timeless, universal concerns. Likewise, Ibsen's compatriot, Edvard Munch, painted scenes of a profoundly personal and visceral nature.

Did these geniuses whinge about the Danes or Swedes getting top jobs in the arts and dismiss them as 'settlers' and 'colonists'?

Great theatre transcends party and national political issues and is too big to be purely interested in race or gender. With the run-up to the independence referendum, some hateful sentiments are being expressed but as many of us are aware, anglophobia isn't new.

When Vicky Featherstone expressed the sad fact that she felt 'paralysed' by the criticism levelled at her because of her Englishness -

or lack of Scottishness - it begs the question why she was subjected to such an attack. Was it an excuse for her critics' artistic mediocrity? Would a truly successful, dedicated artist care about an artistic director's nationality or bother if he or she was oppressed or discriminated against?

Max Beerbohm, the early twentieth century English essayist, claimed that the true artist was always "in too much of a hurry" to worry about anything other than completing his art. It is, surely, irrelevant if the artistic director of the NTS comes from south or north of the Scottish/English border.

Outsiders to a community often enrich and throw valuable light on to it. Take the Taiwan-born Ang Lee whose direction of the 1995 film version of Jane Austen's "Sense and Sensibility" brought an unexpected breadth to the early 19th English author's novel.


There's screen-writer and director, Richard Curtis, born in New Zealand of Australian parents, whose minute observation of a narrow sector of English society, is exquisitely depicted. And it works both ways; when the occasion presents itself, Scots will do a bunk south or across the pond. As the Scots playwright, J.M. Barrie, wryly expressed, "There are few more impressive sights in the world than a Scotsman on the make."

So, if the last Westminster government consisted of a bevy of Scots on the front benches, why shouldn't one or two of our arts institutions be run by the English?

**George Wyllie: "My Words"**  
 £4.95 post free from www.northernbooks.co.uk

**RSA OPEN EXHIBITION CALL TO ARTISTS**

**New regulations!**  
 Entry Forms & Payment to be sent 2 weeks in advance of Hand-in days and no later than Friday 25 October 2013. Hand-in days - 8 & 9 November. Selected works will be published on RSA website by Thursday 14 November.

For further information please check the exhibitions page of our website:  
 www.royal.scottishacademy.org  


**Just Art**  
 Fine and Applied Arts  
 64 High Street, Fochabers, IV32 7DH  
 01343 820500 - mail@justart.co.uk

And now for something completely different parts 1 & 2  
 01/09 to 12/10 & 20/10 to 16/11  
 Tuesday-Saturday 10-1 & 2-5 and by appointment.  
 The website is always open at  
 www.justart.co.uk

**"The Mill Fayre at Poldrate"**  
**NOVEMBER 2013**  
**Saturday 2nd 11am-5pm**  
**Sunday 3rd 10am-4pm**  
**"Craft Fayre Extraordinaire"**  
 Three floors of Poldrate Granary, Ground floor Mill and Bridge Centre Haddington, East Lothian EH41 4DA  
**Crafts, Demonstrations, Exhibitions, Tearoom (with music), Pipe Band, Photo Quiz, Family day out**  
 (shuttle bus to and from Haddington, thanks to Lennoxlove Book Festival)  
 SC03798

# The

Ellon, AB41 7PD, 01651 842352  
**May to September**  
John Maine. Stone sculptures.  
Also art by various artists. At the  
Stables gallery

**COUNTRY FRAMES GALLERY,**  
Leslie, Insh, AB52 6PA, 01464  
820389, www.countryframes.co.uk

**Aberfeldy**  
ABERFELDY GALLERY, 9 Ken-  
more Street, PH15 2BL, 01887 829  
129, www.aberfeldygallery.co.uk

**September 7 - October 26**  
Deborah and the late Douglas  
Phillips. Family Connections.

**THE WATERMILL, Mill Street,**  
PH15 2BG, 01887 822 896  
Art Gallery, Bookshop, Coffee &  
Music Shop

**Until October 2**  
Winter in Glen Lyon - Photogra-  
phy by Jamie Grant

**THE TEMPLE GALLERY, 20**  
Dunkeld Street, PH15 2AA, 01887  
822 997

**KELTNEYBURN SMITHY AND**  
**GALLERY, The Botly Showroom,**  
Keltneyburn Smithy, Keltneyburn,  
PH15 2LF, 01887 830 267

Sculptures created by mother  
and daughter team. Morag and  
Leather Cumming

**THE BOLTACHAN GALLERY,**  
Boltachan by Aberfeldy, PH15 2LB,  
01887 820 057

Contemporary and traditional  
painting, sculpture, ceramics and  
jewellery

**Aberlour**  
STILL LIFE STUDIO, High Street,  
AB38 9NX, 01340 871 457

**Alloa**  
THE GALLERY, Gordon McFar-  
lane, Watchmaker, 41 Mill Street,  
FK10 1DW, 01259 723 003

Work from Ochil Craft As-  
sociation

**RESONATE ARTS HOUSE, Units**  
**A3, North Castle Street, FK10 1EU,**  
01259 928 014

**Angus**  
THE MEFAN, 20 West High  
Street, Forfar, DD8 1BB, 01307 476  
482, www.angus.gov.uk/history/  
museums/mefan/default.htm, the.  
mefan@angus.gov.uk

**November 30 - January 3 2014**  
Winter Exhibition. Call for en-  
tries - open to all artists resident  
in Scotland

**THE CANVAS ART GALLERY, 81**  
**East High Street, Forfar, DD8 2EQ,**  
01307 465 715

Originals, prints, quality picture  
framing. Unusual giftware and  
jewellery

**KINBLETHMONT GALLERY, Ar-**  
**broath, DD11 4RW, 01241 830 756,**  
www.kinblethmontgallery.co.uk,  
kinblethmont@btinternet.com

**September 7 - 22**  
Alan Gouk. Original Perspec-  
tives.

**October 15 - 31**  
James Morrison and Coline Rus-  
sell. The Somme

**OATHLAW POTTERY & GAL-**  
**LERY, Oathlaw, Forfar, DD8 3PQ,**  
01307 850 272

**CRAFTS OF ANGUS SHOWCASE**  
**AND SHOP, The Old Stable Block,**  
House of Dun, Montrose, DD10  
9LQ, 01674 810379, www.crafts-  
of-angus.co.uk

Contemporary and Designer.  
Handcrafted Goods. House of  
Dun By Montrose

**SPRINGFIELD CREATIVE ARTS,**  
Dr. Fran Marquis, 4 Springfield  
Terrace, Arbroath, DD1 1EJ,  
01241 439 714, www.franmarquis.co.uk,  
info@franmarquis.co.uk

**Monthly throughout the year**  
Ceramics Weekends in Arbroath.

**October 12 & 13 (and Nov**  
**30 - Dec 1)**  
Pottery Weekends & Weekdays.

**ARBROATH LIBRARY GALLERY,**  
Hill Terrace, Arbroath, DD11  
1AH, 01241 872 248

**MONTROSE MUSEUM, Panmure**  
**Place, Montrose, DD10 8HF, 01674**  
**673232**

**HOSPITALFIELD, Centre for Art**  
**& Culture, Arbroath, DD11 2NH,**  
01241 872 333, www.hospitalfield.org.uk,  
info@hospitalfield.org.uk

**September 13 - 15**  
Open Weekends. Events to coin-  
cide with Angus Heritage Week

**ANNIE GILRUTH MEMORIAL**  
**HALL, Auchmithie, by Arbroath,**  
DD11 5SY, 01241 431 511

**MONTROSE LIBRARY EXHIBI-**  
**TION ROOM, DD11 4HS, 01674**  
**673256**

**Argyll**  
THE ARCHWAY, 7 Union Street,  
Lochgilphead, PA31 8JS, 01546  
606 894

**Studios**  
STUDIO BARN ARGYLL, Leac  
Na Ban, Tayvallich, Lochgilphead,  
PA31 8PJ, 01546 870 310, www.  
studiobarnargyll.co.uk, hamilton-  
argyll@btinternet.com

Seasonal exhibition of original  
art

**HELENSBURGH LIBRARY, West**  
**King Street, Helensburgh, G84**  
**8EB, 01436 658 833, Fax: 01436**  
**679 567**

**FYNE STUDIOS - THE HIDDEN**  
**GALLERY, Newton, Strachur, (off**  
**the A886), PA27 8DB, 01369 860**  
**379, www.fyne-studios.com**

Gallery of two Scottish artists  
Don McNeill & Jean Bell

**BLAIRMORE GALLERY & COFFEE**  
**SHOP, Pierhead Blairmore,**  
Dunoon, PA23 8JT, 01369 840 253,  
www.blairmoregallery.com

**Until October 5**  
Keith Salmon

**JUNO DESIGN GALLERY, 159**  
**Argyll Street, Dunoon, PA23 7DD,**  
01369 707 767, www.junoagency.com

**Until September 27**  
Stuart Hurd and Anthony Barber.  
Late Summer Exhibition. New  
works

**September 28 - November 15**  
Malcolm Warrilow & Morag  
Lloyds. Autumn Exhibition.

**RESIPOLE STUDIOS, Achardale,**  
**PH36 4HX, 01967 431 506, www.**  
**resipolestudios.co.uk**

New artspace with studios, gal-  
ery and framing service

**Until September 15**  
Helen Fryer and Jim Wright  
Celebrating the winners of the  
West coast of Scotland

**September 20 - October 13**  
Jan Gardner. Stories of Stillness.  
Solo exhibition

**THE STABLE GALLERY, Church**  
**Square, Inveraray, PA32 8TY,**  
01919 302 800

Paintings, reproductions, greet-  
ings cards, exclusive post cards

**TIGHNABRUACH GALLERY,**  
**Seaside House, Tighnabruach,**  
**PA21 2DR, 01700 811 681**

Original art, sculpture, glass,  
jewellery, poetry

**IONA HERITAGE CENTRE, Isle**  
**of Iona, PA76 6SL, 01681 700 576**

Paintings, reproductions, greet-  
ings cards, exclusive post cards

**IONA ABBEY, Abbey & MacEod**  
**Centres, Isle of Iona, PA76 6SN,**  
**01681 700 404, Fax: 01681 700 460**

Inspirational setting for services.  
Christian community

**IONA GALLERY AND POTTERY,**  
**Isle of Iona, PA76 6SW, 01681 700**  
**439, www.ionagallery.com, enq-**  
**uiries@ionagallery.com**

**ORSAY, 2 Stevenson Street, Oban,**  
**PA34 5NB, 01631 569 988**

Painting, ceramics, glass metal,  
textiles, wood lights, cards

**INVERBEG GALLERIES, Inver-**  
**beg, Argyll & Bute, Loch Lomond,**  
**G83 8PD, 01423 860 277**

**COWAL OPEN STUDIOS, PA23**  
**8QU**

**September 27 - 30**  
COWAL Open Studios. Visit the  
beautiful cowl peninsula and  
discover the artists working here

**CARDROSS CHURCH HALLS,**  
**Station Road, Cardross, G82 5NL,**  
**October 12 & 13**

Cardross Arts Group. Paintings  
and crafts. Obtain and view  
outstanding original paintings  
and crafts from one village.

**MACLAURIN ART GALLERY,**  
**Rozelle Estate, Monument Road,**  
**KA7 4NQ, 01292 443 708, www.**  
**south-ayrshire.gov.uk/galleries/  
maclaurin/**

**Until September 29**  
Imagined Skies. The Last  
Muirals of Tom Gillilan

**October 14 - November 10**  
Save the Children 2013. Ayr-  
shire Art Exhibition and Sale

**ROZELLE HOUSE GALLERIES,**  
**Rozelle Park, Monument Road,**  
**KA7 4NQ, 01292 443 708, www.**  
**south-ayrshire.gov.uk/galleries/  
rozellehouse**

**Until October 13**  
Professor Dugald Cameron. A  
Personal Passion.

**October 19 - January 19 2014**  
Small World. Collections in  
Aminature

**COCKBURN GALLERY, 41 High**  
**Street, Maybole, KA19 7AB, 01655**  
**884 067**

**September & October**  
Landscape, Seascapes studies  
exhibition.

**THE FRAMEWORK GALLERY,**  
**83 Portland Street, Troon, KA10**  
**6QU, 01292 316 144**

Continuous mix of original  
paintings and printwork by a  
variety of artists

**GLENBUCK ARTS, Glenbuck**  
**Cottage, Glenbuck, East Ayrshire,**  
**01655 894**

Open Wednesdays. Events to  
coincide with Angus Heritage  
Week

**ANNIE GILRUTH MEMORIAL**  
**HALL, Auchmithie, by Arbroath,**  
**DD11 5SY, 01241 431 511**

**MONTROSE LIBRARY EXHIBI-**  
**TION ROOM, DD11 4HS, 01674**  
**673256**

**Argyll**  
THE ARCHWAY, 7 Union Street,  
Lochgilphead, PA31 8JS, 01546  
606 894

**Studios**  
STUDIO BARN ARGYLL, Leac  
Na Ban, Tayvallich, Lochgilphead,  
PA31 8PJ, 01546 870 310, www.  
studiobarnargyll.co.uk, hamilton-  
argyll@btinternet.com

Seasonal exhibition of original  
art

**HELENSBURGH LIBRARY, West**  
**King Street, Helensburgh, G84**  
**8EB, 01436 658 833, Fax: 01436**  
**679 567**

**FYNE STUDIOS - THE HIDDEN**  
**GALLERY, Newton, Strachur, (off**  
**the A886), PA27 8DB, 01369 860**  
**379, www.fyne-studios.com**

Gallery of two Scottish artists  
Don McNeill & Jean Bell

**BLAIRMORE GALLERY & COFFEE**  
**SHOP, Pierhead Blairmore,**  
Dunoon, PA23 8JT, 01369 840 253,  
www.blairmoregallery.com

**Until October 5**  
Keith Salmon

**JUNO DESIGN GALLERY, 159**  
**Argyll Street, Dunoon, PA23 7DD,**  
01369 707 767, www.junoagency.com

**Until September 27**  
Stuart Hurd and Anthony Barber.  
Late Summer Exhibition. New  
works

**September 28 - November 15**  
Malcolm Warrilow & Morag  
Lloyds. Autumn Exhibition.

**RESIPOLE STUDIOS, Achardale,**  
**PH36 4HX, 01967 431 506, www.**  
**resipolestudios.co.uk**

New artspace with studios, gal-  
ery and framing service

**Until September 15**  
Helen Fryer and Jim Wright  
Celebrating the winners of the  
West coast of Scotland

**September 20 - October 13**  
Jan Gardner. Stories of Stillness.  
Solo exhibition

**THE STABLE GALLERY, Church**  
**Square, Inveraray, PA32 8TY,**  
01919 302 800

Paintings, reproductions, greet-  
ings cards, exclusive post cards

**TIGHNABRUACH GALLERY,**  
**Seaside House, Tighnabruach,**  
**PA21 2DR, 01700 811 681**

Original art, sculpture, glass,  
jewellery, poetry

**IONA HERITAGE CENTRE, Isle**  
**of Iona, PA76 6SL, 01681 700 576**

Paintings, reproductions, greet-  
ings cards, exclusive post cards

**IONA ABBEY, Abbey & MacEod**  
**Centres, Isle of Iona, PA76 6SN,**  
**01681 700 404, Fax: 01681 700 460**

Inspirational setting for services.  
Christian community

**IONA GALLERY AND POTTERY,**  
**Isle of Iona, PA76 6SW, 01681 700**  
**439, www.ionagallery.com, enq-**  
**uiries@ionagallery.com**

**ORSAY, 2 Stevenson Street, Oban,**  
**PA34 5NB, 01631 569 988**

Painting, ceramics, glass metal,  
textiles, wood lights, cards

**INVERBEG GALLERIES, Inver-**  
**beg, Argyll & Bute, Loch Lomond,**  
**G83 8PD, 01423 860 277**

**COWAL OPEN STUDIOS, PA23**  
**8QU**

**September 27 - 30**  
COWAL Open Studios. Visit the  
beautiful cowl peninsula and  
discover the artists working here

**CARDROSS CHURCH HALLS,**  
**Station Road, Cardross, G82 5NL,**  
**October 12 & 13**

Cardross Arts Group. Paintings  
and crafts. Obtain and view  
outstanding original paintings  
and crafts from one village.

**MACLAURIN ART GALLERY,**  
**Rozelle Estate, Monument Road,**  
**KA7 4NQ, 01292 443 708, www.**  
**south-ayrshire.gov.uk/galleries/  
maclaurin/**

**Until September 29**  
Imagined Skies. The Last  
Muirals of Tom Gillilan

**October 14 - November 10**  
Save the Children 2013. Ayr-  
shire Art Exhibition and Sale

**ROZELLE HOUSE GALLERIES,**  
**Rozelle Park, Monument Road,**  
**KA7 4NQ, 01292 443 708, www.**  
**south-ayrshire.gov.uk/galleries/  
rozellehouse**

**Until October 13**  
Professor Dugald Cameron. A  
Personal Passion.

**October 19 - January 19 2014**  
Small World. Collections in  
Aminature

**COCKBURN GALLERY, 41 High**  
**Street, Maybole, KA19 7AB, 01655**  
**884 067**

**September & October**  
Landscape, Seascapes studies  
exhibition.

**THE FRAMEWORK GALLERY,**  
**83 Portland Street, Troon, KA10**  
**6QU, 01292 316 144**

Continuous mix of original  
paintings and printwork by a  
variety of artists

**GLENBUCK ARTS, Glenbuck**  
**Cottage, Glenbuck, East Ayrshire,**  
**01655 894**

Open Wednesdays. Events to  
coincide with Angus Heritage  
Week

**ANNIE GILRUTH MEMORIAL**  
**HALL, Auchmithie, by Arbroath,**  
**DD11 5SY, 01241 431 511**

**MONTROSE LIBRARY EXHIBI-**  
**TION ROOM, DD11 4HS, 01674**  
**673256**

**Argyll**  
THE ARCHWAY, 7 Union Street,  
Lochgilphead, PA31 8JS, 01546  
606 894

**Studios**  
STUDIO BARN ARGYLL, Leac  
Na Ban, Tayvallich, Lochgilphead,  
PA31 8PJ, 01546 870 310, www.  
studiobarnargyll.co.uk, hamilton-  
argyll@btinternet.com

Seasonal exhibition of original  
art

**HELENSBURGH LIBRARY, West**  
**King Street, Helensburgh, G84**  
**8EB, 01436 658 833, Fax: 01436**  
**679 567**

**FYNE STUDIOS - THE HIDDEN**  
**GALLERY, Newton, Strachur, (off**  
**the A886), PA27 8DB, 01369 860**  
**379, www.fyne-studios.com**

Gallery of two Scottish artists  
Don McNeill & Jean Bell

**BLAIRMORE GALLERY & COFFEE**  
**SHOP, Pierhead Blairmore,**  
Dunoon, PA23 8JT, 01369 840 253,  
www.blairmoregallery.com

**Until October 5**  
Keith Salmon

**JUNO DESIGN GALLERY, 159**  
**Argyll Street, Dunoon, PA23 7DD,**  
01369 707 767, www.junoagency.com

**Until September 27**  
Stuart Hurd and Anthony Barber.  
Late Summer Exhibition. New  
works

**September 28 - November 15**  
Malcolm Warrilow & Morag  
Lloyds. Autumn Exhibition.

**RESIPOLE STUDIOS, Achardale,**  
**PH36 4HX, 01967 431 506, www.**  
**resipolestudios.co.uk**

New artspace with studios, gal-  
ery and framing service

**Until September 15**  
Helen Fryer and Jim Wright  
Celebrating the winners of the  
West coast of Scotland

**September 20 - October 13**  
Jan Gardner. Stories of Stillness.  
Solo exhibition

**THE STABLE GALLERY, Church**  
**Square, Inveraray, PA32 8TY,**  
01919 302 800

Paintings, reproductions, greet-  
ings cards, exclusive post cards

**TIGHNABRUACH GALLERY,**  
**Seaside House, Tighnabruach,**  
**PA21 2DR, 01700 811 681**

Original art, sculpture, glass,  
jewellery, poetry

**IONA HERITAGE CENTRE, Isle**  
**of Iona, PA76 6SL, 01681 700 576**

Paintings, reproductions, greet-  
ings cards, exclusive post cards

**IONA ABBEY, Abbey & MacEod**  
**Centres, Isle of Iona, PA76 6SN,**  
**01681 700 404, Fax: 01681 700 460**

Inspirational setting for services.  
Christian community

**IONA GALLERY AND POTTERY,**  
**Isle of Iona, PA76 6SW, 01681 700**  
**439, www.ionagallery.com, enq-**  
**uiries@ionagallery.com**

**ORSAY, 2 Stevenson Street, Oban,**  
**PA34 5NB, 01631 569 988**

Painting, ceramics, glass metal,  
textiles, wood lights, cards

**INVERBEG GALLERIES, Inver-**  
**beg, Argyll & Bute, Loch Lomond,**  
**G83 8PD, 01423 860 277**

**COWAL OPEN STUDIOS, PA23**  
**8QU**

**September 27 - 30**  
COWAL Open Studios. Visit the  
beautiful cowl peninsula and  
discover the artists working here

**CARDROSS CHURCH HALLS,**  
**Station Road, Cardross, G82 5NL,**  
**October 12 & 13**

Cardross Arts Group. Paintings  
and crafts. Obtain and view  
outstanding original paintings  
and crafts from one village.

**MACLAURIN ART GALLERY,**  
**Rozelle Estate, Monument Road,**  
**KA7 4NQ, 01292 443 708, www.**  
**south-ayrshire.gov.uk/galleries/  
maclaurin/**

**Until September 29**  
Imagined Skies. The Last  
Muirals of Tom Gillilan

# The

Clare Yarrington.  
**Until November 2**  
 Charman Pollok - Ghost Croft Archive - A Walk to Work  
**OTTERSBUEN GALLERY, 2A**  
 8th Avenue, Dumfries, DG1 1EF, 01387 247128, www.ottersburn.com, ottersburgall@aol.com  
**CLEUCH HOUSE, John Mellis**  
 Candlemaking, Auldirth, DG2 0TR, 01848 331280  
 Beeswax candles, hand-made beeswax furniture polish, hand-painted candle pots  
**WHITHORN VISITOR CENTRE,**  
 45-47 George Street, Whithorn, DG8 8NS, 01988 500 508  
**THOMAS TOSH, 19 East Morton**  
 Street & 55 Drumlanrig Street, Thornhill, DG3 5LZ, 01848 331 553, www.thomastosh.com, info@thomastosh.com  
**SPRING FLING OPEN STUDIOS, Gracefield Arts Centre, 28**  
 Edinburgh Rd, DGI 1JQ, 01387 213 218  
**Until October 4**  
 Spring Fling 2014 Application.

**Dundee**  
**DUNCAN OF JORDANSTONE**  
 COLLEGE OF ART & DESIGN  
 GALLERIES, University of Dundee, 13 Perth Road, DD1 4HT, 01382 385 330, Fax: 01382 385 363  
**Until September 21**  
 Mel Gooding and Bruce McLean, Knife Edge Press  
**Until September 21**  
 Cooper Summer Residency 2013, Invisible Residency with Mel Gooding and Bruce McLean  
**LAMB GALLERY, University of**  
 Dundee, Tower Building, Nethergate, DD1 4HN, 01382 385330  
**Until September 21**  
 The D'Arcy Thompson Print Folio  
 Making an Impact. Prints by major Scottish and international artists as well as staff and students from Duncan of Jordanstone College of Art & Design

**HANNAH MACLURE CENTRE,**  
 University of Abertay, Top Floor, Abertay Student Centre, 1 - 3 Bell Street, DD1 1HP, 01382 308 777  
**THE KRYSZYNA GALLERY,**  
 15A Nelson Street, DD1 2FN, 01382 320 522, www.kryszynagalery.com, kaszimir@lublinka.freereserve.co.uk  
 Figurative works, limited edition prints & watercolours - viewing by appointment  
**THE MC MANUS DUNDEE'S ART GALLERY & MUSEUM,**  
 Albert Square, Meadowside, DD1 1DA, 01382 307 200  
**Until November 17**  
 Modern Masters in Print  
**GALLERY Q, 160 Nethergate, DD1**  
 4DU, 01382 220 600  
**DUNDEE CONTEMPORARY ARTS (DCA), 152 Nethergate, DD1**  
 4DY, 01382 909 900  
**Until September 22**  
 Cortia Kent, Peter Davies, Ruth Ewan, Emily Floyd, Scott Myles & Ciara Phillips. There Will Be New Rules Next Week.

**Durham**  
**BOWES MUSEUM, Newgate,**  
 Barnard Castle, DL12 8NP, 01833 600 606, Fax: 01833 637163  
**Until December 31**  
 The Anglo-Saxons in the North  
**DLI MUSEUM & DURHAM ART GALLERY, Aykley Heads, DH1**  
 1TL, 0191 384 2214, Fax: 0191 3861770  
 Regular exhibitions call for full listings  
**Until October 6**  
 Fintan Dawson, Brass Suite, Signe Hamann  
**THE ORIENTAL MUSEUM, Elvet**  
 Hill, DH1 3TH, 0191 334 5694, Fax: 0191 334 5694  
**Until September 22**  
 White on White. Showcases the emerging talent of seven young South Korean ceramic artists.  
**Ceramics**  
**Until September 30**  
 Presenting Tomorrow's Designers. Edinburgh College of Art Graduates  
**THE FRUITMARKET GALLERY,**  
 45 Market Street, EH1 1DE, 0131 225 2383, Fax: 0131 220 3130  
**Until October 18**  
 Gabriel Orozco. Paintings, sculptures and photographs  
**October 26 - February 23**  
 2014  
 Louise Bourgeois. I Give Everything Away  
**INVERLEITH HOUSE, Royal**  
 Botanic Garden, 20a Inverleith Row, EH3 5LR, 0131 248 2971  
**Until September 22**  
 Douglas Gordon, Marina Faust, Mike Kelley, Sarah Lucas, Albert Oehlen, Michelangelo Pistoletto, Rudolf Polansky, Andreas Reiter Raabe, Anselm

**PETER POTTER GALLERY, 10**  
 The Sands, Haddington, EH41 3EY, 01620 822 080, www.peterpottergallery.org, peter\_potter@btconnect.com  
**Until November 2**  
 Liz Adamson and Alex Hare. WITCH  
**POLDRATE ARTS AND CRAFTS CENTRE, Poldrate Granary,**  
 Haddington, EH41 4DA, 01620 823 738, www.pacc.org.uk, info@pacc.org.uk  
 2nd Saturday of each month  
 Sew Fur, Sewing and Craft Group  
**September 23**  
 Term Starts. 21 classes or self help groups to offer. Check out the website to see full list  
**November 2 & 3**  
 Craft Fayre Extraordinaire. Look out for 'The Mill Fayre at Poldrate'  
**GULLANE ART GALLERY, 8**  
 Stanley Road (Main Street), Gullane, EH31 2AD, 01620 843 082  
**October 10**  
 Jotomo returns. Second solo show  
**September**  
 Helen Tabor, John Mackie, Joseph Maxwell Stuart and Maggie Vance. Late Summer Mixed Show  
**FIDRA FINE ART, 45 Dirleton**  
 Avenue, North Berwick, EH39 4BL, 01620 895057  
 200 years of Traditional and Contemporary Scottish Art  
**NATIONAL GALLERY OF**  
 SCOTLAND, The Mound, Princes Street, EH2 2EL, 0131 624 6200, www.nationalgalleries.org, enquiries@nationalgalleries.org  
**Until February 2 2014**  
 Rodin's The Kiss  
**THE ROYAL SCOTTISH ACADEMY BUILDING, Upper Galleries,**  
 The Mound, EH2 2EL, 0131 225 6671, Fax: 0131 220 6016, www.royalscotishacademy.org  
**Until September 30**  
 Ego. Self-portraits from the collections  
**Until October 6**  
 Kate Downie. Ink paintings and oil paintings  
**October 12 - November 7**  
 In Perspective. Presents a selection of works from RSA academicians and STAR Tapestry artists  
**Until January 27 2014**  
 James Miller  
**SCOTTISH NATIONAL PORTRAIT GALLERY, Queen St,**  
 EH2 1JD, 0131 624 6200  
**Until September 22**  
 Ken Currie. New Work  
 Valentina Bonizzi. Migration Stories  
 Man Ray Portraits  
**Until December 31**  
 The Modern Scot. Pioneers of Science. Blazing with Crismon. Tartan Portraits  
 George Jamesone. Scotland's First Portrait Painter  
**Until May 25 2014**  
 Ticking Jack. Comedy Greats from Sir Harry Lauder to Billy Connolly  
**Until December 31 2014**  
 Playing for Scotland. The Making of Modern Sport  
 David Hume and Allan Ramsay  
**SCOTTISH NATIONAL GALLERY OF MODERN ART, 75**  
 Belford Road, EH4 3DR, 0131 624 6200  
**Until November 3**  
 Witches and Wicked Bodies.  
**DEAN GALLERY, 75 Belford**  
 Road, EH4 3DR, 0131 624 6200  
**CITY ART CENTRE, 1-3 Market**  
 Street, EH1 1DE, 0131 529 3993, Fax: 0131 529 4097, www.edinburghmuseums.org.uk, MuseumsAndGalleries@edinburgh.gov.uk  
**Until September 29**  
 Dressed to Kill. Fashion, Costume and Dress in Scottish Art  
**Until September 29**  
 Presenting Tomorrow's Designers. Edinburgh College of Art Graduates  
**THE FRUITMARKET GALLERY,**  
 45 Market Street, EH1 1DE, 0131 225 2383, Fax: 0131 220 3130  
**Until October 18**  
 Gabriel Orozco. Paintings, sculptures and photographs  
**October 26 - February 23**  
 2014  
 Louise Bourgeois. I Give Everything Away  
**INVERLEITH HOUSE, Royal**  
 Botanic Garden, 20a Inverleith Row, EH3 5LR, 0131 248 2971  
**Until September 22**  
 Douglas Gordon, Marina Faust, Mike Kelley, Sarah Lucas, Albert Oehlen, Michelangelo Pistoletto, Rudolf Polansky, Andreas Reiter Raabe, Anselm

**East Lothian**  
**SEASHORE GALLERY, Marshall**  
 Street, Cockenzie, EH32 0HT  
 Paintings, jewellery, wood, ceramics, glass, prints, cards  
**DIRELTON GALLERY, Mans**  
 Road, Elvet, EH39 5EL, 01620 850 528, www.direltongallery.co.uk, enquiries@direltongallery.co.uk  
**artwork@famedram.com**



# Two willow workers from the South West

Mary Gladstone meets two craftsmen with contrasting approaches to this very flexible and expressive medium

WHETHER it is used for shopping, storing logs or even carrying one's spoils at the end of a fishing trip, there's something homely about a willow basket. Trevor Leat and Geoff Forrest are two basket-makers from the south-west. When entering Trevor's workshop in the old Auchencrain school on the Solway coast, you are confronted by the pleasant scent of drying willow, stacked in bundles in the corner of the room.

He supplies local galleries with 'strong, carrying' baskets in traditional English and French designs. Trevor was worked in this material for over 30 years, being originally attracted to the craft when he learned to make creels in Cumbria.

Geoff, who lives in New Galloway, arrived at willow-weaving through his occupational therapist's training. Both men have an innovative and imaginative approach. They see how baskets with their traditional function can be put to a new use.

"A salmon trap may be used as a sweet pea climber if there's no call for salmon traps, potato baskets become wall hangings and burden baskets can serve as designer log baskets."

These craftsmen are taking willow-work to new heights, quite literally in Trevor's case. With his associate, Alex Rigg, they create large-scale outdoor sculpture in 'flowing, figurative' lines.

Some figures are so large (the tallest is 50 feet) that they produce them in sections and assemble the sculptures at their destination. Many are burned ritually as at festivals:

Edinburgh's Hogmanay celebration on Calton Hill is one venue and another is the Wickerman Festival near Kirkcudbright. A common reservation about willow is its durability, but most baskets, if kept indoors, will last some time. Outdoors is different as it deteriorates fast. However, willow's transience is 'inherent in the craft.'

"Part of the beauty of a willow sculpture," explains Geoff, "is the way it breaks down. It's like us, when we get to a certain age, our bodies begin migrating south."

Both Trevor and Geoff teach their craft. "I'm showing a local lady how to weave her coffin," says Trevor, "and she's using her home-grown willow."

Coffin-making in this material is a perfect example of sustainability and "coppicing," explains Geoff, "or cutting back a hard wood tree every few years is another."

In folklore the willow is associated with magic because if you push a long green stick into the ground, it will grow. Working with 'living' (green) willow, as opposed to the dried variety, often stripped of its bark, is a relatively new practice and its most adventurous

proponent is Marcel Kalberer (www.sanftstrukturen.de), whose first UK 'living' willow installation took place in Argyll earlier this year.

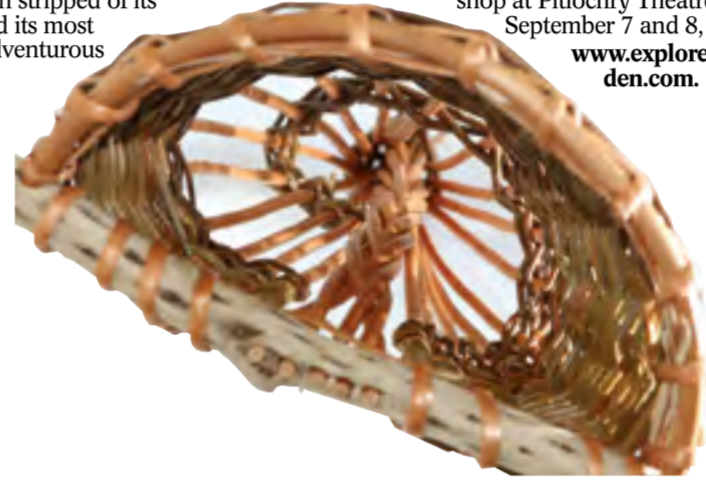
Trevor and Geoff work with 'living' willow in school projects, building tunnels, domes and arbours. They plant in December so that by the following June their original green sticks are in full leaf.

While Trevor's hallmark is the long, fluid lines of his animal and human figures, Geoff's contemporary work has a theme of leaves and spines. Taking his inspiration from nature, he weaves leaf shapes so that a conventionally-shaped tray may take the form of a leaf.

These creations rely as much on light and shade as the physical material itself. His interest in the spine stems from his occupational therapy days when he studied spinal trauma. In his sculpture he tries to incorporate an evolving spine into his woven piece.

Historically, when man needed containers to carry things, basket-weaving was as important as growing food. Although, today alternative materials for making containers have been found, nobody has managed to invent a machine that can weave willow, so it is work we still have to do.

Trevor Leat is conducting a Willow Sculpture Workshop at Pitlochry Theatre on September 7 and 8, 2015  
 www.exploresgardens.com.



Far Left, studio scene in Trevor Leat's studio; Next, Leat with willow deer; Left and above, basket work from Geoff Forest. Top right photo, Helen J Houston.

# Guide

Reyle, Rudolf Stengel and Heimo Zoberner. Mostly West. Franz West (1947-2012) and Artist Collaborations  
**THE QUEEN'S GALLERY, Palace**  
 of Holyroodhouse, Abbeyhill, EH8 8JX, 0131 556 5100  
**Until October 6**  
 In Fine Style: The Art of Tudor and Stuart Fashion  
**Until November 10**  
 Leonardo da Vinci: The Mechanics of Man  
**TALBOT RICE GALLERY,**  
 University of Edinburgh, Old College, South Bridge, EH8 9YL, 0131 650 2211  
**Until October 19**  
 Transmitted Live: Nam June Paik. Resound  
**BOURNE FINE ART, 6 Dundas**  
 Street, EH3 6HZ, 0131 557 4050  
**THE DI ROLLO GALLERY, 18a**  
 Dundas Street, EH3 6HZ, 0131 557 5227  
**OPEN FIVE GALLERY, 34**  
 Abercromby Place, EH3 6QE, 0131 557 1020  
**Until September 21**  
 Rory McEwen. Tulips and Tulipomania. Paintings  
**September 9 - 25**  
 Catharine Davison. This Land Ate My Heart. Mixed media works and watercolour paintings  
 Jonathan Gibbs. Fish Bone. Wood engraving  
**THE SCOTTISH GALLERY, 16**  
 Dundas Street, EH3 6HZ, 0131 558 1200, Fax: 0131 558 3900  
**September 9 - October 2**  
 Susan Cross. Retrospective.  
**September 9 - October 2**  
 Alexandra Knubley. New work  
 Jane Keith. Linear Landscapes. John Houston. Overseas  
**TORRANCE GALLERY, 36**  
 Dundas Street, EH3 6JN, 0131 556 6366, www.torrancegallery.co.uk, enquiries@torrancegallery.co.uk  
**Until September 14**  
 Joseph Maxwell Stuart  
**September 21 - October 12**  
 Lynn Rodgie and Jennifer Mackenzie  
**October 19 - November 2**  
 Drum  
**THE DUNDAS STREET GAL-**  
 LERY, 6 Dundas Street, EH3 6HZ  
 November 2 - 4  
 Catriona Mann & Jennifer Pettigrew. November Exhibition  
**INGLERY GALLERY, 15**  
 Calton Road, EH8 8DL, 0131 556 4411  
**Until September 21**  
 Peter Liverside. Doppelgänger  
**Until October 31**  
 Peter Dong. Billboard for Edinburgh  
**COLLECTIVE GALLERY, 22-28**  
 Cockburn Street, EH1 1NY, 0131 220 1260  
**EDINBURGH PRINTMAKERS**  
 WORKSHOP GALLERY, 23 Union Street, EH1 3LR, 0131 557 2479, Fax: 0131 558 8418, www.edinburghprintmakers.co.uk, info@edinburgh-printmakers.co.uk  
**Until October 6**  
 Shelagh Atkinson, Roberta Buchan, Matthew Carey Simos, Andy Cumming, Pat Crombie, Anne Forte, Ian Ferguson, Linda Kosciwicz-Fleming, Laura Gressani, John Heywood, Lucie Hrnickova, Roma Maclean, Cat Outram and Ana Speedie. Edinburgh Printmakers at ROSL. A selection of contemporary art in print at 100 Princes Street in The Royal Overseas League  
**PATRIOTHALL GALLERY @**  
 WASPS, 1d Patriothall, off Hamilton Place, Stockbridge, EH3 5AY, 0131 226 7126  
**Until September 10**  
 Hidden Art. RNIB's Hillside Visually Impaired Art Group and 'The Revealed Photography Group'  
**September 28 & 29**  
 Open Doors Events.  
**October 17 - 29**  
 Kirsy O'Connor  
**ROYAL FINE ART COMMISSION GALLERY, Bakehouse**  
 Close, 146 Canongate, Midlothian, EH8 8DD  
**STILLS GALLERY, 23**  
 Cockburn Street, EH1 1BB, 0131 622 6200  
**Until October 27**  
 Angela Ferreira. Political Cameras  
**ROYAL BOTANIC GARDEN**  
 Edinburgh, 20a Inverleith Row, EH3 5LR, 0131 552 7171, Fax: 0131 248 2901  
**Until September 29**  
 Scotland's Lost Gardens. Images  
**Until October 20**  
 The World of Palms.  
**ADAM HOUSE, 3**  
 Chambers Street, EH1 1HR, 0131 650 8058  
**TARTAN GALLERY AT THE**  
 LAUREL GALLERY, The Laurel Gallery, 58 St Stephen Street,  
 Stockbridge, EH3 5AL, 0131 226 5022, www.tartangallery.com, enquiries@tartangallery.com  
**THE ADAM POTTERY, 76**  
 Henderson Row, EH3 5BJ, 0131 557 3971  
 Thrown, sculptural and hand-built ceramics  
**PENICUIK COMMUNITY ARTS**  
 ASSOCIATION, 4 West Street, Penicuik, Midlothian, EH26 9DL, 01968 678 804  
**October**  
 Jo Powell's Children's Art Classes  
**September**  
 Penicuik Turner Prize and Open Exhibition  
**EDINBURGH COLLEGE OF ART,**  
 Lauriston Place, EH3 9DJ, 0131 221 6109, Fax: 0131 221 6109, www.eca.ac.uk, continuing-studies@eca.ac.uk  
**LEITH SCHOOL OF ART, 25**  
 North Junction Street, EH6 6HW, 0131 554 5761, Fax: 0131 554 5514, www.leithschoolofart.co.uk, enquiries@leithschoolofart.co.uk  
**NATIONAL MUSEUM OF SCOT-**  
 LAND, Chambers Street, EH1 1HE, 0131 225 7534  
**Until September 29**  
 Ilana Halperin. The Library  
**Until November 17**  
 Mary Queen of Scots  
**Until March 13 2014**  
 Arctic Convoys  
**NATIONAL LIBRARY OF SCOT-**  
 LAND, George IV Bridge, EH1 1EW, 0131 623 3700, Fax: 0131 623 3701  
**ISTITUTO ITALIANO DI**  
 CULTURA, 82 Nicolson Street, EH3 9EW, 0131 668 2232  
 Ongoing arts lectures, exhibitions & performances; Italian classes  
**DANISH CULTURAL INSTI-**  
 TUTE, 3 Doonie Terrace, EH3 6DY, 0131 225 7189, Fax: 0131 220 6162  
 Check website for more details  
**L'INSTITUT FRANCAIS**  
 D'ECOSSE, 13 Randolph Crescent, EH3 7TT, 0131 225 5366, Fax: 0131 220 0648  
**MCCREA GALLERY, 298**  
 Portobello High Street, EH15 2AS  
**GREYFRIARS KIRK, 86**  
 Candlemaker Row, EH1 2QQ, 0131 225 1900  
**MORNING SIDE GALLERY, 94**  
 Morningside Road, EH10 4BY, 0131 447 3041  
**October**  
 Jacqueline Orr. Paintings  
**MCAUGHTAN'S BOOKSHOPS**  
 AND GALLERY, 3a & 4a Haddington Place, EH7 4AE, 0131 556 5897, www.mcaughtansbookshop.com, mcabooks@btconnect.com  
**Until September 29**  
 Penelope's Sisters. Seven textile artists  
**October 1 - November 9**  
 Charly Murray and Javier Ternero. Images from Ireland  
**DOVECOT STUDIOS, 10**  
 Infirmery Street, EH1 1LJ, 0131 550 3666, Fax: 0131 550 3669  
**Until September 14**  
 Artist Rugs. Contemporary Rug Collection  
 Fleeces to Fibre. The Making of the Large Tree Group Tapestry  
**Until December 20 (Saturdays**  
 Only)  
 Tapestry and Rug Collection  
**COBURG HOUSE ART STU-**  
 DIOS, 15 COBURG STREET, EH6 6ET, 0131 553 2266, coburghouseartstudios.wordpress.com, coburg.house@btconnect.com  
**September 21 - October 2**  
 Vicky Blackburn. Solo exhibition  
**WHITESPACE GALLERY, 11**  
 Gayfield Square, EH1 3NT, 0781 451 4771  
**SCOTTISH SOCIETY OF**  
 ARCHITECT ARTISTS, RIAS, 15 Ratland Square, EH1 2BE, www.ssagallery.org.uk  
**MUSEUM OF CHILDHOOD,**  
 42 High Street, Royal Mile, High Street, EH1 1TG, 0131 529 4142  
**THE PEOPLE'S STORY MU-**  
 SEUM, 143 Canongate Tolbooth, Royal Mile, EH1 8SN, 0131 529 4057  
**THE WRITERS' MUSEUM, Lady**  
 Stairs House, Lady Stairs Close, Edinburgh, EH1 2PA  
**LAURISTON CASTLE, 2a**  
 Craigmoad Road South, Davidson's Mains, EH4 5QD  
**MUSEUM OF EDINBURGH,**  
 30/32A, Unit 3, Albion Business Centre, 78 Albion Road, EH7 5QZ, 0131 661 6000, Fax: 0131 661 0012, www.3d2d.co.uk, info@3d2d.co.uk  
**GALLERY TEN, 10**  
 Stafford Street, West End, EH3 7AU, www.galerierten.co.uk  
**November 6 - December 24**

27 - 30 september 2013  
**COWAL open studios**  
 visit the beautiful cawal peninsula and discover the artists working here  
 www.cowalopenstudios.co.uk

Inspired by...gallery  
**Haven**  
 26 September - 3 November  
 Vibrant bold watercolours by respected painter William Tillyer to mark his 75th year reveal his love of the landscape whilst addressing the themes of structure and geometry.  
 www.northyorkmoors.org.uk/exhibitions  
 or call: 01439 727238 FREE ADMISSION  
 The Moors National Park Centre, Danby, Whitby, North Yorkshire YO21 2NB

**RESIPOLE STUDIOS**  
 FINE ART GALLERY  
 www.resipolestudios.co.uk  
 01967431506

Barbara Davidson Pottery  
 The art and skill of making something lasting from a lump of clay - a 'pottery miracle' in Barbara Davidson's hands  
 www.resipolestudios.co.uk

**WITCH**  
 Liz Adamson / Alexa Hare  
 31 Aug - 02 Nov  
 PETER POTTER GALLERY  
 10 The Sands, Haddington  
 www.peterpottergallery.org  
 Charity No. SC003609

**cupar arts festival 2013**  
 5 - 17 october  
 www.cupararts.org.uk

**THE KRYSZYNA GALLERY**  
 15A NELSON STREET DUNDEE, DD1 2PN  
 DRAWINGS, PAINTINGS AND PRINTS  
 TEL: 01382 322522  
 e.mail:kryszzynart@gmail.com  
 www.kryszzynagallery.com

**NORTHERN BOOKS**  
 www.northernbooks.co.uk

**the meffan**  
 winter exhibition 2013  
 30 November - 3 January  
**CALL FOR ENTRIES**  
 EXHIBITION OPEN TO ALL ARTISTS RESIDENT IN SCOTLAND  
 Up to £1500 purchase prize in the Professional Category  
 £200 prize money in the Amateur Category  
 Please see entry form for full details - available to collect from all Angus Council's galleries, museums and libraries or by sending a S.A.E to: The Meffan Winter Exhibition, 20 West High Street, Forfar, DD8 1BB  
 A list of frequently asked questions is available on our website: www.angus.gov.uk/history/museums/meffan  
**the meffan 20 West High Street, Forfar, DD8 1BB • Tel 01307 476482**  
 Email the.meffan@angus.gov.uk  
 Images used in this poster feature last year's winners: Helen Angell-Preece - Darling, Red • Joe Fan - Dreaming of Babel  
 Tuesday - Saturday 10am - 5pm • Admission Free

# The ArtWork

Spectrum Collective. Studio Glass  
SCOTTISH ARTS CLUB, 24 Rutland Square, EH1 2BW, 0131 229 8157

VERMILLION STUDIOS (FORMERLY EMBASSY), 76 East Crosscauseway, EH8 9HQ  
SUMMERHALL, 1 Summerhall, LE9 1P, 0845 874 5000  
Until September 23

Ryan The Wheelbarrow. Werker. Live Fashion Vandalism  
Until September 27

Selected from The Richard Demarco Archive. Demarco European Art Foundation  
Derek Jarman. The Blue Book. Fiona Banner. The Vanity Press. Three video works at the Meadow Gallery and surrounding galleries

Jane Freere. Return Of The Soul - The Wall - The Void. At the Richard Demarco Gallery  
THE LEITH GALLERY, 65 The Shore, EH6 6RA, 0131 553 5255, www.the-leith-gallery.co.uk, info@the-leith-gallery.co.uk

September 14 - October 5  
A Life in Paint: Douglas Phillips (1926-2012). A retrospective

## Falkirk

THE PARK GALLERY AND CALLENDAR HOUSE, Calendar Park, FK1 1YR, 01324 501 789, www.falkirkcommunitytrust.org/venues/park-gallery, artsandcrafts@falkirkcommunitytrust.org.uk  
Until November 16

Ian Hamilton Finlay. Nature over again after Poussin 1979 -1980. (Artist Rooms)

THE WEST END GALLERY, 3-45 West George Street, G2 2JG, 01324 613 100, www.thewestend-gallery.co.uk

KING'S COURT GALLERIES, The Picture Shop, 631 002, Garscube Road, G12 8JL, 01324 631002

Artist's materials - painting, jewellery, ceramics, framing, sculpture, designer furniture and fashion range

DELTA STUDIOS, Lochlands Business Park, Larbert, FK5 3NS, 01234 555 500

Artists studios and workspaces for rent or lease  
FORTH VALLEY OPEN STUDIOS, 29 Garroch Crescent, FK1 5QH  
An annual nine-day event which takes place in the Forth Valley, Central Scotland

## Fife

EAST NEUK OF FIFE OPEN STUDIOS, East Neuk, 01333 730 249, www.eastneukopenstudios.org, eastneukstudios@yahoo.co.uk

GERRY PINE GALLERY, Gerry Pine, 67 Nethergate North, Craik, KY10 3TX, 01333 450 842, www.pineart.co.uk, artcourses@pineart.co.uk, info@chessmail.co.uk

Landscape Painting  
KIRKCALDY MUSEUM & ART GALLERY, War Memorial Gdns, Abbotshall Road, Kirkcaldy, KY1 1YQ, 01592 412 860

JOHN NELSON STUDIO GALLERY, 26 Milton Place, (on A917 - 15mins from St Andrews), 01334 555 500, www.johnnelsonart.com, info@johnnelsonart.com

Featuring paintings and prints by John Nelson  
PITTEENWEEM ARTS FESTIVAL, Festival Office, 47 High Street, Pittenweem, KY10 2PG, 01333 313 903, www.pittenweemartsfestival.co.uk, info@pittenweemartsfestival.co.uk

CRAIL POTTERY, 75 Nethergate, The Square, Crail, KY10 3TX, 01333 451 212

Huge variety of handthrown stoneware, terracotta, earthenware & raku  
SCOTTISH FISHERIES MUSEUM, St Ayles, Harbourhead, Anstruther, KY10 3AB, 01333 310 628

Until January 5 2014  
Sam Smith. The Art of Sam Smith: Boots, Beasts and Beaus. Boots and handbar scenes

FISHER STUDIO AND GALLERY, 11-13 High Street, Pittenweem, KY10 2LA, 01333 312 255, www.fishergallery.co.uk, enquiries@fishergallery.co.uk

Mixed exhibition including James Fraser and Astrid Trugg. Changes to the exhibition throughout May, June and July. Check website for details

THE COACH HOUSE GALLERY, School Wynd, Pittenweem, Anstruther, KY10 2PN, 01333 313 700

THE LITTLE GALLERY, 20 High Street, Pittenweem, KY10 2LA, 01333 311 227

FUNKY SCOTTISH, 41 High Street, Pittenweem, KY10 2PG, 01333 312 567

THE OUTRYE GALLERY, 3 School Drive, Ovens-ton, Pittenweem,

To Advertise...

# The ArtWork

## Douglas Phillips 1926 - 2012



Douglas Phillips, Harvest Field Behind the Row, Catterline

THE MONTH of September sees a double tribute to the work of Douglas Phillips, one of Scotland's most prolific painters, who died last year.

The Leith Gallery has a retrospective of his work running from September 14 to October 5, while the Aberfeldy Gallery, under the heading Family Connections, is showing a selection of his work along with that of his daughter Deborah. Their shows run from September 7 to October 23.

## FRAMES GALLERY

Lucy Campbell

A Solo Exhibition of new work

4th - 26th October 2013

10 Victoria Street Perth PH2 1HF · Tel. 01738 631085

www.framesgallery.co.uk info@framesgallery.co.uk

Dumfries & Galloway

## Maisie & Mac Art & Contemporary Craft

Fabulous work from artists and designer-makers from all over the UK ...

www.maisieandmac.com

10-5, Mon-Sat, 1 St Catherine St, Cupar, Fife

Autumn Exhibition

Ian Cameron  
Ann Vastano  
Jane Lannagan  
Neil McIntyre

Ring: 01436 672544

# The Guide

Ursula Keller. Photomontage Display. A display of 6 hand processed photomontages showing an alternative view of Glasgow

THE BURRELL COLLECTION, Pollok Country Park, 2060 Pollokshaws Road, G43 1AT, 0141 287 2550, Fax: 0141 287 2597  
Until December 23

Gilt and Silk. Early seventeenth century - costume. Showcases early 17th century costume in the Burrell Collection  
Until January 5 2014

Burrell's Masters of Impressionism. Collection of 19th Century French paintings and pastels  
GALLERY OF MODERN ART (GOMA), Royal Exchange Square, G1 3AH, 0141 287 3050, Fax: 0141 287 3062

Until October 27  
Eric and Jean Cass. Nikki de Saint Phalle. Contemporary works including sculptures, ceramics, drawings, prints and paintings

Until February 2 2014  
A Picture Show. An exhibition by 12 Glasgow painters  
Until March 1 2014  
Ian Hamilton Finlay (1925-2006)

RIVERSIDE MUSEUM, 1 Bunhouse Road, G3 8DP, 0141 287 2720  
Scotland's Museum of Transport and Travel

GLASGOW MUSEUMS, Culture and Sport Glasgow, 20 Trongate, G1 5ES, 0141 287 4356  
Call or visit website for full details

ST MUNGUS MUSEUM OF RELIGIOUS LIFE AND ART, 2 Castle Street, G1 2JG, 0141 276 1625, 0141 276 1626  
Until December 31  
Peter Howson's Crucifixion 2010. Painting

SCOTLAND STREET SCHOOL MUSEUM, 225 Scotland Street, G2 8QB, 0141 287 0500, Fax: 0141 287 0515  
Until January 5 2014  
Bathing Belles. History of swimming and bathing, and in particular at the development of suitable clothing

GLASGOW MUSEUM RESOURCE CENTRE, 200 Woodhead Road, South Nithill Industrial Estate, G53 7NN, 0141 276 9300  
OPEN MUSEUM, 200 Woodhead Road, South Nithill Industrial Estate, G53 7NN, 0141 276 9368

CENTRE FOR CONTEMPORARY ARTS (CCA), 350 Sauchiehall Street, G2 3JF, 0141 352 4900, Fax: 0141 332 3226  
OPEN MUSEUM, 200 Woodhead Road, South Nithill Industrial Estate, G53 7NN, 0141 276 9368

Until September 14  
Shelly Nadashi. Ian Galloway, Jacob Kerray and Owen Piper. Camcorder Guerrillas Activist Video Training

Until November 30  
Artd Uveilo, Liliane Linj, Aileen Campbell, Luke Fowler, Kjersti Andvig and Mai Hoffstad Gunnæs. The A Collaborative Initiative

Until March 27 2014  
Pop-Up! Programmers. A new creative training programme for 18-24 year-olds  
GLASGOW SCHOOL OF ART, 116 Kingsway, G3 6RQ, 0141 353 4589

September 21 & 22  
Glasgow Doors Open Days  
Digital images  
September 14 - 28  
Graduate Degree Show 2013

Until October 29  
Yusuke Yamamoto and Satoko Takemura. At Western corridor, First floor, Mackintosh building

Until September 29  
Pio Abad, Jonathan Baldock, Josh Blackwell, Jim Lambie, Hew Locke, Alex Pollard, Eva Rothschild, Karin Ruggaber and Renee So. A Conspiracy of Detail. Runs in the Mackintosh Museum

Until October 26  
New Artists New Work. THE SQUASHED FROG STUDIO, Glenmoriston, IV63 7XN  
HICA (HIGHLAND INSTITUTE OF CONTEMPORARY ART), Inchmorie, Inverness, six miles W of Inverness, 01463 815 573, www.inchmoriegallery.co.uk, inchmore@btinternet.com

Until October 26  
CRAIGHEAD VISITOR CENTRE, Mugdock Country Park, Craigalvan Road, Near Milngavie, G62 8EL, 0141 956 6100  
CLYDE MARITIME CENTRE, 100 Stobcross Rd, G3 8QQ, 0141 339 6631

The Tall Ship at Glasgow Harbour. Glenlee (1896), one of only 5 Clyde-built sailing ships left afloat  
TRAMWAY, 25 Albert Drive, G41 2PE, 0141 276 0950, Fax: 0141 276 0950

Until September 22  
Brian Griffiths. Borrowed  
MACKINTOSH CHURCH, CRM Society, Queen's Cross Church, 870 Garscube Road, G20 7EL, 0141 946 6000, Fax: 0141 946 2776

THE HUNTERIAN MUSEUM AND ART GALLERY, University of Glasgow, University Avenue, G12 8PQ, 0141 330 4221  
September 13 - January 5 2014  
Alan Cameron. Portraits of the Enlightenment

MACLELLAN GALLERIES, 270 Sauchiehall Street, G2 3EH, 0141 365 4137  
152nd Annual Exhibition - RGI '13. Open to all artists. See www.royalglasgowinstitute.org for artist entry guidelines

Until October 6  
Vytautas Pletkus, Arturas Valiuga, Algirdas Ruzkus, Vilma Samulionyte, Mindaugas Azulius, Arunas Kulikauskas, Gedrius Liagas, Vytautas Stanionis and Alvydas Lukys. Borderland

Until January 6 2014  
The Aviemore Gallery

Autumn Exhibition  
Ian Cameron  
Ann Vastano  
Jane Lannagan  
Neil McIntyre

Ring: 01436 672544

# The Guide

RG1 KELLY GALLERY, 118 Douglas Street, G2 4ET, 0141 248 6386, www.royalglasgowinstitute.org, kelly@royalglasgowinstitute.org

Until September 28  
Kate Downie. Walk Through Resonant Landscape. New works

Until September 29  
Royal Glasgow Institute of the Arts

Until October 6  
Walk Through Resonant Landscape. Ink paintings and oil paintings

RSW, 5 Oswald Street, G1 4QR, 0141 248 7411, Fax: 0141 221 9417, www.rsw.org.uk, info@rsw.org.uk  
The Royal Scottish Society of Painters in Watercolour  
THE ANNAN GALLERY, 161 Woodlands Road, G3 6LL, 0141 332 0028

Until September 8  
George Birrell  
ROGER HILLCLIFFE GALLERY, 134 Woodland Street, G2 4EL, 0141 553 5890, Fax: 0141 237 4543

SCOTLANDART.COM GLASGOW GALLERY, 193 Bath Street, G2 4HU, 0141 221 4502

ARTERIES GALLERY, 185a Bath Street, G2 4HU, 0141 222 2830, www.arteriesgallery.co.uk, neil.moon@connect.com

DOWNIE ALLISON DOWNIE GERBER FINE ART, 178 West Regent Street, G2 4RL, 0141 221 3095, www.gerberfineart.co.uk, mail@gerberfineart.co.uk  
British paintings, sculpture and drawings

Until September 21  
Tony B. Chan. The Road to the Isles. New Scottish watercolours  
EWAN MUNDY FINE ART, 211 West George Street, G2 2JW, 0141 248 9755, Fax: 0141 248 9794

GLASGOW GALLERY, 48 King Street, G1 5QT, 0141 552 0704, Fax: 0141 552 2919  
Various artists. 40 Years and 40 Artists

MANSFIELD PARK GALLERY, 5 Hyndland Road, G11 5QE, 0141 342 4124  
HUGHSON GALLERY, 1 Clevedon Gardens, G12 9QL, 0141 247 2473

GLASGOW SCULPTURE STUDIO, 145 Kelvinhaugh Street, G3 8PX, 0141 204 1740, Fax: 0141 221 3801

October 5 - December 20  
Haegue Yang  
THE HIDDEN LAKE, 1163 Argyle Street, G3 8ND, 0141 564 1363

Until September 20  
A Challenge to Time. Domicile (Tarabidiane (1912-1985))  
CHRISTO'S GALLERY, 595 Great Western Road, G12 8HX, 0141 579 0004

Until September 20  
Westonhouse Road, G14 9JW, 0141 276 9696, Fax: 0141 276 9678

Until September 20 & 21  
Friends Electric  
Eastern Festival. A two-day festival of music from Scotland and beyond

FLORENTINA GALLERIES, 26-28 Battlefield Road, Langside, Lanarkshire, G12 9QL, 0141 649 8888, Fax: 0141 649 1423

THE GATHEOUSE GALLERY, Roukeneng Road, Giffnock, G46 7UG, 0141 620 0235  
EASTWOOD PARK GALLERY/ THEATRE, Eastwood Park, Roukeneng Road, Giffnock, G46 6UG, 0141 577 4970

Open access print studio and education facility. Regular weekend and evening courses available. Call for full details  
INCHMORIE GALLERY, Inchmorie, Inverness, six miles W of Inverness, 01463 815 573, www.inchmoriegallery.co.uk, inchmore@btinternet.com

Until October 26  
New Artists New Work. THE SQUASHED FROG STUDIO, Glenmoriston, IV63 7XN  
HICA (HIGHLAND INSTITUTE OF CONTEMPORARY ART), Inchmorie, Inverness, six miles W of Inverness, 01463 815 573, www.inchmoriegallery.co.uk, inchmore@btinternet.com

Until October 6  
Liam Gillick  
PICTURE THIS, 18 Church Street, IV1 1EB, 01463 238823

Until October 6  
Liam Gillick  
PICTURE THIS, 18 Church Street, IV1 1EB, 01463 238823

Until September 22  
Brian Griffiths. Borrowed  
MACKINTOSH CHURCH, CRM Society, Queen's Cross Church, 870 Garscube Road, G20 7EL, 0141 946 6000, Fax: 0141 946 2776

THE HUNTERIAN MUSEUM AND ART GALLERY, University of Glasgow, University Avenue, G12 8PQ, 0141 330 4221  
September 13 - January 5 2014  
Alan Cameron. Portraits of the Enlightenment

MACLELLAN GALLERIES, 270 Sauchiehall Street, G2 3EH, 0141 365 4137  
152nd Annual Exhibition - RGI '13. Open to all artists. See www.royalglasgowinstitute.org for artist entry guidelines

Until October 6  
Vytautas Pletkus, Arturas Valiuga, Algirdas Ruzkus, Vilma Samulionyte, Mindaugas Azulius, Arunas Kulikauskas, Gedrius Liagas, Vytautas Stanionis and Alvydas Lukys. Borderland

Until January 6 2014  
The Aviemore Gallery

Autumn Exhibition  
Ian Cameron  
Ann Vastano  
Jane Lannagan  
Neil McIntyre

Ring: 01436 672544

# The ArtWork

## A tale of two jumperooters

IT MIGHT BE argued that you would not be wise to trust any man who, if left alone in a room with a tea cosy, does not at some stage place it on his head to see what it looks like.

Not at all. I would suggest that few women would be so foolish as to do so. They may be portrayed as the more frivolous of the species but I would be loath to trust any woman who was so tempted and yet conversely I would also be loath to trust any man who was not.

In truth, though, we are all drawn to the absurd. Walk through any city on a Sunday morning and you will find seven per cent of our population sitting in large cold buildings with their eyes closed speaking to an invisible God and a goodly number of our citizens staggering home with a sore head after celebrating the victory of their team, when members of that team are perfectly likely to switch sides at the waving of a cheque book to the very team that our revellers are so chuffed at having beaten.

Last week I was asked to review two books. One by a man called Wee Davie who works out of the smallest and most expensive office in Edinburgh - the police box opposite the Tron (it was recently sold for £104k) and the other Big Lesley (Riddoch) who operates out of one of the biggest and most wobbly for she sits upon a mountain of publicity as one of Scotland's leading commentators.

Both are, after a fashion, friends of mine. Wee Davie's book has had a print run of around six copies, all of which he keeps in his police box whilst Big Lesley's (it's called Blossom) will sell by the thousand (through Luath - £11.99).

Now both of these books should be read for their absurdity. Davie's is about the career of a jumperooter. This may be a trade with which you are not familiar. The role of the jumperooter is to spend his time like a rabbit in a hole lying in wait down various closes and then jumping out when a ghost tour passes. It is not a trade that many mothers dream of for their children.

Conventionally speaking, Davie's book is appallingly written, he breaks virtually every rule of grammar and sentence structure, and that's just in the first paragraph.

It is indeed the sort of book which, once you have put down, you cannot pick up again. And yet it is also rather magnificent. Here is a man living in, by his evaluation, straitened circumstances who has bothered to get that book he was always meaning to write down on paper and out on the market. And it tells a story worth telling.

It is the new story of our streets. Edinburgh is now indeed the Athens of the north, but in a new way for its streets and alleys are now alive with Greek, Spanish and indeed Polish youngsters looking for work, even, it seems, as jumperooters.

And then there is Lesley's efforts. She too is in many ways a jumperooter, someone whose role in life is to jump out of the radio or indeed one of her Scotsman columns and give us a start, make us think. Her writing is magnificent, she follows every rule of grammar and convention and, once started, her book is difficult to put down.

And yet her book is also slightly absurd, for she seems determined to convince us that Scotland is full of people who are prepared to take a risk and give it a go, strive for new ideas, volunteer for things, build a new Jerusalem in this our surely has-been and often unpleasant land.

And yet it is also rather magnificent, often inspiring and certainly well thought through and presented. In the next few weeks I intend to organise a social occasion.

The next time I can find the cash for a couple of what they absurdly call their Vente coffees I intend buying a couple of Starbucks tea evaders for wee Davie and Big Lesley and they can stand together in the space between the police box and Starbucks and get the craque.

Because they need each other, and we need them. And their optimism and hunger for life.

I'll bet you that if I offer them both a tea cosy it will be Wee Davie who will try and put it on his head.

MAXWELL MACLEOD

## ROZELLE HOUSE GALLERIES

Goudie Collection Ongoing through 2013.  
A Personal Passion Forerunner Dugald Cameron OBE DSc DA, Until 13th October.  
A World Collections in Miniature, 19th October - January 2014.

THE MACLAURIN ART GALLERY  
Imagined Skies Tom Gillilan 1893-1973, until 29th September.  
Save the Children Ayrshire Art Exhibition, 14th October - 10th November.

Craft Shop A superb range of unique crafts & gifts including fused glass, metalwork & silver jewellery, colourful ceramics, woodcraft & cards.  
Rozelle House & MacLaurin Art Gallery Open: Mon - Sat 10am - 5pm, Sun 12noon - 5pm  
Rozelle Park, Monument Rd, Ayr KA7 4NQ T: 01292 445447/443708

MCKECHNIE INSTITUTE, GIRVAN  
More Your Paintings Paintings from the Collections, 7th September - January 2014.  
McKechnie Open Art Exhibition Paintings by Local Artists, until 28th September.  
Girvan Camera Club Members' Exhibition, 5th October - 30th November.  
Open: Tues, Thur, Fri 1pm - 4pm, Wed 1.30pm - 4.30pm, Sat 10.30am - 4pm, (Closed Sun & Mon)  
McKechnie Institute, Dalrymple Street, Girvan KA26 9AE T: 01465 713643

www.south-ayrshire.gov.uk/galleries

## M'NAUGHTAN'S BOOKSHOP & GALLERY

3a & 4a Haddington Place, (Leith Walk), Edinburgh EH7 4AE

September 3 - 29  
PENELOPE'S SISTERS  
7 Textile artists

October 1 - November 9  
CHARLY MURRAY & JAVIER TERNERO  
Images from Ireland

http://www.mcnaughtansbookshop.com/  
Open Tuesdays-Saturdays 1100-1700

# The ArtWork

## Kelso

KELSO POTTERY, The Knowes, 100 metres behind Kelso Abbey, Kelso, TD5 7BH, 01573 224 027  
Mugs, jugs, bowls & Time Tablets fired in the Kelso Pit Kiln  
THE VENNEL GALLERY, Denise Playfair, 11 Bridge Street, TD5 7HT, 01573 224 003, www.playfairpotterarts.co.uk, vennelgallery@live.co.uk

Bespoke Picture Framer. Animal portrait commissions. Art and needlework supplies.

KENDAL MUSEUM, Station Road, LA9 6BT, 01539 815597, Fax: 01539 737976  
Until September 19  
Anthe Walsh. Approximating Animals. A solo exhibition of new work combining elements of taxidermy craft and hand embroidery

Until October 31  
Carl Church. The Great Dodo Exhibition. Display of variety of Dodos

Kilmarnock  
DICK INSTITUTE, 1 Elmbank Avenue, KA1 3BU, 01563 554 340

KINGUSSIE GALLERY/SHIRAK, 1324 Strathclyde, PH21 1HX, 01540 662 280  
Local artists' works and oriental carpets from Afghanistan

IONA GALLERY, Duke Street, PH21 6G, 01540 655 538  
SUMMERLEIGH MUSEUM, Heritage Way, Coatbridge, ML5 1QD, 01236 638600

Until September 15  
Ionic Artists in Ionic Places. Photography, mixed media and installation

BLACKBURN MUSEUM & ART GALLERY, Museum Street, Blackburn, BB1 7AJ, 01254 667 130  
Call for details

BOLTON MUSEUM ART GALLERY & AQUARIUM, Le Mans Crescent, Bolton, BL1 1SE, 01204 332 211  
Until October 27  
David Livesey. My Northern Paintings. Showcase

Until January 5 2014  
Sports, Spectacles and Spectators. Richard Gaskill's interpretation of Humphrey Spender's 'Worktown'

MID PENNINE ARTS & GALLERY, York Street, Burnley, BB11 1HD, 01282 421986  
TURNPIKE GALLERY, Civic Square, Leigh, WN7 1EB, 01942 404 469, Fax: 01942 828 540

KEN BROMLEY ART SUPPLIES, Cartron House, Cartron Road, Bolton, BL1 4RW, 01204 381900, Fax: 01204 381123, www.artsupplies.co.uk, sales@artsupplies.co.uk

BACK-RIDGE GALLERY, Twitser Lane, Waddington, Clitheroe, BB73AL, 01200 427304  
Former working farm has been transformed into a work-haven for local designers and craftsmen

# The

**Liverpool**  
THE LINE GALLERY, 238 High Street, EH49 7ES, 01506 670 268

**Until October 6**  
Chagall: Modern Master. Explores the work of Marc Chagall (1887-1985)

**Until October 6**  
Moyra Davey. Hangmen of England. Photography

**BLUECOAT ARTS CENTRE**, School Lane, L1 3BX, 0151 709 5689

**October 19 - November 15**  
Tim Whittaker, Sam Davis and Roy Holt. Deal School.

**September 28 - November 24**  
Various artists. 3 am: wonder, paranoia and the restless night. Paintings, drawings, videos, sound works, photographs and sculptures

**LADY LEVER ART GALLERY**, Lower Road, Port Sunlight Village, Wirral, CH62 5EQ, 0151 478 4136

**Until January 12 2014**  
The Drawings of Edward Burne-Jones

**THE WALKER**, William Brown Street, L3 9EL, 0151 478 4199

**Until SEPTEMBER 15**  
Rankin. ALIVE: In The Face of Death. Photography

**Livingston**  
HOWDEN PARK CENTRE, Arts Services, West Lothian Council, Howden Park Centre, EH54 6AE, 01506 773 858

**Until October 13**  
Paul Boyle. Sea. Impressions. Expressive and abstract photography exploring the marks of the sea

**October 18 - December 8**  
John Donaldson. Into the Wild Wood.

**London**  
See details online at [www.artwork.co.uk/artguide.php](http://www.artwork.co.uk/artguide.php)

**Manchester**  
THE WHITWORTH ART GALLERY, The University of Manchester, Oxford Road, M13 6ER, 0161 275 7451, Fax: 0161 275 7451

**LOWRY ARTS & DIGITAL WORLD CENTRE**, Pier 8, Salford Quays, Salford, M5 2AZ, 0161 876 2000

**MANCHESTER ART GALLERY**, Mosley Street, M2 3JL, 0161 235 8888, Fax: 0161 235 8899

**Until September 22**  
do it 2013. A world first premiere for Manchester International Festival

**Until October 13**  
Between the Wars. Camille Pissarro, Alfred Sisley, Auguste Renoir, George Clausen, John Singer Sargent and Philip Wilson Steer. Channel Crossings. English and French Impressionism and Post-Impressionism

**CHINESE ARTS CENTRE**, Market Buildings, Thomas Street, M4 1EU, 0161 832 7271, Fax: 0161 832 7513

**Until October 12**  
Wu Chi-Tsung. Re-calibrate. September 21 - October 19

**Sophie Ho, Dian Luo, Yang Zhao and Donald Chung**. Re-Form Design Show.

**COLIN JELICO GALLERY**, 82 Portland Street, M1 4QX, 0161 236 2716

**Moray**  
MORAY COLLEGE UHL, Moray Street, Elgin, IV30 1JJ, 01343 576 413

**MORAY ART CENTRE**, The Park, Findhorn, IV36 3TA, 01309 692 426

**Until September 18**  
A Humane Architecture. Photographs of Edwin Smith

**Until September 22**  
Jonathan Wheeler. Watercolour FINDHORN POTTERY, 273 Pin-eridge, The Park, Findhorn, IV36 3TZ, 01309 691 601

The studio offers many recreational and educational opportunities. Check website for details

**THE GALLERY**, Elgin Library, Cooper Park, Elgin, IV30 1HS, 01343 562 600

Exhibitions by local artists and craftspeople

**JUST ART**, 64 High Street, Fochabers, IV32 7DH, 01343 820 500, [www.justart.co.uk](http://www.justart.co.uk), [mail@justart.co.uk](mailto:justart.co.uk)

**North Berwick**  
GREENS & BLUES, 59 High Street, EH39 4HG, 01620 890 666, [www.greensandblues.co.uk](http://www.greensandblues.co.uk), [info@greensandblues.co.uk](mailto:info@greensandblues.co.uk)

**September 14 & 15**  
Coast to Coast Race. THE COURT HOUSE, THE SEAMAN'S HALL, IV12 4AU, 01667 458510

**North Berwick**  
Kirstie Cohen & Erni Upton. New Work - Scottish landscape and seascapes painting

**BLUES & GREENS**, 13 Market Place, EH39 4JF, 01620 893 377

**WESTGATE GALLERY**, 39-41 Park, Findhorn, EH39 4AG, 01620 894 976

Paintings, limited edition prints, sculptures, ceramics & glass. Licensed gallery café

**BIRD IMAGES**, 60 Rhodes Park, EH39 5NA, 01620 890 780

Large Panoramic Art Photographs. Printed on Canvas. View on-line gallery or visitors by appointment

**KIRKPORTS GALLERY & LINDSEY ANTIQUES**, 49a Kirkports, EH39 4HN, 01620 894 114

Mainly Scottish 19th and early 20th C oils and watercolours

**ST ANDREW BLACKADDER CHURCH HALL**, St Andrew Street, EH39 4NU, 01620 895 233

**North Uist**  
TAIGH CHEARSABHAGH, Lochmaddy, Western Isles, HS6

# ArtWork

## Dundee – the pre-Bilbao stage



Above: reduced to rubble, the 'old' Dundee waterfront, pre-the arrival of the glittering V & A.

**Gràid Choinnich Kenneth Street Steòrnabhagh Stornoway Eilean Leòdhais Isle of Lewis**



Exhibitions ~ Events ~ Cinema  
Shop ~ Bar ~ Restaurant  
01851 703 307  
[www.lanntair.com](http://www.lanntair.com)

## TRADE COUNTER

Do you have a product or a service to offer artists or craft workers? These columns are read by an interested and informed readership.

**FIND OUT MORE:**  
T: 01436 672544  
[Eartwork@famedram.com](mailto:Eartwork@famedram.com)  
**WEB:**  
[www.artwork.co.uk](http://www.artwork.co.uk)



**dandelion designs & images gallery**  
stein waternish isle of skye  
original paintings, artist prints  
photographs, cards & crafts  
open 11 - 5 daily, march to october  
01470 592218  
[www.dandelion-designs.co.uk](http://www.dandelion-designs.co.uk)

**SCULPTURE WORKSHOP ALBERTINO COSTA SCULPTURES**  
MARBLES & OTHERS  
• Metal • Wood • Commission work  
Monday to Friday from 9.00am till 1.00pm  
Weekends by appointment  
07917482351  
Campmill School, Northdeesse Road, Murtle, Bieldside, AB15 9EP  
[www.greenglassgallery.com](http://www.greenglassgallery.com)

**Aberfeldy Gallery**  
7 September to 23 October 2013

**Family Connections**  
**Deborah Phillips and the late Douglas Phillips**

Together with a continuing mixed show plus pottery, jewellery, wooden objects and furniture

3 & 9 Kenmore Street  
Aberfeldy  
PH15 2HB  
01887 829129  
[www.aberfeldygallery.co.uk](http://www.aberfeldygallery.co.uk)

**dandelion designs & images gallery**  
stein waternish isle of skye  
original paintings, artist prints  
photographs, cards & crafts  
open 11 - 5 daily, march to october  
01470 592218  
[www.dandelion-designs.co.uk](http://www.dandelion-designs.co.uk)

**Visit: www.artwork.co.uk**

5AA, 01876 500293, Fax: 01876 500 240

**Northumberland**  
QUEEN'S HALL, Beaumont Street, Hexham, NE46 3LS, 01434 652 477

Visit website for full programme

**Until October 12**  
Paul Stangroom. The Whirly Abbey Series of Paintings.

**Until October 12**  
Landscape: Faith, Inspiration & Stitch.

**MARY ANN ROGERS**, West Woodburn, Hexham, NE48 2SE, 01434 270 216, [www.marogers.com](http://www.marogers.com), [info@marogers.com](mailto:info@marogers.com)

**PHOTOWORKSHOPS**, The Old School House, Fair Hill, Haltwhistle, NE49 9EJ, 01434 322 595

Craft centre with 4 studios - Visit for a unique gift. Dundee Studio Pottery

- Ceramist Duncan Hood (01721) 722 875. Woodworks by Bruce Prost - (01721) 724 442. Jewellery by Lynn Tindale - (01721) 720 112

**BELTANE STUDIOS**, Unit 8, Southpark Industrial Estate, EH45 9ED, 01721 724 888

**TRACQUAIR HOUSE**, Inverleithen, EH44 6PW, 01896 830 323, [www.tracquir.co.uk](http://www.tracquir.co.uk), [enquiries@tracquir.co.uk](mailto:enquiries@tracquir.co.uk)

**October 25 & 26 (Also November 8 & 2)**  
Hallowe'en at Traquir - Ghost Tours. A ghostly candlelit tour of Traquir bringing history to life

**DAWYCK BOTANIC GARDEN**, Stobo, EH45 9JU, 01721 760254

**Until November 30**  
Jeffrey Wilkinson. Nature At Its Best At Dawyck. Paintings

**CHapel STREET GALLERY**, 19 Chapel Street, Innerleithen, EH44 6HN, 01896 833 448, [www.chapelstreetgallery.co.uk](http://www.chapelstreetgallery.co.uk), [chapelstgellery@gmail.com](mailto:chapelstgellery@gmail.com)

New works by members of Royal Scottish Society of Artists in Watercolour: Also: affordable art

**SILKWOOD GALLERY**, 6 Newby Court, Stronness, KW16 3AA, 01856 850 209, Fax: 01856 851 462, [www.pierartscentre.com](http://www.pierartscentre.com)

**THE GALLERY**, Pierowall, Westray, KW17 2BZ, 018187 677 770

Offering: Contemporary art of Westray

**WATERFRONT GALLERY**, 128 Victoria Street, Stromness, KW16 3BU, 01856 500 644, [www.waterfrontgallery.co.uk](http://www.waterfrontgallery.co.uk)

In the shop: Orkney silver, pottery, knitwear and gifts. In the Back Room Local paintings, prints and designer crafts

**September 24 - October 10**  
Mirran Hall. Acrylic paintings and hand-coloured monoprints

**YELLOWBIRD GALLERY**, Chocolate Cottage, Birsay, KW17 2LH, 01856 721 360

Celebration of birds through drawings, paintings and carving by sculptor John Thompson and artist Lesley Murdoch

**SHORELINES GALLERY & STUDIO**, Maitland Place, Finstown, Orkney Isles, KW17 2EQ, 01856 761142, [www.shorelinesgallery.com](http://www.shorelinesgallery.com)

Original gallery & shop selling prints & watercolours by Orkney artist Jane Glue

**THE LOFT GALLERY**, 32 Margarets Hoop, KW17 2SL

**NORTHGATE STUDIO**, Stromness, KW16 3BH, 01856 850 671

Specialist tapestry studio and gallery in the historic harbour of Stromness

**Oxford**  
MODERN ART OXFORD, 30 Pembroke Street, OX1 1BP, 01865 722 733

**ASHMOLEAN MUSEUM**, Beaumont Street, OX1 2TA, 01865 278 000, Fax: 01865 278018

**Until September 29**  
Nilufar Izadi. Camera Obscura

Combines architecture, physics and art to create camera obscura installations in different forms and locations around the world

**JARDINE GALLERY & WORKSHOP**, 45 New Row, PH1 5QA, 01738 621 836

**MARIE FINART**, Imlrie House, Back Street, Bridge of Earn, PH2 9AE, 01738 812 784

Recent paintings by Ian C Imrie

**PERTH THEATRE**, 185 High Street, PH1 5JW, 01738 621 031

Call for full listings

**PERTH CONCERT HALL**, Mill Street, PH1 5HZ, 01738 621 031

September 9 - 14

September 18 - October 5

Macbeth

**THE BIRNAN INSTITUTE**, Station Road, Birnam, Dundee, PH8 0DS, 01350 722 674

**Until September 30**  
Marlene Patrick. It's All About Colour.

**October 2 - 31**  
The Scottish Felters - Felts of Fancy. Featuring the latest work of the Scottish Felters - wearable items, pictures and objects

**L CHRISTIE CAMPBELL FINE**

**GALLERY**, Chambers Induction, Rait, PH2 7RT, 01821 670 379

**Until November 2**  
Earl Haig. Jake Harvey, William Johnson, Renat Klein, David Michie & John McNairn. The Border Boys. Paintings and sculpture by celebrated artists and artists based in the Scottish Borders

**THE CAIRNS GALLERY**, 72 High Street, EH45 8SW, 01721 729441, Fax: 01721 729488

**MCHARDY'S ART & FRAMING**, 1 Biggisonne, EH45 8HS, 01721 720 246, [www.mchardysframing.co.uk](http://www.mchardysframing.co.uk), [McHardysFraming@tiscali.co.uk](mailto:McHardysFraming@tiscali.co.uk)

**PHOTOWORKSHOPS**, The Old School House, Fair Hill, Haltwhistle, NE49 9EJ, 01434 322 595

Craft centre with 4 studios - Visit for a unique gift. Dundee Studio Pottery

- Ceramist Duncan Hood (01721) 722 875. Woodworks by Bruce Prost - (01721) 724 442. Jewellery by Lynn Tindale - (01721) 720 112

**BELTANE STUDIOS**, Unit 8, Southpark Industrial Estate, EH45 9ED, 01721 724 888

**TRACQUAIR HOUSE**, Inverleithen, EH44 6PW, 01896 830 323, [www.tracquir.co.uk](http://www.tracquir.co.uk), [enquiries@tracquir.co.uk](mailto:enquiries@tracquir.co.uk)

**October 25 & 26 (Also November 8 & 2)**  
Hallowe'en at Traquir - Ghost Tours. A ghostly candlelit tour of Traquir bringing history to life

**DAWYCK BOTANIC GARDEN**, Stobo, EH45 9JU, 01721 760254

**Until November 30**  
Jeffrey Wilkinson. Nature At Its Best At Dawyck. Paintings

**CHapel STREET GALLERY**, 19 Chapel Street, Innerleithen, EH44 6HN, 01896 833 448, [www.chapelstreetgallery.co.uk](http://www.chapelstreetgallery.co.uk), [chapelstgellery@gmail.com](mailto:chapelstgellery@gmail.com)

New works by members of Royal Scottish Society of Artists in Watercolour: Also: affordable art

**SILKWOOD GALLERY**, 6 Newby Court, Stronness, KW16 3AA, 01856 850 209, Fax: 01856 851 462, [www.pierartscentre.com](http://www.pierartscentre.com)

**THE GALLERY**, Pierowall, Westray, KW17 2BZ, 018187 677 770

Offering: Contemporary art of Westray

**WATERFRONT GALLERY**, 128 Victoria Street, Stromness, KW16 3BU, 01856 500 644, [www.waterfrontgallery.co.uk](http://www.waterfrontgallery.co.uk)

In the shop: Orkney silver, pottery, knitwear and gifts. In the Back Room Local paintings, prints and designer crafts

**September 24 - October 10**  
Mirran Hall. Acrylic paintings and hand-coloured monoprints

**YELLOWBIRD GALLERY**, Chocolate Cottage, Birsay, KW17 2LH, 01856 721 360

Celebration of birds through drawings, paintings and carving by sculptor John Thompson and artist Lesley Murdoch

**SHORELINES GALLERY & STUDIO**, Maitland Place, Finstown, Orkney Isles, KW17 2EQ, 01856 761142, [www.shorelinesgallery.com](http://www.shorelinesgallery.com)

Original gallery & shop selling prints & watercolours by Orkney artist Jane Glue

**THE LOFT GALLERY**, 32 Margarets Hoop, KW17 2SL

**NORTHGATE STUDIO**, Stromness, KW16 3BH, 01856 850 671

Specialist tapestry studio and gallery in the historic harbour of Stromness

**Oxford**  
MODERN ART OXFORD, 30 Pembroke Street, OX1 1BP, 01865 722 733

**ASHMOLEAN MUSEUM**, Beaumont Street, OX1 2TA, 01865 278 000, Fax: 01865 278018

**Until September 29**  
Nilufar Izadi. Camera Obscura

Combines architecture, physics and art to create camera obscura installations in different forms and locations around the world

**JARDINE GALLERY & WORKSHOP**, 45 New Row, PH1 5QA, 01738 621 836

**MARIE FINART**, Imlrie House, Back Street, Bridge of Earn, PH2 9AE, 01738 812 784

Recent paintings by Ian C Imrie

**PERTH THEATRE**, 185 High Street, PH1 5JW, 01738 621 031

September 9 - 14

September 18 - October 5

Macbeth

**THE BIRNAN INSTITUTE**, Station Road, Birnam, Dundee, PH8 0DS, 01350 722 674

**Until September 30**  
Marlene Patrick. It's All About Colour.

**October 2 - 31**  
The Scottish Felters - Felts of Fancy. Featuring the latest work of the Scottish Felters - wearable items, pictures and objects

**L CHRISTIE CAMPBELL FINE**

**Visit: www.artwork.co.uk**

**ART**, Rait Village Antique Centre, Rait, PH2 7RT, 01821 670 379

Ongoing exhibition of 19th-21st century oils, watercolours, etchings and prints, jewellery by Chris Lewis and Assassin

**THE RUTHVEN GALLERY**, 90 High Street, Auchterarder, PH13 1BJ, 01764 664 233

Contemporary Art and Framing

**BLAIR CASTLE**, Blair Castle, Blair Atholl, Pitlochry, PH18 5TL, 01796 481207, Fax: 01796 481487

**Until October 20**  
Atholl Estates Ranger Activities

**THE BARN GALLERY**, The Bield, Blacktruburn, Tibbermore, PH1 1PY, 01968 677854

Check website for more information

**PERTSHIRE AGRICULTURAL SOCIETY**, 26 York Place, PH2 8EH, 01738 623 780, Fax: 01738 621 206, [www.pertshow.co.uk](http://www.pertshow.co.uk), [secretary@pertshow.co.uk](mailto:secretary@pertshow.co.uk)

**THE PERTSHIRE ART ASSOCIATION**, 5 Western Avenue, PH1 1NY, 01738 445886

**PERTSHIRE OPEN STUDIOS**, Kinross, KY13, 01738 477 834

**Until September 15**  
Claire Harkness. Perthshire Open Studios 2013. Showcase - Painting in watercolour

**THE ATHOLL GALLERY**, 6 Atholl Street, Dunkeld, PH8 0AR, 01350 728 855

**FORTINGALL ART**, Molteno Hall, (8 miles W of Aberfeldy off B846), Aberfeldy, PH15 2LJ, 01887 830 254, Fax: 01887 830 265, [www.fortingallart.co.uk](http://www.fortingallart.co.uk)

**BONHOGA GALLERY**, Weisdale Mill, Weisdale, ZE2 9LW, 01595 830 400

**VAILA FINE ART**, 61 Commercial Street, Lerwick, ZE1 0US, 01595 693734

**St Andrews**  
FIFE CONTEMPORARY ART AND CRAFT (FCA&C), Town Hall, Queen's Gardens, KY16 9AD, 01334 474 610, Fax: 01334 479 880, [www.fcaec.co.uk](http://www.fcaec.co.uk)

**September 14**  
FCA&C Artists' Forum 2013

Roths Halls, Glenrothes, KY7 5NX, registration from 10am

**FCA&C ST ANDREWS MUSEUM**, Kilmarnock Park, Dundee Road, KY16 9TA, 01334 659 380

**December 14 - March 9, 2014**  
Added Value?

# Professional Packing & Worldwide Delivery



TRUST US TO HANDLE WITH CARE

At Mail Boxes Etc. we specialise in logistics for fine art, antiques and collectables. Whatever it is, and wherever you want it to go in the UK or around the world, you can relax in the knowledge that we'll get it there safely.

- Over 130 centres across the UK and Ireland
  - Expert packing
  - Customs paperwork and expert advice
  - Collection service
- Choose from UPS, FedEx, DHL and Parcelforce Worldwide
- Unique compensation cover
- Tracking and proof of delivery

**For details of your nearest centre just call us on 0800 623 123 or visit [www.mbe.co.uk/the\\_auction\\_room](http://www.mbe.co.uk/the_auction_room) and we'll do the rest**



**MAIL BOXES ETC.®**

mbe.co.uk  
0800 623 123