

The North's **Original** Free Arts Newspaper + [www.artwork.co.uk](http://www.artwork.co.uk)

# artWORK

Number 186 Pick up your own FREE copy and find out what's really happening in the arts November/December 2014



**The Storyteller, by Neil MacPherson, one of the paintings  
in the Winter Exhibition at Brown's Gallery, Tain**

**Inside: Books and art together**





Stunning original art, beautiful limited edition prints and individually hand crafted gifts.

Situated in the picturesque market town of Peebles.



FRAMING STUDIO  
ARTISTS & CRAFT MAKERS GALLERY

1 Biggiesknowe, Peebles | [tweedart.co.uk](http://tweedart.co.uk)



# Braemar Gallery

[www.braemargallery.co.uk](http://www.braemargallery.co.uk)

FINE ART : PRINTS : CERAMICS  
JEWELLERY : ARTISTS MATERIALS  
013397 41681



## WINTER PROGRAMME 2014 / 2015

**RUTH NICOL, 'THREE RIVERS MEET'**  
Until 29 November 2014

Ruth Nicol, inspired by Alexander Moffat's 1980's painting 'Poets' Pub', investigates the landscapes of the seven great Scottish poets; Hugh MacDiarmid, Edwin Morgan, Norman MacCaig, Sorley MacLean, George Mackay Brown, Robert Garioch and Iain Crichton Smith.

**WINTER EXHIBITION**  
**Private View Friday 5 December 5 - 7pm**  
**Exhibition runs until 24 January 2015**

A wide selection of small works by a range of artists with links to the gallery including elected RGIs and RGI artist members.

**LYNDSEY REDFORD**  
**30 January - 14 February 2015**

A solo exhibition of new paintings by this emerging artist whose interest lies in observing the interaction between humans and animals in the landscape.

RGI KELLY GALLERY 118 DOUGLAS STREET GLASGOW G2 4ET  
Tel: 0141 248 6386 [www.royalglasgowinstitute.org](http://www.royalglasgowinstitute.org)

OPEN MON - SAT 10AM - 5PM

Company Limited by Guarantee. Registered in Scotland No. 912. Scottish Charity No. SC014650



EDINBURGH ART SHOP  
129 Lauriston Place  
Tollcross, EH3 9JN

[www.EdinburghArtShop.com](http://www.EdinburghArtShop.com)  
0131 229 1809





9 Nov to 22 Dec  
**CHRISTMAS EXHIBITION**  
TOLQUHON  
by Tarves, Ellon,  
Aberdeenshire  
Tel: 01651 842343

[www.tolquhon-gallery.co.uk](http://www.tolquhon-gallery.co.uk)



**CHANGIN' SCOTLAND**  
28 - 29 November  
An exciting social & cultural weekend  
Tel: 01854 612103  
e: [stay@theceilidhplace.com](mailto:stay@theceilidhplace.com)  
[www.theceilidhplace.com](http://www.theceilidhplace.com)

**BISCUIT CAFE  
CULROSS  
POTTERY & GALLERY**

**ART, POTTERY & CHRISTMAS GIFTS**

Sandhaven House, Sandhaven,  
Culross, Fife KY12 8JG  
01383 882176/882050  
Open Daily 10 - 5  
[www.culrosspottery.com](http://www.culrosspottery.com)



# CASS ART GLASGOW NOW OPEN

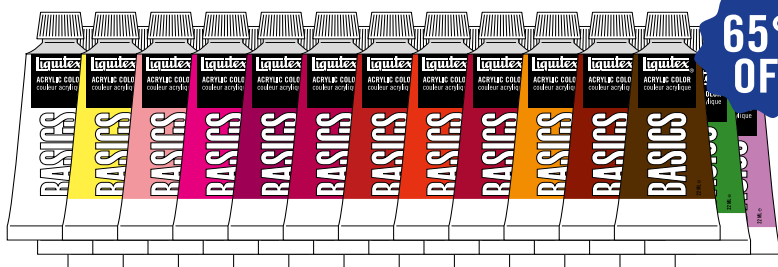


**WE'RE CONFIDENT OUR PRICES CAN'T BE BEATEN  
FIND A LOWER PRICE & WE WILL MATCH IT**

**WE GUARANTEE YOU THE BEST PRICES AROUND. IF YOU FIND AN IDENTICAL ITEM FROM  
CASS ART CHEAPER IN ANOTHER STORE OR ONLINE IN THE UK, TELL US AND WE WILL  
MATCH IT OR REFUND THE DIFFERENCE.\***

\*VISIT [WWW.CASSART.CO.UK](http://WWW.CASSART.CO.UK) FOR FULL TERMS AND CONDITIONS.





**65% OFF**

**£19.95** RRP £60.00  
LIQUITEX  
BASICS ACRYLIC 22ML  
ASSORTED COLOURS SET OF 48



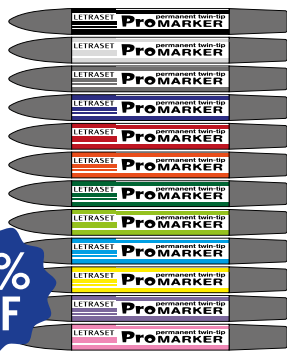
**65% OFF**

**£19.95** RRP £59.99  
WINSOR & NEWTON  
COTMAN WATERCOLOUR HALF PAN  
STUDIO SET OF 36  
CASS EXCLUSIVE



**65% OFF**

**£12.95** RRP £42.29  
CASS ART  
JUMBO WATERCOLOUR GUMMED PAPER PAD  
50 SHEETS 300GSM



**55% OFF**

**£12.95** RRP £30.00  
LETRASET  
PRO MARKER SET 1 ASSORTED COLOURS  
SET OF 12

**63-67 QUEEN STREET  
GLASGOW G1 3EN  
[CASSART.CO.UK](http://CASSART.CO.UK)**





# The

## Aberdeen

**ABERDEEN ART GALLERY & MUSEUM.** Schoohill, AB10 1FQ, 01224 561 700, Fax: 01224 01561 360 118, [www.aagm.co.uk](http://www.aagm.co.uk), [info@aagm.co.uk](mailto:info@aagm.co.uk)  
Unitil November 29  
Marion Patterson's Medals: Courageous Rescue in War-time Aberdeen  
**ABERDEEN MARITIME MUSEUM.** Shiprow, AB11 5BY, 01224 337700, Fax: 01224 213066  
Unitil November 29  
Marion Patterson's Medals: Courageous Rescue in War-time Aberdeen  
**ABERDEEN ARTS CENTRE.** 33 King Street, AB24 5AA, 01224 635 208, [www.aberdeenarts.org.uk](http://www.aberdeenarts.org.uk)  
November 18 - December 24  
Christmas Exhibition.  
**THE ART GALLERY.** Grampian Hospitals Art Trust, Aberdeen Royal Infirmary, Foresterhill, AB25 2ZN, 01224 552 429  
**GALLERY HEINZEL.** 24 Thistle Street, AB10 1XD, 01224 625 629, [www.gallery-heinzel.com](http://www.gallery-heinzel.com)  
November 15 - February 28 2015  
Winter Exhibition.  
**HOLBURN GALLERY.** 83 Holburn Street, AB10 6BQ, 01224 596 617  
Limited edition prints by many of Gallery Heinzel's artists  
**ROSIES.** 45-49 Holburn Street, AB10 6BR, 01224 577 325  
Crafts, art and gifts also framing  
**PEACOCK VISUAL ARTS.** 21 Castle Street, AB11 5BQ, 01224 639 539, [www.peacockvisualarts.co.uk](http://www.peacockvisualarts.co.uk)  
**RENDEZVOUS GALLERY.** 100 Forest Avenue, AB15 4TL, 01224 325 242  
**PROVOST SCENE'S HOUSE.** Guestrow, (between Broad Street and Flourmill Lane), AB10 1AS, 01224 641 086, Fax: 01224 632 133  
**THE TOLBOOTH MUSEUM.** Castle Street, AB10 1EX, 01224 621 167, Fax: 01224 523 666, [www.aagm.co.uk](http://www.aagm.co.uk), [info@aagm.co.uk](mailto:info@aagm.co.uk)  
Unitil January 31 2015  
Guestrow  
**CLAREMONT STUDIO.** 66, Claremont Street, AB10 6QY, 01224 596 999  
**THE NICOLE PORTER GALLERY.** 88 King Street, AB24 5BA, 01224 566 477, [nicole@nicoleporter.co.uk](mailto:nicole@nicoleporter.co.uk)  
**MARTIN R. NELSON.** Cowden Studio, Cowden Farm, Drumlithie, 01569 740240, [www.martinnelson.com](http://www.martinnelson.com), [martin@martinnelson.com](mailto:martin@martinnelson.com)  
**OLAND GLASS GALLERY AND WORKSHOP.** 88 Holburn Street, AB10 6BY  
**Aberdeenshire**  
**BRAEMAR GALLERY.** Mar Road, Braemar, AB35 5YL, 01339 741 681, [www.braemargallery.co.uk](http://www.braemargallery.co.uk), [info@braemargallery.co.uk](mailto:info@braemargallery.co.uk)  
Oil paintings, watercolours, etchings, engravings, sculpture, jewellery and cards  
**THE BUTTERWORTH GALLERY.** Ballaglio, Near Aboyne, AB34 5DP, 01339 886 104  
Paintings and prints by Howard Butterworth and daughter Mary  
**LARKS GALLERY.** 10 Braemar Road, Ballater, AB35 5RL, 01339 755 888  
Paintings, sculpture, ceramics, glass, textiles, jewellery and photography  
**CRANNACH COFFEE SHOP & GALLERY.** Cambus O'May, Ballater, AB35 5SD, 01339 755 126  
Food, coffee and Scottish art, craft and design  
**LANG BYRE GALLERY.** Woodend Barn Arts Centre, Burn O'Bennie, Banchory, AB31 5QA, 01330 825 431, [www.woodendbarn.co.uk](http://www.woodendbarn.co.uk), [mail@woodendbarn.co.uk](mailto:mail@woodendbarn.co.uk)  
Unitil November 19  
Alicia Bruce. Digging for Diamonds. Photographic portraits of people and place in a rural setting  
**THE LOST GALLERY.** Aldachue, Strathdon, AB36 8UJ, 01975 651 287, Fax: 01975 651 287  
**MILTON ART GALLERY.** Milton of Crathes, Nr Banchory, AB31 5QH, 01330 844 664, [www.miltonart.com](http://www.miltonart.com), [info@miltonart.com](mailto:info@miltonart.com)  
Unitil February 22, 2015  
Milton Mixed Winter Show  
**STARFISH STUDIO.** 3 Anchor Lane, Johnshaven, 01224 01561 360 118, [www.starfishstudio.co.uk](http://www.starfishstudio.co.uk), [kate@starfishstudio.co.uk](mailto:kate@starfishstudio.co.uk)  
Original art and handmade ceramics, jewellery, glass, textiles  
**SYLLAVETHY GALLERY.** Syllavethy, Montgarrie, Aberfeldy, AB33 8AQ, 01975 562 272  
**TOLQUHON GALLERY.** Tolquhoun, Taryves, Ellon, AB41 7LP, 01651 842 343, [www.tolquhon-gallery.co.uk](http://www.tolquhon-gallery.co.uk)  
Unitil December 22  
Christmas Exhibition  
**THE MILL OF UDNY.** The Mill, Udney, Pitmedden, AB41 7QE, 01651 842 429  
December 4 & 5  
Christmas paintings, books and sweet smelling gifts  
**TOUCHED BY SCOTLAND.** Ryehill, Oyne, AB52 6QS, 01464 851 489, [www.touched-by-scotland.com](http://www.touched-by-scotland.com), [info@touchedby-scotland.com](mailto:info@touchedby-scotland.com)  
**INVERURIE MUSIC.** Benview Cottage, Chapel of Garioch, Inverurie, AB51 5HE, 01651 882274  
Check website for details  
**THE MUSEUM OF SCOTLAND.** Kinnaird Head, Fraserburgh, AB43 9DU, 01346 511 022  
Purpose-built museum with multi-screen technology. Scotland's first lighthouse, built 1781.  
**PETERHEAD MARITIME HERITAGE.** South Road, Peterhead, AB42 2UP, 01779 473000  
Experience Peterhead's maritime life past and present  
**RIVERSIDE GALLERY.** The Riverside Arts Centre, Ann Street, Stonehaven, AB39 2DA, 01569 763 931  
**NORTH EAST OPEN STUDIO.** DIOS, NEOS Coordinator, 107 Selbie Drive, Inverurie, AB51 3YB, 01467 702 122  
**ALBERTINO COSTA SCULPTURES.** Campbell School, Northdeeside Road, Bieldside, AB15 9EP, 07917 482351  
**INVERURIE TOWN HALL.** Market Place, Inverurie, AB51 3SN, 01467 621610  
**GALLERY AT FIFTY FIVE.** 55 Allardice Street, Stonehaven, AB39 2AB, 01569 785606, [www.galleryatfiftyfive.co.uk](http://www.galleryatfiftyfive.co.uk)  
From November 28  
Mixed winter exhibition  
**GALLERY.** 28 Garioch Shopping Centre, Constitution Street, Inverurie, AB51 4UY  
**HADDO HOUSE.** Methlick, Ellon, AB41 7EQ, [www.hhcos.org.uk](http://www.hhcos.org.uk)  
December 14 (and Saturday 20th)  
HHCOS Carol Concerts.  
**COWDEN STUDIO.** Cowden Farm, Drumlithie, AB39 3YN, 01569 740039, [www.cowdenstudio.com](http://www.cowdenstudio.com), [info@cowdenstudio.com](mailto:info@cowdenstudio.com)  
**COUNTRY FRAMES GALLERY.** Leslie, Insh, AB52 6PA, 01464 820389, [www.countryframes.co.uk](http://www.countryframes.co.uk)  
**ABERFELDY**  
**ABERFELDY GALLERY.** 9 Kenmore Street, PH15 2BL, 01887 829 129, [www.aberfeldygallery.co.uk](http://www.aberfeldygallery.co.uk)  
Unitil January 3, 2015  
Xmas Show. Continuous Mixed Show, paintings, pottery, woodwork, jewellery, cards and glass  
**WATERMILL GALLERY.** Mill Street, PH15 2BG, 01887 822 896, [www.aberfeldywatermill.com](http://www.aberfeldywatermill.com), [info@aberfeldywatermill.com](mailto:info@aberfeldywatermill.com)  
Unitil January 31, 2015  
Modern Print Masters. Prints by modern masters Picasso to Hepworth and Miro to Blackadder  
**KELTNEYBURN SMITHY AND GALLERY.** The Bothy Showroom, Keltneburn Street, Keltneburn, PH15 2LF, 01887 830 267  
Sculptures created by mother and daughter team, Morag and Heather Cumming  
**Aberlour**  
**STILL LIFE STUDIO.** High Street, AB38 9NX, 01340 871 457  
**Alloa**  
**THE GALLERY.** Gordon McFarlane, Watchcraigh, 41 Mill Street, FK10 1DW, 01259 723 303  
Work from Ochil Craft As-

[www.artwork.co.uk](http://www.artwork.co.uk)

# Well read in Grantown

BOOKMARK on the High Street in Grantown-on-Spey is a bookshop par excellence and its friendly, enthusiastic and extremely knowledgeable owner, Marjory Marshall, knows her stock inside out. The book you have heard about on the radio today is already in the window! Not much wonder she was shortlisted for a much coveted Bookshop of the Year Award in 1913 – and in two categories – Best Independent Bookshop Owner/Manager and Best Childrens' Independent Bookshop.

When she bought over the shop in 2007 Marjory wanted to make it as good a bookshop as is possible to be. How come such a passionate interest?

“I have read all my life, as the eldest of seven of a family it was my way of escaping,” she laughs. “I am not ‘selling’ so much as ‘talking’ books. It is my interest and joy in books – it is a serious habit!”

Isn't it the case, I suggest, that people are not reading anymore?

She disagrees: “They are reading, but it is always the same kind of book, which is sold along with tea towels, mugs and gifts – not that I have anything against tea towels,” she laughs again, as she does all the time.

While she talks, she is attending to constant queries from the stream of customers, old and young – booklovers as well as families with children looking for their favourite stories or to find out what's new. In this relatively small space Bookmark manages to stock a great selection of books for children of all ages as well as a carefully chosen selection of artists' materils.

In the space of half an hour, a recent incomer to the area has come in looking for a present for a friend who wants to learn about canoeing locally. In a flash, Marjory produces The River Spey Canoe Guide.

“I'll have two copies then, please.” Then a customer who comes in every week returns looking for his bag which he has laid down somewhere. Margory assures him that he did have it when he left the shop – perhaps the Co-op or the PO? She offers him a cup of coffee or does he need some cash?

Luckily it appears his wallet was not in the lost bag.

Also in the shop is a man who can't stop buying books, according to his wife. He is there again, though the wife has



said to Marjory “don't let him buy any more books, please, we've no more space.” This time he is with his wife – and she is looking like, well, ok, Christmas is coming.

And that is not the whole story by any means. There are the Book Clubs, three groups of ten people who meet up once a month, in the nearby Garth Hotel and in Glenlivet village hall.

Also held in the Garth are the Bookmark Events, most recent of which was over Hallowe'en, 'Dark Nights, Dark Deeds, Death in Grantown 2014.' Marjory tells how eleven authors came up to take part in what she terms “Grantown's own wee crime festival. When does a chill become a thrill? It is all very informal – I hate preciousness!”

The programme started in the morning and ended at 7.30 with 'crime and dine', a 3-course dinner and drinks with all the authors - 'Dress, Gothic appreciated, but not compulsory'

Another such event held this year was 'Walk on the Wild Side' – a day of talks by authors influenced by the natural world both in the Cairngorms and farther afield. Included were Ruary Mackenzie Dodds with his The Dragonfly Diaries, Linda Cracknell with Doubling Back and Sara Maitland with Gossip of the Forest. On another occasion a visit from the author Susan Fletcher resulted in sales of 600 copies of her book Witch Light

MW

Bookmark is at 34 High Street, Grantown on Spey, PH26 3EH [www.thebookmark.co.uk](http://www.thebookmark.co.uk)

# Guine

Angus

**THE MEFFAN.** 20 West High Street, Forfar, DD8 1BB, 01307 476 482, [www.angus.gov.uk/history/museums/meffan/exhibitions.htm](http://www.angus.gov.uk/history/museums/meffan/exhibitions.htm), the.meffan@angus.gov.uk  
November 15 - January 3 2015  
Winter Exhibition.

**THE CANVAS ART GALLERY.** 81 East High Street, Forfar, DD8 2EQ, 01307 465 715  
Originals, prints, quality picture framing. Unusual giftware and jewellery  
**KINBLETHMONT GALLERY.** Arbroath, DD11 4RW, 01241 830 756, [www.kinblethmontgallery.co.uk](http://www.kinblethmontgallery.co.uk), [kinblethmont@btinternet.com](mailto:kinblethmont@btinternet.com)  
**OATHLAW POTTERY & GALLERY.** Oathlaw, Forfar, DD8 3PQ, 01307 850 272  
**CHIEFS OF ANGUS SHOWCASE AND SHOP.** The Old Stable Block, House of Dun, Montrose, DD10 9LQ, 0174 810379, [www.craftsofangus.co.uk](http://www.craftsofangus.co.uk)  
Contemporary and Designer. Handcrafted Goods. House of Dun by Montrose

**SPRINGFIELD CREATIVE ARTS.** Dr. Fran Marquis, 4 Springfield Terrace, Arbroath, DD11 1EL, 01241 439 714, [www.franmarquis.co.uk](http://www.franmarquis.co.uk), [info@franmarquis.co.uk](mailto:info@franmarquis.co.uk)  
Monthly throughout the year  
Ceramics Weekends in Arbroath.

**November 29 - December 1**  
AOS Winter Trail.  
**ARBROATH LIBRARY.** The Riverside Arts Centre, Arbroath, DD11 1AH, 01241 872 248  
**MONTROSE MUSEUM.** Painters of Montrose, DD10 8HF, 01674 673232  
December 25 & 26 (and January 1 & 2 2015)  
Closed.

**HOSPITALFIELD, Centre for Art & Culture.** Arbroath, DD11 2NH, 01241 872 333, [www.hospitalfield.org.uk](http://www.hospitalfield.org.uk), [info@hospitalfield.org.uk](mailto:info@hospitalfield.org.uk)  
November 28 - 30  
Winter Season. Open weekends

**Argyll**  
**THE ARCHWAY.** 7 Union Street, Lochgilphead, PA31 8JS, 01546 606 894  
**STUDIO OF BARN ARGYLL.** Leac Na Ban, Tayvallich, Lochgilphead, PA31 8PF, 01546 870 310, [www.studio-barnargyll.co.uk](http://www.studio-barnargyll.co.uk), [hamiltonargyll@btinternet.com](mailto:hamiltonargyll@btinternet.com)  
Seasonal exhibition of original art

**FINE STUDIOS - THE HIDDEN GALLERY.** Newton, Strachur, (off the A886), PA27 8DB, 01369 860 379, [www.fine-studios.com](http://www.fine-studios.com)  
Gallery of two Scottish artists  
Don McNeil & Jean Bell

**BLAIRMORE GALLERY & COFFEE SHOP.** Pierhead Blairmore, Dumoon, PA23 8TJ, 01369 840 253, [www.blairmoregallery.com](http://www.blairmoregallery.com)  
**JUNO DESIGN GALLERY.** 159 Argyll Street, Dumoon, PA23 7DD, 01369 707 767, [www.junogallery.com](http://www.junogallery.com)  
Unitil March 2015  
Colin Ian Christie, Brian Phillips, Angie Young & Angela Learoyd. Xmas Exhibition. Trollbeads, Tara King Craig, Stuart Herd, Rachel Drake, Nicola Morrison, Nick Hubbard, Niall McTeague, Lawrence Gibson, Kevin Hunter, Joanne Markwick, Jo Jo Jewellery, Glen Craig, Elizabeth Anne Donald, Deborah Phillips, David Morrison 1958 - 2011

**RESIPOLE STUDIOS.** Acharacle, PH36 4HX, 01967 431 506, [www.resipolestudios.co.uk](http://www.resipolestudios.co.uk)  
Open by appointment November - February  
**THE STABLE GALLERY.** Church Square, Inveraray, PA32 8TY, 01499 302 800  
Paintings, reproductions, greetings cards, exclusive post cards

**TIGHNABRUACH GALLERY.** Seaside House, Tighnabruach, PA21 2DR, 01700 811 681  
Unitil November 29  
Joel Moens de Hase.  
**IONA HERITAGE CENTRE.** Isle of Iona, PA76 6SJ, 01681 900 576

**Banff**  
**DUFF HOUSE COUNTRY GALLERY.** Duff House, AB45 3SX, 01261 818181, Fax: 01261 818900, [www.duffhouse.org.uk](http://www.duffhouse.org.uk), [duff.house@aberdeenshire.gov.uk](mailto:duff.house@aberdeenshire.gov.uk)  
Unitil January 2, 2015  
Ruth Nicol: Three Rivers Meet.  
**MEADOWLANDS GALLERY.** 83 North Castle Street, AB45 1JJ, 01261 818 535  
Douglas Heggie - New work

**IONA ABBEY.** Abbey & MacLeod Centres, Isle of Iona, PA76 6SN, 01681 700 404, Fax: 01681 700460  
Inspirational setting for services, Christian community  
**IONA GALLERY AND POTTERY.** Isle of Iona, PA76 6SW, 01681 700 439, [www.ionagallery.com](http://www.ionagallery.com), [enquiries@ionagallery.com](mailto:enquiries@ionagallery.com)  
**ORSAY.** 2 Stevenson Street, Oban, PA34 5NB, 01631 569 988  
Jewellery, ceramics, glass metal, textiles, wood lights, cards  
**INVERBEG GALLERIES.** Inverbeg, Argyll & Bute, Loch Lomond, G83 8PD, 01436 860 277  
**THE HARBOUR GALLERY.** Harbour Street, Tarbert, PA29 6UA, 01880 821070

**Ayr**  
**MACLAURIN ART GALLERY.** 140 Riddell Road, Monument Road, KA7 4NQ, 01292 443 708, [www.south-ayrshire.gov.uk/galleries/mac Laurin/](http://www.south-ayrshire.gov.uk/galleries/mac Laurin/)  
Unitil February 3, 2015  
Artists' Showcase. Six Artists for Christmas  
**ROZELLE HOUSE GALLERIES.** Rozelle Park, Monument Road, KA7 4NQ, 01292 443 708, [www.south-ayrshire.gov.uk/galleries/rozelehouse/](http://www.south-ayrshire.gov.uk/galleries/rozelehouse/)  
Unitil February 3, 2015  
Craft Shop - Range of unique crafts and gifts  
Ongoing  
Goudie Collection.

**COCKBURN GALLERY.** 41 High Street, Maybole, KA19 7AB, 01655 584 067  
**THE FRAMEWORK GALLERY.** 83 Portland Street, Troon, KA10 6QU, 01292 316 144  
Continuous mix of original paintings and printwork by a variety of artists  
**GLENBUCK ARTS.** Glenbuck, Arbroath, East Ayrshire, KA18 5SB, 01290 661 784  
Regular display of sculptures, paintings and hand woven wall pieces. Sculpture Garden by the loch  
**HARBOUR ARTS CENTRE.** 114-116 Harbour Street, Irvine, KA12 8EE, 01294 274 859, [www.harbourartscentre.com](http://www.harbourartscentre.com), [harbourarts@north-ayrshire.gov.uk](mailto:harbourarts@north-ayrshire.gov.uk)  
**MCKECHNIE INSTITUTE.** Dalrymple Street, Girvan, KA26 9AE, 01465 713 643, [www.south-ayrshire.gov.uk/galleries/mckechnie/](http://www.south-ayrshire.gov.uk/galleries/mckechnie/)  
Ongoing throughout 2014/15  
Ailsa Craig & Collections.  
Unitil January, 2015  
Robert the Bruce. Carrick Connections  
Unitil November 29  
Girvan Camera Club  
**THE WAVE CRAFT GALLERY.** 4 Knockcushan Street, Girvan, KA26 9AF, 01465 712 897  
Contemporary crafts, pottery classes  
**CRAFT TOWN SCOTLAND.** The Barony Centre, West Kilbride, KA23 9AW, 01294 829179, [www.crafttownscotland.org](http://www.crafttownscotland.org), [info@crafttownscotland.org](mailto:info@crafttownscotland.org)  
Unitil November 23  
Various artists. This Beloved Earth'. International Basketweavers' Exhibition.  
December 5 - March 1 2015  
Silver of the Stars + Millenium Collection. Silverware created by Scottish Silver-smiths  
**ART'N'JOY GALLERY.** AND PICTURE FRAMERS, 48 Hamilton Street, Saltcoats, North Ayrshire, KA51 5DS, 01294 472 222, [www.artnjoy.co.uk](http://www.artnjoy.co.uk)

**Banff**  
**DUFF HOUSE COUNTRY GALLERY.** Duff House, AB45 3SX, 01261 818181, Fax: 01261 818900, [www.duffhouse.org.uk](http://www.duffhouse.org.uk), [duff.house@aberdeenshire.gov.uk](mailto:duff.house@aberdeenshire.gov.uk)  
Unitil January 2, 2015  
Ruth Nicol: Three Rivers Meet.  
**MEADOWLANDS GALLERY.** 83 North Castle Street, AB45 1JJ, 01261 818 535  
Douglas Heggie - New work

Ring: 01436 672544

# Editorial Comment

ArtWork PO Box 3 AB41 9EA :: [artwork@famedram.com](mailto:artwork@famedram.com)

## A star is still born

SORRY, folks – well not really. The news that Creative Scotland have decided to withdraw their offer of a million pounds of 'ring-fenced' funding for the Star of Caledonia project at Gretna should be welcomed by all but the most dedicated lovers of pies in the sky.

Okay, Gretna offers a very tacky introduction to Scotland and no doubt the intentions of the promoters of this EX million scheme were of the most laudable.

The zany spiralling wire sculpture to be placed on a Charles Jencks mound of earth was frankly under-whelming, while the cost was pretty staggering.

A jolly press release claiming the structure would bring in initial revenue of '£16m.' in its first year, followed by some £5m annually thereafter was dutifully

reprinted by a largely uncritical media, without any credible explanation of quite how this was supposed to happen.

If Creative Scotland are being a bit cannier with their funds that will be no bad thing..

They could do worse than study the example being set by such truly heartening independent schemes as Summerhall (the old Dick Vet college re-born) and the former Government office block St Margaret's House, now a burgeoning arts complex with a six month waiting list for one of its studios. (see pages 8/9)

Neither of these have benefited from public funds – they are being made to work on their own terms thanks to the support of visionary backers.

Maybe it's time for Creative Scotland to actually “get creative?”

## ‘Guided buses’ go off the rails

BY THE TIME our next issue is out the franchise for running the East Coast rail service will have been taken away from the very successful State owned body that has been operating it for the past few years and handed either to a consortium headed up by Messrs Souter and Branson (Stagecoach and Virgin) or one in which French Railways have a major stake.

Already Scotland's Mickey Mouse rail set-up (described cruelly by one rail buff as 'guided buses') has been handed to a group in which Dutch Railways are dominant.

ScotRail's service, for the huffing puffing about time-keeping (which wasn't actually too bad) was, if one was to be honest, pathetic.

Passengers were shoved into what were basically city commuter trains for journeys of, in some cases, over a hundred miles with the most basic facilities.

Often they were overcrowded to the point of danger.

Though some of the Highland routes have been accorded world class tourist status, no attempt was made to capitalise on this – indeed the most clapped out of the tired diesel rail cars (ironically called ‘Sprinters’) were relegated to these lines.

All of this merely serves to

underline the truly shambolic condition of our railways ever since they were privatised.

Predictably Labour, who appear to have no credible policies on anything, are too frightened to commit to anything so bold as returning the system to public ownership (even partially) so they make an absurdly impractical offer to ‘allow competition’ from public bodies in future. What public bodies for goodness sake? The army? The fire service? The Inland Revenue?

East Coast offered a golden opportunity to return some sanity to our shaming rail service. There is an organisation there which has performed excellently.

Tory backwoodsmen cannot bear the idea of any nationally owned operation being a success, so they have been determined not to allow the current East Coast set up to put in a bid at any cost.

Their Lib Dem coalition partners, predictably, have no coherent policy so there is a very real chance that more State money will be poured into the coffers of Messrs Souter and Branson, so that the former can be a still better Nat than he already is, and the latter can spend yet more time sunning himself in the Caribbean.

Brilliant, innit?

## A Brave New World Service?

IN OUR LAST issue we devoted a few of these column inches to a ringing endorsement of the policies of the departing head of BBC Radio 3.

Praise could equally be heaped on the heads of those who provide us with the quite admirable World Service.

But choppy waters lie ahead for both services.

While none of us were looking, a review of the

corporation relieved the Foreign Office of responsibility for funding the World Service and landed the BBC with the extra £250m bill.

Result? – From having a copper bottomed guarantee of independence, the World Service now looks vulnerable.

There is plenty of evidence of dumbing down and tabloidisation on Radio 4, pray God this does not infect the WS.

# Game over: some design lessons from the Commonwealth Games

Richard Carr on the lessons designers can take away from the Games experience

THE SEMINAR Designing the Commonwealth Games, which was held in Glasgow's Lighthouse at the end of September, provided a unique opportunity to assess the successes (and difficulties) experienced by those responsible for putting on the summer's games

William Mitchell of 4C Design described the design of the Queen's Baton, which travelled around more than 60 countries before conveying a message from the Queen at the opening ceremony. A brainstorm involving more than 35 ‘stakeholders’ led to the decision NOT to design by committee but to concentrate on a design that had ‘message, culture and sport’ as the key denominators.

In the end, the elm handle, big enough to be held by two hands, was topped by a hollow latticework made from thousands of titanium particles and capped by a gemstone made from Scottish granite. This sealed the handwritten scroll containing the message itself.

Next came a Pop-Up shop and souvenirs designed by Graphical House, which deliberately avoided the sort of kitsch souvenirs found along Edinburgh's Royal Mile and instead opted for a ceramic jelly mould by Highland Stoneware, football scarves by Johnson's of Elgin, bronze models of the dancing teacakes featured in the opening ceremony, and luxury blankets costing £

600.

Gary Duncan described how The Empire Café was designed to recall the great Empire Exhibition of 1938 (also using the colour Empire Pink in a magazine), while the Briggit was the hub for a series of walks, lectures, and music and visual events. Graphical House also designed the Games catalogue.

When it came to some of the promotional material, IC Mobile Lab used overlaying techniques in the design of a brochure sponsored by IKEA, and linked ticket sales to mobile phones. These could also be used, when pointed at banners in the stadium, to receive various images, including those of the Games mascot.

In the opening ceremony, Arttan was responsible for designing the dancing teacakes – the outfits were made from lightweight foam – and dancing boat – whose shape was based on a CalMac ferry – the Gretna Green arch and placards recalling designs by Charles Rennie Mackintosh.

But, when working on the commission, Mike Kelt noted how it became a nightmare because the “customer” constantly “changed his mind” and “had little idea how to achieve what he

## NEW Whisky Trailer

why don't you check it out....  
[www.whiskytrailer.co.uk](http://www.whiskytrailer.co.uk)

**Inverclyde**  
council

**McLean**  
MUSEUM & ART GALLERY

**Absent Voices**  
8 artists inspired by  
sugar heritage  
24 Nov – 20 Dec, 2014  
15 Kelly Street, Greenock  
Open Mon-Sat 10.00-17.00  
Tel: 01475 715624

**SANDBANK STUDIO**

Wide range of  
original paintings  
by  
**Duncan  
Currie**  
Old Peir Rd  
Broadford Isle of Skye  
Tel: 01471 822011/064  
[www.duncancurrie.co.uk](http://www.duncancurrie.co.uk)

**CLIENCE STUDIO**  
Paintings by Angela Lawrence



Mostly Scottish Land & Seascapes:  
Originals, Prints, Art Gifts & Commissions  
Open 10.30 - 5 Mon-Sat.  
212 King St, Castle Douglas, DG7 1DS  
Tel 01556 504318 [www.cliencestudio.co.uk](http://www.cliencestudio.co.uk)

**artWORK**  
To Advertise  
Telephone:  
**01436  
672544**  
or visit  
[www.artwork.co.uk](http://www.artwork.co.uk)

**resipole studios**  
strontian, acharacle, argyll  
ph36 4hx 01967431506  
[www.resipolestudios.co.uk](http://www.resipolestudios.co.uk)

**Arts at  
Rozelle**



**ROZELLE HOUSE GALLER**



# The

**Banffshire**  
**PORTSOY MARBLE GAL-  
LERY & WORKSHOP**,  
Harbour, Shorehead, Portsoy,  
AB45 2PB, 01261 842 404  
Ever-changing ongoing  
display of pottery, Portsoy  
marble work, hand-knits,  
books and presents  
**TOMINTOUL MUSEUM &  
VISITOR CENTRE**, The  
Square, Tomintoul, AB37  
9ET, 01409 673 701  
**TOMINTOUL GALLERY**,  
82 Main Street, Tomintoul,  
Ballindalloch, AB37 9HA,  
01807 580 458  
Contemporary Batik pictures,  
art in different media. Prints,  
ceramics & crafts. Artist in  
Residence: Jane Lannagan

**Beaulieu**  
**KILMARCK GALLERY**,  
The Old Kilmarck Church,  
IV4 7AL, 01463 783 230  
**THE BEAULY GALLERY**,  
High Street, IV4 7BY,  
01463 783 508  
November & December  
The Three Square. Small  
square works. Plus original  
pieces by Clare Bliss, Fiona  
Matheson and Cyril and  
Hazel Reid  
November  
Winter Exhibition. Featur-  
ing local artists Christine  
O’Keefe, Fiona Matheson  
and Malcolm Spratt  
**AIRDE GALLERY**, House  
of Beaulieu Visitor Centre, Sta-  
tion Road, IV4 7EH, 01381  
621 133

**Berwick-upon-  
Tweed**  
**BERWICK GYMNASIUM  
ART GALLERY**, Berwick  
Barracks, The Parade, TD15  
1DG, 01289 304 535  
**NUMBER FOUR GAL-  
LERY**, Northfield Farm, St  
Abbs, Berwickshire, TD14  
5QF, 01890 771 111  
Contemporary work from  
artists and designer/makers  
from both sides of the Border  
**THE GRANARY GALLERY**,  
Dewar’s Lane, TD15 1HJ,  
01289 303 232  
**PAXTON HOUSE**, Paxton  
house, Paxton, TD15 1SZ

**Berwickshire**  
**TOM DAVIDSON GAL-  
LERY**, East Mayfield, High  
Street, Earlieston, TD4 6BU,  
01396 848 998  
Continuous work by Tom  
Davidson and work by artist  
Linda Lovatt  
**ALLAN’S MILL  
STEADING**, Allanton, Duns,  
TD11 3JX, 01890 818073

**Birmingham**  
**IKON GALLERY**, 1 Ozells  
Square, Brindleyplace, B1  
2HS, 0121 248 0708  
**BIRMINGHAM MUSEUM &  
ART GALLERY**, Chan-  
celorin Square, B3 3DH, 0121  
303 2834  
Until December 13  
Sound and Silence: Prayer  
and Contemplation. Big-  
ging together original film,  
photographs, testimony and  
personal artefacts, ‘Sound  
and Silence’  
Until January 11 2015  
Stephen Boyd. After the  
Goldrush.

**Borders**  
**FLAT CAT GALLERY**, 2  
Market Place, Lauder, TD2  
6SR, 01578 722 808, www.  
flatcatgallery.co.uk, flatcat-  
gallery@btconnect.com  
November  
General Exhibition. Catherine  
Rayner, Lesley McLaren, The  
Woodneuk, Alan Richmond,  
Rona Lee, Connie Martin,  
Helen Fay, Simon Griffiths &  
Michael Ewart  
**THE CHRISTOPHER  
BOYD GALLERY**, Old Gala  
House, Scott Crescent, Galas-  
hells, TD1 3JS  
**THE SCOTT GALLERY**,  
Hawick Museum, Wilton  
Lodge Park, Hawick, TD9  
7JL, 01750 20096  
**THE SMOKEHOUSE  
GALLERY**, St Eilas Place,  
Eyemouth, TD14 5HP, 018907  
52116, www.smokehousegal-  
lery.co.uk, info@smoke-  
housegallery.co.uk  
**KELSO POTTERY**, The  
Knives, 100 metres behind  
Kelso Abbey, Kelso, TD5  
7BH, 01573 224 027  
Mugs, jugs, bowls & ‘Time

# ArtWork



Mixed Media Tulips in Lustre Jar by Mary Galloway 43 x 38cm

**Glasgow Gallery**  
**CHRISTMAS  
EXHIBITION**  
starts  
Saturday 6 December  
A wide selection of  
contemporary and  
traditional paintings at  
affordable prices  
Open Tues - Fri 10.30 - 5 • Sat 10.30 - 1  
0141 333 1991 • mail@glasgow.com  
www.glasgowgallery.com

**artWORK  
2014  
Winter Issue**

**vas:t 2015**  
visual arts scotland:  
talking, thinking, testing,  
trying, transforming  
7 - 28 february 2015  
the royal scottish academy  
the mound  
edinburgh  
www.visualartsscotland.org

**McNAUGHTAN’S BOOKSHOP & GALLERY**  
3a & 4a Haddington Place  
(Leith Walk)  
Edinburgh EH4 4AE  
**November 18 – January 31  
CHRISTMAS EXHIBITION**  
http://www.mcnaughtansbookshop.com/  
Open Tuesdays-Saturdays 1100-1700

**JAMES WINNETT**  
Glasgow based artist James Winnett presents  
an exhibition of new works developed as part  
of his residency at the Forestry Commission’s  
Cuningar Loop site to the north of Rutherglen  
town centre on the banks of the river Clyde.  
**Supported by  
Creative Scotland**  
Thursday 6 to Sunday 30 November 2014  
10.00am to 8.00pm  
**FREE ADMISSION**  
East Kilbride Arts Centre, 51 - 53 Old Coach  
Road, East Kilbride, G74 4DU.  
Tel: 01355 261000

**Castle Douglas**  
**CLIENCE STUDIO**, 212  
King Street, DG7 1DS, 01556  
504318, www.clicienstudio.co.uk  
Gallery & studio of Angela  
Lawrence: changing displays  
of land & seascape paintings  
& prints, mostly Galloway  
& Western Isles. Art gifts.  
Commissions  
**DESIGNS GALLERY**, 179  
King St, DG7 1DZ, 01556  
504 552  
**A D LIVINGSTON & SONS**,  
183 King Street, DG7 1DZ,  
01556 504 234  
Furniture restorers’ work-  
shop, shop and gallery  
**THE MCGILL-DUNCAN  
GALLERY**, 231 King Street,  
DG7 1DT, 01556 502 468  
**ARTS OF ALBA**, 39/40  
Threave Terrace, DG7 1HG,  
01556 504 020, www.artsof-  
alba.com, KD@artsofalba.com  
Featuring the work of Freida  
Dyson, Sam Mullen and  
Sheila Muir  
**JANINA’S ART**, Mead-  
owview, Springholm, DG7  
3LP, 01556 650329, www.  
janinasart.co.uk, janina@  
janinasart.co.uk  
Still lifes, landscapes,  
portraits, figures, abstracts,  
experimental work in mixed  
media  
**THE GALLERY AT LAU-  
RIESTON**, Woodbank House,  
Laurieston, DG7 2PW, 01644  
450 235  
Contemporary and traditional  
Fine Art and Landscape im-  
ages of Galloway



**KKL BUILDING**  
www.kklbuilding.com  
ORDERLINE  
07748994617  
info@kklbuilding.com

# Guide

**ROYAL CORNWALL MU-  
SEUM**, River Street, Truro,  
TR1 2SJ, 01872 272 205, Fax:  
01872 240514  
**LEMON STREET GAL-  
LERY (LSG)**, 13 Lemon  
Street, Truro, TR1 2LS, 01872  
275 757  
November 15 - December 6  
Arturo Di Stefano. Wet into  
Wet.  
December 13 - February 2  
2015  
Winter Exhibition.  
Sutton Taylor. New Work.

**Crieff**  
**AITON FINE ARTS**, 63 King  
Street, PH7 3HR, 01764 655  
423, Fax: 01764 655 816  
Contemporary Scottish  
paintings and prints. Picture  
restorers and framers  
**THE STRATHEARN GAL-  
LERY**, 32 West High Street,  
PH7 4DL, 01764 656 100,  
www.strathearn-gallery.com,  
info@strathearn-gallery.com  
Until January 4 2015  
Good Cheer. Mixed show  
featuring the works of over  
50 artists

**Cumbria**  
**ABBOT HALL ART GAL-  
LERY**, Kendal, LA9 5AL,  
01539 722464, Fax: 01539  
722494  
Exhibition talks, holiday  
workshops, gallery book  
shop, coffee shop  
Until December 6  
Joe Colquhoun, Charlie  
Adlard and Ivan Petrus. The  
Great War in Comics.  
Until December 20  
Andy Goldsworthy, Marcus  
Coates, Olaf Breuning,  
Jeremy Deller and Laure  
Prouvost and more. The  
Nuisance of Landscape.  
Grizedale - The Sequel  
**BLACKWELL**, Bowness-  
on-Windermere, LA23 3JT,  
01539 446 139, Fax: 015394  
88480  
Until December 20  
Various artists. After Ford  
151  
Until December 31  
Charles Rennie Mackintosh,  
Talwin Morris, Jessie Marion  
King, Ernest Archibald Taylor  
and Margaret and Frances  
Macdonald. Glasgow Style:  
Arts & Crafts from 1890-  
1930.  
**BREWERY ARTS CENTRE**,  
Higgle, Kendal, LA9 4HE,  
01539 725 153  
Call for full listings.  
November 28 - 30  
Various artists. Christmas  
Craft Fair  
**EDEN ARTS**, 1 Sandgate,  
Penrith, CA11 7TP, 01768 899  
444, Fax: 01768 895920  
**PHINNEY POTTERY**, Car-  
gilehead House, Alston, CA9  
3NG, 01434 382 157  
Pottery & kiln work of  
ceramicist Peter Lascelles -  
please telephone first  
**RED BARN GALLERY**,  
Melkinton, Penrith, CA10  
2DR, 01931 212 767  
**ARCHBENT SPACE**, St  
Michael’s Church, Bongate,  
Appleby-in-Westmorland,  
CA16 6UR, 01768 352 221  
**MUSEUM OF LAKELAND  
LIFE**, Abbot Hall, Kirkland,  
Kendal, LA9 5AL, 01539 722  
464, Fax: 01539 722 494  
Until December 20  
Various artists. First World  
War Centenary: From Fells to  
Flanders.  
**WILLOWPOOL DESIGNS**,  
9 Weston House, Endmoor,  
Kendal, LA8 0HA, 01539 567  
056, Fax: 08701 248 924  
Willow work by Simone  
Sigan  
Until January 31 2015  
William Latham, Mutator 2.  
Includes interactive video  
works, drawings and prints  
**LAMB GALLERY**, Univer-  
sity of Dundee, Tower Build-  
ing, Nethergate, DD1 4HN,  
01382 385330  
Until December 13  
Derek Robertson. Between  
Tides: Riddles of Tentsmuir.  
**HANNAH MACLURE CEN-  
TRE**, University of Abertay,  
Top Floor, Abertay Student  
Centre, 1 - 3 Bell Street, DD1  
1HP, 01382 308 777  
**THE KRYSZYNA GAL-  
LERY**, 15A Nelson Street,  
DD1 2PN, 01382 322 522,  
www.kryszynagallery.com,  
kryszynart@gmail.com  
Drawings, Paintings and  
Prints  
**THE MCMANUS:  
DUNDEE’S ART GALLERY  
& MUSEUM**, Albert Square,  
Meadowside, DD1 1DA,  
01382 307 200  
Until January 4, 2015  
Various artists. A World to

Angus McDonald. India’s  
Disappearing Railways.  
Until November 23  
The Art of Remembering:  
Looks at how we have  
memorialised the First World  
War over the past 100 years  
November 29 - February 2  
2015  
Lake Artists Society Winter  
Exhibition 2014.  
**NENTHEAD MINES HER-  
ITAGE CENTRE**, Nenthead,  
Alston, CA9 3PD, 01434 382  
726, Fax: 01434 382043  
Guided valley trails, 1825  
planned Quaker village: N  
Pennines ‘Klondyke’. Lead  
Mines; Rampgill café  
**UPFRONT GALLERY AND  
COFFEE SHOP**, Nr Hutton-  
in-the-Forest, Lindale,  
Penrith, CA11 9TG, 01768  
484 538  
**THE WATERMILL**, Little  
Said, Penrith, CA10 1NN,  
01768 881 523, Fax: 01768  
881 047, www.organicmill.co.uk  
Nick Jones. Sacred Eden.  
New work  
**HIGH HEAD SCULPTURE  
VALLEY AND GALLERY**,  
High Head, Ivergill, Carlisle,  
CA4 0PJ, 01697 473 552  
November 15 & 16  
Winter Craft Fair  
Until January 4 2015  
Bettina Reiber: A Residency.  
Landscape paintings  
**KESWICK FILM FESTI-  
VAL**, The Lonsdale Alham-  
bra Cinema, St John’s Street,  
Keswick, CA12 5AG

**Dumfries**  
**GRACEFIELD ARTS  
CENTRE**, 28 Edinburgh  
Road, DQ1 1JQ, 01387 262  
084, www.artandcraftsouth-  
westscotland.com/index.  
php?page=gracefield  
Until November 15  
Dan Flavin. Work  
**OTTERSBURN GALLERY**,  
2A Nith Avenue, Dumfries,  
DG1 1EF, 01387 247128,  
www.ottersburn.com, otters-  
burn@ottersburn.com  
Until November 20  
The Solway House Artists.  
**WHITHORN VISITOR  
CENTRE**, 45 - 47 George  
Street, Whithorn, DG8 8NS,  
01988 500 508  
**THOMAS TOSH**, 19 East  
Morton Street & 55 Drum-  
lanrig, Dumfries, DG3  
5LZ, 01848 331 553, www.  
thomastosh.com, info@  
thomastosh.com  
Until November 15 - December 6  
Open Art Exhibition.

**Dundee**  
**DUNCAN OF JORDAN-  
STONE COLLEGE OF ART  
& DESIGN GALLERIES**,  
University of Dundee, 15  
Rathgalloway Road, DD1 1QJ,  
385 330, Fax: 01382 385 363,  
www.exhibitions.dundee.ac.uk,  
exhibitions@dundee.ac.uk  
Until December 13  
Anna Oppermann. Cotoneas-  
ter Horizontalis. Features Op-  
permann’s highly celebrated  
1984 ensemble Cotoneaster  
Horizontalis (antikommuni-  
kationsdesign)  
Until January 31 2015  
William Latham, Mutator 2.  
Includes interactive video  
works, drawings and prints  
**LAMB GALLERY**, Univer-  
sity of Dundee, Tower Build-  
ing, Nethergate, DD1 4HN,  
01382 385330  
Until December 13  
Derek Robertson. Between  
Tides: Riddles of Tentsmuir.  
**HANNAH MACLURE CEN-  
TRE**, University of Abertay,  
Top Floor, Abertay Student  
Centre, 1 - 3 Bell Street, DD1  
1HP, 01382 308 777  
**THE KRYSZYNA GAL-  
LERY**, 15A Nelson Street,  
DD1 2PN, 01382 322 522,  
www.kryszynagallery.com,  
kryszynart@gmail.com  
Drawings, Paintings and  
Prints  
**THE MCMANUS:  
DUNDEE’S ART GALLERY  
& MUSEUM**, Albert Square,  
Meadowside, DD1 1DA,  
01382 307 200  
Until January 4, 2015  
Various artists. A World to

## Home for an art – and a book – lover in Edinburgh

Frances Anderson steps down into the civilised world of McNaughtan’s

FOR THOSE OF YOU who still treasure the traditional experience of browsing for books first hand, and the thrill of discovering a copy of your favourite childhood book, an elusive first edition or a well-worn classic, then head to McNaughtan’s Bookshop, one of Edinburgh’s oldest and probably one of the longest established independent booksellers in Scotland.

Established in 1957, this second-hand and antiquarian bookshop on Leith Walk was founded by Major and Mrs McNaughtan on his retirement from the army, and continued to be run by Mrs McNaughtan after her husband’s death in 1972 until she retired and sold it to her assistant, Elizabeth Strong, in 1979.

With carefully selected titles and expert knowledge, the McNaughtan’s achieved an enviable reputation for an interesting and varied stock at reasonable prices, built up through hard work, a thrifty lifestyle, and an extensive knowledge of books on many subjects.

Since acquiring the business more than 30 years ago, Elizabeth Strong has striven to maintain this reputation, and continues to deal in a wide variety of areas including literature, children’s and illustrated books, history, travel and topography, and Scottish books.

Meeting her in McNaughtan’s and still going strong, Elizabeth discusses her 30 years in the business: “The bookshop has always been rewarding – I love buying books, looking at peoples’ collections, selecting what I know will interest my customers and particularly what I find of interest myself. It has always been a policy to buy what I know to be of interest and importance or find aesthetically pleasing rather than to look at the business purely commercially.”

Elizabeth admits that the book trade has greatly changed since 1979. “Since I bought the business from the co-founder in 1979 the book trade has changed very much. There are many more booksellers and some amateurs who now advertise their stock online, and colleagues in the trade often remark about the years they spent acquiring knowledge and expertise in the past which now seems to be available at the click of a mouse!

“Actually the mouse doesn’t always tell you how to apply the knowledge and I would argue that the years of experience are not wasted. It is the bookseller’s cry that ‘the best years have all gone by’ – true of each generation as the books which they used to be able to buy are no longer available or soar beyond the reach of their pockets. But other

books become sought after and people are still searching for elusive titles.

“Online sites have proved a leveller of prices as one discovers that books which may have been scarce in one area are readily available elsewhere. In the past you would perhaps find them by making extensive countryside or even international buying trips.

“The fact that so many people do their buying online means that we have far fewer visits from colleagues making these buying trips – the days of carrying carloads of parcels over to the local post office have gone. Subjects of interest also change, but this is where I find sticking to my instincts the most valuable guide. My predecessor ran a general bookshop as I do, but with a specific emphasis on children’s books. I kept this to an extent, but developed the art and architecture sections, reflecting my own interests.



Elizabeth Strong – at home among her books

by children in Parisian primary schools at about the time of the outbreak of World War I and as well as exquisitely embroidered samples it included miniature examples of nurses’ uniforms and all the things which might have been sent to soldiers at the front, including waterproof ‘sou’ westers and knee protectors, as well as the usual socks and scarves and mittens and tiny liberty bodices. The oldest book we have ever had was an incunabula: a book printed and published before 1500”.

Does she still believe there is a future for independent bookshops?

“I certainly think there is. Nothing beats seeing and handling a book before purchasing it. Also, in a bookshop, particularly a second-hand or antiquarian bookshop, there is the possibility of coming across something which you didn’t realise you wanted, but can’t resist!

“The books are organised in subjects, so you are likely to find other things in your subject area while you are looking for a specific title. I fear that the internet, and perhaps the computer generally, has changed the way people think, so that they look for the specific, rather than looking at a subject in a more open-minded way. I try to make the experience of visiting a bookshop, and now gallery, as pleasant as possible and enjoy helping customers find what they want”.



McNaughtan’s – a treasure trove of books and paintings in the heart of Edinburgh

McNaughtan’s also runs a gallery space exhibiting artists throughout the year. An additional challenge, Elizabeth states: “Running the gallery in conjunction with the bookshop has increased the workload to some extent, but has also added to the stimulus and pleasure we derive from the business (I have two part-time assistants). We enjoy the interaction with the artists exhibiting and as a result of the exhibitions many people have been delighted to discover the bookshop who didn’t know it before. Seeing new work is always exciting and it is lovely to see the space changing character with each fresh exhibition.

“We have shown a variety of artists, some mixed exhibitions and some one-man shows. The space is suited to one-man shows, but we have had very successful artist book exhibitions – the Artist Book Group were outstanding – and a textile exhibition – which have included several artists without seeming crowded.

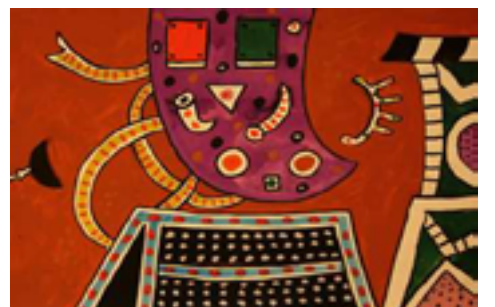
“Book and print related exhibitions sit particularly well in the gallery and we have been delighted to show much of the illustrator Angela Lemaire’s work. At present we are showing work by Jo McDonald, who has made beautiful and thoughtful work relating to and using the collection of books left to her by her late father.”

After 30 successful years, Elizabeth hopes to retire next year: “I’ve enjoyed my career but I am hoping to retire within the next year, and

**RSW** | THE ROYAL SCOTTISH  
SOCIETY OF PAINTERS  
IN WATERCOLOUR

Patron: HRH The Prince Charles, Duke of Rothesay

134<sup>th</sup> ANNUAL EXHIBITION



Cat’s Claw No 14 The Late Alan Davie CBE RA HRSW

Upper Galleries, RSA Building, Edinburgh

16 – 31 January 2015

Mon - Sat 10 – 5 Sun 12 - 5

CALL FOR ENTRIES

Receiving Day – 21 December 2014

Many awards including  
**Alexander Graham Munro  
Travel Award £3,000**

(artists under the age of 30 on 21 December 2014)

Please send schedule etc for the RSW 134th Annual Exhibition  
I enclose C5, 2<sup>nd</sup> Class SAE

Name .....

Address .....

.....

Return to: RSW, 2nd Floor, 5 Oswald Street  
Glasgow G1 4QR  
T: 0141 248 7411 F: 0141 221 0417  
W: www.rsw.org.uk  
Charity No : SC007247



Schedules cannot be downloaded from website

To Advertise...







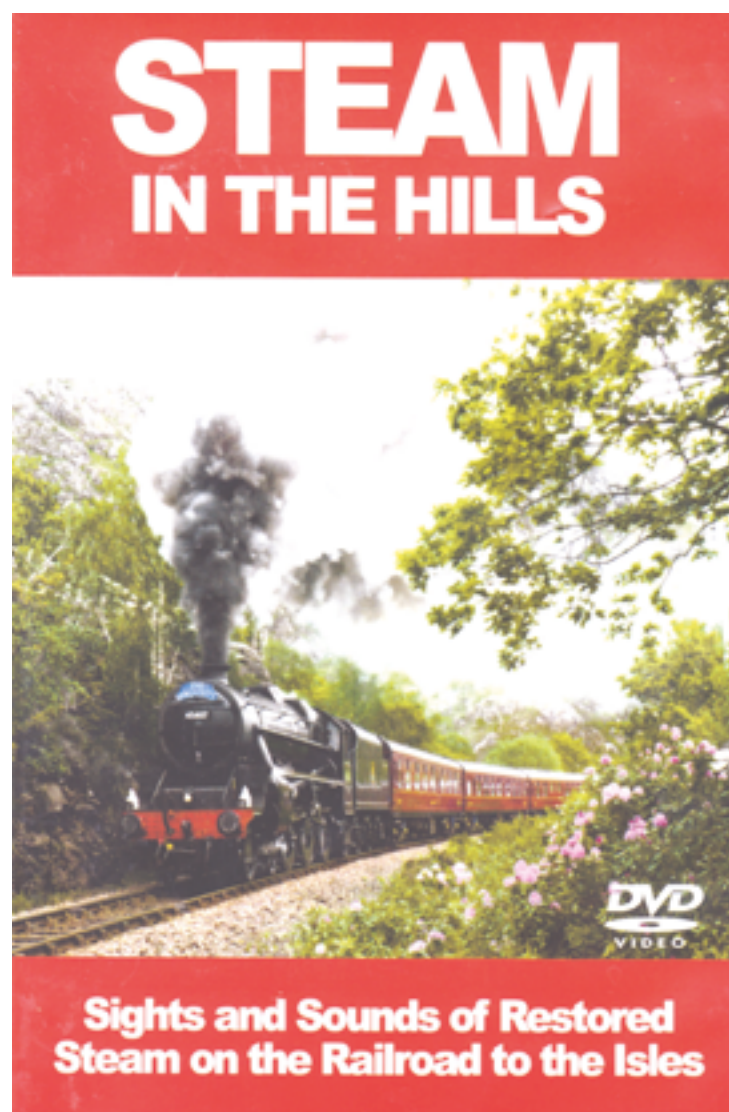








# TWO GREAT STEAM DVDS



**Sent post free\* for £15 for the two**

NAME.....

ADDRESS.....

.....POSTCODE.....

**Please make cheque payable to Famedram Ltd and post to PO Box 3 Ellon AB41 9EA**

**\* UK/overseas surface mail post paid. Overseas air mail rates on application.**

The North\*s **Original** Free Arts Newspaper + [www.artwork.co.uk](http://www.artwork.co.uk)

# artWORK

...is freely available throughout Scotland and into the North of England in arts outlets, but because of growing demand copies are often snapped up soon after publication. To be sure of seeing each copy as it comes out take out a subscription.

£10.00 (6 issues) ☐

£15.00 (12 issues) ☐

NAME.....

ADDRESS.....

.....POSTCODE.....

PLEASE SEND ME REGULAR COPIES OF **artWORK** to this address...Send  
(with cheque/PO/postage stamps) to:Famedram Publishers Ltd., PO Box 3, Ellon AB41 9EA Scotland