

The North\*s **Original** Free Arts Newspaper + [www.artwork.co.uk](http://www.artwork.co.uk)

# artWORK

Number 187 Pick up your own FREE copy and find out what's really happening in the arts March/April 2015



**George Birrell: Fishboxes and Lobster Pots, mixed media, 40x40cm, from his one-man show at Gallery Heinzl, Thistle Street, Aberdeen, March 21 - May 2**

**Inside: Jonathan Shearer paints en plein air :: Duncan Macmillan on Glasgow's £250,000 spending spree**

# The

## Aberdeen

**ABERDEEN ART GALLERY & MUSEUM**, Schoolhill, AB10 1FQ, 01224 523 700, Fax: 01224 632 133, [www.aagm.co.uk](http://www.aagm.co.uk), [info@aagm.co.uk](mailto:info@aagm.co.uk)

Closing for major refurbishment

**ABERDEEN MARITIME MUSEUM**, Shiprow, AB11 5BY, 01224 337700, Fax: 01224 213066

**ABERDEEN ARTS CENTRE**, 33 King Street, AB24 5AA, 01224 633 208, [www.act-aberdeen.org.uk](http://www.act-aberdeen.org.uk)

March 6 - 29  
Merylyn Riggs, Seating Red. Celebrates the last six years of International Women's Day

**GALLERY HEINZEL**, 24 Thistle Street, AB10 1XD, 01224 625 629, [www.galleryheinzel.com](http://www.galleryheinzel.com)

March 21 - May 2  
George Birrell

**HOLBURN GALLERY**, 83 Holburn Street, AB10 6BQ, 01224 596 617

Limited edition prints by many of Gallery Heinzel's artists

**ROSEBES**, 45-49 Holburn Street, AB10 6BR, 01224 577 325

Crafts, art and gifts also featuring

**PEACOCK VISUAL ARTS**, 21 Castle Street, AB11 5BQ, 01224 639 539, [www.peacockvisualarts.co.uk](http://www.peacockvisualarts.co.uk), [info@peacockvisualarts.co.uk](mailto:info@peacockvisualarts.co.uk)

**JOYCE TAYLOR STUDIO**, Bresside Croft, Hythie, Mintlaw, Peterhead, AB42 4HH, 01779 622989, [www.joycetaylor.co.uk](http://www.joycetaylor.co.uk), [info@joycetaylor.co.uk](mailto:info@joycetaylor.co.uk)

Until March 21  
Hiko Hulsing, In Motion Animation Festival 2015

**RENDEZVOUS GALLERY**, 100 Forrest Avenue, AB15 4TL, 01224 232 247

**PROVOST SKENE'S HOUSE**, Guestrow, (between Broad Street and Flourmill Lane), AB10 1AS, 01224 641 086, Fax: 01224 632 133

**THE TOLBOUTH MUSEUM**, Castle Street, AB10 1EX, 01224 621 167, Fax: 01224 523 666, [www.aagm.co.uk](http://www.aagm.co.uk), [info@aagm.co.uk](mailto:info@aagm.co.uk)

Until May 1  
The Seven Incorporated Trades of Aberdeen

**CLAREMONT STUDIO**, 66 Claremont Street, AB10 6QY, 01224 596 999

**THE NICOLE PORTER GALLERY**, 88 King Street, AB24 5BA, 01224 566 477, [www.nicoleporter.co.uk](http://www.nicoleporter.co.uk), [nicole@nicoleporter.co.uk](mailto:nicole@nicoleporter.co.uk)

**MARTIN R. NELSON**, Cowden Studio, Cowden Farm, Drumlinhill, 01569 740240, [www.martinrnelson.com](http://www.martinrnelson.com), [martin@martinrnelson.com](mailto:martin@martinrnelson.com)

**OIL AND GLASS GALLERY**, 88 Holburn Street, AB10 6BY

year. Check holiday opening times

**PETERHEAD MARITIME HERITAGE**, South Road, Peterhead, AB42 2UP, 01779 473000

Experience Peterhead's maritime history and present

**NORTH EAST OPEN STUDIOS**, NEOS Coordinator, 107 Selbie Drive, Inverurie, AB51 3VB, 01467 670 122

A non-profit organisation promoting Arts, Crafts and galleries in the North East of Scotland

**ALBERTINO COSTA SCULPTURES**, Campmill School, North-deeside Road, Bieldside, AB15 9EP, 07917 482351

**GALLERY AT FIFTY FIVE**, 55 Allardice Street, Stonehaven, AB39 2AB, 01569 785606, [www.galleryatfiftyfive.co.uk](http://www.galleryatfiftyfive.co.uk)

March 12 - April 18  
Ade Adesina, Prints - Lino cuts, Wood cuts & Etchings

**HADDO HOUSE**, Methlick, Ellon, AB41 7EQ, [www.hhcos.org.uk](http://www.hhcos.org.uk)

**COWDEN STUDIO**, Cowden Farm, Drumlinhill, AB39 3YN, 01569 740039, [www.cowdenstudio.com](http://www.cowdenstudio.com), [info@cowdenstudio.com](mailto:info@cowdenstudio.com)

**COUNTRY FRAMES GALLERY**, Leslie, Inch, AB52 6PA, 01464 606 894, [www.countryframes.co.uk](http://www.countryframes.co.uk)

Wide variety of art and craft work

**JOYCE TAYLOR STUDIO**, Bresside Croft, Hythie, Mintlaw, Peterhead, AB42 4HH, 01779 622989, [www.joycetaylor.co.uk](http://www.joycetaylor.co.uk), [info@joycetaylor.co.uk](mailto:info@joycetaylor.co.uk)

**Aberfeldy**

**ABERFELDY GALLERY**, 9 Kenmore Street, PH15 2BL, 01887 829 129, [www.aberfeldygallery.co.uk](http://www.aberfeldygallery.co.uk)

March 28 - May 8  
Spring exhibition

**WATERMILL GALLERY**, Mill Street, PH15 2BG, 01887 822 896, [www.aberfeldywatermill.com](http://www.aberfeldywatermill.com), [info@aberfeldywatermill.com](mailto:info@aberfeldywatermill.com)

Art Gallery, Bookshop, Coffee & Music Shop

March 21 - April 21  
Emily Hogarth, Scottish Folk Songs. Words framed with imagery inspired by the song

April 25 - June 16  
Sara Brennan, Jo Barker, Carol Dunbar, Kutsche Bolt. Thinking and Making - Four Artist Weavers

**KELTNEYBURN SMITHY AND GALLERY**, The Botly Showroom, Keltneyburn Smithy, Keltneyburn, PH15 2L, 01887 830 267

Sculptures created by mother and daughter team, Morag and Heather Cumming

**AUDREY SLORENCE GALLERY**, 6 The Square, PH15 2DD, 01887 829015

**Aberlour**

**STILL LIFE STUDIO**, High Street, AB38 9NX, 01340 871 457

**Alloa**

**THE GALLERY**, Gordon McFarlane, Watchmaker, 41 Mill Street, FK10 1DA, 01259 886 104

Paintings and prints by Howard Butterworth and daughter Mary

**LARKS GALLERY**, 10 Braemar Road, Ballater, AB35 8LJ, 01339 755 888

Paintings, sculpture, ceramics, glass, textiles, jewellery and photography

**CRANNACH COFFEE SHOP & GALLERY**, Cambus O'May, Ballater, AB35 5SD, 01339 755 120

Food, coffee and Scottish art, craft and design

**LANG BYRE GALLERY**, Woodend Barn Arts Centre, Burn O'Bennie, Banochry, AB31 5QA, 01330 825 431, [www.woodendbarn.co.uk](http://www.woodendbarn.co.uk), [mail@woodendbarn.co.uk](mailto:mail@woodendbarn.co.uk)

Call for more details

**THE LOST GALLERY**, Aldachuaie, Strathdon, AB36 8UJ, 01975 651 287, Fax: 01975 651 287

**MILTON ART GALLERY**, Milton of Crailes, N. Banochry, AB31 5QL, 01330 844 664, [www.miltonart.com](http://www.miltonart.com), [info@miltonart.com](mailto:info@miltonart.com)

**STARFISH STUDIO**, 3 Anchor Lane, Johnshaven, DD10 0EN, 01561 560 118, [www.starfishstudio.co.uk](http://www.starfishstudio.co.uk), [kate@starfishstudio.co.uk](mailto:kate@starfishstudio.co.uk)

Featuring paintings by Kate MacKenzie

**SYLVIA TAYLOR GALLERY**, Sylviasby, Montgarrich, Airdrie, AB33 8AQ, 01975 562 273

**TOUQUON GALLERY**, Touquon, Tarves, Ellon, AB41 7L, 01661 842 343, [www.touquon-gallery.co.uk](http://www.touquon-gallery.co.uk)

March 1 - April 14  
Spring exhibition

**TOUCHED BY SCOTLAND**, Ryehill, Onne, AB52 6QS, 01464 851 489, [www.touchedbyscotland.com](http://www.touchedbyscotland.com), [info@touchedbyscotland.com](mailto:info@touchedbyscotland.com)

**THE MUSEUM OF SCOTTISH LIGHTHOUSES**, Kinaird Head, Fraserburgh, AB43 9DL, 01346 511 022

Purpose-built museum with multi-screen technology. Scotland's first lighthouse, built 1781. Open all

**Aberdeenshire**

**BRAEMAR GALLERY**, Mar Road, Braemar, AB35 5YL, 01339 741 681, [www.braemargallery.co.uk](http://www.braemargallery.co.uk), [info@braemargallery.co.uk](mailto:info@braemargallery.co.uk)

Oil paintings, watercolours, etchings, engravings, sculpture, jewellery and cards

**THE BUTTERWORTH GALLERY**, Ballolgie, Near Aboyne, AB34 5DP, 01339 886 104

Paintings and prints by Howard Butterworth and daughter Mary

**LARKS GALLERY**, 10 Braemar Road, Ballater, AB35 8LJ, 01339 755 888

Paintings, sculpture, ceramics, glass, textiles, jewellery and photography

**CRANNACH COFFEE SHOP & GALLERY**, Cambus O'May, Ballater, AB35 5SD, 01339 755 120

Food, coffee and Scottish art, craft and design

**LANG BYRE GALLERY**, Woodend Barn Arts Centre, Burn O'Bennie, Banochry, AB31 5QA, 01330 825 431, [www.woodendbarn.co.uk](http://www.woodendbarn.co.uk), [mail@woodendbarn.co.uk](mailto:mail@woodendbarn.co.uk)

Call for more details

**THE LOST GALLERY**, Aldachuaie, Strathdon, AB36 8UJ, 01975 651 287, Fax: 01975 651 287

**MILTON ART GALLERY**, Milton of Crailes, N. Banochry, AB31 5QL, 01330 844 664, [www.miltonart.com](http://www.miltonart.com), [info@miltonart.com](mailto:info@miltonart.com)

**STARFISH STUDIO**, 3 Anchor Lane, Johnshaven, DD10 0EN, 01561 560 118, [www.starfishstudio.co.uk](http://www.starfishstudio.co.uk), [kate@starfishstudio.co.uk](mailto:kate@starfishstudio.co.uk)

Featuring paintings by Kate MacKenzie

**SYLVIA TAYLOR GALLERY**, Sylviasby, Montgarrich, Airdrie, AB33 8AQ, 01975 562 273

**TOUQUON GALLERY**, Touquon, Tarves, Ellon, AB41 7L, 01661 842 343, [www.touquon-gallery.co.uk](http://www.touquon-gallery.co.uk)

March 1 - April 14  
Spring exhibition

**TOUCHED BY SCOTLAND**, Ryehill, Onne, AB52 6QS, 01464 851 489, [www.touchedbyscotland.com](http://www.touchedbyscotland.com), [info@touchedbyscotland.com](mailto:info@touchedbyscotland.com)

**THE MUSEUM OF SCOTTISH LIGHTHOUSES**, Kinaird Head, Fraserburgh, AB43 9DL, 01346 511 022

Purpose-built museum with multi-screen technology. Scotland's first lighthouse, built 1781. Open all

**Aberdeenshire**

**BRAEMAR GALLERY**, Mar Road, Braemar, AB35 5YL, 01339 741 681, [www.braemargallery.co.uk](http://www.braemargallery.co.uk), [info@braemargallery.co.uk](mailto:info@braemargallery.co.uk)

Oil paintings, watercolours, etchings, engravings, sculpture, jewellery and cards

**THE BUTTERWORTH GALLERY**, Ballolgie, Near Aboyne, AB34 5DP, 01339 886 104

Paintings and prints by Howard Butterworth and daughter Mary

**LARKS GALLERY**, 10 Braemar Road, Ballater, AB35 8LJ, 01339 755 888

Paintings, sculpture, ceramics, glass, textiles, jewellery and photography

**CRANNACH COFFEE SHOP & GALLERY**, Cambus O'May, Ballater, AB35 5SD, 01339 755 120

Food, coffee and Scottish art, craft and design

**LANG BYRE GALLERY**, Woodend Barn Arts Centre, Burn O'Bennie, Banochry, AB31 5QA, 01330 825 431, [www.woodendbarn.co.uk](http://www.woodendbarn.co.uk), [mail@woodendbarn.co.uk](mailto:mail@woodendbarn.co.uk)

Call for more details

**THE LOST GALLERY**, Aldachuaie, Strathdon, AB36 8UJ, 01975 651 287, Fax: 01975 651 287

**MILTON ART GALLERY**, Milton of Crailes, N. Banochry, AB31 5QL, 01330 844 664, [www.miltonart.com](http://www.miltonart.com), [info@miltonart.com](mailto:info@miltonart.com)

**STARFISH STUDIO**, 3 Anchor Lane, Johnshaven, DD10 0EN, 01561 560 118, [www.starfishstudio.co.uk](http://www.starfishstudio.co.uk), [kate@starfishstudio.co.uk](mailto:kate@starfishstudio.co.uk)

Featuring paintings by Kate MacKenzie

**SYLVIA TAYLOR GALLERY**, Sylviasby, Montgarrich, Airdrie, AB33 8AQ, 01975 562 273

**TOUQUON GALLERY**, Touquon, Tarves, Ellon, AB41 7L, 01661 842 343, [www.touquon-gallery.co.uk](http://www.touquon-gallery.co.uk)

March 1 - April 14  
Spring exhibition

**TOUCHED BY SCOTLAND**, Ryehill, Onne, AB52 6QS, 01464 851 489, [www.touchedbyscotland.com](http://www.touchedbyscotland.com), [info@touchedbyscotland.com](mailto:info@touchedbyscotland.com)

**THE MUSEUM OF SCOTTISH LIGHTHOUSES**, Kinaird Head, Fraserburgh, AB43 9DL, 01346 511 022

Purpose-built museum with multi-screen technology. Scotland's first lighthouse, built 1781. Open all

**Angus**

**THE MEFFAN**, 20 West High Street, Forfar, DD8 1BB, 01307 476 482, [www.angus.gov.uk/mef-fan](http://www.angus.gov.uk/mef-fan), [the.meffan@angus.gov.uk](mailto:the.meffan@angus.gov.uk)

Until March 21  
Various artists. Decade 1970's - Flares, Hair & Platforms. Art-works, objects and photographs

**THE CANVAS ART GALLERY**, 81 East High Street, Forfar, DD8 2EQ, 01307 465 715

Originals, prints, quality picture framing, unusual giftware and jewellery

**KINLETHMONT GALLERY**, Arbroath, DD11 4KW, 01241 830 755, [www.kinlethmontgallery.co.uk](http://www.kinlethmontgallery.co.uk), [info@kinlethmont@btinternet.com](mailto:info@kinlethmont@btinternet.com)

**OATHLAW POTTERY & GALLERY**, Oathlaw, Forfar, DD8 3PQ, 01307 850 272

**CRAFTS OF ANGUS SHOW**, CASE AND SHOP, 14 The Square, Letham, DD8 2PZ, 01674 810379, [www.anguscrafts.co.uk](http://www.anguscrafts.co.uk)

Contemporary and Designer. Handcrafted Goods.

**SPRINGFIELD CREATIVE ARTS**, Dr. Fran Marquis, 41 Springfield Terrace, Arbroath, DD11 1EL, 01241 439 714, [www.franmarquis.co.uk](http://www.franmarquis.co.uk), [info@franmarquis.co.uk](mailto:info@franmarquis.co.uk)

Spring exhibition

**TOUCHED BY SCOTLAND**, Ryehill, Onne, AB52 6QS, 01464 851 489, [www.touchedbyscotland.com](http://www.touchedbyscotland.com), [info@touchedbyscotland.com](mailto:info@touchedbyscotland.com)

**THE MUSEUM OF SCOTTISH LIGHTHOUSES**, Kinaird Head, Fraserburgh, AB43 9DL, 01346 511 022

Purpose-built museum with multi-screen technology. Scotland's first lighthouse, built 1781. Open all

**open studios north-fife**

Sat 2nd, Sun 3rd & Mon 4th May 2015  
10am - 6pm each day

Over 70 of Fife's best artists, crafters & makers open their studios doors this May bank holiday weekend 2015.

[www.openstudiosfife.co.uk](http://www.openstudiosfife.co.uk)

**COUNTRY FRAMES GALLERY**

PICTURE FRAMING ■ GALLERY ■ GICLEE PRINTING

A wide variety of Art & Craftwork

LESLIE INSCH ABERDEENSHIRE AB52 6PA

Open: Tuesdays to Saturdays 10am - 5pm; Sundays 1pm - 5pm

[www.countryframesgallery.co.uk](http://www.countryframesgallery.co.uk)

# The new V & A – Holyrood-on-Tay?

Richard Carr asks if UNESCO's Design City award for Dundee is a bit premature



WITHIN the next few weeks work is to begin on Dundee's iconic building on the waterfront – the V&A Museum of Design by the Japanese architect, Kengo Kuma.

Conceived as a repeat on a much grander scale of Richard Murphy's conversion of a 1920s garage on Perth Road into Dundee Contemporary Arts (DCA), the V&A museum is intended to do what the DCA has failed to do, namely stage exhibitions and other events that will bring people flocking to Dundee.

The first thing to be said about the new building, originally designed to project out into the River Tay, is that it repeats

some of the things that dogged the Scottish Parliament in Edinburgh, namely uncontrolled rises in cost and – in the case of the Parliament – a design that is difficult and expensive to maintain. The museum, originally intended to cost £43 million, is now expected to cost almost double, even though the building has been pulled back from the river to reduce cost. The serrated nature of its exterior walls suggests it will also be both difficult and expensive to maintain. Why are running costs never included in a competition brief?

Also, like the Scottish Parliament, the history of the museum so far has been one of obfuscation if not deceit. Before the referendum, the Scottish government knew about the enormous rise in cost but kept the figure secret because the SNP feared it might lead to a scandal (which it is) and affect voting. This is yet another example of politicians failing to serve the public. MPs' expenses and claims to exert influence outside Parliament are par for the course.

However, what makes the saga of the museum even more extraordinary is that, on the assumption that it will be completed – and on the strength of work on medicine and computer games undertaken

**open studios north-fife**

Sat 2nd, Sun 3rd & Mon 4th May 2015  
10am - 6pm each day

Over 70 of Fife's best artists, crafters & makers open their studios doors this May bank holiday weekend 2015.

[www.openstudiosfife.co.uk](http://www.openstudiosfife.co.uk)

# Guide

DD11 1AH, 01241 872 248

**MONTROSE MUSEUM**, Panmure Place, Montrose, DD10 8HF, 01674 673232

**HOSPITAL FIELD**, Centre for Art & Culture, Arbroath, DD11 2NH, 01241 872 833, [www.hospitalfield.org.uk](http://www.hospitalfield.org.uk), [info@hospitalfield.org.uk](mailto:info@hospitalfield.org.uk)

**MONROSE LIBRARY EXHIBITION ROOM**, 214 High Street, Montrose, DD10 8PH, 01674 673256

**ABRROATH COMMUNITY CENTRE**, Marketgate, DD11 1AT

**Argyll**

**THE ARCHWAY**, 7 Union Street, Lochgilphead, PA31 8JS, 01546 606 894

**STUDIO BARN ARGYLL**, Leac Na Ban, Tayvallich, Lochgilphead, PA31 8PF, 01546 870 310, [www.studiobarnargyll.co.uk](http://www.studiobarnargyll.co.uk), [hamiltonargyll@btinternet.com](mailto:hamiltonargyll@btinternet.com)

Seasonal exhibition of original art

**FYNE STUDIOS - THE HIDDEN GALLERY**, Newton, Strachur, (off the A886), PA27 8DB, 01369 8560 379, [www.fyne-studios.com](http://www.fyne-studios.com)

Gallery of two Scottish artists Don McNeil & Jean Bell

**JUNO DESIGN GALLERY**, 159 Argyll Street, Dunoon, PA23 7DD, 01369 707 767, [www.juno-gallery.com](http://www.juno-gallery.com)

Until March 27  
Mixed exhibition

**RESPOLE STUDIOS**, Acharacle, PH36 4EX, 01967 431 506, [www.respolestudios.co.uk](http://www.respolestudios.co.uk)

April 3 - 30  
Various artists. The Spring Show

May 1 - 31  
Jim Wright, In the Eye of the Storm. Landscape and Seascapes

**THE STABLE GALLERY**, Church Square, Inverary, PA32 8TJ, 01499 302 800

Paintings, reproductions, greetings cards, exclusive post cards

**TIGHNABRUACH GALLERY**, Seaside House, Tighnabrauch, PA21 2DR, 01700 811 681

March 1 - 31  
Kevin Fleming. Spring in Argyll

April 1 - 30  
Sandra Vick, Jan Nelson, Amanda Clark and Mary Taylor. Where the Wild Things Are.

**IONA HERITAGE CENTRE**, Isle of Iona, PA76 6SJ, 01681 700 576

**IONA ABBEY**, Abbey & MacLeod Centres, Isle of Iona, PA76 6SN, 01681 700 404, Fax: 01681 700460

Inspirational setting for services. Christian community

**IONA GALLERY AND POTTERY**, Isle of Iona, PA76 6SW, 01681 700 439, [www.ionagallery.com](http://www.ionagallery.com), [enquiries@ionagallery.com](mailto:enquiries@ionagallery.com)

2 Stevenson Street, Oban, PA34 5NB, 01631 569 988

Jewellery, ceramics, glass metal, textiles, wood lights, cards

**INVERBERG GALLERIES**, Inverberg, Argyll & Bute, Loch Lomond, G83 8PD, 01436 860 277

**COWAL OPEN STUDIOS**, PA23 8QU

**THE HARBOUR GALLERY**, Harbour Street, Tarbert, PA29 6UA, 01880 821170

paintings and hand woven wall pieces. Sculpture Garden by the loch

**HARBOUR ARTS CENTRE**, 114-116 Harbour Street, Irvine, KA12 8EE, 01294 274 059, [www.harbourartscentre.com](http://www.harbourartscentre.com), [harbourarts@north-ayrshire.gov.uk](mailto:harbourarts@north-ayrshire.gov.uk)

**MCKECHNIE INSTITUTE**, Dalrymple Street, Girvan, KA26 9AE, 01465 713 643, [www.south-ayrshire.gov.uk/galleries/mckechnie/](http://www.south-ayrshire.gov.uk/galleries/mckechnie/)

March/April - TBC

Home and Away, Carrick in World War I

April 24 - 27  
Open Studios Ayrshire. Artists on show at Rozelle, MacLaurin & McKechnie

**THE WAVE CRAFT GALLERY**, 4 Knockcushan Street, Girvan, KA26 9AG, 01465 712 897

Contemporary crafts, pottery classes

**CRAFT TOWN SCOTLAND**, The Barony Centre, West Kilbride, KA23 9AW, 01294 829179, [www.crafttownscotland.org](http://www.crafttownscotland.org), [info@crafttownscotland.org](mailto:info@crafttownscotland.org)

March 14 - May 10  
Various artists. We Are All Basketmakers. Scottish Basketmakers Circle

**ART'N'JOY GALLERY AND PICTURE FRAMERS**, 48 Hamilton Street, Saltcoats, North Ayrshire, KA51 5DS, 01294 472 222, [www.wartnjoy.co.uk](http://www.wartnjoy.co.uk)

**OPEN STUDIOS AYRSHIRE**, Venues throughout Ayrshire, [www.openstudiosayrshire.com](http://www.openstudiosayrshire.com)

Over 70 Ayrshire artists will open their studios to the public

April 24 - 27  
Open Studios Ayrshire 2015. See website for more information

**Banff**

**DUFF HOUSE COUNTRY GALLERY**, Duff House, AB45 3SX, 01261 818181, Fax: 01261 818900, [www.duffhouse.org.uk](http://www.duffhouse.org.uk), [house@aberdeenshire.gov.uk](mailto:house@aberdeenshire.gov.uk)

Until March 15  
The Nation / Live. Community outreach project arranged across five themes - Work, Union, Faith, Civil War and Roots

**MEADOWLANDS GALLERY**, 84 The Terrace, Stonehaven, AB45 1JJ, 01261 818 535

Diane Sutherland, Sue Howells and Douglas Heggis

**Berwick-upon-Tweed**

**THE CREATIVE RETREAT**, 5 St Anne's Terrace, Gardenstown, AB45 1AW, 01261 812 276

**PORTSOY MARBLE GALLERY & WORKSHOP**, Harbour, Shorehead, Portsoy, AB45 2PB, 01261 842 404

Ever-changing ongoing display of pottery, Portsoy marble work, hand-knits, books and presents

**TOMINTOUL MUSEUM & VISITOR CENTRE**, The Square, Tomintoul, AB37 9ET, 01309 673 701

**TOMINTOUL GALLERY**, 82 Main Street, Tomintoul, Ballinadloch, AB37 9HA, 01807 580 458

Contemporary Bank pictures, art in different media. Prints, ceramics & crafts. Artist in Residence: Jane Lammagan

**Ayr**

**MACLAURIN ART GALLERY**, Rozelle Estate, Monument Road, KA7 4NQ, 01292 443 708, [www.south-ayrshire.gov.uk/galleries/macLaurin/](http://www.south-ayrshire.gov.uk/galleries/macLaurin/)

March 7 - April 12  
MacLaurin Art Exhibition. Secondary Schools. Work created by S1 to S6 pupils within South Ayrshire

March 16 - April 12  
Ayr Photographic Society

April 25 & 26  
Open Studios Weekend.

April 25 - May 25  
Royal Scottish Society of Painters in Watercolour Members' Exhibition

March 16 - April 12  
Ayr Art Circle

**ROZELLE HOUSE GALLERY**, Rozelle Park, Monument Road, KA7 4NQ, 01292 443 708, [www.south-ayrshire.gov.uk/galleries/rozellehouse/](http://www.south-ayrshire.gov.uk/galleries/rozellehouse/)

Craft Shop - Range of unique crafts and gifts

Until March 29  
Various artists. The Science of Colour

April 11 - May 17  
Lise Bech, Lilian Busch, Lotte Glöb, Mette Freuregaard-Jensen

Diapora - Scotland seen with Danish Eyes.

**Berwickshire**

**BERWICK GYMNASIUM ART GALLERY**, Berwick Barracks, The Parade, TD15 1DG, 01289 304 535

**NUMBER FOUR GALLERY**, Northfield Farm, St Abbs, Berwickshire, TD14 5QF, 01890 771 111

Contemporary work from artists and designer/makers from both sides of the Border

**THE GRANARY GALLERY**, Dewar's Lane, TD15 1JH, 01289 303 232

**PAXTON HOUSE**, Paxton House, Paxton, TD15 1SZ

**Birmingham**

**TOM DAVIDSON GALLERY**, East Midlands Building, Earlston, TD4 6BU, 01896 848 898

Continuous work by Tom Davidson and work by artist Linda Lovatt

**Berwickshire**

**BERWICK GYMNASIUM ART GALLERY**, Berwick Barracks, The Parade, TD15 1DG, 01289 304 535

**NUMBER FOUR GALLERY**, Northfield Farm, St Abbs, Berwickshire, TD14 5QF, 01890 771 111

Contemporary work from artists and designer/makers from both sides of the Border

**THE GRANARY GALLERY**, Dewar's Lane, TD15 1JH, 01289 303 232

**PAXTON HOUSE**, Paxton House, Paxton, TD15 1SZ

**Ayrshire**

**THE FRAMEWORK GALLERY**, 83 Portland Street, Troon, KA10 6QU, 01292 316 144

Continuous mix of original paintings and printwork by a variety of artists

**GLENBUCK ARTS**, Glenbuck Cottage, Glenbuck, East Ayrshire, KA18 3SB, 01290 661 784

Regular display of sculptures,

**Berwickshire**

**BERWICK GYMNASIUM ART GALLERY**, Berwick Barracks, The Parade, TD15 1DG, 01289 304 535

**NUMBER FOUR GALLERY**, Northfield Farm, St Abbs, Berwickshire, TD14 5QF, 01890 771 111

Contemporary work from artists and designer/makers from both sides of the Border

**THE GRANARY GALLERY**, Dewar's Lane, TD15 1JH, 01289 303 232

**PAXTON HOUSE**, Paxton House, Paxton, TD15 1SZ

**Berwickshire**

**BERWICK GYMNASIUM ART GALLERY**, Berwick Barracks, The Parade, TD15 1DG, 01289 304 535

**NUMBER FOUR GALLERY**, Northfield Farm, St Abbs, Berwickshire, TD14 5QF, 01890 771 111

Contemporary work from artists and designer/makers from both sides of the Border

**THE GRANARY GALLERY**, Dewar's Lane, TD15 1JH, 01289 303 232

**PAXTON HOUSE**, Paxton House, Paxton, TD15 1SZ

**Berwickshire**

**BERWICK GYMNASIUM ART GALLERY**, Berwick Barracks, The Parade, TD15 1DG, 01289 304 535

**NUMBER FOUR GALLERY**, Northfield Farm, St Abbs, Berwickshire, TD14 5QF, 01890 771 111

Contemporary work from artists and designer/makers from both sides of the Border

**THE GRANARY GALLERY**, Dewar's Lane, TD15 1JH, 01289 303 232

**PAXTON HOUSE**, Paxton House, Paxton, TD15 1SZ

# Editorial Comment

ArtWork PO Box 3 AB41 9EA :: [artwork@famedram.com](mailto:artwork@famedram.com)

## The same old tunes again?

ANOTHER YEAR, another Festival. The advance programme for this year's Edinburgh Festival International Festival is full of the usual very worthy fare. There are the usual guest appearances from some of the great orchestras of the world playing some of the finest work from the classical repertoire.

# The

**IKON GALLERY, 1 Ozells Square, Brimleyplace, B1 2HS, 0121 248 0708**  
 Until April 19  
 A.K. Dolven. Nástio Mosquito. Until May 4  
 Robert Groves. Golden Years.  
**BIRMINGHAM MUSEUM & ART GALLERY, Chamberlain Square, B3 3DH, 0121 303 2834**  
 Until May 17  
 New Art West Midlands.  
 Until May 31  
 Art from Elsewhere:  
 Until June 7  
 Faith & Action: Quakers & the First World War.

**Borders**  
**FLAT CAT GALLERY, 2 Market Place, Laner, TD2 6SR, 01579 722 808, www.flatcatgallery.co.uk, flatcatgallery@btconnect.com**  
**THE CHRISTOPHER BOYD GALLERY, Old Gala House, Scott Crescent, Galashiels, TD1 3JS**  
**THE SCOTT GALLERY, Hawick Museum, Wilton Lodge Park, Hawick, TD9 7JL, 01750 20096**  
 April 4 - May 24  
 Jim Miller & Mary Sleigh. In Place & Looking Lip: Looking Down. Textile - art interventions in surrounding parkland to highlight regeneration of Wilton Lodge Park

**THE SMOKEHOUSE GALLERY, St Elms Place, Eyemouth, TD14 5HP, 018907 5216, www.smokehousegallery.co.uk, info@smokehousegallery.co.uk**  
**KELSO POTTERY, The Knowes, 100 metres behind Kelso Abbey, Kelso, TD5 7BH, 01573 224 027**  
 Mugs, jugs, bowls & 'Time Tablets' in the Kelso Pit Kiln

**REAL WOOD STUDIOS, Monteviot Nurseries, nr Ancrum, Jedburgh, TD8 6TU, 01835 830 767, www.realwoodstudios.com, info@realwoodstudios.com**  
 Contemporary Scottish furniture. Café and walks  
**BUY DESIGN GALLERY, 1 Harestanes Craft Workshops, Harestanes by Ancrum, Jedburgh, TD8 6TU, 01835 830 718**  
 Showspace for quality crafts made in wood, metal, glass, ceramic and textile

**THE BORDER TART, Tart HQ, Chesters, nr Hawick, TD9 8TH**  
 Quirky workshop of textile and paper artist Lindsey Roberts  
**TWEEDESIDE GALLERY, Tweed-side Road, Newtown St Boswells, Roxburghshire, TD6 0PG, www.crossingwaters.org.uk**  
 Until April 11  
 Working Perspectives.  
**PROJECT ART GALLERY, 53 High Street, Lockerbie, DG11 2JH**  
 Paintings, photography, prints, jewellery, fish sculptures, cards

**Bristol**  
**ARNOLFINI, Bush House, 16 Narrow Quay, BS1 4QA, 0117 927 2300**  
 Until March 14  
 Fujiko Nakaya. IBT15: Fog Bridge Exhibition.  
 Until March 20  
 Manuel Vason. 100 Exposures.  
**BRISTOL DRAWING SCHOOL, Unit 5.18, Paintworks, Arnos Vale, BS4 3EH**

**Caithness**  
**NORTHSHORE POTTERY, Mill of Forse, Latheron, KW5 6DG, 01593 741 777**  
 Studio pottery and ceramic sculpture by Jenny Mackenzie Ross  
**NORTH LANDS CREATIVE GLASS, Quatre Bras, Lybster, KW3 6BN, 01593 721 229, www.northlandsglass.com, info@northlandsglass.com**  
 March 23 - 27  
 Heather Gillespie. Wild Engraving

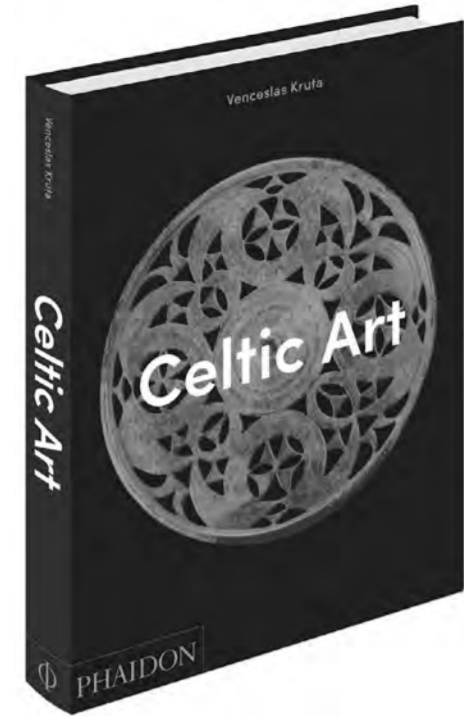
**June 21 - 28**  
 Amanda Simmons. Blooming Vessels. Skills Class  
**July 15**  
 Judith Scheachter. Stained Glass: The Final Frontier.  
**July 18 - 23**  
 Maria Bang Espersen & Max Syron. Glass Unknown.  
**September 5 & 6**  
 Extreme Glass. A focus on material & process.

**LYTH ARTS CENTRE, Lyth, Wick, KW1 4UD, 01955 641 270, Fax: 01955 641360, www.lytharts.org.uk**  
**SWANSON GALLERY, Davidson Lane, Thurso, KW14 7AS, 01847 896 357**  
**ST FERUGS GALLERY, Wick Library, Sinclair Terrace, Wick, KW1 5AB, 01955 603 489**

**Cambridge**  
**KETTLE'S YARD, Castle Street, CB3 0AQ, 01223 748100, www.kettlesyard.co.uk, mail@kettlesyard.com, www.kettlesyard.co.uk**  
 March 17 - June 21  
 Henri Gaudier-Brzeska. New

To Advertise...

## Civilisation of the Celts on record



**PROFESSOR Venceslas Kruta** is regarded as one of the leading world authorities on Celtic art and civilisation and his book *Celtic Art\** must rank as one of the finest to be published on this absorbing subject.

Surperbly illustrated, with a whole series of specially shot photographs, it is a sumptuous record of an intriguing period in human development and civilisation. A densely

\* *Celtic Art* by Venceslas Kruta, £59.95 / €75, Phaidon 2015, www.phaidon.com

# Guide

**worth Museum and Art Gallery, Grasmere, LA22 9SH, 015394 35544**  
**FARFIELD MILL, Garadale Road, Seelbergh, LA10 5LW, 01539 621 958**  
 March 21 - May 10  
 Gillian Muses.  
**MILL YARD STUDIOS, 3 Mill Yard, Staveley, Kendal, LA8 7LR**  
**TULLIE HOUSE MUSEUM AND ART GALLERY, Castle Street, Carlisle, CA3 8TP, 01228 618718, Fax: 01228 810249**  
 Until June 7  
 Anselm Kiefer. Artist Rooms.  
**THE GALLERY AT RHIFGED, Rheged Centre, Reithills, Penrith, CA11 0DQ, 01768 868 000, www.rheged.com, enquiries@rheged.com**  
 March 11 - April 17  
 Various artists. Wildlife Photographer of the Year.  
**Until April 19**  
 Lisa Hooper and Tracy Levine. Fields and Feathers.  
**ARTS OF ALBA, 39/40 Threave Terrace, DG7 1HG, 01556 504 020, www.artsofalba.com, KD@artsofalba.com**  
 Featuring the work of Freida Dyson, Sam Mullen and Sheila Mullin  
**JANINA'S ART, Meadowview, Springholm, DG7 3LP, 01556 650329, www.janinasart.co.uk, janina@janinasart.co.uk**  
 Still lifes, landscapes, portraits, figures, abstracts, experimental work in mixed media

**THE GALLERY AT LAURISTON, Woodbank House, Lauriston, DG7 2PW, 01644 450 255**  
 Contemporary and traditional Fine Art and Landscape images of Galloway  
**ROYAL CORNWALL MUSEUM, River Street, Truro, TR1 2SL, 01872 272 205, Fax: 01872 240154**  
 March 27 - October 3  
 Contemporary Scottish furniture. Café and walks  
**LEMONG STREET GALLERY (LSG), 13 Lemon Street, Truro, TR1 2LS, 01872 275 757**  
 Until March 21  
 David Martin RSW RGI.  
**March 28 - April 25**  
 Neil Canning

**Open All year. Mon - Sat 10.30 - 5**  
 angele@cliencestudio.co.uk / 01556 504318  
 www.cliencestudio.co.uk

**Aberfeldy Gallery**  
 Spring show including Paintings, pottery, woodwork, jewellery, cards and glass  
 From 28 March to 8 May 2015  
 Open Monday to Saturday 10.00 - 5.00 pm  
 Closed Wednesday and Thursday Sunday 1.00 - 4.00 pm  
 3 & 9 Kenmore Street  
 Aberfeldy, PH15 2BL  
 01887 829129  
 www.aberfeldygallery.co.uk

**Dundee**  
**DUNCAN OF JORDANSTONE COLLEGE OF ART & DESIGN GALLERIES, University of Dundee, 13 Perth Road, DD1 4HT, 01382 385 330, Fax: 01382 385 363, www.exhibitions.dundee.ac.uk, exhibitions@dundee.ac.uk**  
 Until April 12  
 Hugs Canadian. Someone a long time ago, now.  
**LAMB GALLERY, University of Dundee, Tower Building, Nethergate, DD1 4HN, 01382 385330**  
 Until March 21  
 Phil Thomson. mono08 Photographs  
**HANNAH MACLURE CENTRE, University of Abertay, Top Floor, Abertay Student Centre, 1-3 Bell Street, DD1 1HP, 01382 308 777**  
**THE KRYSZYNA GALLERY, 15A Nelson Street, DD1 2PN, 01382 322 522, www.kryszyrnagalery.com, kryszyrnart@gmail.com**  
 Drawings, Paintings and Prints  
**THE MCMAHON'S DUNDEE'S ART GALLERY & MUSEUM, Albert Square, Meadowside, DD1 1DA, 01382 307 200**  
 Until May 10  
 The Romans - Power and People  
**GALLERY Q, 160 Nethergate, DD1 4DU, 01382 220 600**  
**DUNDEE CONTEMPORARY ARTS (DCA), 152 Nethergate, DD1 4DY, 01382 909 900**  
 Until March 22  
 Lucy Skaer. New Editions.  
**Until March 22**  
 Florian & Michael Quistbrecht. Visions of Void. Abstract videos and paintings

**19 March - 18 April**  
 Award winning printmaker Lino - cuts Wood cuts & Etchings  
**GALLERY AT FIFTY FIVE, 55 ALLARDICE STREET, STONEHAVEN AB39 2AB, T. 01569 785606**  
**Ring: 01436 672544**

## Painter who catches the spirit of the East Coast

Frances Anderson talks to George Birrell before his show at Gallery Heinzell

AS A BOY, sketching boats and cars was a refuge for the artist George Birrell. Fast forward to today and Birrell is celebrating a solo show, exhibiting 45 of his works at Gallery Heinzell in Aberdeen. As one of Scotland's most successful artists, George Birrell has an inherent interest in the architecture and landscape of his native Scotland and the spirit of the East Coast towns and fishing villages of Fife provide the primary inspiration for his work.

Growing up in Glasgow's West End, Birrell disliked secondary school and drawing became an escape: "I was always drawing, especially boats and cars - I was very fond of both - I still am. Drawing allowed me to escape into myself I suppose, to a kind of place where I was okay with myself."

"Looking back it was my refuge, although at the time it was only a mild comfort really. It wasn't until I discovered I could paint aged thirteen or fourteen that secondary school picked up. I got a commendation in the Glasgow Schools Art competition, which was a tremendous boost.



"I took painting extremely seriously after that. I loved it because it gave me kudos. All anybody wants is to be somebody, and that made me somebody. It was just like being born again really in the most complete sense. It transformed my life from being a fairly miserable adolescent, into a confident, forward-thinking individual.

"The late William Birnie was my highly influential art teacher at Hyndland School. He showed me advanced techniques with oil painting even before I went to art school. It was through him I discovered the East Neuk villages of Fife".

Glasgow School of Art followed (after a struggle to get Higher English). Birrell states: "It was inspiring, not least for the building itself. You can't spend four years at Glasgow School of Art without being aware of proportion and scale, shape, pattern and texture."

"All the elements of visual art forms are represented in that building; it's part Scottish castle, part grand manor, part institution. It has gorgeous detail, tiny careful detail. My first and second years were important as many disciplines were introduced. William Drummond Bone was a powerful teacher of drawing and anatomy. My main influences from that time (and still today as people as well as fine artists) were William Crosbie and Joan Rix Tebbutt.

"William Crosbie was a part-time lecturer, and took us in third year for painting on a Tuesday afternoon. I used to look forward to that, because here was someone who would sit down and talk, show you a technique.

He would actually turn up! He was simply a brilliant teacher, like a bedraggled old sailor, but he'd sit down and tell you about the characteristics of the various colours you were using. Like what made Prussian blue special as opposed to ultramarine.

"He was a wonderful painter who became a great friend. I kept my contact with him even after I left art school - I used to go round and paint in his studio. I should also mention Ernest Hood, my printmaking lecturer in third year, who taught me etching and lithography. The year after I left art school he employed me to underpaint a huge mural that he was doing for a distillery. I learned a great deal from Ernest Hood, and he actually paid me!"

Even before art school, Birrell fell in love with buildings. At fifteen he went to Fife, to the East Neuk, Pittenweem, on a week's holiday to paint. "It was like going to a foreign country, my holiday trips had seldom gone beyond the Clyde resorts." Captivated, George made it his artistic focus to revisit these wynds and cottages, portraying their quirks and unearthing their history.

"I was completely besotted by the East Coast and still am. Caithness or Aberdeenshire, or Moray or Fife or the Borders or Berwickshire. It's very different, people have a sing-song thing in their voice, the air is drier, it's sunnier and villages have a unique character. "The wee fishing villages of the East Neuk are the best preserved in Britain actually. I went to St Ives

and was disappointed that they were so spoilt by wealth. All those flat roof extensions on otherwise nice, wee places. They've been just ruined, fortunately the powers that be in Scotland have prevented that.

"The East Neuk of Fife tickles my eye and stirs my soul. It's all higgledy-piggledy, built to provide shelter against the east wind with the harbour walls and the warning lights. I love the smell of the sea, the smell of the fish, the lobster pots, the nets - it's kind of a bygone age in many ways.



"The wind, sunshine, textures; and feeling I belong here... it's hard to admit to this kind of airy-fairy statement but it has always struck me as a sad wrench when I had to leave the east. And there's definitely something about that coast, the way the harbours were put together over time against the strong seas."

Following his studies, Birrell taught art and design in Scottish schools and art colleges, only starting painting full time in 1998. Since then, he has regularly taken part in numerous solo and group exhibitions in Scotland such as the Edinburgh and Fife Art Galleries, as well as having his work on display in London and New York.

Birrell's career has been defined by high key architectural paintings of the East Coast. He doesn't work from a sketch, preferring to recreate the remembered feeling of a place.

"I work from memory (or improvisation?)," he states, "using simplified shapes and heightened colour to express my joy in finding worn walls or

## Ruth Nicol: Three Rivers Meet

2 February - 19 April 2015  
 theparkgallery  
 Celebrating 15 Years theparkgallery  
 Monday to Saturday 10am-5pm | Last admission 4pm | Free admission  
 Callender House | Falkirk FK1 1YR | www.falkirkcommunitytrust.org

the park gallery

## HENRY KONDRACKI Three Cities

4 - 28 MARCH 2015  
 WWW.SCOTTISH-GALLERY.CO.UK/KONDRACKI  
 CATALOGUE AVAILABLE UPON REQUEST



Greysfriars Bobby in the Snow, oil on canvas, 114 x 89 cms

**@ www.northernbooks.co.uk**

**NORTHERNBOOKS**

**127th Annual Exhibition Paisley Art Institute CALL FOR ENTRIES**  
 Sat. 23rd May - Sun. 28th June 2015  
 Receiving Days: Thurs. 23rd - Sat. 25th April 2015

Schedule and downloadable labels  
 www.paisleyartinstitute.com  
 or send SAE to  
 PAI Secretary  
 4 Talbot Court  
 Glasgow G13 3RQ

**PAI**

Paisley Museum & Art Galleries  
 www.paisleyartinstitute.com  
 (Registered Charity No. 520204)

**The Colour of Life**

**7TH MARCH - 28TH JUNE**

**THE VELVET EASEL GALLERY**

298 Portobello High Street | Portobello  
 Edinburgh | EH15 2AS  
 0781 391 6684 | velvetease.co.uk | art@velvetease.co.uk

**JONATHAN SHEARER**

**'A Sense of Place'**  
 'New Paintings from the Highlands'  
 14 March - 4 April, 2015

See our website for further details  
 www.castlegallery.co.uk

**Gailearaidh 'a' Chaisteil**  
**Castle Gallery**  
 43 Castle Street  
 Inverness IV2 3DU  
 01463 729512  
 www.castlegallery.co.uk

# The

Weissmann and Carlos Zilo  
**INVERLEITH HOUSE**, Royal Botanic Garden, 20a Inverleith Row, EH3 5LR, 0131 248 2971  
**THE QUEEN'S GALLERY**, Palace of Holyroodhouse, Abbeyhill, EH8 8JX, 0131 556 5100  
 March 20 - October 11  
 Painting Paradise: The Art of the Garden. Explores the way in which the garden inspired artists and craftsmen between 1500 and 1900 and draws on oil paintings, works on paper, books, manuscripts and decorative arts  
 Until January 13 2016  
 Waterloo at Windsor 1815-2015. Celebration of the allied victory to explore the battle and its aftermath. Display - prints and paintings  
**TALBOT RICE GALLERY**, University of Edinburgh, Old College, South Bridge, EH8 9YL, 0131 650 2211  
 March 14 - May 2  
 Ross Birrell and David Harding. Where Language Ends. Celebrates the importance of symbolic labour and the possibility of transcending a purely material reality  
**BOURNE FINE ART**, 6 Dundas Street, EH3 6JZ, 0131 557 4050  
 Until March 14  
 Emily Young. Stone from the Mountain. Head sculptures, torsos and discs  
**OPEN EYE GALLERY**, 34 Abercorn Place, EH3 6QE, 0131 557 1020, www.openeyegallery.co.uk, mail@openeyegallery.co.uk  
 March 16 - April 1  
 Donald Provan. Formation. New works  
**THE SCOTTISH GALLERY**, 16 Dundas Street, EH3 6JZ, 0131 558 1200, Fax: 0131 558 3900  
 March 4 - 28  
 Henry Kondracki: Three Cities  
 Also: Linda Lewin, jewellery; Jankel Adler, The Master: Paintings, Drawings and Prints; Clive Bowen, Lisa Hammond, Akiko Hirai, Jim Malone, William Plumptre and Walter Keeler. A Celebration of British Studio Pottery.  
**TORRANCE GALLERY**, 36 Dundas Street, EH3 6JN, 0131 556 6366, www.torrancegallery.co.uk, enquiries@torrancegallery.co.uk  
 March 14 - April 18  
 Spring Exhibition. Over 60 Gallery Artists - Jewellery by Sheena Stephen  
 April 25 - May 9  
 Ken Ferguson  
**INGLEBYE GALLERY**, 15 Calton Road, EH8 8DL, 0131 556 4441  
 Until March 21  
 Jane Bustin, Kevin Harman, Paul Kerr and Jeff McMillan. A.B.J.D.  
 Until May 8  
 David Batchelor. Billboard for Edinburgh. Installation  
 March 28 - May 23  
 Frank Walter. Landscape  
**GALLERY TEN**, 10 Stafford Street, West End, EH3 7AU, www.galleryten.co.uk  
 March 21 - May 5  
 Cat Outram, prints; Kirstie Cohen, paintings; Becky Crow, jewellery; Emma Williams, ceramics  
**EDINBURGH PRINTMAKERS WORKSHOP GALLERY**, 23 Union Street, EH1 3LR, 0131 557 2479, Fax: 0131 558 8418, www.edinburghprintmakers.co.uk, info@edinburgh-printmakers.co.uk  
 Until March 7  
 David Leent, Debris and Phenomena  
**PATRIOTHALL GALLERY @ WASPS**, 1d Patriothall, off Hamilton Place, Stockbridge, EH3 5AY, 0131 226 7126  
**THE DUNDAS STREET GALLERY**, 6 Dundas Street, EH3 6HZ  
**ROYAL BOTANIC GARDEN EDINBURGH**, 20a Inverleith Row, EH3 5LR, 0131 552 7171, Fax: 0131 248 2901  
**EDINBURGH COLLEGE OF ART**, Lauriston Place, EH3 9DF, 0131 221 6109, Fax: 0131 221 6109, www.eca.ac.uk, continuing-studies@eca.ac.uk  
 March 2 - 6  
 Creative & Cultural Careers Festival. Find out more about working in the creative industries, media or cultural institutions  
**LEITH SCHOOL OF ART**, 25 North Junction Street, EH6 6HW, 0131 554 5761, Fax: 0131 554 5514, www.leithschoolofart.co.uk, enquiries@leithschoolofart.co.uk  
 Until April 3  
 David Martin. Ecliptic. Painting July 13 - August 21  
 Summer School. Painting, jewellery, drawing, printmaking, 12-16 Year olds, mixed media  
**MCKNAUGHTAN'S BOOKSHOPS AND GALLERY**, 3a & 4a Haddington Place, EH7 4AE, 0131 556 5897, www.mcknaughtansbookshop.com, mcnbooks@btconnect.com  
**DOVECOFT STUDIOS**, 10 Infa Mary Street, EH1 1LT, 0131 550 3660, Fax: 0131 550 3669  
 March 6 - April 25  
 Magpie Funnelmen. Peeling a Glass Onion. Solo

# Out in the open – a plein air painter on how it's done

*'Sense of Place' at the Castle Gallery, Inverness reveals Jonathan Shearer's secrets*

JONATHAN Shearer, whose exhibition 'Sense of Place' is at the Castle Gallery in Inverness during March, gives *ArtWork* an insight into his experiences of painting in extreme weathers and isolated locations, often far off the tourist track.



Knives (and trowels) at the ready in 'Solitude' at Aberdeen Art Gallery, marked her 80th birthday.

"I love the winter light in the Scottish Highlands, particularly at that time in the late afternoon when the sun is low and the sky is a mix of blue and orange. It's a beautiful time to be out in the open." Shearer says. "I'm not bothered by the weather. I've been painting in the snow, in the rain, and in the sun. It's all part of the experience."

Walker was his tutor at Grays. In 2010 her major retrospective, 'Observed Between three and four – before hypothermia set in! Summer light for me is more about the coast and the sea – the mountains are dull then!'"

"I can go out in all conditions with the right winter gear – fingerless gloves, four pairs of socks and now with new proper walking boots!" He is interested in the methods used by other of today's landscape painters such as Kurt Jackson and Robert McLauren, now working in the Australian outback.

He takes inspiration from other artists who have grappled with the elements to paint en plein air – MacTaggart on Machrihanish beach; Frances Walker, painter and printmaker always working in remote regions of Scotland, as well as in Antarctica and the Arctic.

Walker was his tutor at Grays. In 2010 her major retrospective, 'Observed Between three and four – before hypothermia set in! Summer light for me is more about the coast and the sea – the mountains are dull then!'"

Being a keen hill walker, he sets out to previously remembered viewpoints, often revisiting favourite spots to contemplate and then to try to capture them in changing lights and conditions – "they are never the same again."

## HOLIDAYS IN SCOTLAND



Harbour and Pool, Fife Archibald Dunbar McIntosh RSW RGI

## THE TOD ENDOWMENT FUND

The Scottish Artists' Benevolent Association is empowered by the above to provide holidays in Scotland for artists (resident in Scotland for at least two years) who are experiencing difficulties.

Application forms may be obtained from: The Secretary, Scottish Artists' Benevolent Association, Second Floor, 5 Oswald Street, Glasgow G1 4QR

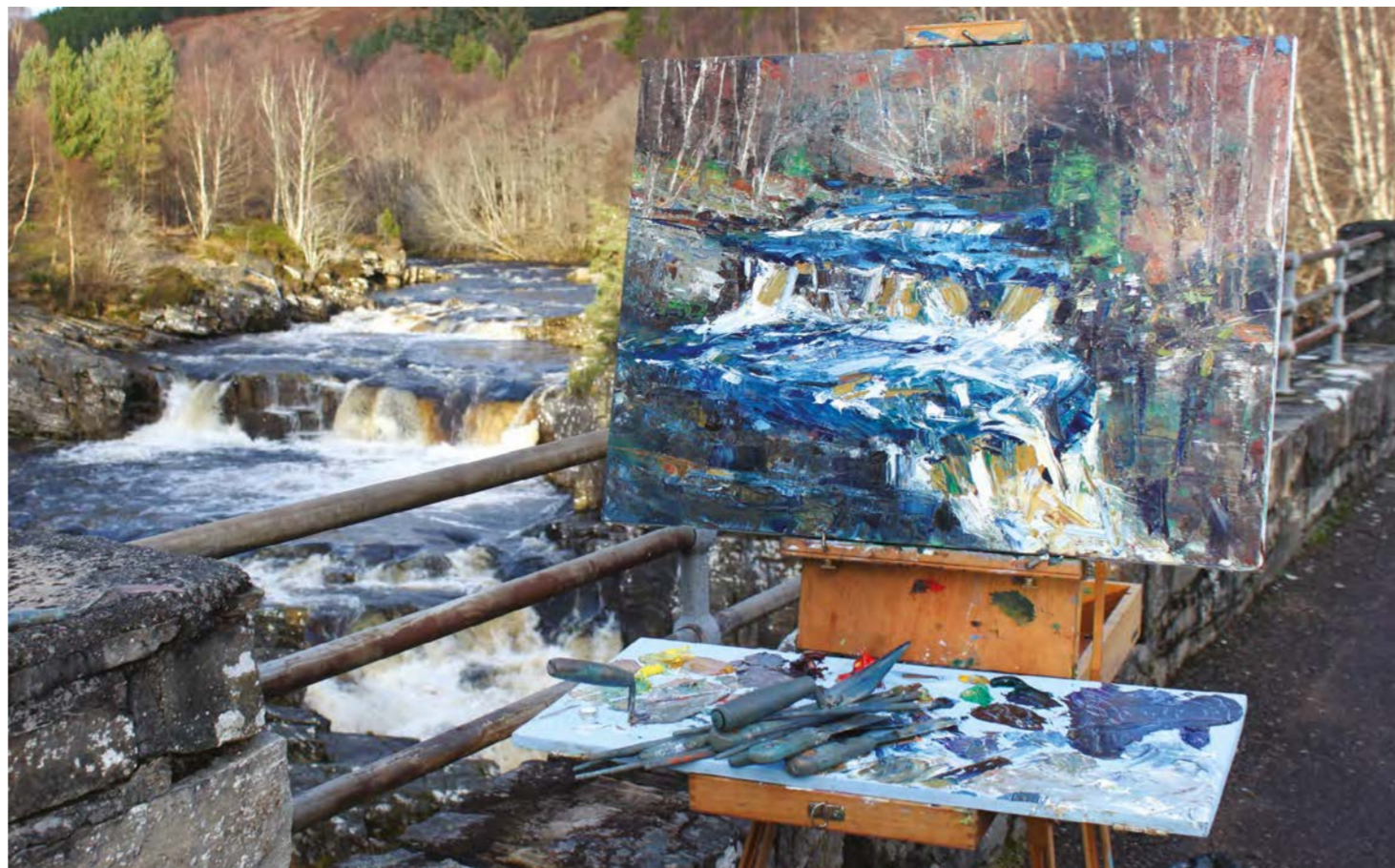
All information received is Private And Confidential

Charity No SC010046

## In Place & Looking Up: Looking Down

**JAN MILLER & MARY SLEIGH**  
 A unique gallery exhibition by two textile artists. Also their 'art interventions' placed outside in the surrounding parkland to highlight the regeneration of Wilton Lodge Park.  
 Sat 4th April – Sun 24th May 2015  
 The Scott Gallery, Hawick Museum, Wilton Lodge Park, Hawick TD9 7JL

Tel 01450 373457  
 Open: Mon-Fri 10am-12pm & 1pm-5pm  
 Sat, Sun 2pm-5pm



that young students themselves are realising what they are missing and may start demanding a return to the fundamentals of drawing and painting.

Jonathan Shearer: A Sense of Place, Castle Gallery, Inverness, March 14 – April 4. www.castlegallery.co.uk



**MEADOWLANDS Gift Shop & Gallery**  
 Botanical paintings and graphic work by DIANE SUTHERLAND, and new original paintings and prints by SUE HOWELLS and DOUGLAS HEGGIE.  
 Relax and enjoy real coffee and fresh baked scones in our new coffee shop.  
 Open Mon - Sat 9:00am - 5:30pm  
 83 North Castle Street, Banff AB45 1JJ  
 tel: 0261 818535 • E: meadowlandsbanff@aol.com  
 www.meadowlandsbanff.co.uk

**Joyce Taylor ARTIST**  
 Oils and Watercolours  
 01779 622989  
 info@joycetaylor.co.uk  
 www.joycetaylor.co.uk

**ANN DAVIDSON**  
 NORTH FROM SUTHERLAND  
 Collage-paintings of Sutherland, Iceland and Greenland  
 Exhibition runs 10 - 25 April 2015  
 Artist Talk Saturday 18 April 2pm  
 RGI KELLY GALLERY 118 DOUGLAS STREET GLASGOW G2 4ET  
 gallery@royalglasgowinstitute.org 0141 248 6386 www.royalglasgowinstitute.org  
 OPEN TUES - SAT 10AM - 5PM  
 Company Limited by Guarantee. Registered in Scotland No. 912. Scottish Charity No. SC014650



that young students themselves are realising what they are missing and may start demanding a return to the fundamentals of drawing and painting.

**GALLERY HEINZEL CONTEMPORARY ART**  
**GEORGE BIRRELL**  
 21st March to 2nd May  
 24 Thistle Street, Aberdeen AB10 1XD  
 T: 01224 625629 E: info@galleryheinzel.com  
 W: www.galleryheinzel.com  
 OPEN MONDAY TO SATURDAY FROM 10am  
 www.facebook.com/galleryheinzel

**SCOTTISH BORDERS**  
**ART ROOM**  
 20th - 22nd MARCH 2015  
 SPRINGWOOD PARK, KELSO  
 www.borderexhibitionsandevents.co.uk  
 For details contact: The Vennel Gallery, 161B Roxburgh Street, Kelso  
 TEL: 01573 224003 | EMAIL: vennelgallery@live.co.uk

# Guide

**EDINBURGH ART SHOP**, 129 Lauriston Place, EH3 9JN, 0131 229 1809, www.EdinburghArtShop.co.uk, info@EdinburghArtShop.co.uk  
**THE VELVET EASEL GALLERY**, 298 Portobello High Street, Portobello, EH15 2AS, 0131 629 1121, www.velveteasel.co.uk  
 March 7 - June 28  
 The Colour of Life.  
**VISUAL ARTS SCOTLAND**, 16 Craighall Terrace, Musselburgh, EH21 7PL, www.visualartscotland.org, info@visualartscotland.org  
**URBANE ART GALLERY**, 25-27 Jeffrey Street, EH1 1DH, 0131 556 8379  
 April 4 - May 3  
 First Anniversary Exhibition. Art of the Matter. Celebration of art and science  
**ALPHA ART GALLERY**, 52 Hamilton Place, Stockbridge, EH3 5AX, 0131 226 3066  
 March 28 - April 12  
 Daniel Campbell, Sheila Fowler, Stephanie Reed, Joe O'Brien, Frank Lo, Philip Raskin, Graeme Sharp and Nadia Lazzi. Scottish Perspective.  
**Falkirk**  
**THE PARK GALLERY AND CALENDAR HOUSE**, Calendar Park, FK1 1YR, 01324 503 789, www.falkirkcommunitytrust.org/venues/park-gallery, artsandcrafts@falkirkcommunitytrust.org  
 Until April 26  
 Ruth Nicol. Three Rivers Meet.  
**THE WEST END GALLERY**, 3-45 West Bridge Street, FK1 5AZ, 01324 613 100, www.thewestendgallery.co.uk  
**DELTA STUDIOS**, Lochlands Business Park, Larbert, FK5 3NS, 01324 555 500  
 Artists studios and workspaces for rent or lease  
 Until March 27  
 And then you danced... Work from Studio 5 artists that attend classes at Delta Studios  
**FORTH VALLEY OPEN STUDIOS**, 29 Gartcove Crescent, FK1 5QH  
 An annual nine-day event which takes place in the Forth Valley, Central Scotland  
 June 6 - 15 (Entry deadline: Dec 31 2014)  
 Forth Valley Open Studios  
 May 26 - June 27  
 Pop-up Show. The Makers Gallery & Bistro  
**Fife**  
**KIRKCALDY MUSEUM & ART GALLERY**, War Memorial Gardens, Abbotshall Road, Kirkcaldy, KY1 1FQ, 01592 412 860  
 Until May 31  
 Ackroyd & Harvey, Leah Black, Calum Colvin, Zoe Irvine, David Mach, Lindsay Perth and Clara Ursitti. Portraits  
**ABBOT HOUSE**, 21 Maygate, Dunfermline, KY12 7NE, 01383 623 580  
 Full programme of exhibitions throughout the year, visit website or call for details  
**PITTEWEEM ARTS FESTIVAL**, Festival Offices, 47 High Street, Pittenweem, KY10 2PG, 01333 313 903, www.pittenweemartsfestival.co.uk, info@pittenweemartsfestival.co.uk  
 August 1 - 9  
 2015 Festival  
**EAST NEUK OPEN STUDIOS**, East Neuk, 01333 730 249, www.eastneukopenstudios.org, hello@eastneukopenstudios.org  
**FISHER STUDIO AND GALLERY**, 11-13 High Street, Pittenweem, KY10 2LA, 01333 312 255, www.fishergallery.co.uk, enquiries@fishergallery.co.uk  
 John Nelson  
**FUNKY SCOTTISH**, 41 High Street, Pittenweem, KY10 2PG, 01333 312 567  
**JOHN NELSON STUDIO GALLERY**, 26 Milton Place, (on A917 - 15mins from St Andrews), Pittenweem, KY10 2LS, 01333 312 112, www.johnnelsonprints.com, info@johnnelsonprints.com  
 Featuring paintings and prints by John Nelson  
**CRAIL POTTERY**, 75 Nethergate, The Square, Crail, KY10 3TX, 01333 451 212  
 Huge variety of handthrown stoneware, terracotta, earthenware & raku  
**THE LITTLE GALLERY**, 20 High Street, Pittenweem, KY10 2LA, 01333 311 227  
**SCOTTISH FISHERIES MU-**  
**SEUM**, St Ayles, Harbourhead, Anstruther, KY10 3AB, 01333 310 628  
 March 27 - May 31  
 Poles Apart: changing attitudes to whaling in the 20th century. In collaboration with the University of St Andrews Library  
**CUPAR ARTS & HERITAGE PROJECT (CAHP)**, 5 Ashlar Park, Lovers Lane, Cupar, KY15 5AO  
**PETE CURA PICTURE FRAMING**, At the Galleries, Burnside, Cupar, KY15 4BH, 01334 652 553  
 Lino cuts by Barbara Robertson, Caricatures by Donald Smart. New editions by Sonus MacLean  
 Framing over 100 mouldings to choose from  
**MAISE & MAC ART AND CONTEMPORARY CRAFT**, 1-3 St. Catherine Street, Cupar, KY15 4LS, 01334 656 523, www.maisieandmac.com, info@maisieandmac.com  
 Paintings, prints, sculpture, textiles, ceramics, wood & metal from UK artists and makers  
**CRISLEDA HILL POTTERY LTD**, Kirkbrac, Ceres, Cupar, KY15 5ND, 01334 828 273, Fax: 01334 828008  
 Weynos Ware. Fife's famous hand painted pottery  
**GERRY PINE GALLERY**, Gerry Pine, 67 Nethergate North, Crail, KY10 3TX, 01333 450 442, www.artincrail.com, artcourse@chessmail.co.uk  
 Landscape Painting near St Andrews  
**KINGHORN GALLERY**, Kinghorn, KY3 9RT, 01592 900 218, celcra.rob@hotmail.com  
**CULROSS POTTERY AND GALLERY (& BISCUIT CAFÉ)**, Southside, Culross, Dunfermline, KY12 8JG, 01383 882176, Fax: 01383 882176, www.culrosspottery.com, camilla@culrosspottery.com  
**THE QUAY GALLERY**, 33 High Street, Aberdeen, KY3 0SH, 01383 860 602  
**BAIBIRNE CRAFT CENTRE**, Markinch, Glenrothes, Tayside, KY7 6NE, 01592 753 743, Fax: 01592 753 743  
 Alison & Roy Murray goldsmithing & jewellery, also at 20 Thistle Street, Edinburgh  
**TWIST FIBRE CRAFT STUDIO**, 88 High Street, Newburgh, Cupar, KY14 6AQ, 01337 842 843, Fax: 01337 842506  
 Workshops and supplies - knitting, weaving, spinning, felt making, natural dyeing. Natural fibre yarns, books, magazines, equipment and kits  
**FIFE FOLK MUSEUM**, High Street, Ceres, KY15 5NF, 01334 828 180, www.fifefolkmuseum.org  
**OPEN STUDIOS FIFE**, The Hollies, 2 Low Road, Auchtermuchty, KY14 7AU, 01337 827 087  
**CONTEMPORARY ARTS DUNFERMLINE (CAD)**, Upper Mall, The Kingsgate, Dunfermline  
 Scottish artists work, mixed media, 2d, 3d, small sculpture, work (ceramic, Glass and wood), Digital images  
**ATTFEE @ FIFESPACE**, Rothes Hall, Rothes Square, Glenrothes, KY7 5NK, 01592 611011  
**KIRKCALDY ART CLUB**, Hot Pot Wynd, Dysart, Kirkcaldy, KY11 2FQ, 01592 203270, www.kirkcaldyartclub.org.uk, averyk4@aol.com  
 Painting classes, Monday 2-4pm and 7-9pm, Tuesday 7-9pm and Thursday 10-noon. Pottery classes, Monday 10-12pm and 7-9pm, Tuesday 7-9pm and Wednesday 2-4pm  
**STUDIO 222 GALLERY & WORKSHOP**, 222 High Street, Newburgh, KY14 6DZ, 01337 842133, www.facebook.com/crafts222  
 Stained Glass, original paintings, jewellery, ceramics, textiles, hand-printed cards. Offering regular creative classes  
**BIRCHWOOD COTTAGE GALLERY & TEAROOM**, Balmungo, St Andrews, KY16 8JW, 01334 208220  
 Gallery/tearoom just outside St Andrews on the B91 31. Mixed rolling exhibition of original art work and prints by local artists  
**MASPIE HOUSE GALLERY**, High Street, Falkland, KY15 7EL, 01337 857 735, www.maspiehousegallery.com, info@maspiehousegallery.com  
 A wide selection of paintings, giclee prints and cards, jewellery, books and stationery. Children's arts and crafts plus ceramics and glass. Picture framing service available  
**Glasgow**  
**KELVINGROVE ART GALLERY & MUSEUM**, Argyle Street, G3 8AG, 0141 287 2699, Fax: 0141 276 9540  
 Until March 27  
 Martin Hunter. Forth & Clyde

Ring: 01436 672544

To Advertise...

# The ArtWork

Exhibition, Photography  
 Until May 21  
 Pickeny & Rembrandt. Picturing Women. Display  
 Until June 14  
 Jewell-Jeek Treasures. Dutch and Flemish paintings on paper  
**THE BURRELL COLLECTION**, Pollok Country Park, 2060 Park-Lochmores Road, G43 1AT, 0141 287 2550, Fax: 0141 287 2597  
 Until March 21  
 Bellini to Boudin. Five centuries of painting - display of over 40 jewels of the fine art collection  
 Until March 29  
 Contemporary Connections. A display of lace made by members of Glasgow Lace Group  
**GALLERY OF MODERN ART (GOMA)**, Royal Exchange Square, G1 3AH, 0141 287 3050, Fax: 0141 287 3062  
 Until May 25  
 Alastair Gray. Spheres of Influence. Visual work  
 Until January 24 2016  
 Ballet Of The Palette. 20th century paintings  
 March 27 - February 28 2016  
 Ripples on the Pond  
**RIEVESIDE MUSEUM**, 1 Bumbhouse Road, G3 8DP, 0141 287 2720  
 Scotland's Museum of Transport and Travel  
 Until July 1  
 Stanley Spencer. Shipbuilding on the Clyde  
**GLASGOW MUSEUM, Culture and Sport Glasgow**, 20 Trovante, G1 5ES, 0141 287 4350  
 Call or visit website for full details  
**ST MUNGOS MUSEUM OF RELIGIOUS LIFE AND ART**, 2 Castle Street, Glasgow City, G4 0RH, 0141 276 1625, Fax: 0141 276 1626  
 Until April 5  
 In Honour's Case. Glasgow Women's War One Memorial - Photographs  
**SCOTTISH AND STREETSCHOOL MUSEUM**, 225 Scotland Street, G5 8QB, 0141 287 6800, Fax: 0141 287 0515  
**UNLIMITED STUDIOS**, 55 Hayland Street, G11 5QE, 0141 338 6025  
**CENTRE FOR CONTEMPORARY ARTS (CCA)**, 350 Sauchiehall Street, G2 3JF, 0141 352 4900, Fax: 0141 332 3226  
 Until March 14  
 Rachel Levine. Soft Chaos  
 Until March 15  
 Romany Dear, Justyna Ataman, Daniela Corda, Melanie Forbes Broomes, Adam Harris, Zephyr Liddell, Casey O'Connell, Cassie Oji and Julia Scott  
**GLASGOW SCHOOL OF ART**, 167 Rindfoss Street, G2 6RQ, 0141 353 4589, www.gsa.ac.uk  
**MACKINTOSH CHURCH**, Crank Street, Queen's Cross Church, 87a Garscube Road, G20 7EL, 0141 946 6060, Fax: 0141 946 7276  
**THE HUNTERIAN MUSEUM AND ART GALLERY**, University of Glasgow, University Avenue, G12 8QQ, 0141 330 4221  
 Until May 1  
 The Art of Fiji. Showcase  
 March 26 - October 2015  
 The Only Way To Do It To Do It Workshop  
**MCCLELLAN GALLERIES**, 270 Sauchiehall Street, G2 3EH, 0141 565 4137  
**RG1 KELLY GALLERY**, 118 Douglas Street, G2 4ET, 0141 248 6386, www.royalgalleryinstitute.org/kelly.html, gallery@royalgalleryinstitute.org  
 March 14  
 Robin Leishman. Solo - new work  
**THE ANNAN GALLERY**, 164 Woodlands Road, G3 6LL, 0141 332 0028  
 March 6 - 22  
 Ron Lawson  
 April 24 - 26  
 Glasgow Contemporary Art Fair  
**ROGER HILL CLIFFE GALLERY**, 134 Blythwood Street, G2 4EL, 0141 332 4027, Fax: 0141 332 6573  
 Until December 31  
 Meetings on Mackintosh  
**COMPASS GALLERY**, 178 West Regent Street, G2 4RL, 0141 221 6370  
 March 5 - 28  
 Anna Geoides. As Far As The Eye Can See  
**MCCREGGORY FINE ART**, 5th Floor, The Central Building, 36 West George Street, G2 1HA, 0141 332 5551, Fax: 0141 332 9967  
**CYRIL GERBER FINE ART**, 178 West Regent Street, G2 4RL, 0141 221 3095, www.gerberfineart.co.uk, mail@gerberfineart.co.uk  
 British paintings, sculpture and drawings  
**EWAN MUNDY FINE ART**, 211 West George Street, G2 2JW, 0141 248 9755, Fax: 0141 248 9744, www.ewandymundy.com, emundy@btconnect.com

## Elemental adventures with light

THE ELEMENTS have inspired many artists over the years, from composers to painters. In a city of great light it is perhaps no surprise that Los Angeles currently boasts a show solely focused on the light. 'Elemental: Seeing the Light' at the Start Haaga Gallery, Descanco Gardens.

Curated by John David O'Brien, a Japanese born American living now between LA and Tuscany, the show is held in the beautiful surrounds of Descanco Gardens in the north of the sprawling city of angels at Flintridge, La Canada.

I met John recently and walked the steep incline through the camellia scented gardens with him, past the many cherry trees, hyacinths and lilies, all contributing to a multi sensory artist experience before arriving at the impressive Haaga Gallery at the top of the hills.

The show includes luminous sculptures by 15 contemporary artists. It successfully shines a light on traditional California light and space movement pioneers Larry Bell, Helen Pasghian and Mary Corse, who have been creating light installations since the '60s and '70s, with more up to date second-generation light and space artists who started in the '80s and '90s, like Heather Carson, Yunhee Min and Fran Siegel.

It's a refreshing and uplifting show that invites you to question what light really is. As O'Brien says: "The funny thing about light is that you can't really see it. You can see the things that make light, like the sun, the light bulb overhead, or the fire in the fireplace. You can see other things like leaves, rocks, rooms, cars, and buildings because of the light that bounces off their surfaces into your eyes and brain. You can see a rainbow when the conditions are right."

"But you can't see the actual light itself, only its effects. You know it exists because of what it does to everything else. The one thing it can't do

is portray itself. This fascinating show, aims to expose how artists both use and portray light. It took O'Brien about eight months to prepare for the show, the hardest thing he said was preaching to his church like committee that this was to be the next show.

"We have covered other aspects of the Elements here already. Like Earth, which is very important to us being in the gardens.

"It's good to do something different here, here we have many people of all nationalities, and many women - working all together in the space."

It's a great show for all ages too with a lightboard section for children - encouraging them to create their own light artworks with perspex. O'Brien loves living in Los Angeles, apart from the movie



**Yunhee Min 1**  
 people, he says, but as a working artist and sculptor, the light really is fantastic he says.  
 Elemental: Seeing the Light, at Start Haaga Gallery, Until April 5, 2015 Descanco Gardens, Los Angeles. www.descancogardens.org

## THE GLASGOW ART CLUB

Located in the heart of the city, The Glasgow Art Club is the private members club with a difference.

Membership starts from as little as £8.50 per month and with reduced rates for artists, students, under-35's, corporate and out of town members, there's never been a better time to join!

Call, email or visit us online today to find out more.

MEET / SHARE / RELAX / CELEBRATE / ENJOY  
 THE GLASGOW ART CLUB  
 185 BATH STREET, GLASGOW, G2 4HU  
 INFO@GLASGOWARTCLUB.CO.UK  
 0141 248 5210

Stunning original art, beautiful limited edition prints and individually hand crafted gifts.  
 Situated in the picturesque market town of Peebles.

1 Biggiesknowe, Peebles | tweedart.co.uk

## FRAMES GALLERY



Dunfermline Printmakers Workshop Exhibition  
 7th March - 4th April  
 10, Victoria Street, Perth www.framesgallery.co.uk  
 01738 631085 info@framesgallery.co.uk

FRAMING STUDIO  
 ARTISTS & CRAFT MAKERS GALLERY  
 Ring: 01436 672544

## The Guide

**GALLERY**, Castle Wynd, IV2 3EB, 01463 237114  
**CASTLE GALLERY**, 43 Castle Street, IV2 3DU, 01463 729 512, www.castlegallery.co.uk, info@castlegallery.co.uk  
 March 14 - April 4  
 Jonathan Shearer. A Sense of Place. Lively, impressionistic oil plein air oil paintings of the Highlands  
**RAVEN PRESS GALLERY**, Colbold, Dunfermline, IV55 8ZS, 01470 511 748  
 Wood engravings of landscape and wildlife. Resist dyed silks and hand knit canvas  
**HIGHLAND PRINT STUDIO**, 20 Bank Street, IV1 1QU, 01463 718 999, www.highlandprintstudio.co.uk, info@highlandprintstudio.co.uk  
 Open access print studio and education facility. Regular weekend and evening courses available - call for full details  
**INCHEMORRE GALLERY**, Inchmore, by Inverness, six miles W of Inverness on (A962) Beatty Beach, IV55 8ZS, 01463 831 573, www.inchemorregallery.co.uk, info@inchemorregallery.co.uk, inchmore@btinternet.net  
**HICA (HIGHLAND INSTITUTE OF CONTEMPORARY ART)**, Dalnaculbich, Loch Ruthven, Dornie, IV2 4UA, 1808 521 306  
**SCOTTISH FLAIR ART GALLERY**, 11 Bank Street, IV1 1QY, 01463 248 500

## Inverness-shire

**CARRBRIDGE ARTISTS' STUDIO**, Main Street, Cairngorms National Park, Carrbridge, PH23 3AS, 01479 841 328, www.carrbridgestudio.com, allice@carrbridgestudio.com  
 Work by resident artists Jeff & Allice  
**GLENINNAN STATION MUSEUM**, Station Cottage, Gleninnan, PH37 4LT, 01997 722 295  
**BEN NEVIS DISTILLERY** (FORT WILLIAM), Lochy Station, Fort William, PH33 6TL, 01397 702476, Fax: 01397 702768, www.bennevisdistillery.com, info@bennevisdistillery.com  
**Colin of Arran**  
 STUDIO 4, Shore Road, Lamnah, KA27 8LA, 01776 600 919, www.studio4arran.co.uk, beyoung@ymail.com  
 Lively contemporary art, Masako Ritchie, Barbara Young, Scott Irvine, Kirti Mandir, R. Lele new works by J. Broekhuizen

## Kirkcudbright

**CORNERWAYS STUDIO**, 7 Selkirk Road, DG6 4BL, 01557 331 630, www.cornerways.co.uk  
 Miniature paintings & larger works in oil, pastel & watercolour by Jane B Gibson  
**JO GAGLANT TEXTILE ART**, Ironstones, 70 High Street, DG6 4JL, 01557 331 130, www.jogalant.co.uk, info@jogalant.co.uk  
**IONA GALLERY**, Duke Street, PH21 1JG, 01540 664 535  
 Regular exhibitions by local artists in 'handmade in the cairngorms' Plus national/international collections each month  
**Lancashire**  
**BLACKBURN MUSEUM & ART GALLERY**, Museum Street, Blackburn, BB1 7AJ, 01254 667 130  
 Call for details  
**BOLTON MUSEUM ART GALLERY & AQUARIUM**, Le Mans Crescent, Bolton, BL1 1SE, 01204 332 211  
 Call for details  
**KEN BROMLEY ART SUPPLIES**, Carzon House, Marston Road, Bolton, BL1 4RW, 01204 381900, Fax: 01204 381123, www.artsupplies.co.uk, sales@artsupplies.co.uk  
**BACK-RIDGE GALLERY**, Twiter Lane, Waddington, Clitheroe, BB73 0Q, 01200 427304  
 Former working fabric has been transformed into a work-house for local designers and craftsmen  
**PETER SCOTT GALLERY**, Lancaster University, L16 7SX, 01524 594 151, Fax: 01524 947 298

## Larbert

**BARBARA DAVIDSON POTTERY**, Muirhall Farm, (10 mins from the Falkirk Wheel), Stirlingshire, FK5 4EW, 01324 554 430, www.barbara-davidson.com, mailroom@barbara-davidson.com  
 Barbara Davidson - fine handthrown stoneware. Products sent worldwide  
**Leeds**  
**HAREWOOD HOUSE**, Harewood House, Trust, Harewood, Wetherby, LS17 9LG, 0113 218 1100  
 Spring at Harewood  
 April 3 - July 5  
 Mr Turner and Mr Girtin: The Gallery Years. A fresh look at the relationship between AMW Turner and his contemporary Thomas Girtin  
**HENRY MOORE INSTITUTE**, 74 The Headrow, LS1 3AA, 0113 234 3158  
 Until April 19  
 A Study of Modern Japanese Sculpture. Sculpture and installation  
**LEDS CITY GALLERY**, The Headrow, LS1 3AA, 0113 247 8626  
 April 16 - 19  
 Emma Hopkins and Sarah Jane Moon. Inside Portraits. Portraits  
**ROYAL SOCIETY OF PORTRAIT PAINTERS**. Mixed media  
**THE QUEEN'S GALLERY**, Buckingham Palace, SW1A 1AA, 0207 766 7301, www.royalcollection.org.uk, bookinginfo@royalcollection.org.uk  
 March 27 - April 5  
 UK. Explores the qualities that make this rare and precious metal an enduring expression of high status, both caribly and divine  
 March 20 - October 11  
 Painting Paradise: The Art of the Garden. Draws on oil paintings, works on paper, books, manuscripts and decorative arts  
 Until January 13 2016  
 Waterloo at Windsor: 1815-2015. Prints, drawings and archival material  
**THE ROYAL ACADEMY OF ARTS**, Burlington House, Piccadilly, W1J 0BD, 0207 300 8000, Fax: 0207 300 8013  
 Until April 10  
 Van Dyck to Cézanne. Rubens and His Legacy. Masterpieces  
 Until June 7  
 Richard Diebenkorn  
**THE ROYAL HOSPITAL**, Royal Hospital Road, Chelsea, SW3 4SR, 0207 881 5200  
**BROADBENT GALLERY**, 25 Chepstow Corner, Chepstow Place, W2 4XE, 0207 229 8811, Fax: 0207 229 8833

## Liverpool

**THE STEWARTRY MUSEUM**, 47 St Mary's Street, Dunfermline & Galway, DG6 4JL, 01557 330223, Fax: 01557 33162  
**KIRKCUDBRIGHT TOWN HALL**, Town Hall, St Mary Street, DG6 4AA, 01557 331889  
**TOLBOOTH ART CENTRE**, High Street, DG6 4JL, 01557 331 556, Fax: 01557 330 005  
**THE FAED GALLERY**, The Mill on the Fleet Visitor Centre, 56 High Street, Gatehouse of Fleet, DG7 2HP, 01557 814 458  
**NORTH GLEN GALLERY**, North Glen, Palenke, Castle Douglas, DG7 1PS, 01566 600 200, Fax: 01566 600 200  
 Exhibitions open studio, glass-blowing, oil lamps, chandeliers, wire and wicker. Call for details  
**THE NAIL FACTORY**, 56 Southwick Road, Dalbeattie, Dumfries & Galloway, DG5 4EW, 01556 611 686, www.naillfactory.org.uk, info@naillfactory.org.uk  
 March 2 - 31  
 Jennifer Walker. Photography  
 April 27 - May 2  
 Queens Petal Hall. Upcycled Textiles  
**Kyle**  
**THE KYLE ART MARKET**, Station Road, Kyle of Lochalsh, IV40 8AE, 01599 530 039  
 Judith Annan. Currie paintings  
**Lanarkshire**  
**IRONWORKS GALLERY**, Summerlee Heritage Park, Heritage Way, Coatbridge, ML5 1JY  
 Working studio and gallery -

## The Guide

**QD**, 01236 431 261, Fax: 01236 440 429  
 Call for details  
**GOLD AND SILVER-ETC ART GALLERY**, 41 High Street, ML11 0TU, 01555 665 342  
 Work by June Shirreffs, inc. Bespoke jewellery, Quality handbags  
**WILLIAM WILSON FINE ART PHOTOGRAPHER**, 75 Hayford Road, ML11 9AU, 01555 660 023  
 Limited edition giclée fine art prints and canvases  
**SUMMERLEE MUSEUM**, Heritage Way, Coatbridge, ML5 1QD, 01236 638460  
**KILN SERVICES**, Unit 8/11, Whistlerby Park Industrial Estate, Hamilton, ML3 0ED, 01698 822032, www.kiln-services.co.uk, sales@kiln-services.co.uk  
 Provides kilns, clays and pottery supplies  
**Lancashire**  
**BLACKBURN MUSEUM & ART GALLERY**, Museum Street, Blackburn, BB1 7AJ, 01254 667 130  
 Call for details  
**BOLTON MUSEUM ART GALLERY & AQUARIUM**, Le Mans Crescent, Bolton, BL1 1SE, 01204 332 211  
 Call for details  
**KEN BROMLEY ART SUPPLIES**, Carzon House, Marston Road, Bolton, BL1 4RW, 01204 381900, Fax: 01204 381123, www.artsupplies.co.uk, sales@artsupplies.co.uk  
**BACK-RIDGE GALLERY**, Twiter Lane, Waddington, Clitheroe, BB73 0Q, 01200 427304  
 Former working fabric has been transformed into a work-house for local designers and craftsmen  
**PETER SCOTT GALLERY**, Lancaster University, L16 7SX, 01524 594 151, Fax: 01524 947 298

## Liverpool

**THE STEWARTRY MUSEUM**, 47 St Mary's Street, Dunfermline & Galway, DG6 4JL, 01557 330223, Fax: 01557 33162  
**KIRKCUDBRIGHT TOWN HALL**, Town Hall, St Mary Street, DG6 4AA, 01557 331889  
**TOLBOOTH ART CENTRE**, High Street, DG6 4JL, 01557 331 556, Fax: 01557 330 005  
**THE FAED GALLERY**, The Mill on the Fleet Visitor Centre, 56 High Street, Gatehouse of Fleet, DG7 2HP, 01557 814 458  
**NORTH GLEN GALLERY**, North Glen, Palenke, Castle Douglas, DG7 1PS, 01566 600 200, Fax: 01566 600 200  
 Exhibitions open studio, glass-blowing, oil lamps, chandeliers, wire and wicker. Call for details  
**THE NAIL FACTORY**, 56 Southwick Road, Dalbeattie, Dumfries & Galloway, DG5 4EW, 01556 611 686, www.naillfactory.org.uk, info@naillfactory.org.uk  
 March 2 - 31  
 Jennifer Walker. Photography  
 April 27 - May 2  
 Queens Petal Hall. Upcycled Textiles  
**Kyle**  
**THE KYLE ART MARKET**, Station Road, Kyle of Lochalsh, IV40 8AE, 01599 530 039  
 Judith Annan. Currie paintings  
**Lanarkshire**  
**IRONWORKS GALLERY**, Summerlee Heritage Park, Heritage Way, Coatbridge, ML5 1JY  
 Working studio and gallery -

## Liverpool

**QD**, 01236 431 261, Fax: 01236 440 429  
 Call for details  
**GOLD AND SILVER-ETC ART GALLERY**, 41 High Street, ML11 0TU, 01555 665 342  
 Work by June Shirreffs, inc. Bespoke jewellery, Quality handbags  
**WILLIAM WILSON FINE ART PHOTOGRAPHER**, 75 Hayford Road, ML11 9AU, 01555 660 023  
 Limited edition giclée fine art prints and canvases  
**SUMMERLEE MUSEUM**, Heritage Way, Coatbridge, ML5 1QD, 01236 638460  
**KILN SERVICES**, Unit 8/11, Whistlerby Park Industrial Estate, Hamilton, ML3 0ED, 01698 822032, www.kiln-services.co.uk, sales@kiln-services.co.uk  
 Provides kilns, clays and pottery supplies  
**Lancashire**  
**BLACKBURN MUSEUM & ART GALLERY**, Museum Street, Blackburn, BB1 7AJ, 01254 667 130  
 Call for details  
**BOLTON MUSEUM ART GALLERY & AQUARIUM**, Le Mans Crescent, Bolton, BL1 1SE, 01204 332 211  
 Call for details  
**KEN BROMLEY ART SUPPLIES**, Carzon House, Marston Road, Bolton, BL1 4RW, 01204 381900, Fax: 01204 381123, www.artsupplies.co.uk, sales@artsupplies.co.uk  
**BACK-RIDGE GALLERY**, Twiter Lane, Waddington, Clitheroe, BB73 0Q, 01200 427304  
 Former working fabric has been transformed into a work-house for local designers and craftsmen  
**PETER SCOTT GALLERY**, Lancaster University, L16 7SX, 01524 594 151, Fax: 01524 947 298

## Liverpool

**QD**, 01236 431 261, Fax: 01236 440 429  
 Call for details  
**GOLD AND SILVER-ETC ART GALLERY**, 41 High Street, ML11 0TU, 01555 665 342  
 Work by June Shirreffs, inc. Bespoke jewellery, Quality handbags  
**WILLIAM WILSON FINE ART PHOTOGRAPHER**, 75 Hayford Road, ML11 9AU, 01555 660 023  
 Limited edition giclée fine art prints and canvases  
**SUMMERLEE MUSEUM**, Heritage Way, Coatbridge, ML5 1QD, 01236 638460  
**KILN SERVICES**, Unit 8/11, Whistlerby Park Industrial Estate, Hamilton, ML3 0ED, 01698 822032, www.kiln-services.co.uk, sales@kiln-services.co.uk  
 Provides kilns, clays and pottery supplies  
**Lancashire**  
**BLACKBURN MUSEUM & ART GALLERY**, Museum Street, Blackburn, BB1 7AJ, 01254 667 130  
 Call for details  
**BOLTON MUSEUM ART GALLERY & AQUARIUM**, Le Mans Crescent, Bolton, BL1 1SE, 01204 332 211  
 Call for details  
**KEN BROMLEY ART SUPPLIES**, Carzon House, Marston Road, Bolton, BL1 4RW, 01204 381900, Fax: 01204 381123, www.artsupplies.co.uk, sales@artsupplies.co.uk  
**BACK-RIDGE GALLERY**, Twiter Lane, Waddington, Clitheroe, BB73 0Q, 01200 427304  
 Former working fabric has been transformed into a work-house for local designers and craftsmen  
**PETER SCOTT GALLERY**, Lancaster University, L16 7SX, 01524 594 151, Fax: 01524 947 298

## Liverpool

**QD**, 01236 431 261, Fax: 01236 440 429  
 Call for details  
**GOLD AND SILVER-ETC ART GALLERY**, 41 High Street, ML11 0TU, 01555 665 342  
 Work by June Shirreffs, inc. Bespoke jewellery, Quality handbags  
**WILLIAM WILSON FINE ART PHOTOGRAPHER**, 75 Hayford Road, ML11 9AU, 01555 660 023  
 Limited edition giclée fine art prints and canvases  
**SUMMERLEE MUSEUM**, Heritage Way, Coatbridge, ML5 1QD, 01236 638460  
**KILN SERVICES**, Unit 8/11, Whistlerby Park Industrial Estate, Hamilton, ML3 0ED, 01698 822032, www.kiln-services.co.uk, sales@kiln-services.co.uk  
 Provides kilns, clays and pottery supplies  
**Lancashire**  
**BLACKBURN MUSEUM & ART GALLERY**, Museum Street, Blackburn, BB1 7AJ, 01254 667 130  
 Call for details  
**BOLTON MUSEUM ART GALLERY & AQUARIUM**, Le Mans Crescent, Bolton, BL1 1SE, 01204 332 211  
 Call for details  
**KEN BROMLEY ART SUPPLIES**, Carzon House, Marston Road, Bolton, BL1 4RW, 01204 381900, Fax: 01204 381123, www.artsupplies.co.uk, sales@artsupplies.co.uk  
**BACK-RIDGE GALLERY**, Twiter Lane, Waddington, Clitheroe, BB73 0Q, 01200 427304  
 Former working fabric has been transformed into a work-house for local designers and craftsmen  
**PETER SCOTT GALLERY**, Lancaster University, L16 7SX, 01524 594 151, Fax: 01524 947 298

## Liverpool

**QD**, 01236 431 261, Fax: 01236 440 429  
 Call for details  
**GOLD AND SILVER-ETC ART GALLERY**, 41 High Street, ML11 0TU, 01555 665 342  
 Work by June Shirreffs, inc. Bespoke jewellery, Quality handbags  
**WILLIAM WILSON FINE ART PHOTOGRAPHER**, 75 Hayford Road, ML11 9AU, 01555 660 023  
 Limited edition giclée fine art prints and canvases  
**SUMMERLEE MUSEUM**, Heritage Way, Coatbridge, ML5 1QD, 01236 638460  
**KILN SERVICES**, Unit 8/11, Whistlerby Park Industrial Estate, Hamilton, ML3 0ED, 01698 822032, www.kiln-services.co.uk, sales@kiln-services.co.uk  
 Provides kilns, clays and pottery supplies  
**Lancashire**  
**BLACKBURN MUSEUM & ART GALLERY**, Museum Street, Blackburn, BB1 7AJ, 01254 667 130  
 Call for details  
**BOLTON MUSEUM ART GALLERY & AQUARIUM**, Le Mans Crescent, Bolton, BL1 1SE, 01204 332 211  
 Call for details  
**KEN BROMLEY ART SUPPLIES**, Carzon House, Marston Road, Bolton, BL1 4RW, 01204 381900, Fax: 01204 381123, www.artsupplies.co.uk, sales@artsupplies.co.uk  
**BACK-RIDGE GALLERY**, Twiter Lane, Waddington, Clitheroe, BB73 0Q, 01200 427304  
 Former working fabric has been transformed into a work-house for local designers and craftsmen  
**PETER SCOTT GALLERY**, Lancaster University, L16 7SX, 01524 594 151, Fax: 01524 947 298

## Liverpool

**QD**, 01236 431 261, Fax: 01236 440 429  
 Call for details  
**GOLD AND SILVER-ETC ART GALLERY**, 41 High Street, ML11 0TU, 01555 665 342  
 Work by June Shirreffs, inc. Bespoke jewellery, Quality handbags  
**WILLIAM WILSON FINE ART PHOTOGRAPHER**, 75 Hayford Road, ML11 9AU, 01555 660 023  
 Limited edition giclée fine art prints and canvases  
**SUMMERLEE MUSEUM**, Heritage Way, Coatbridge, ML5 1QD, 01236 638460  
**KILN SERVICES**, Unit 8/11, Whistlerby Park Industrial Estate, Hamilton, ML3 0ED, 01698 822032, www.kiln-services.co.uk, sales@kiln-services.co.uk  
 Provides kilns, clays and pottery supplies  
**Lancashire**  
**BLACKBURN MUSEUM & ART GALLERY**, Museum Street, Blackburn, BB1 7AJ, 01254 667 130  
 Call for details  
**BOLTON MUSEUM ART GALLERY & AQUARIUM**, Le Mans Crescent, Bolton, BL1 1SE, 01204 332 211  
 Call for details  
**KEN BROMLEY ART SUPPLIES**, Carzon House, Marston Road, Bolton, BL1 4RW, 01204 381900, Fax: 01204 381123, www.artsupplies.co.uk, sales@artsupplies.co.uk  
**BACK-RIDGE GALLERY**, Twiter Lane, Waddington, Clitheroe, BB73 0Q, 01200 427304  
 Former working fabric has been transformed into a work-house for local designers and craftsmen  
**PETER SCOTT GALLERY**, Lancaster University, L16 7SX, 01524 594 151, Fax: 01524 947 298

## Liverpool

**QD**, 01236 431 261, Fax: 01236 440 429  
 Call for details  
**GOLD AND SILVER-ETC ART GALLERY**, 41 High Street, ML11 0TU, 01555 665 342  
 Work by June Shirreffs, inc. Bespoke jewellery, Quality handbags  
**WILLIAM WILSON FINE ART PHOTOGRAPHER**, 75 Hayford Road, ML11 9AU, 01555 660 023  
 Limited edition giclée fine art prints and canvases  
**SUMMERLEE MUSEUM**, Heritage Way, Coatbridge, ML5 1QD, 01236 638460  
**KILN SERVICES**, Unit 8/11, Whistlerby Park Industrial Estate, Hamilton, ML3 0ED, 01698 822032, www.kiln-services.co.uk, sales@kiln-services.co.uk  
 Provides kilns, clays and pottery supplies  
**Lancashire**  
**BLACKBURN MUSEUM & ART GALLERY**, Museum Street, Blackburn, BB1 7AJ, 01254 667 130  
 Call for details  
**BOLTON MUSEUM ART GALLERY & AQUARIUM**, Le Mans Crescent, Bolton, BL1 1SE, 01204 332 211  
 Call for details  
**KEN BROMLEY ART SUPPLIES**, Carzon House, Marston Road, Bolton, BL1 4RW, 01204 381900, Fax: 01204 381123, www.artsupplies.co.uk, sales@artsupplies.co.uk  
**BACK-RIDGE GALLERY**, Twiter Lane, Waddington, Clitheroe, BB73 0Q, 01200 427304  
 Former working fabric has been transformed into a work-house for local designers and craftsmen  
**PETER SCOTT GALLERY**, Lancaster University, L16 7SX, 01524 594 151, Fax: 01524 947 298

## The Guide

**QD**, 01236 431 261, Fax: 01236 440 429  
 Call for details  
**GOLD AND SILVER-ETC ART GALLERY**, 41 High Street, ML11 0TU, 01555 665 342  
 Work by June Shirreffs, inc. Bespoke jewellery, Quality handbags  
**WILLIAM WILSON FINE ART PHOTOGRAPHER**, 75 Hayford Road, ML11 9AU, 01555 660 023  
 Limited edition giclée fine art prints and canvases  
**SUMMERLEE MUSEUM**, Heritage Way, Coatbridge, ML5 1QD, 01236 638460  
**KILN SERVICES**, Unit 8/11, Whistlerby Park Industrial Estate, Hamilton, ML3 0ED, 01698 822032, www.kiln-services.co.uk, sales@kiln-services.co.uk  
 Provides kilns, clays and pottery supplies  
**Lancashire**  
**BLACKBURN MUSEUM & ART GALLERY**, Museum Street, Blackburn, BB1 7AJ, 01254 667 130  
 Call for details  
**BOLTON MUSEUM ART GALLERY & AQUARI**

# The ArtWork

Jane Joseph, Leon Kossoff, Michael Rothenstein, Glenn Suijo and Edward Toledano and others. No Set Rules. A century of selected works from the Schiele Collection  
BRITANNIA CENTRE, Britannia Road, North Finchley, N12 9RU, 0208 445 7070

THE CATTO CENTRE, 100 Health Street, NW1 1DP, 02027 435 6660, Fax: 0207 431 5620

March 5 - 24  
Chuck Elliott.

HIGHGATE GALLERY, 11 South Grove, N6 6BS, 0208 340 3343, Fax: 0208 340 5632

THE NOBLE SAGE ART GALLERY, 2a Fortis Green, N2 9EL, 0208 883 7303, Fax: 0208 883 7367

March 1 - April 30  
Tasaduq Sohail. New Ink and Watercolour Paintings. Works from the late 1970s and early 1980s.

ABBOT & HOLDER, 30 Museum Street, WC1A 1LH, 0207 637 3981, Fax: 0207 631 0575

March 19 - 28  
Flora McDonnell. From Park Royal to Orkney and Donegal. Recent oil paintings and works on paper.

AUSTIN DESMOND FINE ART, Piel Bull Yare, 68/69 Great Russell Street, WC1B 3BN, 0207 242 4443, Fax: 0207 404 4400

CONTEMPORARY APPLIED ARTS, 2 Percy Street, W1T 1DD, 0207 436 2344

Until March 8  
Michael Flynn, Sus Parakeva, Shellie Holden, Jennie Moncur, Fiona Rutherford and Peter Coates. Resolutions and Transformations. Mixed media.

CURVEY & NEW ACADEMY GALLERY, 34 Windmill Street, W1T 2JR, 0207 323 4700, Fax: 0207 436 3059

March 5 - 28  
Thirza Kotzen. Skyhigh (And the Space Between).

DEBURY ART & THE CONINGSBY GALLERY, 30 Tottenham Street, W1T 4RJ, 0207 636 7478

THE GALLERY AT 94, 94 Cleveland Street, W1F 6NW, 0207 388 7868

OCTOBER GALLERY, 24 Old Gloucester Street, WC1N 3AL, 0207 242 7367

Until March 26  
Various artists. El Anatsui. Sculpture.

April 2 - May 9  
Kenji Yoshida (1924 - 2009). Retrospective.

THE COLOMB ART GALLERY, 52A Grove Street, Marylebone, W1U 7EA, 0207 487 5118

RAILINGS GALLERY, 5 New Cavendish Street, W1G 8JT, 0207 935 1114, Fax: 0207 486 9250

SHERIDAN RUSSELL GALLERY, 16 Crawford Street, W1H 1BS, 0207 925 0250

THOMPSON'S GALLERY, 15 New Cavendish Street, W1G 9UB, 0207 935 3595

ANNELY JUDA FINE ART, 23 Deering Street, W15 1AW, 0207 629 7578, Fax: 0207 491 2139

Until March 21  
Tadashi Kawamata. Stairs. Installation.

April 1 - May 9  
June Green.

April 1 - May 9  
Roger Ackling.

THE FLEMING COLLECTION, 13 Berkeley Street, W1J 8DU, 0207 409 8730

HAMILTONS GALLERY, 13 Cavendish Place, W1K 4JF, 0207 499 9494, Fax: 0207 629 9919

Until April 30  
Something for Everyone. Group exhibition.

OPERA GALLERY, 134 New Bond Street, W1S 2TF, 0207 491 2999, Fax: 0207 409 0910

SARAH MYERS-COUGH FINE ART, 15-16 Brooks Mews, Off Davies Street, W1K 4DS, 0207 495 0069

AGNEWS GALLERY, 35 Albemarle Street, W1S 4JD, 0207 290 9250, Fax: 0207 429 4359

THE AIR GALLERY, 34 Dover Street, W1S 4NE, 01285 651072

ALBEMARLE GALLERY, 49 Albemarle Street, W1S 4JR, 0207 499 1616, Fax: 0207 499 1717

Until March 14  
Maxwell Doug. Figures in solitude new work. Paintings.

APRICOT GALLERY, 27 Albemarle Street, Mayfair, W1S 4HZ, 0207 491 9887

BELGRAVIA GALLERY, 45 Albemarle Street, W1S 4JL, 0207 495 1010

Until March 23  
Lincoln Seligman, David Eley and Carl Laubin. Art Meets Wine. Collaboration.

March 24 - May 8  
Monroe Hodder. New works

CONNAUGHT BROWN, 2 Albemarle Street, W1S 4HD, 0207 408 0362, Fax: 0207 495 3137

April 1 - May 16

## Dear ArtWork - a reader writes...

*Dear artWORK folk,  
The more I look at the world the more I begin to feel as if I'm from another planet - so much wealth and greed alongside so much poverty and need. Private enterprise = good, state-run bodies = inefficient and bad, with little notice taken of the paucity of good produced by privatised "competitive" services, nor of how well the East Coast railway did while state-run. It seems ideology rules, ok!  
So it's good to open artWORK and always find incisive writing that helps me to believe that I'm not just old and out of touch.  
Obviously, as I'm interested in the arts, I don't believe that we should all wear hair shirts and eat only lentils, but I do feel that we need to reassess basic services such as rail, post, energy and so on, and run them for the benefit of all, not for shareholders.  
Do keep the comment coming, alongside the excellent arts "stuff". So much seems to be slipping away without people noticing what they're losing, until it's gone, so keeping the spotlight on it all is very important.  
Many thanks & best wishes  
Jackie Machling (Mrs.)*

\*ArtWork welcomes correspondence - criticism as well as praise! Write to ArtWork, PO Box 3, AB41 9EA, or e-mail artwork@famedram.com. Sorry, we don't do Facebook, Twitter, blogs or any of that time-wasting, narcissistic drivel, same as we do everything we can to avoid using Amazon.

**boo vake**  
original gifts from artists & designers

5 wategate perth ph1 5tf 01738 442263  
www.boovake.co.uk

**Poldrate Arts & Crafts Centre**, Haddington, East Lothian, EH41 4D

**MEMBERS ANNUAL EXHIBITION**  
Saturday 11th & Sunday 12th April  
1pm - 4.30pm  
Poldrate Granary  
3rd Floor  
Stained Glass demonstrations and mini workshops (Saturday only) £5 each bookable on the day.  
Everybody welcome  
www.pacc.org.uk  
FREE entry  
Meet our tutors at www.paccutors.org.uk

**FISHER STUDIO & GALLERY**  
Pittenweem Fife  
Spring Exhibition  
March 21 to June 9

James Fraser Jan Fisher Angela Lawrence George Muir Jennifer Pettigrew Doug Cocker

plus a selection of craftwork & limited edition giclee prints  
10 - 5 8 days (closed Tues)

www.fishergallery.co.uk

**the ceilidh place ullapool**

CHANGIN' SCOTLAND  
27 - 28 March  
An exciting social & cultural weekend  
Tel: 01854 612103  
e: stay@theceilidhplace.com  
www.theceilidhplace.com

CONTEMPORARY ART, Market Buildings, Thomas Street, Northcote Quarter, M4 1LE, 0161 832 7271, Fax: 0161 832 7513

Call Court, EH45 8AG, 01721 722875

Craft centre with 4 studios - Visit for a unique gift. Dummydeed Studio Porcelain - Ceramics Duncan Hood (01721) 722 875. Woodworks by Bruce Prost - (01721) 724 442. Jewellery by Lynn Tindale - (01721) 720 112

TRAQUAIR HOUSE, Traquair House, Innerleithen, EH44 6PW, 01896 830 323, www.traquair.co.uk, enquiries@traquair.co.uk

May 1 - September 30  
Art In The Pavilion 2015  
Contemporary Scottish artists' exhibitions

DAWYCK BOTANIC GARDEN, Slob, EH45 9JU, 01721 760254  
Until May 3  
Edward Bowen. Dawyck Delight. Landscape

CHAPEL STREET GALLERY, 19 Chapel Street, Innerleithen, EH44 6EJ, 01896 833 448, www.chapelstreetgallery.co.uk, chapelstgally@btinternet.co.uk

NEW works by members of Royal Scottish Society of Painters including Watercolour Also: affordable art

MOY MACKAY GALLERY, 17 Northgate, EH45 8RX, 01721 722116, www.moymackaygallery.co.uk

Contemporary Art and Craft from Scotland

**Perth**  
PERTH MUSEUM & ART GALLERY, 78 George Street, PH1 5LH, 01738 632 488  
Until May 6  
Tim Stead: Object maker and seed sower

FERGUSON GALLERY, Marshall Place, PH2 8NS, 01738 783 425

TAYBERRY GALLERY, 19 Princes Street, PH2 8NG, 01738 440 899

British made art and design from a range of disciplines including jewellery, ceramics, glass, wood and more

FRAMES CONTEMPORARY GALLERY, 10 Victoria Street, PH2 8LW, 01738 631 085, Fax: 01738 631 085, www.framesgallery.co.uk, info@framesgallery.co.uk

March 7 - April 4  
Dunfermline Printmakers Workshop.

BOO VAKE (BUTH BHEAG), 5 Wategate, PH1 5TF, 01738 442263, www.boovake.co.uk, mail@boovake.co.uk

Original gifts from artists, makers & designers from Scotland and the UK

JARDINE GALLERY & WORKSHOP, 45 New Row, PH1 5QA, 01738 621 836

PERTH THEATRE, 188 High Street, PH1 5UJ, 01738 621 031  
Call for full listings

PERTH CONCERT HALL, MH1 Street, PH1 5HZ, 01738 621 031  
March 23 - April 23  
And the Beat Goes On. A story about music, secrets & survival

Until June 28  
Juhó Poljohon, Martin Roscoe, Steven Osborne, Alasdair James, Llyr Williams and James Beallien. Perth Piano Sundays. Perth Piano Series

SERENA CORDA and Michelle Williams

ASHMOLEAN MUSEUM, Beaumont Street, OX1 2PH, 01865 278 000, Fax: 01865 278018

March 3 - June 1  
Bengal and Modernity. Early 20th-century Art in India

**Oxford**  
MODERN ART OXFORD, 30 Pambooke Street, OX1 1HP, 01865 722 733

Until March 8  
William Morris and Andy Warhol. Love and Death. Works

Until March 22  
Serena Corda and Michelle Williams

ASHMOLEAN MUSEUM, Beaumont Street, OX1 2PH, 01865 278 000, Fax: 01865 278018

March 3 - June 1  
Bengal and Modernity. Early 20th-century Art in India

**Paisley**  
PAISLEY MUSEUM & ART GALLERY, 60 High Street, Paisley, PA1 2BA, 0141 889 3151, www.renfrewshire.gov.uk

Check website for more details  
May 23 - June 27 (Receiving Days)  
April 23 - 25  
Paisley Art Institute 127th Annual Exhibition. Call for entries.

PAISLEY ART CENTRE, New Street, PA1 1EZ, 0141 887 1010, 0141 887 6300, www.renfrewshire.gov.uk, arts@renfrewshire.gov.uk

Regular performances and events, call for listings

**Peebles**  
TWEEDHEAD MUSEUM AND GALLERY, Chambers Institution, High Street, EH45 8AG, 01721 724 820

THE CAIRNS GALLERY, 72 High Street, EH45 8SW, 01721 729441, Fax: 01721 729488

TWEED ART (FORMERLY MCHARDY'S ART), 1 Belford Square, EH45 8SU, 01721 720 246, www.tweedart.co.uk, info@tweedart.co.uk

Artists and craftmakers gallery  
PEEBLES CRAFT CENTRE, 101 Call Court, EH45 8AG, 01721 722875

Craft centre with 4 studios - Visit for a unique gift. Dummydeed Studio Porcelain - Ceramics Duncan Hood (01721) 722 875. Woodworks by Bruce Prost - (01721) 724 442. Jewellery by Lynn Tindale - (01721) 720 112

TRAQUAIR HOUSE, Traquair House, Innerleithen, EH44 6PW, 01896 830 323, www.traquair.co.uk, enquiries@traquair.co.uk

May 1 - September 30  
Art In The Pavilion 2015  
Contemporary Scottish artists' exhibitions

DAWYCK BOTANIC GARDEN, Slob, EH45 9JU, 01721 760254  
Until May 3  
Edward Bowen. Dawyck Delight. Landscape

CHAPEL STREET GALLERY, 19 Chapel Street, Innerleithen, EH44 6EJ, 01896 833 448, www.chapelstreetgallery.co.uk, chapelstgally@btinternet.co.uk

NEW works by members of Royal Scottish Society of Painters including Watercolour Also: affordable art

MOY MACKAY GALLERY, 17 Northgate, EH45 8RX, 01721 722116, www.moymackaygallery.co.uk

Contemporary Art and Craft from Scotland

**Orkney**  
PIER ARTS CENTRE, Victoria Street, Stromness, KW16 3AA, 01856 850 209, Fax: 01856 851 462  
Until April 11  
Stargazing - Orkney's Art Graduates 2013 & 2014.

THE GALLERY, Pierowall, West Pier, KW17 2BZ, 01857 677 770

On going: Contemporary art of Westray

WATERFRONT GALLERY, 128 Victoria Street, Stromness, KW16 3BU, 01856 850 644, www.waterfrontgallery.co.uk

In the shop: Orkney silver, pottery, knitwear and gifts in the Back Room Local paintings, prints and designer cards

YELLOWBIRD GALLERY, 101 Cottage, Birsay, KW17 2LT, 01856 711 360

Sculptor John Thompson and artist Jennifer Williams

SHORELINES GALLERY & STUDIO, Maitland Place, Finstown, Orkney Isles, KW17 2EQ, 01856 761142, www.shorelinesgal- lery@boovake.co.uk

Original gallery & shop selling prints & watercolours by Orkney artist Jane Givie

THE TAIT GALLERY, 21 Margaret Hope, KW17 2SL

NORTHLIGHT STUDIO, Stromness, KW16 3BY, 01856 850 671

Specialist tapestry studio and gallery in the historic harbour of Stromness

BILL MCARTHUR SEASCAPE ART, 3 Lethan, Sanday, KW17 2BP

**Nairn**  
NAIRN BOOK AND ART FESTIVAL, 53 King Street, IV12 4NP, 01467 451 804  
September 1 - 6  
2015 Festival

BOATHOUSE, Auldrean, IV12 5TE, 01667 454 896, Fax: 01667 455 469

Changing exhibitions by Scots contemporary artists

CAWDOR CASTLE, Cawdor, IV12 5RD, 01667 404 401, Fax: 01667 404 674

THE COURT HOUSE, THE SEAMAN'S HALL, IV12 4AU, 01667 458510

plus a selection of craftwork & limited edition giclee prints  
10 - 5 8 days (closed Tues)

www.fishergallery.co.uk

THE ATHOLL GALLERY, 6 Atholl Street, Dunkeld, PH18 9AR, 01350 728 855

March 7 - May 11  
Spring Mixed Exhibition

FORTINGALL ART, Malteno Hall, (8 miles W. of Aberfeldy off B846), Aberfeldy, PH15 2LL, 01484 870 254, Fax: 01887 830 265, www.fortingallart.co.uk

Secretary@fortingallart.co.uk

KILLIN GALLERY, Main Street, Killin, FK21 8AB, 01567 820 475

Ongoing exhibition of etchings and drypoints

RATTRAY COMMUNITY HALL, Balmoral Road, Rattray, Blairgowrie, PH10 7AB, 01250 87280

GALLERIA LUTTI, 16 Ancestor Square, Callander, FK17 8BL, 01877 339577, www.galleriatutti.co.uk, info@galleriatutti.co.uk

**Pitlochry**  
PITLOCHRY FESTIVAL THEATRE, Port-Na-Craig, PH16 5DR, 01796 484 626

JOHN MUIR TRUST - WILD SPACE, Tower House, Station Road, PH16 5AN, 01796 484975, www.jmt.org, admin@jmt.org

**Renfrewshire**  
CRAFTS OF CALDER GALLERY AND FRAMING, 8 High Street, Lochwood, PA12 4DA, 01505 844 990

MCLAREN MUSEUM & ART GALLERY, 15 Kelly Street, Greenock, PA16 8JX, 01475 715 624, www.inverclyde.gov.uk

KILBARCHAN EAST CHURCH HALL, Off Steeple Square, Kilbarchan, PA10 2JD

**Ross-shire**  
SOLAS GALLERY, Flowerdale Bay, Wester Ross, Gairloch, IV21 2UN, 01845 712626

Paintings, prints & ceramics by artists Rob Howard & Lyn Beckett

HEGEMUND MUSEUM OF CHILDHOOD, The Old Station, Strathpeffer, IV14 9DH, 01997 421 031

GROAM HOUSE MUSEUM, High Street, Rosemarkie, IV10 8UF, 01381 620 961, www.groamhouse.org.uk, curator@groamhouse.org.uk

THE CROMARTY GALLERY, 20 Church Street, Cromarty, IV11 8XA, 01381 600 816

INVERGORDON ARTS CENTRE, Invergordon, IV18 0EL, 01349 86647

**Selkirk**  
SCOTTISH BORDERS COUNCIL (MUSEUM & GALLERY), Municipal Buildings, High Street, T17 4JX

Da Gadderie - new exhibition space in the new Shetland Museum

THE TAIT GALLERY, 11c Union Street, Lerwick, ZE1 0ET, 01595 699 143

Jim Tait. Marine and landscape artist

BONHOOGA GALLERY, Weisdale Mill, Weisdale, ZE2 9JW, 01595 830 400

VAILA FINE ART, 61 Commercial Street, Lerwick, ZE1 0US, 01595 6937374

**St Andrews**  
FIFE CONTEMPORARY ART AND CRAFT (FCA&C), Town Hall, Queen's Gardens, KY16 9AD, 01334 474 610, Fax: 01334 474 610

FC&C & ST ANDREWS MUSEUM, Kinesburn Park, Doublyles Road, KY16 9TA, 01334 659 380

YOUNGER HALL, University of St Andrews, Music Centre, North Street, KY16 9AJ, 01334 462226

FRASER GALLERY, 53 South Street, KY16 9QR, 01334 479 647

ST ANDREWS MUSEUM GARDEN, Kinesburn Park, Doublyles Road, KY16 9DP, 01334 659380

Until March 8  
St Andrews-Scotland's International Poetry Festival 2015.

J & G INNES LTD, 107 South Street, KY16 9QW, 01334 472 174, www.jg-innes.co.uk, enquiries@jg-innes.co.uk

Stationery, Art Supplies, Books & Gifts

**Stirling**  
SMITH ART GALLERY & MUSEUM, Dumbarton Road,

through Newcastle's history, also Science Factory

HANCOCK MUSEUM, Barras Bridge, Haymarket, Newcastle upon Tyne, NE2 4JT, 0191 222 7418

'Venon': deadly cast of world's most poisonous creatures & plants

DISCOVERY MUSEUM, Blandford Square, Newcastle upon Tyne, NE1 4JA, 0191 232 6789

BALTIC - CENTRE FOR CONTEMPORARY ART, Gateshead Quays, South Shore Road, Gateshead, NE8 3BA, 0191 478 1810, Fax: 191 478 1922

Until April 19  
Jesse Wine. Ceramics

March 6 - May 31  
Jason Rhoades. Four Roads. Work.

BLAGDON GALLERY, landscape, Berwick Hill Road, Seaton Burn, NE13 6DA, 01670 789 944

Until May 24  
Sandy Murphy and David Martin. Later in The Year. New paintings

COLLECTIVE, Maple House, 28 Henderson Street, Bridge of Allan, FK9 4HR, 01786 359664, www.andcollective.co.uk, info@andcollective.co.uk

March 6 - April 16  
Liz Douglas. Out of the Mire. Drawings and paintings

April 17 - May 28  
Rob Hamilton

GARTMORE HOUSE, Gartmore House, Gartmore, FK3 3RS, 01877 382991, www.gartmorehouse.com, mail@gartmorehouse.com

Tutor-led watercolour painting holidays in the Loch Lomond and Trossachs National Park, Scotland.

**Sunderland**  
SUNDERLAND MUSEUM & ART GALLERY, Burdon Road, SR1 1PF, 0191 555 2323

Victorian Dreams watercolours from Tyne & Wear Museums' nationally-acclaimed collection

NATIONAL GLASS CENTRE, Liberty Walk, BR6 0GL, 0191 515 5555, Fax: 0191 515 5556

VARDY GALLERY, University of Sunderland, Ashbourne House, Riverside, Sunderland, SR2 7EF, 0191 515 2128

**Yorkshire**  
IMPRESSIONS GALLERY, Centenary Square, 29 Castlegate, Bradford, BD1 1SD, 01904 664724, Fax: 01274 734 635

Until May 16  
Myriam Abdelaziz, Tamara Abdul Hadi, Laura Bousimak, Tanya Habjougot, Dalia Khamsiy and Newsha Tavakolian

YORK ART GALLERY, Exhibition Square, York, YO1 7EW, 01904 687 087

NATIONAL MUSEUM OF PHOTOGRAPHY, Pictureville, Queensbury, Bradford, BD1 1NQ, 01274 203 305

YORKSHIRE SCULPTURE PARK, West Bretton, Wakefield, WF4 4LQ, 01924 832631, www.jsp.co.uk, info@jsp.co.uk

Until April 19  
Nick Crowe and Ian Rawlinson. Song for Coal. Audio-visual work

GALLERY ON THE GREEN, The Curator, Gallery on the Green, Upper Settle, BD24 9HG, 07908 792 713

March 1 - April 11  
D.J. Kelday. Digital Art

THE GALLERY UPSTAIRS, OF Main Square, (above Harlequin), Grassington, BD23 5AT, 01756 753099

INSPIRED BY... GALLERY, The Moors National Park Centre, Danby, Whitby, YO21 2NB, 01439 727 737, www.northyorkmoors.org.uk/visiting/see-and-do/inspired-by-gallery

Showcasing artists inspired by the North York Moors National Park

March 19 - April 14  
James McGairy, Peter Reynolds and Darrell Evans. Nature and the Environment.

Emerson Mayes. A Fascination with Fauna. Prints

April 17 - May 4  
Robert Dutton, Helen Patterson and Jo Garlick and Stef O'toole

Permanet: Proctor & Gamble Children's Gallery: Art on Tyneside.

Until May 16  
AR'VEUTURE Backpacks. Borrow a backpack and embark on an AR'VEUTURE tour in the gallery

HATTON GALLERY, University of Newcastle, Clarendon Road, Newcastle upon Tyne, NE1 7RU, 0191 222 6057

SHED PHOTOGRAPHIC GALLERY, 9 Side, Newcastle upon Tyne, NE1 3JE, 0191 232 2208

Pedal Power: The Art of Two Wheels.

# The ArtWork

## The Romans reach Dundee

THE ROMANS: Power & People is a wonderful exhibition that has arrived at the McManus in Dundee (its only Scottish showing) from the British Museum in London.

Contained within two small galleries, the exhibition divides its subject into five sections that range from Power to In Memoriam, each containing brief introductions and a wide range of objects: busts, helmets, vases and amphora, brooches, coins and, at the end, a marble sepulchral chest and other vestiges to the dead.

There are also large illustrations showing the inside of a Roman villa and a tessellated pavement and, if you're into Roman gods, a red, flat circular disc that enables you to dial up Jupiter or Mercury or Diana to find out what their insignia are and what benefits they might grant you.

The Dial a Deity is just one of a number of clever exhibition techniques. At the beginning of the exhibition is a time-line showing the Roman occupation and abandonment of Britain - their occupation lasted from 55 BC-AD 212. It is also a reminder that the Romans built one wall in northern England (Hadrian's) and another from the Firth of Forth to the Clyde, and that they built forts at Carpow, Abernethy, Perth and Kinross.

There is also an animated map of the

## TRADE COUNTER

**ART 'N' JOY**  
GALLERY AND BESPOKE PICTURE FRAMERS

www.artnjoy.co.uk  
52 Hamilton Street, Saltcoats, North Ayrshire KA21 5DS  
Tel 01294 472 222

**Kiln Services**  
Scotland Ltd  
Pottery and Kiln Supplies  
Clays, Glazes, Tools & Kilns

01698 822 032  
kiln-services.co.uk

**J & G INNES LTD**  
Stationery, Art Materials, Books & Gifts

107 South Street, St Andrews, Fife, KY16 9QW.  
Tel: 01334 472174 www.jg-innes.co.uk

# The ArtWork

Time Tunnel: a whirlwind tour through Newcastle's history, also Science Factory

HANCOCK MUSEUM, Barras Bridge, Haymarket, Newcastle upon Tyne, NE2 4JT, 0191 222 7418

'Venon': deadly cast of world's most poisonous creatures & plants

DISCOVERY MUSEUM, Blandford Square, Newcastle upon Tyne, NE1 4JA, 0191 232 6789

BALTIC - CENTRE FOR CONTEMPORARY ART, Gateshead Quays, South Shore Road, Gateshead, NE8 3BA, 0191 478 1810, Fax: 191 478 1922

Until April 19  
Jesse Wine. Ceramics

March 6 - May 31  
Jason Rhoades. Four Roads. Work.

BLAGDON GALLERY, landscape, Berwick Hill Road, Seaton Burn, NE13 6DA, 01670 789 944

Until May 24  
Sandy Murphy and David Martin. Later in The Year. New paintings

COLLECTIVE, Maple House, 28 Henderson Street, Bridge of Allan, FK9 4HR, 01786 359664, www.andcollective.co.uk, info@andcollective.co.uk

March 6 - April 16  
Liz Douglas. Out of the Mire. Drawings and paintings

April 17 - May 28  
Rob Hamilton

GARTMORE HOUSE, Gartmore House, Gartmore, FK3 3RS, 01877 382991, www.gartmorehouse.com, mail@gartmorehouse.com

Tutor-led watercolour painting holidays in the Loch Lomond and Trossachs National Park, Scotland.

**Sunderland**  
SUNDERLAND MUSEUM & ART GALLERY, Burdon Road, SR1 1PF, 0191 555 2323

Victorian Dreams watercolours from Tyne & Wear Museums' nationally-acclaimed collection

NATIONAL GLASS CENTRE, Liberty Walk, BR6 0GL, 0191 515 5555, Fax: 0191 515 5556

VARDY GALLERY, University of Sunderland, Ashbourne House, Riverside, Sunderland, SR2 7EF, 0191 515 2128

**Yorkshire**  
IMPRESSIONS GALLERY, Centenary Square, 29 Castlegate, Bradford, BD1 1SD, 01904 664724, Fax: 01274 734 635

Until May 16  
Myriam Abdelaziz, Tamara Abdul Hadi, Laura Bousimak, Tanya Habjougot, Dalia Khamsiy and Newsha Tavakolian

YORK ART GALLERY, Exhibition Square, York, YO1 7EW, 01904 687 087

NATIONAL MUSEUM OF PHOTOGRAPHY, Pictureville, Queensbury, Bradford, BD1 1NQ, 01274 203 305

YORKSHIRE SCULPTURE PARK, West Bretton, Wakefield, WF4 4LQ, 01924 832631, www.jsp.co.uk, info@jsp.co.uk

Until April 19  
Nick Crowe and Ian Rawlinson. Song for Coal. Audio-visual work

GALLERY ON THE GREEN, The Curator, Gallery on the Green, Upper Settle, BD24 9HG, 07908 792 713

March 1 - April 11  
D.J. Kelday. Digital Art

THE GALLERY UPSTAIRS, OF Main Square, (above Harlequin), Grassington, BD23 5AT, 01756 753099

INSPIRED BY... GALLERY, The Moors National Park Centre, Danby, Whitby, YO21 2NB, 01439 727 737, www.northyorkmoors.org.uk/visiting/see-and-do/inspired-by-gallery

Showcasing artists inspired by the North York Moors National Park

March 19 - April 14  
James McGairy, Peter Reynolds and Darrell Evans. Nature and the Environment.

Emerson Mayes. A Fascination with Fauna. Prints

April 17 - May 4  
Robert Dutton, Helen Patterson and Jo Garlick and Stef O'toole

Permanet: Proctor & Gamble Children's Gallery: Art on Tyneside.

Until May 16  
AR'VEUTURE Backpacks. Borrow a backpack and embark on an AR'VEUTURE tour in the gallery

HATTON GALLERY, University of Newcastle, Clarendon Road, Newcastle upon Tyne, NE1 7RU, 0191 222 6057

SHED PHOTOGRAPHIC GALLERY, 9 Side, Newcastle upon Tyne, NE1 3JE, 0191 232 2208

Pedal Power: The Art of Two Wheels.

**Highland Print Studio**  
Evening and weekend classes in printmaking and digital imaging.

For further details please visit:  
[www.highlandprintstudio.co.uk](http://www.highlandprintstudio.co.uk)

20 Bank Street, Inverness. IV1 1QU.  
t: 01463 718999 e: info@highlandprintstudio.co.uk

**FORTHCOMING COURSES @ PULP**

**Creative Paper - 28th & 29th March**

**Plant Papers - 18th & 19th April**

**Introduction to Paper - 3rd May**

**Japanese Binding - 13th & 14th June**

For more information call 0141 337 2842  
e-mail: [alison.paperprintbook@gmail.com](mailto:alison.paperprintbook@gmail.com)  
[www.paperartsworkshop.co.uk](http://www.paperartsworkshop.co.uk)  
WASPS, 77 Hanson St, Glasgow, G31 2HF

**PAPER ARTS WORKSHOP**

**north west highlands**

Residential Art Courses in magnificent and inspiring scenery – mountains, sea, rivers, lochs. Warm hospitality & good food. Non-painters welcome.

Tutors 2015: Ray Balkwill, Katharine Holmes, Bettina Schroeder, Jonathan Shearer, David Tress and Eleanor White. Please see our website for dates and further details.

[www.nwhighlandsart.co.uk](http://www.nwhighlandsart.co.uk), [gillian@nwhighlandsart.co.uk](mailto:gillian@nwhighlandsart.co.uk), Nicola: [nic.pol@live.co.uk](mailto:nic.pol@live.co.uk), 01520 733 227 / 459

**LEITH SCHOOL OF ART**

**SUMMER SCHOOL**  
13 JULY - 21 AUGUST 2015

PAINTING | JEWELLERY | DRAWING  
PRINTMAKING | 12-16 YEAR OLDS  
PORTFOLIO | MIXED MEDIA

[www.LeithSchoolofArt.co.uk](http://www.LeithSchoolofArt.co.uk)  
0131 554 5761 [enquiries@LeithSchoolofArt.co.uk](mailto:enquiries@LeithSchoolofArt.co.uk)

Charity no: SC029484

**FALL IN LOVE WITH...GARTMORE HOUSE**

Tutor led watercolour painting holidays in the Loch Lomond & Trossachs National Park, Scotland.

Ensuite accommodation in our 18th century country mansion, small friendly groups, suitable for all levels.

To request our brochure, call 01877 382 991 or email [mail@gartmorehouse.com](mailto:mail@gartmorehouse.com) Gartmore House

[www.gartmorehouse.com](http://www.gartmorehouse.com)

Gartmore House Gartmore Stirling FK8 3RS

**artWORK**

**Do you have a course in the arts to offer artists or craft workers? These columns are read by an interested and informed readership**

Telephone:  
**01436 672544**  
[artwork@famedram.co.uk](mailto:artwork@famedram.co.uk)  
[www.artwork.co.uk](http://www.artwork.co.uk)

resipole studios fine art gallery

fine art in stunning surroundings  
[www.resipolestudios.co.uk](http://www.resipolestudios.co.uk)

**Maisie & Mac**  
Gifts, Art & Contemporary Craft

Fabulous work from artists & designer-makers from all over the UK ...

10-5 Mon-Sat. [www.maisieandmac.com](http://www.maisieandmac.com)  
1 St Catherine St, Cupar, Fife. 01334 656523

**SOURCES FOR COURSES**

**NORTH LANDS CREATIVE GLASS**

**Master Classes**

15-23 July 2015: Judith Schaechter  
'Stained Glass: The Final Frontier'

18-23 July 2015: Maria Bang Espersen & Max Syron  
'Glass Unknown: Experimentation and Discoveries in the Hot Shop'

26 Aug-3 Sept 2015: Angela Thwaites  
'Towards purpose—kiln formed glass, cold working & other stuff'

26 Aug-3 Sept 2015: James Maskrey  
'Narrating Process'

**Annual Conference**  
'Extreme Glass: a focus on material & process'  
5 & 6 September 2015

**Skills Class**  
21-28 June 2015: Amanda Simmons  
'Blooming Vessels'

North Lands Creative Glass  
Quatre Bras, Lybster  
Caithness KW3 6BN  
+44(0)1593721229  
[www.northlandsglass.com](http://www.northlandsglass.com)  
[info@northlandsglass.com](mailto:info@northlandsglass.com)

CREATIVE LAND SCOTLAND  
ALBA | CHRUTHACHAIL

**“I’m listening to you” – Janet Archer**

*The head of Creative Scotland tells Mary Gladstone she’s all ears. We hear you.*

IN THE PLUSH offices of Waverley Gate, at the east end of Edinburgh’s Princes Street, the softly-spoken Janet Archer holds sway. Since July 2013, she is reputed to have steered Creative Scotland off the rocks (on to which her predecessor landed the country’s main arts funding body) and into calmer waters.

As your *ArtWork* reporter positions her old-fashioned recorder, Ms Archer admits indulgently that she still keeps at home videos and cassettes that she can’t bear to throw away.

Adept, if not sometimes evasive in her responses to this paper’s questions, Ms Archer is especially animated when asked what role the arts should play in Scotland (it’s a favoured subject these days and has engendered a public debate on Radio 4). When questioned if they should be regarded as a commodity, an excuse to fill the country’s coffers or a way to enlarge human experience, the unceremonious Archer has decided views.

“We have to think about them in terms of their intrinsic value and purpose and acknowledge that many artists and creative people wish to do something extraordinary or make something meaningful. It’s not necessarily about wanting to drive the economy. At the same time, there has to be enough money in the system for people to exist, to live their lives and pay their mortgages.”

Referring to small arts projects that have mushroomed into multi-million pound commercial enterprises, Creative Scotland’s chief explains how it’s their job as funder to embrace both ends of the spectrum.

“We should acknowledge that whether you’re an artist or a commercial creative company, your impetus is to make, drive and see something creatively.”

Polarisation, she admits, is undesirable. When it comes to arts funding they must understand the mix of creative people they support.

“In our plan we talk about the creative system and our wish to understand the choices that creative

people make at different stages of their life.”

It is crucial to understand how these people go about their lives. This is especially true when, with Andrew Dixon, the former director, artists rebelled against the organisation’s attitudes, ideology and language. Since Archer’s tenure, it has been noticed that Creative Scotland’s funding methods and language have been simplified.

Last year (before the referendum, no

November 2013 to develop the arts for Scottish children and young people), are indicative of an organization that thinks hard in terms of its engagement across Scotland.

“I’d like to formalize our relationships in different parts of the country. We could connect with a local area, establish a regular presence there in being present on the same day once a month so we may act as a conduit into Creative Scotland. Then people would

make a connection with us. In that way, we would feed into community partnerships and local strategic thinking and achieve a better joined-up approach in doing things.”

In the old days, the Scottish Arts Council focused on giving funds to artists who were seen as supplicants. The new arts funder concentrates not only on doling out money but on “partnership, both in terms of our relationship with the organizations and individuals we fund, but also the

relationship that those organizations hold with other public agencies involved in supporting the arts and culture. These are absolutely fundamental because it’s not possible to do anything entirely in isolation.”

Last month presented a big challenge for Creative Scotland. As a result of their decision last October not to offer the Scottish Youth Theatre regular three year funding, ex-First Minister Alex Salmond went over Archer and her colleagues’ heads and awarded the theatre company, along with the National Youth Orchestra of Scotland, the National Youth Choir of Scotland and YDance, a £ 1 million package.

If, as head of a non-governmental public body, Archer’s nose was put out of joint by Salmond’s unprecedented act, she is not letting on.

“Scottish Youth Theatre are working well. They are re-thinking the way they operate in terms of their business model and we’re confident that they’re getting to a stronger place through the growth working that we’re doing together. That’ll be a very good thing for the young of Scotland.”



# No Reasonable Offer Refused!

*(we'll even look at unreasonable ones)*

After more years than we care to think of, Famedram are moving premises. For sale are the machines, some historic, some antiquated, some useful(!) we have used to produce newspapers and books over the years. They include the following:

**Goss Suburban web offset newspaper press**

*(4 units, with quarter fold, 598mm cutoff)*

*Can print and fold a 32 page tabloid paper*

**Rotagazette single web A2 perfecting press**

*Prints both sides of an A2 sheet from a reel*

**Hobson 10 station collator/folder**

*Gathers and folds 10 printed sheets up to A2 size*

**Historic "classic" computer gear – including:**

**4 Tandy 102 laptops, Mac Pluses, Mac Duo Docks etc.**

*Plus dark room gear, print down frames, Letraset, etc.*

**Would suit anyone who enjoys a challenge  
– or had thought of starting a printing museum!**

**More from: [artwork@famedram.com](mailto:artwork@famedram.com)**

**Famedram Publishers Ltd PO Box 3**

**Ellon Aberdeenshire AB41 9EA**

The North\*s **Original** Free Arts Newspaper + [www.artwork.co.uk](http://www.artwork.co.uk)

# artWORK

...is freely available throughout Scotland and into the North of England in arts outlets, but because of growing demand copies are often snapped up soon after publication. To be sure of seeing each copy as it comes out take out a subscription.

£10.00 (6 issues)

£15.00 (12 issues)

NAME .....

ADDRESS .....

.....POSTCODE .....

PLEASE SEND ME REGULAR COPIES OF **artWORK** to this address...Send  
(with cheque/PO/postage stamps) to:Famedram Publishers Ltd., PO Box 3, Ellon AB41 9EA Scotland