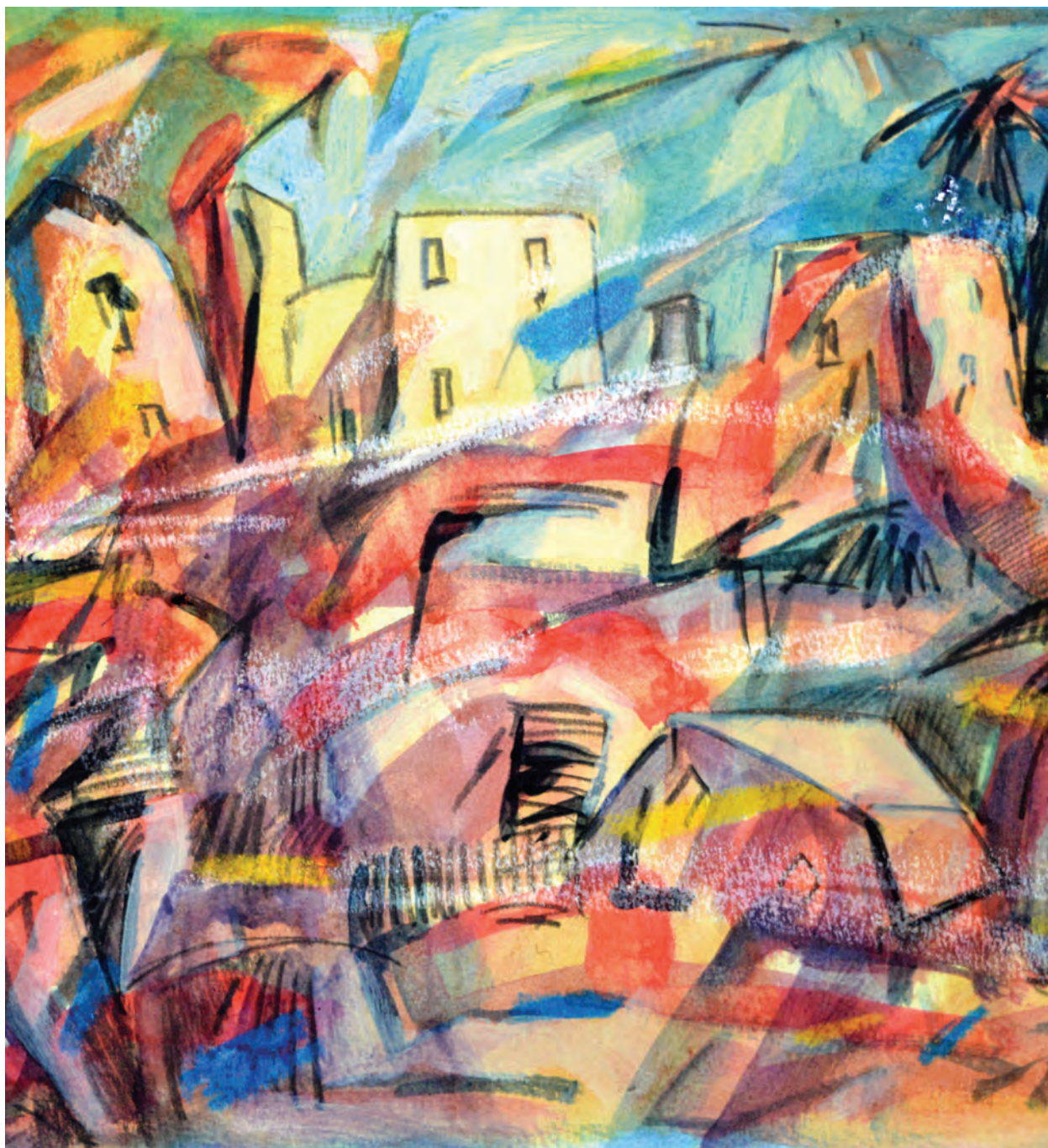


The North*s *Original* Free Arts Newspaper + www.artwork.co.uk

artWORK

Number 221 Pick up your own FREE copy and find out what's really happening in the arts May/June 2022



Baghdad 2003, a timely work by Ken Smyth, one of the driving forces behind an artist-led initiative that has created a small network of pop-up artists' shops in South West Scotland. (See p.7 inside)

INSIDE: A Pioneering Collector :: Sound and Silence :: Saturday Night Movie Terror

SHOP ONLINE
UK MAIL ORDER
& LOCAL DELIVERIES
www.EdinburghArtShop.co.uk

iART SUPPLIES



WE'VE MOVED!
 NEW LOCATION:
 UNIT F
 HAWKHILL COURT
 DUNDEE DD1-4JG
 0330 223 0922
iARTSUPPLIES.co.uk

The North's Original Free Arts Newspaper + www.artwork.co.uk

artWORK

£12.00 (6 issues) £18.00 (12 issues)

NAME.....
 ADDRESS.....
 POSTCODE.....

PLEASE SEND ME REGULAR COPIES OF
artWORK
 to this address:
 Send (with cheque/PO/postage stamps)
 to:Famedram Publishers Ltd.,
 PO Box 3, Ellon AB41 9EA, Scotland

Tessa Williams
 THE SCENTS WE MISSED FROM LOCKDOWN

New Eau de Parfum
 The Scents we Missed from Lockdown New Range from Tessa Williams X4160 Tuesdays
 20% off with code ARTWORK20
WWW.TESSAWILLIAMS.CO.UK

**Museums & Galleries
 Perth & Kinross**

**Perth Museum & Art Gallery,
 The Fergusson Gallery and
 Alyth Museum are now open.**

Visit our website for up to date opening hours
www.culturepk.org.uk

PAINTBOX School of Art

Professional Development Course 2022/23

Covering all that's needed to set up and develop as a working Artist. For established and emerging Artists alike - take your practice to a new level
 Course includes...

- Setting up a rigorous practice
- Developing your work
- Websites and Social Media
- Documenting your work and making catalogues
- Promoting and selling
- Artist Statements
- Contracts
- Working with Galleries
- Presentation
- Hanging Exhibitions
- Photographing work professionally

For bookings & queries, contact:
enquiries@paintboxartclasses.com
 Tel: 07732 038 063/ 07852 951 592
 Cockenzie House & Gardens, Cockenzie, East Lothian EH32 0HY

THE GLASGOW SCHOOL OF ART

DEGREE SHOW 2022

01.06.22

IN PERSON AND ONLINE

Capsule typeface,
 Billy Paterson, Y3
 Communication Design 2022

The

marquis.co.uk
 June 4 & 5
 Springfield Creative Arts Pottery Classes for 2022
THE CANVAS ART GALLERY, 81 East High Street, Forfar, DD8 2EQ, 01307 465 715
 Originals, prints, quality picture framing. Unusual giftware and jewellery.

MONTROSE MUSEUM & ART GALLERY, Panmure Place, Montrose, DD10 8HF, 01674 673232
 Until June 25
 Gableopolis: The James Gray Low Collection explores the history of Montrose

HOSPITALFIELD, Hospitalfield House, Arbroath, DD11 2NH, 01241 656 124
ARBROATH ART GALLERY, Arbroath Library, Hill Terrace, Arbroath, DD11 1AH, 01241 464545

Argyll
COWAL OPEN STUDIOS, PA23 8QU, www.cowalopenstudios.co.uk
 Until August 31
 Cowal Summer Art Trail
 September 23 - 26
 Cowal Open Studios 2022. Over 50 artists and makers

RESIPOLE STUDIOS, Acharacle, PH16 4HX, 01967 431 506, www.resipolestudios.co.uk
 New artspace with studios, gallery and framing service
 Until October 31
 The Spring Show
 Fiona MacRae. Just In. A new body of work

TIGHNABRUACH GALLERY, Seaside House, Tighnabruach, PA21 2DR, 01700 811 681, www.tiggallery.com, robbie@tiggallery.com
 Original art, sculpture, glass, jewellery, poetry
 May 21 - June 19
 Rebecca Thorpe. Retreat
 Natalie Sedgewick, Susan M Turmen. The Nature of Jewellery

THE HARBOUR GALLERY, Knap, Harbour Street, Tarbert, PA29 6UA, 01880 821170, www.theharbourgallery.com, info@theharbourgallery.com
COMFREY COTTAGE STUDIO, 1 Tayness, Kilmartin, PA31 8QF, anneamckivison@gmail.com
 Small gallery where there are an assortment of paintings on view, painted in various media

IONA HOSTEL, Lagadoran, Isle of Iona, PA76 6SW, 01681 700 642, www.ionahostel.co.uk, info@ionahostel.co.uk
 The opportunity to focus on your artistic development in a quiet and elemental Hebridean landscape

THE ARCADE, 7 Union Street, Lochgilphead, PA31 8AS, 01546 606 894
STUDIO BARN ARGYLL, Leac Na Ban, Tayvallich, Lochgilphead, PA31 8PF, 01546 870 510
 Seasonal exhibition of original art

FINE STUDIOS - THE HIDDEN GALLERY, Newton, Strachur, (off the A886), PA27 8DB, 01369 860 379
 Gallery of two Scottish artists Don McNeil & Jean Bell
JUNO DESIGN GALLERY, 159 Argyll Street, Dunoon, PA23 7DD, 01369 707 767

THE STABLE E GALLERY, Church Square, Inveraray, PA32 8TY, 01499 302 800
 Paintings, reproductions, greetings cards, exclusive post cards

IONA HERITAGE CENTRE, Isle of Iona, PA76 6SA, 01681 700 576
IONA GALLERY AND POTTERY, Isle of Iona, PA76 6SW, 01681 700 439
 ORSAV, 2 Stevenson Street, Oban, PA34 5NB, 01631 569 988
 Jewellery, ceramics, glass metal, textiles, wood lights, cards
INVERBEG GALLERIES, Inverbeg, Argyll & Bute, Loch Lomond, G83 8PD, 01436 800 277

CAOL RUADEIL SCULPTURE PARK, Caol Ruaidh, Colintonrae, PA22 3AR, 07771 996656
 Scottish sculpture park
THE JETTY GALLERY, 100 George Street, Oban, PA34 5NR, 01631 570102
 Continuously changing contemporary artwork -
BENMORE BOTANIC GARDEN, Dunoon, PA23 8QU, 01369 706261
 May 6 - 8
 Rhododendron Portraits - A Residential Botanical Art Workshop

Ayr
MACLAURIN ART GALLERY, Roselle Estate, Monument Road, KA7 4NQ, 01292 443 708, www.themaclaurin.org.uk/
 Until May 15
 James Fullarton. A Modern Scottish Colourist
Berwick-upon-Tweed
STANLEY SPENCER GALLERY, High Street, Cookham, SL6 9SJ, 01628 471 885
 Until October 30
 Stanley Spencer. Delight in Nature

ROZELLE HOUSE GALLERIES, Rozelle Park, Monument Road, KA7 4NQ, 01292 443 708, www.south-ayrshire.gov.uk/art-etc/24234/Rozelle-House-museum-and-galleries
 Ongoing
 Alexander Goudie. Tam O'Shanter: A Tale Told in Pictures
OPEN STUDIOS AYRSHIRE, Venues throughout Ayrshire, www.openstudiosayrshire.com
 Over 70 Ayrshire artists will open their studios to the public
 September 2 - 5
 Open Studios Ayrshire 2022
ARRAN OPEN STUDIOS, KA27, www.arranopenstudios.com
 August 12 - 15
 Open Studios Weekend 2022.
 Also a ten year anniversary staging of the event

HARBOUR ARTS CENTRE, 114-116 Harbour Street, Irvine, KA12 8EE, 01294 274 059, theaac.co.uk/harbourarts@north-ayrshire.gov.uk
 May 11 - June 25
 Gillian Park. Driven to Abstraction

MCKECHINE INSTITUTE, Dalrymple Street, Girvan, KA26 9AE, 01465 713 643, www.south-ayrshire.gov.uk/galleries
ART'N'JOY GALLERY AND PICTURE FRAMERS, 52 Hamilton Street, Saltcoats, North Ayrshire, KA51 5DS, 01294 472 222, www.artnjoy.co.uk
THE FRAMEWORK GALLERY, 83 Portland Street, Troon, KA10 6QL, 01292 316 144
 Continuous mix of original paintings and printwork by a variety of artists

GLENBUCK ARTS, Glenbuck Cottage, Glenbuck, East Ayrshire, KA18 3SB, 01290 661 784
 Regular display of sculptures, paintings and hand woven wall pieces. Sculpture Garden by the loch
CRAFT TOWN SCOTLAND, The Barony Centre, West Kilbride, KA23 9AW, 01294 829179
 May 7 - June 11
 Stories. Brought to the Barony Centre by the Scottish Pottery Association and will showcase work from 48 national Potters - inspired by the theme of Scottish Stories

THE WELLINGTON GALLERY, 13 Wellington Street, Kilmarnock, KA13 1DW, 01563 523 176
 Original paintings, prints and other artworks mainly from Scottish artists
ARTI FARTI EXHIBITION GALLERY, 48 Hamilton Street, Saltcoats, KA21 5DS, 01294 287207, www.arti-farti.co.uk, arti@arti-farti.co.uk
 Originals & Limited Editions

BUFF HOUSE COUNTRY GALLERY, Buff House, AB45 3SX, 01261 818181, www.nationalgalleries.org/visit/buff-house
 May 20 - July 17
 The Ghost Driher and Other Tales
 May 13 - March 19 2023
 Richard Dodd. Masterpiece Loan 2022. Sir Alexander Morrison, 1779-1866. Portraits

MEADOWLANDS GALLERY, 83 North Castle Street, AB45 1JJ, 01261 818 535, meadowlands-buff@aol.com
 Douglas Heggie - New work
Banffshire
TOMINTOUL MUSEUM & VISITOR CENTRE, The Square, Tomintoul, AB37 9ET, 01309 673 701
TOMINTOUL GALLERY, 82 Main Street, Tomintoul, Ballindalloch, AB37 9HA, 01807 580 458
 Batik fine art by Jane Lamagan, original art, prints, cards and interesting gifts

Beaulieu
KILMORACK GALLERY, The Old Kilmorack Church, IV4 7AL, 01463 783 230, www.kilmorack-gallery.co.uk, art@kilmorack-gallery.co.uk
Berkshire
STANLEY SPENCER GALLERY, High Street, Cookham, SL6 9SJ, 01628 471 885
 Until October 30
 Stanley Spencer. Delight in Nature

Berwick-upon-Tweed
BERWICK GYMNASIUM ART GALLERY, Berwick Barracks, The Parade, TD15 1DG, 01289

THE TOD ENDOWMENT FUND
 Charity No: SCO10046
 The Scottish Artists' Benevolent Association is empowered by the above to provide holidays in Scotland for artists (resident in Scotland for at least two years) who are experiencing difficulties.
All information received is Private and Confidential
 Application forms may be obtained from:
 The Secretary
 Scottish Artists' Benevolent Association
 C/o Robb Ferguson, Regent Court
 70 West Regent Street
 Glasgow G2 2QZ
 Email: lesley@robbferguson.co.uk
 Charity No: SCO11823

BANG on – the interplay between sound and silence

I'M BACK at the Old School in Alnmouth. There's an old upright piano in the gallery, unusual because you can not only play it, but also read it. It's a legacy of Jonny Hannah's 2021 exhibition 'Northumberland Folk'. He's inscribed and decorated it with references to tales gleaned from people and places across a landscape that sings; you just have to stop and listen.

An inspiration to many musicians, composers and sound artists included. Katherine Tickell is perhaps one of the best known, learning tunes from old shepherds, out on the foothills of Cheviot, surrounded by call of curlew and lapwing.

Northumberland born, Geoff Sample specialises in not just recording birdsong but linking it to place and time. He's currently working on a project for Radio 3's 'The Essay', about iconic European soundscapes.

For composer John Casken, who also organises Wooler Arts Summer Concerts, this landscape, its changing colours, huge skies, and poetry have formed a thread throughout his music.

Also living under Cheviot, looking east to sea and Farnes, artist James Hugonin's work resonates in visual form with the compositions of Steve Reich, Morton Feldman and Philip Glass. His paintings are defined by rhythm, mathematical form, and a subtly repetitive, meticulously organised grid of coloured squares and oblongs. No surprise, then, that he has worked with composers Gavin Bryars and Howard Skempton, or that his 2015 show at Ingleby Gallery, Edinburgh, was entitled 'Binary Rhythm', exploring potential relationships between prime numbers.

Hugonin's fascination with space, place and spirit gets me thinking. According to David George Haskell, writing in his new book *Sounds Wild and Broken*, for two billion years it was only bacteria that sensed sound, until a sea creature evolved a tiny wiggly hair called a cilium enabling it to hear changes in water flow, to help find food.

Now, we're overwhelmed by sound, whether we like it or not. And not just us, for we know that noise affects all creatures, on land or in the sea, and not always in a good way.

So when are sounds music, and not noise? Why is some music just noise, to some; and some noise, music, to others? Musical instruments enable pitch, intensity and wavelengths to be managed and coordinated, but 'noise music'



Hannah's piano. Picture Nick Jones

challenges the difference between musical and non-musical sound.

Sound art, aka sound sculpture, expands the concept of an art installation to include sound and, therefore, both time, space, and by implication, nothingness, the void in between.

Mike Worboys, composer, mathematician and practitioner of zen, who lives in Berwick-upon-Tweed, puts it like this: "Music is an interplay between sound and silence; zero is a foundation of our number systems; and the void and emptiness, as well as keeping silence, are fundamental to many religions."

Alan Watts, self-styled philosophical entertainer, wrote: "When

we listen to music we are not listening to the past, we are not listening to the future, we are listening to an expanded present. The past always flows backwards from the present.

"Watch the flow of music. The melody is changed by the notes that come later. The present is always changing the past. No one imagines that a symphony is supposed to improve as it goes along, or that the whole object of playing is to reach the piano. The point of music is discovered in every moment of playing and listening to it."

I'm listening. Mr Blackbird is sitting on top of a tree, singing his heart out. He's been going since first light. Later, he'll welcome in twilight.

The east wind brings sounds of breakers on Goswick beach, six miles away.
 BANG! The first of a sequence of four, from a bird scarer, keeping pigeons off the oilseed rape that surrounds us. A couple of miles away, the steady background hum of cars, lorries, tractors and the occasional siren herald another working day.

BANG! Ten miles away, over Cheviot, a chopper, heading for Edinburgh, drums the air relentlessly. Right above a transatlantic jet heads for Amsterdam, rudely breaking into, but not stopping, the skylark's incessant song.

Inside, on Radio 3, Petroc Trelawny tells us today's temperatures, in Totnes, Tordmorden and Thurso. Out at sea, a bright red oil tanker beats the waves, heading for Hound Point depot in the Firth of Forth.

Time for Gymnopédie practice! BANG! Satisfying because, playing slowly, some of French composer Erik Satie's compositions can sound passably competent, even by moi!

He only made one phone call, and listened to one radio programme, ever. We speak of white noise, a kind of shushing sound made up of all the frequencies audible to the human ear, but white

meant something very different for Satie. At Les Maisons Satie, in Honfleur, there is a room, including floorboards, piano and stool – all white. BANG!

Satie obsessed with this colourless colour, wearing white suits, even eating white food. Apparently, in later life, living in one very small room in Arcueil, Paris, he had two white grand pianos, sitting on top of each other, and, perhaps, a very tall white piano stool.

And so to Lindisfarne Castle, where gusting winds whistle down the chimneys, and gulls screech overhead. A frequent guest a century ago was cellist Guilhaermina Suggia. How wonderful to hear Bach's Unaccompanied Cello Suites in the Music Room!

Now sound artist Paul Rooney and cellist Gyöza Valtysdottir have collaborated on 'Song (After Nature)', a contemporary, immersive, soundscape installation inspired by the mournful cries of Holy Island's grey seals.

There's a sinister echo to Paul's work. He hears these cries, like the deadly sirens on Homer's *Odyssey*, as a warning: "Beware, climate change cometh, and quicker than we think!"

NICK JONES
 www.woolerarts.org.uk www.nationaltrust.org.uk/lindisfarne-castle/features/paul-rooney-at-lindisfarne-castle---song-after-nature

FINANCIAL HELP FOR SCOTTISH ARTISTS
The Scottish Artists' Benevolent Association exists to afford relief to distressed artists, their widows, orphans or dependants.
 Grants are payable to those who may be experiencing difficulties due to old age or ill health. Applications are considered in April and November. Assistance may also be given for emergency situations and these are dealt with on an ongoing basis.
Application forms are available by email from the Secretary Lesley Nicholl: lesley@robbferguson.co.uk
All information received will remain strictly confidential
 The Scottish Artists' Benevolent Association
 % Robb Ferguson, Regent Court
 70 West Regent Street
 Glasgow G2 2QZ
 0141 248 7411



Grouse. Gordon K Mitchell RSA RSW RSGI

resipole studios
 FINE ART GALLERY
 Beautiful selection of Fine Art, Crafts & Photography, home baking, coffee & lunch.
 A Warm welcome awaits you.
 Closed Mondays & Tuesdays
Original Acrylic painting by Eleanor Honeyborne-Heaney
 www.resipolestudios.co.uk
 loch sunart | acharacle | argyll | ph36 4hx | 01967 431506

Pop-up goes professional

Producing artists get together in South West Scotland

FORTY committed artists have come together recently to sell their work in shops in Kirkcudbright, Castle Douglas and Gatehouse of Fleet. They call themselves PA Popup, as that's how they began, when in 2015 textile designer, Morag McPherson took over an unused shop in Kirkcudbright. It became a fixture and two other shops run by artists sprang up in Gatehouse and Castle Douglas.

PA stands for 'professional artists'. PA Popup members see themselves as professional. They have a commitment to their art or craft and although they might not be entirely financially self-sufficient, the bulk of their working life is spent practising their art.

In each shop is a display of artwork ranging from ceramics, glass, illustration, jewellery, metals, paper craft, photography, textiles, wood, painting, prints and cards. The aim is to create a coherent display in each venue.

As a collective, PA Popup must cover its costs. Each artist pays a monthly fee for rent and utilities. No commission is charged and members set their ticket price. Artists' co-ops can be positive, resulting in thriving partnerships, interesting collaboration and shared responsibility. In this respect, PA Popup asks members to take charge of the shop for two days each month. And if a member wants to show their work in more than one venue, they can do so, if the balance of work on display is reasonable.

Salas fluctuate according to the season; summer of course, brings in the shekels, but there can be a flurry of buying in the run-up to Christmas. In Gatehouse, the shop, open from late March to the end of October, is in a large gallery space on the top floor of the Mill on the Fleet, a restored cotton mill on the banks of the Fleet.

Artist, graphic designer and film-maker, Ken Smyth, who is chairman of the Mill on the Fleet board, is one of PA Popup's most innovative artists.

He sees no conflict between commercial commissions and his own art. "One bounces off the other," he says. His style varies from traditional pictorial, bright colour, Expressionist and sometimes it drifts into abstraction.

For Ken, partnership is important, whether it's taking part in the PA Popup collective or participation in multi-disciplinary art.

A recent work-in-partnership involved collaboration with composer, Kat Gillham and Galloway/London-based Chrys Salt. Kat wanted to put the latter's poetry to music as she was moved by her poetry on the Iraq war. Chrys Salt is a pacifist, who was affected by the fact that her son, in the Territorial Army, went to fight in the conflict.



Popping up in Gatehouse of Fleet

Working with the words and music, Ken created images and brought all three mediums together, to form 'Seascape: a poem-film'. With the voice of Freya Wynn-Jones (soprano) and Martin Neill on piano, this 5-minute elegiac work is exquisitely haunting. To mark the 20th anniversary of the Iraq War next year, Ken plans a performance piece and/or film of Chrys Salt's



Ken Smyth Pam Kelly

poetry accompanied by Richard Ingham's music and Ken's visual images.

A more ambitious poem-film is 'Shookum Jim & The American Dream', based on Chrys Salt's 28 poem sequence on the US Klondyke Gold Rush. A different approach was needed for this work and it took a long time to complete. After visiting the Yukon, Chrys

composed poems that told stories. To illustrate them, Ken employed imagery that resembled travel posters, cartoons and abstract illustration.

Ingham composed the music for each poem and after recording the pieces, Ken brought together the words, music and illustration to make a film. His concern was its length. At 40 minutes, it was much longer than the previous poem-film. Could audience-interest be sustained for that length of time?

Shookum Jim & The American Dream's first outing as a digital offering will be this month at the Dumfries & Galloway Arts Festival (May 20-29).

Enjoying the challenge of working in multi-media, Ken Smyth found Chrys Salt's poetry accessible and her themes compelling. He is drawn to sombre subjects like the Iraq War and the environmental chaos caused by the Gold Rush. "Artists get more mileage out of tragedy," he says. "Maybe because it deals with a greater scope of emotions in a wider range." He takes Rubens's majestic scenes and portrayal of cataclysmic events as an example, not to mention Goya's portrayal of war.

You could say that PA Popup is the 21st century's equivalent to the artists' colony, like the St. Ives and Kirkcudbright communities at the turn of the 20th century. The PA Popup collective challenges the power of the gallery owner who charges commission on artworks sold, and avoids the alienation of showing and selling online. Most importantly, it enables artists to work together, learn from each other and innovate.

As Ken Smyth points out, there's often an element of risk in any creative endeavour and the nerve-wracking moment when the artist must 'pull the rabbit out of the hat', and make things work. Hopefully, the PA Popup collective can provide support for those who are committed to this kind of high-wire act.

MARY GLADSTONE
KELSO POTTERY
 100 metres behind the Kelso Abbey in The Knowes Car Park.
 Porridge and Soup Bowls, Piggy Banks and Goblets, Ovenproof Gratin Dishes, also Pit Fired Pieces.
 Open Tues - Sat 10 to 1 - 2 to 5
 Telephone: (01573) 224027

Guide

304 535
 Until June 4
 Joanne Coates. Daughters of the Soil. Twelve month research work
DOCKSIDE GALLERY, 84 Main Street, Tweedmouth, TD15 2AA, 01289 302437, www.docksidegallery.co.uk
 An ever-changing exhibition of original paintings, prints, cards and gifts including ceramics and jewellery.

BERWICK MUSEUM & ART GALLERY, The Clock Block, Berwick Barracks, The Parade, TD15 1DG, 01289 309 538
 Ongoing
 Berwick Burrell Collection. A collection of fine art and delightful Oriental porcelain

THE GRANARY GALLERY, 2nd Floor, Berwick YHA, Devar's Lane, Berwick upon Tweed, TD15 1HJ, 01289 303 232
 May 21 - October 2022
 The 20th Century British Art of Pioneering Collector Helen Sutherland

NUMBER FOUR GALLERY, Northfield Farm, St Abbs, Berwickshire, TD14 5QF, 01890 771 111
 Contemporary work from artists and designer/makers from both sides of the Border

PAXTON HOUSE, Paxton House, Paxton, TD15 1SZ
MARTA UTSLER, 01289 763748, www.martautslers.com
BERWICK ART GROUP, 23 Bell Tower Park, TD15 1ND
FLEETHOUSE GALLERY, 47 Bridge Street, TD15 1ES, 07483 873325
 New gallery in Bridge Street

Birmingham
IKON GALLERY, 1 Ozells Square, Brindleyplace, B1 2HS, 0121 248 0708
BIRMINGHAM MUSEUM & ART GALLERY, Chamberlain Square, B3 3DH, 0121 348 8000
 Until 14 September
 Lubana Himid. Found Cities. Lost Objects: Women in the City. Conversations between audiences and artists at its heart, each exchanging observations, memories and imaginations to give us all a greater sense of ownership and belonging

THE GALLERY AT LAURISTON, Woodbank House, Lauriston, DG7 1PF, 01556 504318, www.cliencestudio.co.uk
 Gallery & studio of Angela Lawrence
DESIGNS GALLERY & CAFE, 179 King Street, DG7 1DZ, 01556 504 552, www.designsgallery.co.uk, admin@designsgallery.co.uk
 A selection of books, prints and cards

THE MCCULL-DUNCAN GALLERY, 231 King Street, DG7 1DT, 01556 502 468
ARTS OF ALBA, 39/40 Threave Terrace, DG7 1HG, 01556 504 020
 Featuring the work of Freida Dyson, Sam Mullen and Sheila Mullen

JANINAS ART, Meadowview, Springholm, DG7 3JF, 01556 650329
 Still lifes, landscapes, portraits, figures, abstracts, experimental work in mixed media

DALBEATIE VISITOR INFORMATION AND CRAFT CENTRE, 24 High Street, Dalbeattie, DG5 4AA, 01556 612 752
NORTH GLEN GALLERY, North Glen, Palnackie, Castle Douglas, DG7 1HF, 01556 680 280
 Exhibitions open studio, glass-blown, oil lamps, chandeliers, wine goblets. Call for details and belonging

Bowders
THE SCOTT GALLERY, Hawick Museum, Wilton Lodge Park, Hawick, TD9 7JL, 01750 20096
THE CHRISTOPHER BOYD GALLERY, Old Gala House, Scott Crescent, Galashiels, TD1 3JS
FLAT CAT GALLERY, 2 Market Place, Lauder, TD2 6SR, 01578 722 808, www.flatcatgallery.co.uk, flatcatgallery@btconnect.com
THE ROADSTEAD GALLERY, St Elizabeths, Eyemouth, TD14 5HP, 018907 52067
REAL WOOD STUDIOS, Monteviot Nurseries, Nr Ancrum, Jedburgh, TD8 6TU, 01835 830 767
 Contemporary Scottish furniture
 CaFé and walks

BUY DESIGN GALLERY 1
 Harestanes Craft Workshops, Harestanes by Ancrum, Jedburgh, TD8 6TU, 01835 830 718
 Showspace for quality crafts made in wood, metal, glass, ceramic and textile

TWEEDSIDE GALLERY, Tweedside Road, Newton St Boswell, Roxburghshire, TD6 0PG, 01835 823473
 Picture Framing Plus beautiful crafts such as aromatics, ceramics, glass and much more

EDGE TEXTILE ARTISTS
 SCOTLAND, Towerhouse, www.edge-textileartists-scotland.com
 Promoting excellence in textiles by artists based in Scotland

Bristol
ARNOLFINI, Bush House, 16 Narrow Quay, BS1 4QA, 0117 917 2300
BRISTOL DRAWING SCHOOL, Unit 5.18, Paintworks, Arnos Vale, BS4 3EH
 Until June 19
 Me, Myself & I: Artists' Self-Portraits. Provides historical context to today's selfie culture, through an exploration of self-portraiture over the last three hundred years

North Lands Creative Glass, Quatre Bras, Lybster, KW3 6BN, 01593 721 229, www.northlandscreative.co.uk, info@northlandscglass.com
 Closed to the public in response to the Coronavirus Pandemic

LYTH ARTS CENTRE, Lyth, Wick, KW1 4UD, 01955 641 270, www.lytharts.org.uk
 Due to Covid-19 all events and activities are postponed till further notice. Check website for further details

Caithness
NORTH LANDS CREATIVE GLASS, Quatre Bras, Lybster, KW3 6BN, 01593 721 229, www.northlandscreative.co.uk, info@northlandscglass.com
 Closed to the public in response to the Coronavirus Pandemic

ABBOT HALL ART GALLERY, Kendal, LA9 5AL, 01539 722464
 Exhibition talks, holiday workshops, gallery book shop, coffee shop

KENDAL MUSEUM, Station Road, Kendal, LA9 6BT, 01539 815597
BLACKWELL, Bonness-on-Windermere, LA23 3JT, 01539

Cumbria
ART IN THE PEN, Borderway Junction Mart, Roschill Industrial Estate, Montgomery Way, Carlisle, CA1 2RS, www.artintheopen.org.uk
 Contemporary art fair
 August 13 & 14
 Skipton Auction Mart. Over 200 exhibitors
ABBOT HALL ART GALLERY, Kendal, LA9 5AL, 01539 722464
 Exhibition talks, holiday workshops, gallery book shop, coffee shop

Blackwell
BLACKWELL, Bonness-on-Windermere, LA23 3JT, 01539

Visit: www.artwork.co.uk

The

446 139
BREWERY ARTS CENTRE, Highgate, Kendal, LA9 4HE, 01539 725 133 Theatre, music, dance, comedy, exhibitions, cinema, literature, workshops, restaurant, bars & cafe
Until June 25 Seeing In The Dark. Digital installation
EDEN ARTS, 1 Sandgate, Penrith, CA11 7TP, 01768 899 444
PENNINE POTTERY, Gosnell Head House, Alston, CA9 3NG, 01434 382 157 Pottery & kiln work of ceramicist Peter Lascelles - please telephone first
RED BARN GALLERY, Melkethorpe, Penrith, CA10 2DR, 01931 212 767
MUSEUM OF LAKELAND LIFE & INDUSTRY, Abbot Hall, Kirkland, Kendal, LA9 5AL, 01539 722 464
WILLOWPOOL DESIGNS, 9 Weston Houses, Endmoor, Kendal, LA8 0HA, 01539 567 056 Willow work by Simone Sigean & Steve Fuller
DOVE COTTAGE & THE WORDSWORTH MUSEUM, Dove Cottage, Grasmere, LA22 9SH, 01534 3554
FARFIELD MILL, Garsdale Road, Seabergh, LA10 5LW, 01539 621 958
Until May 15 Manges Ayres. Breath. Works
Until May 31 The Loving Earth. Community textile project which seeks to help people engage with the climate and environmental crisis
TULLIE HOUSE MUSEUM AND ART GALLERY, Castle Street, Carlisle, CA3 8TP, 01228 618718
Until December 31 2022 Black Memories Matter
Until December 31 2023 Gabriel Dante Rossetti, Elizabeth Siddall, Edward Burne-Jones, Phoebe Anna Traquair and Arthur Hughes. The Pre-Raphaelites
THE GALLERY AT RHEGED, Rheged Centre, Redhills, Penrith, CA11 0DQ, 01768 899 000
UPFRONT GALLERY AND COFFEE SHOP, Nr Hutton-in-the-Forest, Unthank, Penrith, CA11 9TG, 01768 484 538
Until May 15 Frances Winder. New Horizons. A Post Lockdown Collection of Paintings
BRANTWOOD, The Brantwood Trust, Coniston, LA21 8AD, 01539 441 396
Until June 12 Rachel Gibson. A Little Wilderness. Paintings and drawings from the National World
Until December 31 John Ruskin in the Age of Science. Showcases the Ruskin Whitehouse Collection in London and the Lake District

Devon
INSPIRED PAINTING HOLIDAYS, Weston House, 6 Lake Street, Bampton, EX16 9NF, 01398 332094, www.inspired-paintingholidays.co.uk
 Landscapes, gardens, coast painting courses with Catherine Stott
Until September 30 Residential Painting Courses
PLYMOUTH COLLEGE OF ART, Tavistock Place, Plymouth, PL4 8AT, 01752 203 434

Dumfriesshire
GRACEFIELD ARTS CENTRE, 28 Edinburgh Road, DG1 1JQ, 01387 262 084, www.dgculture.co.uk/venue/gracefield-arts-centre, arts@dmagal.gov.uk
May 12 - 21 Dumfries & Galloway College Art and Design
May 14 - June 25 Modern Makers. Young artists from the past 6 years of the Upland project
May 28 - July 2 Spring Fling 20. A celebration of Scotland's premier Open Studios event
SPRING FLING OPEN STUDIOS, Gracefield Arts Centre, 28 Edinburgh Rd, DG1 1JQ, June 2 - 5
 The Studios 2022. Over 96 studios across the region will open their doors to visitors
ROBERT BURNS CENTRE, Mill Road, Dumfries, DG2 7BE, 01387 264808
 Check website for more details
DUMFRIES MUSEUM AND CAMERA OBSCURA, The Observatory, Rotchell Rd, Dumfries, DG2 7SW, 01387 253 374
Until September 1 Collecting and Connecting.

Dundee
DUNCAN OF JORDANSTONE COLLEGE OF ART & DESIGN GALLERIES, University of

Dundee, 13 Perth Road, DDI 4HT, 01382 385 330
Until December 31 2023
 The Ignorant Art School: Five Sit-ins towards Creative Emancipation
LAMB GALLERY, University of Dundee, Tower Building, Nethergate, DDI 4HN, 01382 385330
Until July 22
 World View. Travelling the Globe through Art and Design
HANNAH MACLURE CENTRE, University of Aberdeen, Top Floor, Abertay Student Centre, 1 - 3 Bell Street, DDI 1HP, 01382 308 777
GALLERY Q, 160 Nethergate, DDI 4DU, 01382 220 600, www.galleryq.co.uk, art@galleryq.co.uk
Until May 28
 Catriona Campbell, Gwen Adair and Andrew Adair. Relative Space
June 4 - July 2
 Drawn Threads. Scottish artists using textiles and embroidery, plus a small mixed show of paintings by gallery artists
THE MCMANUS: DUNDEE'S ART GALLERY & MUSEUM, Albert Square, Meadowside, DDI 1DA, 01382 307 200
May 19 - August 14
 Troy: Beauty and Heroism. Features an Etruscan urn
DUNDEE CONTEMPORARY ARTS (DCA), 152 Nethergate, DDI 4DY, 01382 909 900
COOPER GALLERY (EXHIBITIONS), Duncan of Jordanstone College of Art & Design (DJCAD), University of Dundee, 13 Perth Road, DDI 4HT, 01382 385 330, www.dundee.ac.uk/cooper-gallery/exhibitions/
Until July 7 2023 (Off-site event)
 What I am Reading Now...
Until December 31 2023
 Ruth Ewan. The Ignorant Art School
THE KRYSZYNA GALLERY, 15A Nelson Street, DDI 2FN, 01382 322 522, kryszyrna@gmail.com
 Drawings, Paintings and Prints
BROUGHTY CASTLE MUSEUM, Castle Approach, Broughty Ferry, DD5 2TF, 01382 436916
 Housys displays on the life and times of Broughty Ferry, its people, the environment and the wildlife that live close by
MCMANUS COLLECTIONS
 Unit, Barrack Street, Bayside, DDI 1PG, 01382 307280
IARTSUPPLIES, Unit F, Hawkhill Court, DDI 4UG, 0330 223 0922, www.iartsupplies.co.uk
 Online Art Shop and Art Supplies
All year round
 Online Art Supplies. High quality student ranges and artist ranges of Oil, Acrylic, Gouache, Watercolor, Watermixable Oil Paints, Lino and other printmaking equipment
LIFESPACE SCIENCE ART RESEARCH GALLERY, College of Life Sciences, University of Dundee, DDI 5EH, 01382 381023
MILLS OBSERVATORY, Glamis Road, Balgay Park, DD2 2UB, 01382 435 967
 Britain's first purpose-built public observatory

East Lothian
GREENS & BLUES, 59 High Street, North Berwick, EH39 4HG, 01620 890 666, www.greensandblues.co.uk, info@greensandblues.co.uk
 Spring Show - Celebrating 21 years of exhibiting
POLDRATHE ARTS AND CRAFTS CENTRE, The Elizabeth Hamilton Buildings, Poldrath, Haddington, EH41 4DA, www.thepace.org.uk, info@thepace.org.uk
FIDRA FINE ART, 7-8 Stanley Road, Gullane, EH31 2AD, 01620 895057, www.fidrafineart.co.uk, info@fidrafineart.co.uk
 200 years of Traditional and Contemporary Scottish Art
May 14 - June 26
 Drawing. Featuring work by Dominique Cameron, Nicola Carberry, Sandra Collins, Alan Connell, Paul Reid, Angela Repping, Joseph Urie, Graeme Wilcox and around 20 drawings dating from 1960 to 1981 by Neil Dallas Brown (1938-2003)
SEASHORE GALLERY, Marshall Street, Cockenzie, EH32 0HT, 0793 592 8288
 Paintings, jewellery, wood, ceramics, glass, prints, cards
WESTGATE GALLERY, 39-41 Westgate, North Berwick, EH39 4AC, 01620 894 976
 Paintings, limited edition prints, sculptures, ceramics & glass. Licensed Gallery caFA
BRAD IMAGE, 60 Rhodes Park, North Berwick, EH39 5NA, 01620 890 780
 Large Panoramic Art Photographs. Printed on Canvas. View on-line gallery or visitors by appointment

Dumfries
ROBERT BURNS CENTRE, Mill Road, Dumfries, DG2 7BE, 01387 264808
 Check website for more details
DUMFRIES MUSEUM AND CAMERA OBSCURA, The Observatory, Rotchell Rd, Dumfries, DG2 7SW, 01387 253 374
Until September 1
 Collecting and Connecting.

Dundee
DUNCAN OF JORDANSTONE COLLEGE OF ART & DESIGN GALLERIES, University of

For the Guide online

Pioneering 20th century collector remembered

Nick Jones is drawn to a remarkable exhibition* marking the inspired choices of the 'strong, puritan, ascetic, spiritual' Helen Sutherland.

ALTHOUGH the art historian Ernst Gombrich said that "There is no such thing as art. There are only artists", I think Helen Sutherland loved both art and artists.

Thanks to James Lowther, Head of Visual Arts, Maltings, Berwick-upon-Tweed, there is a rare and wonderful opportunity to see Truth and Beauty: The 20th Century British Art of Pioneering Collector Helen Sutherland, at the Granary Gallery this summer.

The exhibition explores the importance of her early patronage of artists, including Ben Nicholson, Winifred Nicholson, and David Jones. It's a rare chance to see some of their paintings that are not often on view, like Winifred's Yellow Flags and Moth (1932) and Pinks and Roses at Cockley Moor (1955).

Helen's father, Sir Thomas Sutherland, founded the Hong Kong and Shanghai Banking Corporation, aka HSBC, in 1865; became managing director of the Peninsula and Oriental Steam Navigation Company, aka P&O, in 1872; and Liberal MP for Greenock in 1884, three years after Helen's birth.

When he died in 1922 she was a wealthy woman, with no ties or family, as her marriage to Richard Denman. Liberal MP for Carlisle, had recently been annulled. Helen was one of the first to recognise a change in the cultural climate in the aftermath of the First World War, which offered a chance to rethink, reset, and rebuild anew; to simplify, and purify.

There was a strong puritan, ascetic, spiritual quality to her nature, which, combined with warmth and compassion, made her so loved and appreciated by those she took under her wing. She was a good, loyal and supporting friend, not just to artists like the Nicholsonsons and David Jones, but also to the Pitman Painters, to the poet Kathleen Raine, and, surprisingly, to some schoolboys from Newcastle-upon-Tyne!

Living in London in the 1920s, she began to collect paintings by Courbet, Seurat, Paul Nash, Duncan Grant, and Cedric Morris before, crucially, being one of the first to value the simplicity and purity of Mondrian.

She met Ben and Winifred Nicholson, who



Ben Nicholson: 1928 (Walton Wood cottage, no. 1). National Galleries of Scotland. Scottish National Gallery of Modern Art, Edinburgh. Presented by Miss Helen Sutherland 1965. © Angela VerrenTaunt. All rights reserved, DACS 2021.

They appreciated her interest too. One member, Jimmy Floyd, apparently said "Give her my picture. I can always paint another, but we could never get another Miss Sutherland." As James Lowther says she "regarded a painting by a pitman as every bit as worthy as a Picasso".

In 1939, aged sixty, she moved to Cockley Moor, a remote fastness high up in the Lake District fells above Glenridding. It was a bit rash, and hard to get servants! Somehow she attracted a cook, gardener, and chauffeur. Then, unexpectedly, with the war, came a handful of boys, from Newcastle, to avoid the bombing. Billed on locals, they stayed with her, attending school in Penrith, fifteen miles

* Truth and Beauty: The 20th Century British Art of Pioneering Collector Helen Sutherland, at the Granary Gallery, Berwick-upon-Tweed. May 21 to October 9. www.maltingsberwick.co.uk/

One hundred years at the Caurnie Soaperie.

TUCKED AWAY in the quiet Scottish town of Kirkintilloch is a small soaperie celebrating a big anniversary. Founded a hundred years ago, 2022 marks the centenary of Caurnie Soap Soaperie.

Returning from the battlefields of the First World War, weary of the misery he had seen, Scotsman Jimmy Little built a small humble building in Kirkintilloch and began making soap. The aim was simple: to create Scottish natural skin care products from organic herbs and essential oils. The business was an instant success, and today his grandson, Jim Little, runs the soaperie which still operates from the same small premises and uses the same traditional hand made methods.

As a boy in the 1960s, Jim helped on Saturdays and after graduating in the late 1970s in chemistry, he joined the family run business full-time. Visiting Caurnie Soaperie is like stepping back in time. From the soap-splattered granite floor to the rafters full of drying herbs filling the air with scents and the hundred year old soap cutting tools, this family run business is truly traditional and authentic, right down to its name: 'Caurnie' was the old name used for the town of Kirkintilloch. Set within its own organic herb garden, this unique, local award winning business creates the finest Scottish natural skin care products from organic herbs and essential oils. Their products are all vegan and hand made, using extracts of Scottish plants and old-fashioned methods that create a purer, gentler product.

They offer a wide range of natural skin care products including: fresh herb soap, nettle soap and botanical soaps, organic shampoos, shower gels and body washes, body butters and skin lotions, including the award-winning bog myrtle body butter.

"Our top 5 products are nettle soap, nettle shampoo, nettle moisturiser, Calendula lotion, Yarrow geranium soap, and I have to include the solid shampoo", says Jim.

This working soaperie also happens to be the oldest and last working soaperie in the world operating the cold process. The cold process is known as the natural way of soap making. Retaining the oils' natural glycerine (or glycerol) to help make the soap cleanse in a very gentle way and retaining the skin's natural oil mantle more effectively.

"Pure soap made since the first days is still sought after by Multiple Chemical Sufferers (MCS) and it has been associated with beneficial long term use", explains Jim. "For over 100 years we've been making an organic Vegan Nettle range, a favourite with people who suffer from psoriasis, eczemas or sensitive skin. It is hugely popular and helps so many of our skin problem sufferers."

The hand cutting assembly, and other machinery purchased in 1921 is unique and still used daily at the soaperie to hand press and cut every single bar of soap made today.

Caurnie grow all their own organic herbs including Lavender, Thyme, Sage, and Bog Myrtle, all of which can be seen hanging and drying in the soaperie building. All the herbs are

Continued overleaf

Continued overleaf

Continued overleaf

Continued overleaf

Continued overleaf

Continued overleaf

Continued overleaf

Continued overleaf

Continued overleaf

Continued overleaf

Continued overleaf

Continued overleaf

Guide

ST ANDREW BLACKADDER CHURCH HALL, St Andrew Street, North Berwick, EH39 4NF, 01620 894 196, www.standrewblackadder.org.uk, stephen-glocklock123@btinternet.com
GALLERY 27, Dunbar Business Center, 8 Spott Rd, Dunbar, EH42 1BS, 07922 676884
BARS ROCK POTTERY, TANTALLON ARTS & CRAFTS STUDIOS, Hatfield Barns Schoolhouse, North Berwick, EH39 5PW, 0131 467 8300
PAINTBOX ART CLASSES, Cockenzie House & Gardens, 22 Edinburgh Rd, Cockenzie, EH32 0HY, 07852 951 592, www.paintboxartclasses.com, paintboxart@outlook.com
May 7 & 8 Eleanor White.
May 14 & 15 Susie Wilson. Nature Within the Artist Book.
June 4 & 5 Kate Temple. Nature's Ink.
NATIONAL MUSEUM OF FLIGHT, East Fortune Airfield, North Berwick, EH39 5LF, 0300 123 6789
Until January 31 2025 Red Arrows Hawk T1A. Display
THE SCOTTISH ORNITHOLOGISTS' CLUB (SOC), Waterston House, Aberlady, EH32 0PY
Until June 5 Kimmie Jones & Wynona Legg.

Edinburgh
THE SCOTTISH NATIONAL GALLERY, The Mound, Princes Street, EH2 2EL, 0131 624 6200
Ongoing
 Dutch and Flemish Art 1600-1700. Display
Ongoing
 Painting as Spectacle. Paintings
SCOTTISH NATIONAL GALLERY OF MODERN ART, 75 Belford Road, EH4 3DR, 0131 624 6200
Until October 2 Barbara Hepworth. Art & Life. A major retrospective features more than 120 works
CITY ART CENTRE, 1-3 Market Street, EH1 1DE, 0131 529 3993
Until May 28 Kate Downie, Rachel Maclean, Alison Watt, David Eastace, Peter Howson, Anthony Hatwell and James Hamilton Finlay
June 4 - October 2 Will Maclean. Points of Departure. Works
THE ROYAL SCOTTISH ACADEMY BUILDING, Upper Gables, EH2 2EL, 0131 225 6671, www.royal.scottishacademy.org
Until June 12 The 196th Annual Exhibition.
THE SCOTTISH GALLERY, 16 Dundas Street, EH3 6HZ, 0131 556 1200, www.scottish-gallery.co.uk, mail@scottish-gallery.co.uk
May 5 - 28 Ewan McClure. Inside and Out. Sylvia von Hartmann. Sylvia von Hartmann at 80. Paintings and printmaking
 Ane Christensen and Daphne Krinos.
THE FRUITMARKET GALLERY, 45 Market Street, EH1 1DF, 0131 225 2383
NATIONAL MUSEUM OF SCOTLAND, Chambers Street, EH1 1HF, 0131 225 7534
May 25 - June 29 Collection Centre Tours.
May 6 - March 5 2023 Japanese Contemporary Design.
NATIONAL LIBRARY OF SCOTLAND, George IV Bridge, EH1 1EW, 0131 623 3700
Until May 28 Petticoats and Pinnacles: Scotland's pioneering mountain women.
SCOTTISH NATIONAL PORTRAIT GALLERY, 1 Queen St, EH2 1JD, 0131 624 6200
Until September 25 Kieran Dodds, Arpita Shah, Danny North, Thomas Annan and Hill & Adamson.
INVERLEITH HOUSE, Royal Botanic Garden, 20a Inverleith Row, EH3 5LR
THE QUEEN'S GALLERY, PALACE OF HOLYROODHOUSE, Palace of Holyroodhouse, Abbeyhill, EH8 8DX, 0131 556 5100
Until June 6 Seven Portraits: Surviving the Holocaust. Portraits
Until September 25 Masterpiece from Buckingham Palace: chance to enjoy paintings from the Royal Collection, with works by Rembrandt, Van Dyck, Rubens and Artemisia
TALBOT RICE GALLERY, University of Edinburgh, Old College, South Bridge, EH8 9YL, 0131 650 2211
Until May 21 Aisleen Doran, Jenny Hogarth, Sula'A man Majali, Stephanie Mann, Rosie O'Grady, Sarah Rose, Rae-Yen Song, Eothen Stearn, Tiko Iai and Mona Yoo.
June 25 - September 3

HENDERSON ARTSHOP, 28a Raeburn Place, Stockbridge, EH4 1HN, 0131 332 7800, www.hendersonartshop.com, info@hendersonartshop.com
 Framing prints materials
GALLERY TEN, 5 William Street, West End, EH3 7NG, 07957 855 426
EDINBURGH PRINTMAKERS WORKSHOP GALLERY, 23 Union Street, EH1 3LR, 0131 557 2479
Until June 26 Selected Prints from the Archive. Workshop
PATRIOT HALL GALLERY, 60 WARRIS, 141 Patriothall, off Hamilton Place, Stockbridge, EH15 5AY, 0131 226 7126
THE DUNDAS STREET GALLERY, 6a Dundas Street, EH3 6HZ, 0131 557 4050, www.dundas-street-gallery.co.uk, art@fasedinburgh.com
ROYAL BOTANIC GARDEN EDINBURGH, 20a Inverleith Row, EH3 5LR, 0131 552 7171
Until June 11 Jacqui Pestell & Sarah Roberts. Rhododendrons: Riddle.
Until November 1 Daisy Guided Walks.
EDINBURGH COLLEGE OF ART, Lauriston Place, EH3 9DF, 0131 221 6109
Until May 21 Aisleen Doran, Jenny Hogarth, Sula'A man Majali, Stephanie Mann, Rosie O'Grady, Sarah Rose, Rae-Yen Song, Eothen Stearn, Tiko Iai and Mona Yoo. Meet me at the threshold.
DOVECOT STUDIOS, 10 Infirmery Street, EH1 1LT, 0131 550 3660
Until June 11 The Art of Wallpaper - Morris & Co.. Explore the legacy of William Morris in over 130 original wallpapers.
June 24 - September 24 Alan Davie. Beginning of a Far-off World. Tapestry and rug
MORNING SIDE GALLERY, 94 Morningside Road, EH10 4BY, 0131 447 3041.
LEITH SCHOOL OF ART, 25 North Junction Street, EH6 6HW, 0131 554 5761, www.leithschoolofart.co.uk, enquiries@leithschoolofart.co.uk
Until June 17 (North Junction Street Campus)
 Thomas Whittle. Colour of Paper. New works exploring space, time, material process, and the history of painting
MUSEUMS COLLECTION CENTRE, 10 Broughton Market, EH3 6NU, 0131 556 9536
MCAUGHTAN'S BOOKSHOPS AND GALLERY, 3a & 4a Haddington Place, EH7 4AR, 0131 556 5897, www.mcaughtansbookshop.com, info@mcaughtans.co.uk
THE VELVET EASEL GALLERY, 298 Portobello High Street, Portobello, EH15 2AS, 0131 629 1121, velvet.co.uk
Until June 26 Spring Exhibition. Paintings, sculpture, pottery, ceramics and jewellery by local, Scottish and international artists
COBURG HOUSE ART STUDIOS, 15 Coburg Street, EH6 6ET, 0131 553 2266, www.coburg-houseartstudios.co.uk, exhibitions@coburghouse.co.uk
 A creative home for over 80 artists, makers and designers
EDINBURGH PALLETTE, St Margaret's House, 151 London Road, Midlothian, EH7 6AE, 0131 661 1924, www.edinburghpalette.co.uk, info@edinburghpalette.co.uk
May 6 - 13 Summer Show.
EDINBURGH ART SHOP, 129 Lauriston Place, EH3 9JN, 0131 229 1809, www.edinburghartshop.com, info@EdinburghArtShop.co.uk
SCOTTISH SOCIETY OF ARCHITECT-ARTISTS, RIAS,

Edinburgh
THE SCOTTISH NATIONAL GALLERY, The Mound, Princes Street, EH2 2EL, 0131 624 6200
Ongoing
 Dutch and Flemish Art 1600-1700. Display
Ongoing
 Painting as Spectacle. Paintings
SCOTTISH NATIONAL GALLERY OF MODERN ART, 75 Belford Road, EH4 3DR, 0131 624 6200
Until October 2 Barbara Hepworth. Art & Life. A major retrospective features more than 120 works
CITY ART CENTRE, 1-3 Market Street, EH1 1DE, 0131 529 3993
Until May 28 Kate Downie, Rachel Maclean, Alison Watt, David Eastace, Peter Howson, Anthony Hatwell and James Hamilton Finlay
June 4 - October 2 Will Maclean. Points of Departure. Works
THE ROYAL SCOTTISH ACADEMY BUILDING, Upper Gables, EH2 2EL, 0131 225 6671, www.royal.scottishacademy.org
Until June 12 The 196th Annual Exhibition.
THE SCOTTISH GALLERY, 16 Dundas Street, EH3 6HZ, 0131 556 1200, www.scottish-gallery.co.uk, mail@scottish-gallery.co.uk
May 5 - 28 Ewan McClure. Inside and Out. Sylvia von Hartmann. Sylvia von Hartmann at 80. Paintings and printmaking
 Ane Christensen and Daphne Krinos.
THE FRUITMARKET GALLERY, 45 Market Street, EH1 1DF, 0131 225 2383
NATIONAL MUSEUM OF SCOTLAND, Chambers Street, EH1 1HF, 0131 225 7534
May 25 - June 29 Collection Centre Tours.
May 6 - March 5 2023 Japanese Contemporary Design.
NATIONAL LIBRARY OF SCOTLAND, George IV Bridge, EH1 1EW, 0131 623 3700
Until May 28 Petticoats and Pinnacles: Scotland's pioneering mountain women.
SCOTTISH NATIONAL PORTRAIT GALLERY, 1 Queen St, EH2 1JD, 0131 624 6200
Until September 25 Kieran Dodds, Arpita Shah, Danny North, Thomas Annan and Hill & Adamson.
INVERLEITH HOUSE, Royal Botanic Garden, 20a Inverleith Row, EH3 5LR
THE QUEEN'S GALLERY, PALACE OF HOLYROODHOUSE, Palace of Holyroodhouse, Abbeyhill, EH8 8DX, 0131 556 5100
Until June 6 Seven Portraits: Surviving the Holocaust. Portraits
Until September 25 Masterpiece from Buckingham Palace: chance to enjoy paintings from the Royal Collection, with works by Rembrandt, Van Dyck, Rubens and Artemisia
TALBOT RICE GALLERY, University of Edinburgh, Old College, South Bridge, EH8 9YL, 0131 650 2211
Until May 21 Aisleen Doran, Jenny Hogarth, Sula'A man Majali, Stephanie Mann, Rosie O'Grady, Sarah Rose, Rae-Yen Song, Eothen Stearn, Tiko Iai and Mona Yoo.
June 25 - September 3

HENDERSON ARTSHOP, 28a Raeburn Place, Stockbridge, EH4 1HN, 0131 332 7800, www.hendersonartshop.com, info@hendersonartshop.com
 Framing prints materials
GALLERY TEN, 5 William Street, West End, EH3 7NG, 07957 855 426
EDINBURGH PRINTMAKERS WORKSHOP GALLERY, 23 Union Street, EH1 3LR, 0131 557 2479
Until June 26 Selected Prints from the Archive. Workshop
PATRIOT HALL GALLERY, 60 WARRIS, 141 Patriothall, off Hamilton Place, Stockbridge, EH15 5AY, 0131 226 7126
THE DUNDAS STREET GALLERY, 6a Dundas Street, EH3 6HZ, 0131 557 4050, www.dundas-street-gallery.co.uk, art@fasedinburgh.com
ROYAL BOTANIC GARDEN EDINBURGH, 20a Inverleith Row, EH3 5LR, 0131 552 7171
Until June 11 Jacqui Pestell & Sarah Roberts. Rhododendrons: Riddle.
Until November 1 Daisy Guided Walks.
EDINBURGH COLLEGE OF ART, Lauriston Place, EH3 9DF, 0131 221 6109
Until May 21 Aisleen Doran, Jenny Hogarth, Sula'A man Majali, Stephanie Mann, Rosie O'Grady, Sarah Rose, Rae-Yen Song, Eothen Stearn, Tiko Iai and Mona Yoo. Meet me at the threshold.
DOVECOT STUDIOS, 10 Infirmery Street, EH1 1LT, 0131 550 3660
Until June 11 The Art of Wallpaper - Morris & Co.. Explore the legacy of William Morris in over 130 original wallpapers.
June 24 - September 24 Alan Davie. Beginning of a Far-off World. Tapestry and rug
MORNING SIDE GALLERY, 94 Morningside Road, EH10 4BY, 0131 447 3041.
LEITH SCHOOL OF ART, 25 North Junction Street, EH6 6HW, 0131 554 5761, www.leithschoolofart.co.uk, enquiries@leithschoolofart.co.uk
Until June 17 (North Junction Street Campus)
 Thomas Whittle. Colour of Paper. New works exploring space, time, material process, and the history of painting
MUSEUMS COLLECTION CENTRE, 10 Broughton Market, EH3 6NU, 0131 556 9536
MCAUGHTAN'S BOOKSHOPS AND GALLERY, 3a & 4a Haddington Place, EH7 4AR, 0131 556 5897, www.mcaughtansbookshop.com, info@mcaughtans.co.uk
THE VELVET EASEL GALLERY, 298 Portobello High Street, Portobello, EH15 2AS, 0131 629 1121, velvet.co.uk
Until June 26 Spring Exhibition. Paintings, sculpture, pottery, ceramics and jewellery by local, Scottish and international artists
COBURG HOUSE ART STUDIOS, 15 Coburg Street, EH6 6ET, 0131 553 2266, www.coburg-houseartstudios.co.uk, exhibitions@coburghouse.co.uk
 A creative home for over 80 artists, makers and designers
EDINBURGH PALLETTE, St Margaret's House, 151 London Road, Midlothian, EH7 6AE, 0131 661 1924, www.edinburghpalette.co.uk, info@edinburghpalette.co.uk
May 6 - 13 Summer Show.
EDINBURGH ART SHOP, 129 Lauriston Place, EH3 9JN, 0131 229 1809, www.edinburghartshop.com, info@EdinburghArtShop.co.uk
SCOTTISH SOCIETY OF ARCHITECT-ARTISTS, RIAS,

Edinburgh
THE SCOTTISH NATIONAL GALLERY, The Mound, Princes Street, EH2 2EL, 0131 624 6200
Ongoing
 Dutch and Flemish Art 1600-1700. Display
Ongoing
 Painting as Spectacle. Paintings
SCOTTISH NATIONAL GALLERY OF MODERN ART, 75 Belford Road, EH4 3DR, 0131 624 6200
Until October 2 Barbara Hepworth. Art & Life. A major retrospective features more than 120 works
CITY ART CENTRE, 1-3 Market Street, EH1 1DE, 0131 529 3993
Until May 28 Kate Downie, Rachel Maclean, Alison Watt, David Eastace, Peter Howson, Anthony Hatwell and James Hamilton Finlay
June 4 - October 2 Will Maclean. Points of Departure. Works
THE ROYAL SCOTTISH ACADEMY BUILDING, Upper Gables, EH2 2EL, 0131 225 6671, www.royal.scottishacademy.org
Until June 12 The 196th Annual Exhibition.
THE SCOTTISH GALLERY, 16 Dundas Street, EH3 6HZ, 0131 556 1200, www.scottish-gallery.co.uk, mail@scottish-gallery.co.uk
May 5 - 28 Ewan McClure. Inside and Out. Sylvia von Hartmann. Sylvia von Hartmann at 80. Paintings and printmaking
 Ane Christensen and Daphne Krinos.
THE FRUITMARKET GALLERY, 45 Market Street, EH1 1DF, 0131 225 2383
NATIONAL MUSEUM OF SCOTLAND, Chambers Street, EH1 1HF, 0131 225 7534
May 25 - June 29 Collection Centre Tours.
May 6 - March 5 2023 Japanese Contemporary Design.
NATIONAL LIBRARY OF SCOTLAND, George IV Bridge, EH1 1EW, 0131 623 3700
Until May 28 Petticoats and Pinnacles: Scotland's pioneering mountain women.
SCOTTISH NATIONAL PORTRAIT GALLERY, 1 Queen St, EH2 1JD, 0131 624 6200
Until September 25 Kieran Dodds, Arpita Shah, Danny North, Thomas Annan and Hill & Adamson.
INVERLEITH HOUSE, Royal Botanic Garden, 20a Inverleith Row, EH3 5LR
THE QUEEN'S

The ArtWork Guide

15 Rutland Square, EH1 2BE, www.sassanagallery.org.uk
COLLECTIVE GALLERY, City Observatory, 38 Calton Hill, EH7 5AA, 0131 556 1264
 Ongoing
 Tessa Lynch. Turns. Sculpture and performance
THE SALTIRE SOCIETY, 9 Fountain Close, 22 High Street, EH1 1TE, 0131 556 1836, www.saltiresociety.org.uk, saltire@saltiresociety.org.uk
 Artistic interests include awards for the weans in Scottish song, and for artists in Arts and Crafts in Architecture
STILLS GALLERY, 23 Cockburn Street, EH1 1BP, 0131 622 6200
 Until June 25
 Robbie Lawrence. Northern Library
THE ADAM POTTERY, 7 Henderson Row, EH3 5BA, 0131 557 3978
 Thrown, sculptural and handbuilt ceramics
ISTITUTO ITALIANO DI CULTURA, 82 Nicolson Street, EH8 9NF, 0131 668 2332
 Ongoing
 Artists' lectures, exhibitions & performances; Italian classes
L'INSTITUT FRANÇAIS D'ÉCOSSSE, West Parliament Square, EH1 1RF, 0131 285 6030
WITSPAC GALLERY, 76 East Crosscauseway, EH8 9HQ, 0781 451 4771, whitespace76.com
 May 7 - 11
 Hugh Crowd
MUSEUM OF EDINBURGH, Huntly House, 142 Canongate, Royal Mile, High Street, EH8 8DD, 0131 529 4143
ALPHA ART GALLERY, 52 Hamilton Place, Stockbridge, EH3 5AX, 0131 226 3066
THE WRITERS' MUSEUM, Lady Stair's Close, EH1 2PA, 0131 529 4901
RICCIO GALLERY, 17 South Street, Dalkeith, Midlothian, EH22 1AH, 0131 660 2561
AMBER ARTS, 78 Montrose Terrace, Abbeyhill, EH7 5DF, 0131 661 1167
 Picture Framers, Art Gallery and Printmaking Studio
SUMMERHALL, 1 Summerhall, EH9 1PL, 0131 560 1580
 Ongoing
 The Demarco European Art Foundation
ART ET FACTS GALLERY, 19 Roseburn Terrace, EH12 5NG, 0131 346 7730
ROYAL FINE ART COMMISSIONS GALLERY, Balconiche, 146 Canongate, Midlothian, EH8 8DD
DOUBTFIRE GALLERY, 3 South East Circus Place, EH3 6TJ, 0131 225 6540
 Until May 28
 Christian Moore. Nature Couture. First solo
QUEENSFERRY MUSEUM, 53 High Street, South Queensferry, West Lothian, EH39 9HF, 0131 331 5545
 Helps visitors to explore the past and traditions of historic Queensferry and neighbouring Dalmeny
THE PEOPLE'S STORY MUSEUM, 163 Canongate, Royal Mile, EH8 8BN, 0131 529 4057
THE FINE ART SOCIETY, 6 Dundas Street, EH3 6GJ, 0131 257 4050
 Until May 21
 Modern
CURIOUSER AND CURIOUSER, 93 Broughton Street, EH1 3RZ, 0131 556 1866, www.curiouserandcuriouser.com, hello@curiouserandcuriouser.com
UPRIGHT GALLERY, 3 Barelly Terrace, EH10 4HP, 0131 221 0265 & GALLERY, 17 Dundas Street, EH3 6QC
 May 7 - June 1
 Michelle Benoit, Jon Thomas & Molly Thomson. Line, Colour & Form. Works
SCOTTISH ARTS CLUB, 24 Rutland Square, EH1 2BW, 0131 229 8157, www.scottishartsclub.com
 May 4 - June 4
 Members' Summer Exhibition
NATIONAL WAR MUSEUM, Edinburgh Castle, EH1 2NG, 0300 123 6789
 Until January 29 2023
 Legacies of Empire
THE GRILLI GALLERY, 20A Dundas Street, EH3 6HZ, 0131 261 4264
MUSEUM OF CHILDHOOD, 42 High Street, Royal Mile, High Street, EH1 1TG, 0131 529 4142
3D/2D, Unit 3, Albion Business Centre, 78 Albion Road, EH7 5QZ, 0131 661 6600, www.3d2d.co.uk, info@3d2d.co.uk
 May 2 - 5
 Flair @ B3. Brings together some of Scotland's finest Artists, Designers and Makers, all selling only their own work
 June 23 - 26
 The Royal Highland Show. Show-

case event with 80+ exhibitors
HISTORIC ENVIRONMENT SCOTLAND, Longmore House, Salisbury Place, EH9 1SH, 0131 668 8600, www.historicenvironment.scot
 Until June 5 (Fort George)
 Scottish Stained Glass: A Mirror to the World
THE EDINBURGH DRAWING SCHOOL, 13a Great King Street, EH3 6QW, 0131 556 0971, www.edinburghdrawingschool.co.uk, info@edinburghdrawingschool.co.uk
 Until June 27
 Spring Term II 2022. Oil painting, anatomy, life drawing
June 2 - August 14
 Summer School 2022

Falkirk

THE PARK GALLERY AND CALLENDAR HOUSE, Callendar Park, FK1 1YR, 01324 503 789, www.falkirkcommunitytrust.org/venues/park-gallery, artsandcrafts@falkirkcommunitytrust.org
THE WEST END GALLERY, 5-45 West Bridge Street, FK1 5AZ, 01324 613 100
D2 THE CREATIVE CENTRE, Lochlands Business Park, Larbert, FK5 3NS, 01324 555 500
 A fantastic exhibition space and 14 artists studios and workspaces for rent or lease
June 17 - October 23
 Jack Vetrinano: The Early Years 2022
CUPAR ARTS & HERITAGE PROJECT (CAHP), 5 Ashlar Park, Lovers Lane, Cupar, KY15 5PE
PETE CURA PICTURE FRAMING, At the Gallery, Burnside, Cupar, KY15 4BH, 01334 652 353
 Fine cuts by Barbara Robertson. Caricatures by Donald Smart. New editions by Sonas MacLean. Framing over 100 mouldings to choose from
EAST NEUK OPEN STUDIOS, East Neuk, www.eastneukopenstudios.org
 June 25 & 26 (and July 2 & 3)
 Artists' Open Studios 2022
MAISIE & MAC ART AND CONTEMPORARY CRAFT, 1 St Catherine Street, Cupar, KY15 4LS, 01334 656 523, www.maisieandmac.com, info@maisieandmac.com
 Paintings, prints, sculpture, textiles, ceramics, wood & metal from UK artists and makers
Ongoing
 Art and Contemporary Craft - Celebrating 10 Years
PITTEWEE ARTS FESTIVAL, Festival Office, 47 High Street, Pittenweem, KY10 2PG, 01333 313 903, www.pittenweemartsfestival.co.uk, info@pittenweemartsfestival.co.uk
 August 6 - 13
 Pittenweem Arts Festival 2022. A celebration of the visual arts; taking place in galleries, homes, studios and venues throughout Pittenweem
WEEM GALLERY AND FRAMER, 16 High Street, Pittenweem, KY10 2LA, 01333 311535, www.weemgalleryandframer.co.uk, info@weemgalleryandframer.co.uk
 Until May 28
 Jessica Oliver and Lucy Newton. Spring Exhibition
FUNKY SCOTTISH, 41 High Street, Pittenweem, KY10 2PG, 01333 312 567
JOHN NELSON STUDIO GALLERY, 26 Milton Place, (on A917 15mins from St Andrews), Pittenweem, KY10 2LS, 01333 312 112
 Featuring paintings and prints by John Nelson
CULROSS POTTERY AND GALLERY & BOUTIQUE (CAF), Sandhaven, Culross, (near Dunfermline), KY12 8JG, 01383 882176, www.culrosspottery.com, camilla@culrosspottery.com
FIRE STATION CREATIVE, KY12 7AN, 01383 721 564, www.firestationcreative.co.uk, sarah@firestationcreative.co.uk
 May
 Phoenix rising from the ashes
JENI FRAME, 07967 644 592, www.jeniframe.co.uk, jeni@jeniframe.com
 Artwork framing - bespoke and restoration; Gliding service - traditional water and oil
FORGAN ART CENTRE, Cupar Road, Newport-on-Tay, DD8 8EA, 0182 542 062, www.forganartscentre.co.uk, info@forganartscentre.co.uk



A traditional soapmaker (cont. from p 9)

and further stocked the UFO shaped glycerine soaps in cucumber, rose and fern, to name a few.
 Carmie then began doing markets and are now regulars at the Edinburgh Farmers' Market in Castle Terrace on Saturdays and the Stockbridge Sunday Market, as well as at markets across Scotland and at The Country Living shows.
 Jim says: "Markets have had a hugely positive impact for Carmie in the 30 years we've been doing them. Interacting directly with customers allows us to get to know them and build a relationship."
 "Looking forwards, I see the company continuing to build on our wonderful history and legacy. Here's to the next 100 years!"
 You can buy directly from the Carmie website, or catch Carmie Soaps at one of the local farmers' markets.
Carmie Soapie - Canal Lane, Kirkintilloch, Glasgow G66 1QZ. 0141 776 1218 www.carmie.com
FRANCES ANDERSON

Pottery Courses in Arbroath Weekly, Weekends & 5 Day

www.franmarquis.com

boo vake artist-designed gifts & homewares

Boo Vake, 5 Watergate, Perth ph1 5f
 www.boovake.co.uk instagram/facebook/twitter

SANDBANK STUDIO Wide range of original paintings by **Duncan Currie** Old Pier Rd Broadford Isle of Skye Tel: 01471 822064 duncan@sandbank.plus.com www.duncancurrie.co.uk

May 21 & 22
 Jean Duncan. Exploring Collage: 2 Day Workshop.
CRAIL POTTERY, 75 Nethergate, The Square, Crail, KY10 3TX, 01333 451 212
 Huge variety of handthrown stoneware, terracotta, earthenware & raku
SCOTTISH FISHERIES MUSEUM, St Ayles, Harbourhead, Anstruther, KY10 3AB, 01333 310 628
GRISELDA HILL POTTERY LTD, Kirkbrac, Ceres, Cupar, KY15 5ND, 01334 828 273
 Wemyss Ware. Filie's famous hand painted pottery
KINGHORN GALLERY, Kinghorn, KY3 9RT, 01592 890 218
BALBIRNIE CRAFT CENTRE, Markinch, Glenrothes, Tayside, KY7 6NE, 01592 753 743
 Alison & Roy Murray goldsmithing & jewellery; also at 20 Thistle Street, Edinburgh
TWYST FIBRE CRAFT STUDIO, 88 High Street, Newburgh, Cupar, KY14 6AQ, 01337 842 843
 Workshops and supplies - knitting, weaving, spinning, felt making, natural dyeing. Natural fibre yarns, books, magazines, equipment and kits
FIFE FOLK MUSEUM, High Street, Ceres, KY15 5NE, 01334 828 180
OPEN STUDIOS NORTH FIFE, www.openstudiosfife.co.uk
 Artists & makers open their workspaces to visitors the first full weekend in May annually
CONTEMPORARY ARTS DUNFERMLINE (CAD), Upper Mall, The Kingsgate, Dunfermline
 Until June 7
 Sara Howard. Craft Pods' Tour 2021-22. Circular ceramics
THE QUAY GALLERY, 33 High Street, Aberdeen, KY3 0SH, 01383 860 660
KIRKCALDY ART CLUB, Hot Pot Wynd, Dysart, Kirkcaldy, KY21 2D, 01592 203270
 Painting classes, Monday 2-4pm and 7-9pm, Tuesday 7-9pm and Thursday. Honorary. Pottery classes, Monday 10-12pm and 7-9pm, Tuesday 7-9pm and Wednesday 2-4pm
BIRCHWOOD COTTAGE GALLERY & TEAROOM, Balmungo, St Andrews, KY16 8LW, 01334 208220
 Gallery/leisure just outside St Andrews on the G1. Mixed rolling exhibition of original art work and prints by local artists
ST. ANDREWS ART CLUB, 14c Argyle Street, St Andrews, KY16 9BP, www.standrewsartclub.co.uk
PAGE POTTERY GALLERY, 49 High Street, Pittenweem, KY10 2PG, 01333 311402
GREENGATE GALLERY, Sandhaven, Culross, KY12 8JG, greengategallery@bt.com
Fort William
ART LOCHABER, Lochaber, www.artlochaber.co.uk
 A group of artists living in Lochaber
LINE TREE AN EALDHAIN GALLERY, Achintore Road, PH33 6RQ, 01297 701 806, www.artfortwilliam.co.uk, info@linetreefortwilliam.co.uk
 David Wilson Paintings Ongoing
 David Wilson. Art Fort William. Paintings & Prints
THE HIGHLAND BOOKSHOP, 60 High Street, PH33 6AH, www.highlandbookshop.com
 60 High Street, Fort William PH33 6AH
BEN NEVIS DISTILLERY, Lochy Bridge, PH33 6TJ, 01397 70276
Glasgow
KELVINGROVE ART GALLERY & MUSEUM, Argyle Street, G3 8AG, 0141 287 2699
GALLERY OF MODERN ART (GOMA), Royal Exchange Square, G1 3AH, 0141 287 3050
GLASGOW SCHOOL OF ART, 167 Renfrew Street, G3 6RQ, 0141 353 4589, www.gsa.ac.uk
 Until May 8
 Various artists. Close of Play. Art Making for Earthly Survival
RGI KELLY GALLERY, 118 Douglas Street, G2 4ET, 0141 248 6386, www.royalgasgowinstitute.org/kelly.html, gallery@royalgasgowinstitute.org
 May 17 - 21
 Glasgow Kelvin College students and lecturers. The Enemy of Art.
 June 7 - 25
 Members of the RGI.
GLASGOW ART CLUB, 185 Bath Street, G2 4HU, 0141 248 5210, www.glasgowartclub.co.uk, info@glasgowartclub.co.uk
 May 11 - June 11
 Various artists. Members' Spring Exhibition 2022.

GLASGOW MUSEUM RESOURCE CENTRE, 200 Woodhead Road, South Nishill Industrial Estate, G53 7NN, 0141 276 9300
THE GLASGOW GALLERY, 182 Bath Street, G2 4HG, 0141 333 1991, www.glasgowgallery.co.uk, info@glasgowgallery.co.uk
 May 7 - 28
 Moy Mackay. My Scotland... My Beautiful Land
June 11 - August 27
 Sandra Moffat, David Marshall, David Gardner, John Bathgate, Samantha McCubbin, Pete Morrison, Jane Roy, Peter Foyle, Senja Brendon. Mixed Summer
COMPASS GALLERY, 178 West Regent Street, G2 4RL, 0141 221 6370, www.compassgallery.co.uk, web@compassgallery.co.uk
 Until May 14
 "A Painter's Passion" Alma Wolfson
CYRIL GERBER FINE ART, 178 West Regent Street, G2 4RL, 0141 221 3095, www.gerberfineart.co.uk, mail@gerberfineart.co.uk
 19th-21st Century British Paintings, Drawings & Sculpture including works by Scottish Contemporaries and Modern Masters
GLASGOW MUSEUMS, Culture and Sport Glasgow, 20 Tronagate, G1 5ES, 0141 287 4350
 Call or visit website for full details
ST MUNGO MUSEUM OF RELIGIOUS LIFE AND ART, 2 Castle Street, Glasgow City, G4 0RL, 0141 276 1625
RIVERSIDE MUSEUM, 1 Bunhouse Road, G3 8DP, 0141 287 2720
 Scotland's Museum of Transport and Road Transport
 Until December 17
 Dorothea Pullinger displays honours trailblazing automotive engineers
SCOTLAND'S SCOTTISH SCHOOL MUSEUM, 225 Scotland Street, G5 8QB, 0141 287 5050
CENTRE FOR CONTEMPORARY ARTS (CCA), 350 Sauchiehall Street, G2 3JD, 0141 352 4900
MACKINTOSH CHURCH, CRM Society, Queen's Cross Church, 870 Garcube Road, G20 7EL, 0141 660 000, www.crmociety.com, trish@crmociety.com
THE HUNTERIAN MUSEUM AND ART GALLERY, University of Glasgow, University Avenue, G2 8QQ, 0141 330 4221
 Ongoing
 Permanent Displays. Highlight various aspects of our extensive collections
MILLAN GALLERIES, 270 Sauchiehall Street, G2 3EH, 0141 565 4137
THE ANNAN GALLERY, 164 Woodlands Road, G3 6LL, 0141 353 4046
CASTLE GALLERY, 43 Castle Street, IV2 3DU, 01463 729 512, www.castlegallery.co.uk
 May 6 - 28
 David Body. Mindscapes - From Reality to Abstraction.
 June 3 - 25
 Original paintings.
EDEN COURT THEATRE, Eden Court, Bishopton Road, IV3 5SA, 01463 234 224
 Until June 28
 Eden Court Youth Film 13-15 years. Film making
PICTURE THIS, 18 Church Street, IV1 5ER, 01463 238823
SCOTTISH FLAIR ART GALLERY, 11 Bank Street, IV1 1QY, 01463 718 999, www.highlandprintstudio.co.uk, info@highlandprintstudio.co.uk
 Ongoing - online
 Online gallery and shop
 June 25 & 26
 Collagraph. A method of printmaking that uses texture to create a wide variety of tone and line on a plate
EDEN COURT THEATRE, Eden Court, Bishopton Road, IV3 5SA, 01463 234 224
 Until June 28
 Eden Court Youth Film 13-15 years. Film making
PICTURE THIS, 18 Church Street, IV1 5ER, 01463 238823
SCOTTISH FLAIR ART GALLERY, 11 Bank Street, IV1 1QY, 01463 718 999
 Working studio and gallery - paintings depict the climatic changes of the Highlands and Islands
ORROST GALLERY, Half Bovean, nr Dunvegan, IV55 8ZB, 01470 521 207
 Selling exhibitions of professional artworks by local artists in Skye & Highlands
RAVEN PRESS GALLERY, Colbost, June 26th, IV55 8ZS, 01470 511 748
 Wood engravings of landscape and wildlife. Restit dyed silks and hand knit design. Working studio of engraver Kathleen Lindsay
Kelso
THE VENNEL GALLERY, Denise Playfair, 11 Bridge Street, TD5 7HT, 01573 224 003, vennelgallery@live.co.uk
 Bespoke Picture Frame. Animal portrait commissions. Art and needlework supplies
KELOSO POTTERY, The Knowes, 100 meters behind Kelso Abbey, TD5 7BH, 01573 224 027

man, PH37 4LT, 01397 722 334
GLENNAN STATION MUSEUM, Station Cottage, Glenfannan, PH37 4LT, 01397 722 295
THE LAUNDRY GALLERY, Aviemore, PH22 1ST
Isle of Arran
STUDIO A, Shore Road, Lamash, KA27 8LA, 01770 600 919
 Lively contemporary art, Masako Ritchie, Barbara Young, Scott Irvine, Kirti Mandir, R. Lele new works by J. Brookhuizen
Isle of Bute
MOUNT STUART, Mount Stuart, PA20 9LR, 01700 503 877
 Original art, home made cakes and puddings, leaf and herbal teas, coffee plus traditional music
Isle Of Harris
SKOON ART CAFE, 4 Geocrab, HISS 3HB, 01859 530 268
 Original art, home made cakes and puddings, leaf and herbal teas, coffee plus traditional music
Isle Of Islay
THE GALLERY, Bowmore Distillery Visitor Centre, School Street, Bowmore, PA43 7J5, 01496 810 441
 Regular exhibitions by local artists
Isle of Lewis
AN LANSTAIR, Town Hall, Kenneth Street, Stornoway, HS1 2DS, 01851 703 307
 Ongoing
 May 6 - 26
 The Road Dance. A coming-of-age drama set in the years surrounding WW1
 Until June 4
 Annie Cattell. The Gach Nà-Ceangail! Everything is Connected. New work
HARBOUR VIEW GALLERY, Port Ness, HS20X, 01851 810 735
 Original paintings and prints by Anthony J Barber
MORVEN GALLERY, Upper Barvas, Outer Hebrides, HS2 0XQ, 01851 840 216
 Changing exhibitions of original art, crafts, photography & tapestry weaving
Isle of Skye
DANDELION DESIGNS, Stein, Waterish, IV55 8KA, 01470 592 218, www.dandelion-designs.co.uk
 Permanent exhibition of many contemporary and traditional artists and an interesting range of crafts
SANDBANK STUDIO, Old Pier Road, Sandbank, Broadford, IV3 9AE, 01471 822 011, www.duncancurrie.net, duncan.currie@tsicall.co.uk
 Wide range of original paintings by Duncan Currie and works by Pam Carter and other well-known Scottish artists
Ongoing
 Duncan Currie. Wide range of original paintings
AROS SKYE HERITAGE CENTRE, Viewfield Road, Portree, IV51 9EU, 01478 613 750
 Video exhibition of Skye scenery and local history
EDINBANE POTTERY, Edinbane, Portree, IV51 9PW, 01470 582 234
GALLERY AN TALLA DEARG, Orasay, Sleat, IV43 8QR, 01471 833 439, www.eilean-iarraim.co.uk, hote@eilean-iarraim.co.uk
 June 17 - 29
 Lynne Forrester. Lynne Forrester Art Exhibition. Original artwork
DIANA MACKIE, 10 Borreraig Park, Dunvegan, IV55 8ZX, 01470 511 795
 Working studio and gallery - paintings depict the climatic changes of the Highlands and Islands
ORROST GALLERY, Half Bovean, nr Dunvegan, IV55 8ZB, 01470 521 207
 Selling exhibitions of professional artworks by local artists in Skye & Highlands
RAVEN PRESS GALLERY, Colbost, June 26th, IV55 8ZS, 01470 511 748
 Wood engravings of landscape and wildlife. Restit dyed silks and hand knit design. Working studio of engraver Kathleen Lindsay
Kelso
THE VENNEL GALLERY, Denise Playfair, 11 Bridge Street, TD5 7HT, 01573 224 003, vennelgallery@live.co.uk
 Bespoke Picture Frame. Animal portrait commissions. Art and needlework supplies
KELOSO POTTERY, The Knowes, 100 meters behind Kelso Abbey, TD5 7BH, 01573 224 027

A Saturday night horror movie

FROM DIRECTING nine episodes of the Scotland soap *River City*, to a premiere of your own movie at Toronto Film Festival, is quite a career trajectory.
 Yet for film director Ruth Paxton, who studied at Edinburgh College of Art, it's all part of the process.
 Brought up by social worker father and mature art student mother, she used some of the camcorders of her father's when she was younger to experiment with films.
 "They were often used to record prisoners in my father's work", she said.
 Always a film lover to the point of obsession, their local video shop said they had the highest video rentals of anyone in the area, and she and her brother admitted to watching *Jurassic Park* over 30 times.
 Her brand-new film, *A Banquet*, has just come out on digital release and is currently touring UK film festivals. The film is a kind of horror-satire. Written by Justin Bull, starring Sienna Guillory and Lindsay Duncan, it explores teenage body image, depression and eating disorders.
 "A Banquet is an ambitious film to attempt under any circumstances. Paxton reveals that the nightmarish work of the Scottish artist Ken Currie was a big influence.
 "The pitch was kind of *Chef's Table* meets David Cronenberg," says Paxton of the film's grisly gastronomy.
 "It is a slow-burning psychological horror, which, at its core, is about a family dealing with grief," she said. Widowed Holly is mother to two teenage girls and is struggling to maintain the middle-class family lifestyle per two daughters Betsy and Holly are used to.
 Betsy is at that hard age about to make the transition from school to university - but she doesn't really know what she wants to do. For Betsy's

generation it's becoming more and more difficult to have confidence in the future, let alone invest in one.
 "I imagine there will be mothers and daughters who recognize themselves in the women of this film, and I am always interested in finding ways to encapsulate the potency of maternal love.
 "I guess the film lets us know that being a mother is hard, and being a teenager is hard, especially in these times. Hopefully, it will invite women not to be so hard on themselves," Paxton said.
 Despite the fact that the film has been put in the horror genre, Paxton doesn't see herself as a horror filmmaker, a label she's been tagged with since art college.
 "I made a lot of films at art college, but my graduation film, the one that set me on my way, was about a woman who was basically drinking too much, got really f***ed, woke up the next day, had the fear, didn't know what she'd done, and had this kind of mad, abstract experience.
 "It was programmed in a lot of horror festivals, and I was like, 'I don't think it's a horror; that's just what happened to me last Saturday!'"
 Having grown up in Edinburgh in a family of film lovers she remembers the gilded times when her grandparents attended the *Diamonds are Forever* premiere at the old Odeon on Clerk Street, when Sean Connery presented someone with a diamond necklace.
 "The pitch was kind of *Chef's Table* meets David Cronenberg," says Paxton of the film's grisly gastronomy.
 "It is a slow-burning psychological horror, which, at its core, is about a family dealing with grief," she said. Widowed Holly is mother to two teenage girls and is struggling to maintain the middle-class family lifestyle per two daughters Betsy and Holly are used to.
 Betsy is at that hard age about to make the transition from school to university - but she doesn't really know what she wants to do. For Betsy's

Mugs, jugs, bowls & 'Time Tablers' fired in the Kelso Pit Kiln
Kingussie
IONA GALLERY, Duke Street, PH21 1JG, 01540 664 535, www.theionagallery.com
 Regular exhibitions by local artists in 'handmade in the Cairngorms'
May 16 - 22
 Textile Art Exhibition.
May 25 - 30
 Sandra Robertson. Artist in Residence
June 16 - 20
 Mike Evans / Rod Purcell / Ronnie Thain
June 16 - 20
 Creative Cairngorms
Kirkcudbright
KIRKCUDBRIGHT GALLERIES, St Mary Street, DG5 4AQ, 01567 331 276, www.kirkcudbrightgalleries.org.uk
 Until July 10
 The Gallows Hoard. Viking Age Treasure. A National Museums Scotland Touring Exhibition
July 30 - October 30
 Raymond Briggs: A Retrospective.
HARBOUR COTTAGE GALLERY, Castlebank, Kirkcudbright, DG6 4LB, 01557 330 073, www.harbourcottagegallery.org.uk
PROFESSIONAL ARTISTS POP UP SHOP, 67 St Mary's Street, DG6
 Applied Art from 20 artists living and working in Dumfries and Galloway (see editorial this issue)
HIGH ST. GALLERY, 84 High Street, Kirkcudbright, DG6 4JL, 01557 331 660
THE WHITEHOUSE GALLERY, 47 St Mary Street, Kirkcudbright, DG6 4DL, 01557 330 223
 Until June 25
 Canvas & Clay. Paintings and pottery
OCEAN GALLERY & STUDIO, 76 High Street, Kirkcudbright, DG6 4JL, 01557 428 088, www.oceargallery.co.uk
 Working gallery and studio
THE STEWARTRY MUSEUM, 47 St Mary Street, Kirkcudbright, DG6 4DU, 01557 330223
TOLBOOTH ART CENTRE, High Street, Kirkcudbright, DG6 4JL, 01557 331 556
THE STEWARTRY MUSEUM, 47 St Mary Street, Kirkcudbright, DG6 4DU, 01557 330223
HOLBOOTH ART CENTRE, High Street, Kirkcudbright, DG6 4JL, 01557 331 556
THE STEWARTRY MUSEUM, 47 St Mary Street, Kirkcudbright, DG6 4DU, 01557 330223
 Miniature paintings & larger works in oil, pastel & watercolour
LANE 2 Gibson
KIRKCUDBRIGHT ARTS & CRAFTS TRAIL
ARTISTS & MAKERS POP-UP SHOP, Mill on the Fleet Visitor Centre, 65 High Street, Gatehouse of Fleet, DG7 2HS, 01556 814 099
 Stocked and staffed by local professional designer makers
JOSHUA MILES ART STUDIO, 57 Castle Street, DG6 4JL
 Art studio open to the public
enquiry@cornerwaysart.co.uk/studio
 Miniature paintings & larger works in oil, pastel & watercolour
LANE 2 Gibson
KIRKCUDBRIGHT ARTS & CRAFTS TRAIL
ARTISTS & MAKERS POP-UP SHOP, Mill on the Fleet Visitor Centre, 65 High Street, Gatehouse of Fleet, DG7 2HS, 01556 814 099
 Stocked and staffed by local professional designer makers
JOSHUA MILES ART STUDIO, 57 Castle Street, DG6 4JL
 Art studio open to the public
enquiry@cornerwaysart.co.uk/studio
 Miniature paintings & larger works in oil, pastel & watercolour
LANE 2 Gibson
KIRKCUDBRIGHT ARTS & CRAFTS TRAIL
ARTISTS & MAKERS POP-UP SHOP, Mill on the Fleet Visitor Centre, 65 High Street, Gatehouse of Fleet, DG7 2HS, 01556 814 099
 Stocked and staffed by local professional designer makers
JOSHUA MILES ART STUDIO, 57 Castle Street, DG6 4JL
 Art studio open to the public
enquiry@cornerwaysart.co.uk/studio
 Miniature paintings & larger works in oil, pastel & watercolour
LANE 2 Gibson
KIRKCUDBRIGHT ARTS & CRAFTS TRAIL
ARTISTS & MAKERS POP-UP SHOP, Mill on the Fleet Visitor Centre, 65 High Street, Gatehouse of Fleet, DG7 2HS, 01556 814 099
 Stocked and staffed by local professional designer makers
JOSHUA MILES ART STUDIO, 57 Castle Street, DG6 4JL
 Art studio open to the public
enquiry@cornerwaysart.co.uk/studio
 Miniature paintings & larger works in oil, pastel & watercolour
LANE 2 Gibson
KIRKCUDBRIGHT ARTS & CRAFTS TRAIL
ARTISTS & MAKERS POP-UP SHOP, Mill on the Fleet Visitor Centre, 65 High Street, Gatehouse of Fleet, DG7 2HS, 01556 814 099
 Stocked and staffed by local professional designer makers
JOSHUA MILES ART STUDIO, 57 Castle Street, DG6 4JL
 Art studio open to the public
enquiry@cornerwaysart.co.uk/studio
 Miniature paintings & larger works in oil, pastel & watercolour
LANE 2 Gibson
KIRKCUDBRIGHT ARTS & CRAFTS TRAIL
ARTISTS & MAKERS POP-UP SHOP, Mill on the Fleet Visitor Centre, 65 High Street, Gatehouse of Fleet, DG7 2HS, 01556 814 099
 Stocked and staffed by local professional designer makers
JOSHUA MILES ART STUDIO, 57 Castle Street, DG6 4JL
 Art studio open to the public
enquiry@cornerwaysart.co.uk/studio
 Miniature paintings & larger works in oil, pastel & watercolour
LANE 2 Gibson
KIRKCUDBRIGHT ARTS & CRAFTS TRAIL
ARTISTS & MAKERS POP-UP SHOP, Mill on the Fleet Visitor Centre, 65 High Street, Gatehouse of Fleet, DG7 2HS, 01556 814 099
 Stocked and staffed by local professional designer makers
JOSHUA MILES ART STUDIO, 57 Castle Street, DG6 4JL
 Art studio open to the public
enquiry@cornerwaysart.co.uk/studio
 Miniature paintings & larger works in oil, pastel & watercolour
LANE 2 Gibson
KIRKCUDBRIGHT ARTS & CRAFTS TRAIL
ARTISTS & MAKERS POP-UP SHOP, Mill on the Fleet Visitor Centre, 65 High Street, Gatehouse of Fleet, DG7 2HS, 01556 814 099
 Stocked and staffed by local professional designer makers
JOSHUA MILES ART STUDIO, 57 Castle Street, DG6 4JL
 Art studio open to the public
enquiry@cornerwaysart.co.uk/studio
 Miniature paintings & larger works in oil, pastel & watercolour
LANE 2 Gibson
KIRKCUDBRIGHT ARTS & CRAFTS TRAIL
ARTISTS & MAKERS POP-UP SHOP, Mill on the Fleet Visitor Centre, 65 High Street, Gatehouse of Fleet, DG7 2HS, 01556 814 099
 Stocked and staffed by local professional designer makers
JOSHUA MILES ART STUDIO, 57 Castle Street, DG6 4JL
 Art studio open to the public
enquiry@cornerwaysart.co.uk/studio
 Miniature paintings & larger works in oil, pastel & watercolour
LANE 2 Gibson
KIRKCUDBRIGHT ARTS & CRAFTS TRAIL
ARTISTS & MAKERS POP-UP SHOP, Mill on the Fleet Visitor Centre, 65 High Street, Gatehouse of Fleet, DG7 2HS, 01556 814 099
 Stocked and staffed by local professional designer makers
JOSHUA MILES ART STUDIO, 57 Castle Street, DG6 4JL
 Art studio open to the public
enquiry@cornerwaysart.co.uk/studio
 Miniature paintings & larger works in oil, pastel & watercolour
LANE 2 Gibson
KIRKCUDBRIGHT ARTS & CRAFTS TRAIL
ARTISTS & MAKERS POP-UP SHOP, Mill on the Fleet Visitor Centre, 65 High Street, Gatehouse of Fleet, DG7 2HS, 01556 814 099
 Stocked and staffed by local professional designer makers
JOSHUA MILES ART STUDIO, 57 Castle Street, DG6 4JL
 Art studio open to the public
enquiry@cornerwaysart.co.uk/studio
 Miniature paintings & larger works in oil, pastel & watercolour
LANE 2 Gibson

The

ARG, 0207 887 8888
Ongoing
 Free Collection Displays. Walk through time and explore artworks from 1545 to the present day
May 19 - October 16
 Cornelia Parker. Cornelia Parker.
BANKSIDE GALLERY, 48 Hopson Street, (Next to Tate Modern), SE1 1NH, 0207 928 7521
 Until May 8
 Edward Hutchinson. Invisible Landscapes. Draws our attention to the need to recognise the hidden energies and powers in landscape
NATIONAL PORTRAIT GALLERY, St Martin's Place, WC2H 0HE, 0207 306 0955
 Until May 30
 Creative Connections Coventry. Celebrates Coventry and the people that call it home
HAYWARD GALLERY, South Bank Centre, Belvedere Road, SE1 8XX, 08703 800 400 05/05/2022
 Louise Bourgeois and Mike Kelly. Still and Strange Sculpture.
Until May 4
 Rubrena Aurangzeb-Tariq. British Sign Language Tour of Louise Bourgeois. Discussing the ideas & techniques behind the artworks
Until May 14
 Louise Bourgeois. The Woven Child. A major retrospective of the legendary artist's 1960s late-career fascination with fabric and architecture
Until May 15
 Indian Sun. Highlights from the Ravi Shankar Archive. Explore the life and legacy of a global musical icon through the lens of family archives
MALL GALLERIES, The Mall, near Trafalgar Square, SW1Y 5AH, 0207 930 6844, www.mallgalleries.org.uk, info@mallgalleries.org.uk
May 5 - 14
 Royal Society of Portrait Painters. 15th Exhibition 2022
May 17 - 21
 The Society of Graphic Fine Art. 101st Annual Open Exhibition
June 7 - 11
 Hannah Shergold. The Sovereign Collection
GREEN & STONE OF CHELSEA, 251-253 Fulham Road, SW3 6JY, 0207 352 8837, www.greenandstone.com, mail@greenandstone.com
May 9 - 15
 Alex Fowler. Alex Fowler.
May 16 - 21
 Ann Gardner and Lisa Micklewright. Ann Gardner and Lisa Micklewright
May 23 - 28
 Vicky Poklewski-Kozielec. Vicky Poklewski-Kozielec
IMPERIAL WAR MUSEUM, Lambeth Road, SE1 6HZ, 0207 416 5320
May 28 - June 5
 Story Seekers. Chocolate Edition.
Until June 14
 Paul RG Haley. Falklands Conflict
THE QUEEN'S GALLERY, Buckingham Palace, SW1A 1AA, 0207 780 7801
THE ROYAL ACADEMY OF ARTS, Burlington House, Piccadilly, W1J 0BD, 0207 300 8000
Until May 22
 Joanna Hillerman. Whistler's 19th Women in White Works
Until June 19
 Kawanabe Kyūzō. The Israel Goldman Collection
GUILDHALL ART GALLERY & ROMAN LONDON'S AMPHITHEATRE, Guildhall Yard, Off Gresham Street, EC2V 5AE, 0207 332 3700
May 6 - 28
 Lumini Glass Group. Barbican Revisited.
Until September 11
 Inspire! Art. Inspired by literature, theatre, and music
Until October 26
 Magnificent Maps of London.
MUSEUM OF LONDON, 50 Museum Wall, EC2Y 5SH, 0207 101 9844
May 7 - 31
 Great Fire of London family walk
DUNWICH PICTURE GALLERY, Galfrey Road, Dulwich Village, SE21 7AD, 0208 693 5254
May 4 - September 4
 Reframed: The Woman in the Window
GREENWICH PRINTMAKERS GALLERY, 1a The Market, Greenwich, SE10 9HZ, 0208 858 1569
 Original Artist Prints at affordable prices
CONTEMPORARY SCULPTURE GALLERIES, 108 Old Brompton road, SW7 3RA, 0207 374 8615
 Art & Architecture
 At Royal British Society of Sculptors
VICTORIA AND ALBERT MUSEUM, Cromwell Road, SW7 2BR, 0207 942 2000
 Until November 6
 Maurice Bridgford. Industrial

Sublime Photographs
CONTEMPORARY APPLIED ARTS, 2 Percy Street, W1T 1DD, 0207 436 2434
May 9 - 15
 London Craft Week
OPERA GALLERY, 134 New Bond Street, W1S 2TF, 0207 491 2999
LA GALLERIA PALL MALL, Unit 30, Royal Opera Arcade, SW1Y 4JY, 0207 930 8069
JACKSONS ART SUPPLIES LTD, 1 Farleigh Place, N16 7SX, 0844 499 8430, www.jacksonsart.com, sales@jacksonsart.co.uk
SAATCHI GALLERY, Duke Of York's HQ, King's Road, SW3 4RY, 020 7811 3081
June 10 - August 19
 Tiffany & Co. Vision & Virtuosity
ALEXANDRA PALACE, Alexandra Palace Way, N22 7AY, 0208 365 2121
 The People's palace. A centre of music, sport and events for over 130 years
May 14
 The Pangolin Project
DESIGN MUSEUM, 28 Shad Thames, SE1 2YD, 020 7403 6933
Until June 26
 Design Ventura. Discover the shortlisted product ideas created by students aged 13-16
September 4
 Bethany Williams. Alternative Stories. Celebrate the work of designer Bethany Williams
HALCYON GALLERY, 144-146 New Bond Street, W1S 2PF, 0207 100 7144
Until May 31
 Michal Grynberg. IMMORTAL
ESPACIO GALLERY, 159 Bedford Green Road, E2 7DG
May 19 - 28
 Kai Lab. PHASES
PIANO NOBILE, 129 Portland Road, Holland Park, W11 4LW, 020 7229 1199
Until June 19
 William Crozier. Nature into Abstraction
HORNSEA TOWN HALL ARTS CENTRE, The Broadway, Crouch End, N8 9JJ
Manchester
THE WHITWORTH ART GALLERY, The University of Manchester, Oxford Road, M15 6ER, 0161 275 7451
Until September 4
 Still Parents - Life after Baby Loss. Artworks and objects
LOWRY ARTS & DIGITAL WORLD CENTRE, Pier 8, Salford Quays, Salford, M5 2AZ, 0161 876 2000
MANCHESTER ART GALLERY, 128 Victoria Street, M2 3JL, 0161 235 8888
Until June 25
 Jude Montaner. Constellations: Care & Resistance
CENTRE FOR CHINESE CONTEMPORARY ART, Market Buildings, Thomas Street, Northern Quarter, M4 1EU, 0161 832 7271
 Call for details
Moray
MORAY ART CENTRE, The Park, Findhorn, IV36 3TA, 01309 692 426
THE GALLERY, Elgin Library, Cooper Park, Elgin, IV30 1HS, 01345 562 600
 Exhibitions by local artists and craftspeople
LEAP STUDIO & GALLERY, 17 Victoria Street, Craigiehallie, Aberdeen-on-Spey, AB38 9SR, 01340 881226
 Unique display of whisky related art
LOGE STEADING ART GALLERY, Logie, Dunphail, Forres, IV36 2QN, 01309 611 378
 Shows of contemporary art in the gallery by local artists. Six miles south of Forres on the A540
A'ANSIDE, Main Street, Tomintoul, AB37 9EX, 01479 872 074
 Scottish Art, ceramics and sculpture - craftsmanship at its best - etchings, pottery, sporting prints
MORAY COLLEGE UHI, Moray Street, Elgin, IV30 1JJ, 01343 576 413, www.moray.ac.uk
FALCONER MUSEUM, Tolbooth Street, Forres, IV36 1PH, 01309 673 701
THE BOOKMARK, 34 High Street, Grantown-on-Spey, PH12 3EH, 01479 873433
Morayshire
THE HIGH ST MERCHANTS, 74 High Street, Grantown-on-Spey, PH12 3EL, 01479 872246, www.thehighstmerchants.com, thehighstmerchants@gmail.com
 Cafe - Treacher - Bar. Beautiful selection of Fine Art, crafts & Photography, home baking, coffee, lunch & evening meals Friday & Saturday

ArtWork

THE VELVET EASEL GALLERY

SPRING EXHIBITION

298 Portobello High St
 Portobello
 Edinburgh
 EH15 2AS

07835 813689
 velvet easel.co.uk
 art@velvet easel.co.uk

@thevelvet easel

Artwork by Ian Nell

OWN ART

Gallery Q Dundee

www.galleryq.co.uk

RELATIVE SPACE

101st Annual Open Exhibition
 June 7 - 11
 Hannah Shergold. The Sovereign Collection

Manchester

**Gwen Adair, Andrew Adair
 Catriona Campbell
 30 April to 28 May**

Drawn Threads
 An exhibition of Scottish artists using textiles and embroidery
 4 June to 2 July 2022

The Galloway Hoard

VIKING-AGE TREASURE

9 October 2021 - 10 July 2022
 Admission free

Kirkcudbright Galleries

A National Museums Scotland touring Exhibition

National Museums Scotland
 Scottish Government
 Dumfries & Galloway

HENDERSON ARTSHOP

FRAMING
 PRINTS
 MATERIALS

28A RAEBURN PLACE
 STOCKBRIDGE
 0131 332 7800

INFO@HENDERSONARTSHOP.COM
 HENDERSONARTSHOP.COM

1896 GALLERY

Scottish landscape art exhibition

Featuring
 Kevin Fleming

Also introducing
 Fiona Matheson

Open Wednesday - Saturday 10 - 5pm
 Boat of Garten

See our artwork at 1896gallery.com/artists
 01479831111

The Galloway Hoard

VIKING-AGE TREASURE

9 October 2021 - 10 July 2022
 Admission free

Kirkcudbright Galleries

A National Museums Scotland touring Exhibition

National Museums Scotland
 Scottish Government
 Dumfries & Galloway

Guide

Nairn
NAINR BOOK AND ARTS FESTIVAL, 53 King Street, IV12 4JN, 01467 451 804, www.nairnfestival.co.uk, enquiries@nairnfestival.co.uk
August 27 - September 4
 Nairn Book and Arts Festival 2022. Programme launches on 24th June
BOATH HOUSE, Auldearn, IV12 5TE, 01667 454 896
 Changing exhibitions by Scots contemporary artists
CAWDOR CASTLE, Cawdor, IV12 5RD, 01667 404 401
THE COURT HOUSE, THE SEAMAN'S HALL, IV12 4AU, 01667 488510
GREENTREE ARTS STUDIO, The School House, Ferness, Nairnshire, IV12 5UP, 01309 651 319
 Offers a selection of original art, predominantly from local artists
TWEEDDALE MUSEUM AND GALLERY, Chambers Institution, High Street, EH45 8AG, 01721 724 123, www.tweeddalemuseum.org.uk
 Innovative textile art by former Royal ballerina

Peebles
TWEED ART, 1 Biggiesknowe, EH45 8HS, 01721 720 246, www.tweedart.co.uk, info@tweedart.co.uk
 Framing studio artists and craft-makers gallery
Ongoing
 Various artists. Artists Gallery. Features a selection of original art, predominantly from local artists
TWEEDDALE MUSEUM AND GALLERY, Chambers Institution, High Street, EH45 8AG, 01721 724 123, www.tweeddalemuseum.org.uk
 Innovative textile art by former Royal ballerina

Northumberland
MARY ANN ROGERS, West Woodburn, Hexham, NE48 2SE, 01434 270 216, www.marogers.com, info@marogers.com
 Vibrant wildlife and landscape painting, prints, cards and luxury gifts. Advised to ring in advance to ensure having the place to yourself. Covid measures in place
Prudhoe Mon, Tue, Thu, Fri 10am-12.30pm, also Sunday 2-5pm
 Watercolour paintings
June 20 - July 10 (Preview: June 18-19)
 Mary Ann Rogers. True Colours. New paintings
QUEEN'S HALL, Beaumont Street, Hexham, NE46 3LS, 01434 652 477
 Visit website for full programme
SARAH RISEBOROUGH, 21 The Gables, West Street, Bedford, NE70 7QB, 01668 213618
SHIRE POTTERY, Miller's Yard, Prudhoe Street, Alnwick, NE66 1UW, 01665 602 277
WESTSIDE CONTEMPORARY FINE ART, Westside Farm, Newton, Stockfield, NE43 7TW, 01661 843 778

Orkney
WATERFRONT GALLERY, 128 Victoria Street, Stromness, KW16 3BU, 01856 850 644, www.waterfrontgallery.co.uk
 In the shop. Orkney silver, pottery, knitwear and gifts. In the Back Room Local paintings, prints and designer crafts
PIER ARTS CENTRE, Victoria Street, Stromness, KW16 3AA, 01856 850 209
Until June 4
 Alan Johnston. Beyond The Flow. Pushing paper, contemporary drawing from 1970 to now
THE GALLERY, Pierwall, Westray, KW17 2BZ, 01857 677 770
 Ongoing. Contemporary art of Westray
YELLOWBIRD GALLERY, Chocolate Cottage, Birsay, KW17 2LJ, 01856 721 360
 Celebration of birds through drawings, paintings and carving by sculptor John Thompson and artist Lesley Murdoch
SHORELINES GALLERY & STUDIO, Maidland Place, Finstown, Orkney Isles, KW17 2EQ, 01856 761142
 Original gallery & shop selling prints & watercolours by Orkney artists Jane Glue
THE LOFT GALLERY, 21 Margarets Hope, KW17 2SL
NORLIGHT GALLERY, Graham Place, Stromness, KW16 3BY, 01856 851 194
 Non-profit white wall exhibition space with a sink, sofa bed, shower and cooking facilities available for self-funded Artist Residencies
BILL MCARTHUR SEASCAPE ART, 3 Lettan, Sanday, KW17 2BP

Oxford
MODERN ART OXFORD, 30 Pembroke Street, OX1 1BP, 01865 722 733
ASHMOLEAN MUSEUM, Beaumont Street, OX1 2PH, 01865 278 000
PAISLEY MUSEUM & ART GALLERIES, 60 High Street, Town Centre, PA1 2BA, 0141 889 3151, www.renfrewshiresciresure.com/paisleymuseum/art-galleries-

fee, lunch & evening meals Friday & Saturday
 Check website for more details
PAISLEY ART CENTRE, New Street, PA1 1EZ, 0141 887 1010
 Regular performances and events, call for listings
PAISLEY ART INSTITUTE, c/o Unit 33, Sir James Clark Building, Abbeymill Business Centre, Seedhill, PA1 1TJ, www.paisleyartinstitute.com, secretary@paisleyartinstitute.com
 Holds its Annual Exhibition which attracts work from artist members and open entrants across the length and breadth of the UK
PAISLEY ART CENTRE, New Street, PA1 1EZ, 0141 887 1010
 Regular performances and events, call for listings
PAISLEY ART INSTITUTE, c/o Unit 33, Sir James Clark Building, Abbeymill Business Centre, Seedhill, PA1 1TJ, www.paisleyartinstitute.com, secretary@paisleyartinstitute.com
 Holds its Annual Exhibition which attracts work from artist members and open entrants across the length and breadth of the UK
PAISLEY ART CENTRE, New Street, PA1 1EZ, 0141 887 1010
 Regular performances and events, call for listings
PAISLEY ART INSTITUTE, c/o Unit 33, Sir James Clark Building, Abbeymill Business Centre, Seedhill, PA1 1TJ, www.paisleyartinstitute.com, secretary@paisleyartinstitute.com
 Holds its Annual Exhibition which attracts work from artist members and open entrants across the length and breadth of the UK

Market place, TD4 4BL, www.burnsidegallery.co.uk
Until June
PERTH THEATRE, 185 High Street, PH1 5JZ, 01738 621 031, www.horsecross.co.uk, info@horsecross.co.uk
 Call for full listings
PERTH CONCERT HALL, Mill Street, PH1 5JZ, 01738 621 031, www.horsecross.co.uk, info@horsecross.co.uk
THE PERTHSHIRE ART ASSOCIATION, 5 Westhill, PH1 1DH, 01738 626307
Shetland
SHETLAND MUSEUM, Hay's Dock, Lerwick, ZE1 0WP, 01595 695 057
 Da Gadderie - new exhibition space in the new Shetland Museum
THE TAIT GALLERY, He Union Street, Lerwick, ZE1 0ET, 01595 690 143
 Jim Tait. Marine and landscape artist
BONHOGA GALLERY, Weisdale Mill, Weisdale, ZE2 9LW, 01595 830 400
VALLA FINE ART, 61 Commercial Street, Lerwick, ZE1 0US, 01595 693734
THE PICKING SHED, Lower Voe, Ze2 9PX, www.pickingshed.co.uk, ckr@krsht.plus.com
 Ongoing
 Accommodation with Work Room. The cottage is available all year
YOUNGER HALL, University of St Andrews, Music Centre, North Street, KY16 9AJ, 01334 462226
FRASER GALLERY, 53 South Street, KY16 9QR, 01334 479 647
ST ANDREWS MUSEUM GARDENS, Kirkcubright Park, Doubledikes Road, KY16 9DP, 01334 659380
J & G INNES LTD, 107 South Street, KY16 9QW, 01334 472 174, www.jg-innes.co.uk, enquiries@jg-innes.co.uk
 Stationery, Art Supplies, Books & Gifts
THE JUNIOR GALLERY, 07986 839 357, www.juniorgallery.scot
 Bashabi Fraser and Michael Longley. Poetry Readings.
May 27 - June 9
 Vibha Pankaj and Sarah Longley. New works

St Andrews
FIFE CONTEMPORARY ART AND CRAFT (FCA&C), Town Hall, Queen's Gardens, KY16 9AD, 01334 474 610
YOUNGER HALL, University of St Andrews, Music Centre, North Street, KY16 9AJ, 01334 462226
FRASER GALLERY, 53 South Street, KY16 9QR, 01334 479 647
ST ANDREWS MUSEUM GARDENS, Kirkcubright Park, Doubledikes Road, KY16 9DP, 01334 659380
J & G INNES LTD, 107 South Street, KY16 9QW, 01334 472 174, www.jg-innes.co.uk, enquiries@jg-innes.co.uk
 Stationery, Art Supplies, Books & Gifts
THE JUNIOR GALLERY, 07986 839 357, www.juniorgallery.scot
 Bashabi Fraser and Michael Longley. Poetry Readings.
May 27 - June 9
 Vibha Pankaj and Sarah Longley. New works

Pitlochry
PITLOCHRY FESTIVAL THEATRE, Port-Na-Craig, PH16 5RD, 01796 484 626
May 20 - October 1
 Sunshine On Earth
JOHN MUIR TRUST - WILD SPACE, Tower House, Station Road, PH16 5AN, 01796 484975
Renfrewshire
CRAFTS OF CALDER GALLERY AND FRAMING, 8 High Street, Lochwinnoch, PA12 4DA, 01505 841 980
KILBARNEAN EAST CHURCH HALL, Off Steeple Square, Kilbarnean, PA10 2JW, www.kilbarneaneastchurch.btck.co.uk
Until June 27
 Outside In. Collaboration between Perth College UHI and Culture Perth and Kinross
Until October 31
 Celtic Ball. Photography, costume designs, artworks, music and archival material related to the company
 Various artists. 30 Years of The Fergusson Gallery
FRAMES GALLERY, 10 Victoria Street, PH2 8LW, 01738 631 085, www.framesgallery.co.uk, info@framesgallery.co.uk
May 7 - June 4
 Jan Radnan. Jan Radnan Solo Exhibition 2022. Oil paintings
THE BARN GALLERY, The Bield, Blackruthven, Tibbermore, PH1 1PY, 01968 677854, www.bieldatblackruthven.org.uk, info@bieldatblackruthven.org.uk
 Check website for more information
Until May 20
 Various artists. Stations of the Cross. Jane Glue
PERTHSHIRE AGRICULTURAL SOCIETY, 26 York Place, PH2 8EH, 01738 623 780, www.perthshiresoc.co.uk, secretary@perthshiresoc.co.uk
August 5 & 6
Perth Show 2022
BOO VAKE (BUTH BIEAG), 5 Watergate, PH1 5TF, 01738 442363, www.boovake.co.uk, mail@boovake.co.uk
 Original gifts from artists, makers & designers from Scotland and the UK
FERGUSON GALLERY, Marshall Place, PH2 8NS, 01738 783 425
L CHRISTIE CAMPBELL FINE ART, 781, 01821 670 379
 Ongoing exhibition of 19th-21st century oils, watercolours, etchings and prints, jewellery by Chris Lewis and Assasin
THE RUTHVEN GALLERY, 90 High Street, Auchterarder, PH13 1BJ, 01764 664 233
 Contemporary Art and Framing
JARDINE GALLERY & WORK-

Northumberland
MARY ANN ROGERS, West Woodburn, Hexham, NE48 2SE, 01434 270 216, www.marogers.com, info@marogers.com
 Vibrant wildlife and landscape painting, prints, cards and luxury gifts. Advised to ring in advance to ensure having the place to yourself. Covid measures in place
Prudhoe Mon, Tue, Thu, Fri 10am-12.30pm, also Sunday 2-5pm
 Watercolour paintings
June 20 - July 10 (Preview: June 18-19)
 Mary Ann Rogers. True Colours. New paintings
QUEEN'S HALL, Beaumont Street, Hexham, NE46 3LS, 01434 652 477
 Visit website for full programme
SARAH RISEBOROUGH, 21 The Gables, West Street, Bedford, NE70 7QB, 01668 213618
SHIRE POTTERY, Miller's Yard, Prudhoe Street, Alnwick, NE66 1UW, 01665 602 277
WESTSIDE CONTEMPORARY FINE ART, Westside Farm, Newton, Stockfield, NE43 7TW, 01661 843 778

Orkney
WATERFRONT GALLERY, 128 Victoria Street, Stromness, KW16 3BU, 01856 850 644, www.waterfrontgallery.co.uk
 In the shop. Orkney silver, pottery, knitwear and gifts. In the Back Room Local paintings, prints and designer crafts
PIER ARTS CENTRE, Victoria Street, Stromness, KW16 3AA, 01856 850 209
Until June 4
 Alan Johnston. Beyond The Flow. Pushing paper, contemporary drawing from 1970 to now
THE GALLERY, Pierwall, Westray, KW17 2BZ, 01857 677 770
 Ongoing. Contemporary art of Westray
YELLOWBIRD GALLERY, Chocolate Cottage, Birsay, KW17 2LJ, 01856 721 360
 Celebration of birds through drawings, paintings and carving by sculptor John Thompson and artist Lesley Murdoch
SHORELINES GALLERY & STUDIO, Maidland Place, Finstown, Orkney Isles, KW17 2EQ, 01856 761142
 Original gallery & shop selling prints & watercolours by Orkney artists Jane Glue
THE LOFT GALLERY, 21 Margarets Hope, KW17 2SL
NORLIGHT GALLERY, Graham Place, Stromness, KW16 3BY, 01856 851 194
 Non-profit white wall exhibition space with a sink, sofa bed, shower and cooking facilities available for self-funded Artist Residencies
BILL MCARTHUR SEASCAPE ART, 3 Lettan, Sanday, KW17 2BP

fee, lunch & evening meals Friday & Saturday
 Check website for more details
PAISLEY ART CENTRE, New Street, PA1 1EZ, 0141 887 1010
 Regular performances and events, call for listings
PAISLEY ART INSTITUTE, c/o Unit 33, Sir James Clark Building, Abbeymill Business Centre, Seedhill, PA1 1TJ, www.paisleyartinstitute.com, secretary@paisleyartinstitute.com
 Holds its Annual Exhibition which attracts work from artist members and open entrants across the length and breadth of the UK
PAISLEY ART CENTRE, New Street, PA1 1EZ, 0141 887 1010
 Regular performances and events, call for listings
PAISLEY ART INSTITUTE, c/o Unit 33, Sir James Clark Building, Abbeymill Business Centre, Seedhill, PA1 1TJ, www.paisleyartinstitute.com, secretary@paisleyartinstitute.com
 Holds its Annual Exhibition which attracts work from artist members and open entrants across the length and breadth of the UK

Visit: www.artwork.co.uk

The

SHOP, 45 New Row, PH1 5QA, 01738 621 836
PERTH THEATRE, 185 High Street, PH1 5JZ, 01738 621 031, www.horsecross.co.uk, info@horsecross.co.uk
 Call for full listings
PERTH CONCERT HALL, Mill Street, PH1 5JZ, 01738 621 031, www.horsecross.co.uk, info@horsecross.co.uk
THE PERTHSHIRE ART ASSOCIATION, 5 Westhill, PH1 1DH, 01738 626307
Shetland
SHETLAND MUSEUM, Hay's Dock, Lerwick, ZE1 0WP, 01595 695 057
 Da Gadderie - new exhibition space in the new Shetland Museum
THE TAIT GALLERY, He Union Street, Lerwick, ZE1 0ET, 01595 690 143
 Jim Tait. Marine and landscape artist
BONHOGA GALLERY, Weisdale Mill, Weisdale, ZE2 9LW, 01595 830 400
VALLA FINE ART, 61 Commercial Street, Lerwick, ZE1 0US, 01595 693734
THE PICKING SHED, Lower Voe, Ze2 9PX, www.pickingshed.co.uk, ckr@krsht.plus.com
 Ongoing
 Accommodation with Work Room. The cottage is available all year
YOUNGER HALL, University of St Andrews, Music Centre, North Street, KY16 9AJ, 01334 462226
FRASER GALLERY, 53 South Street, KY16 9QR, 01334 479 647
ST ANDREWS MUSEUM GARDENS, Kirkcubright Park, Doubledikes Road, KY16 9DP, 01334 659380
J & G INNES LTD, 107 South Street, KY16 9QW, 01334 472 174, www.jg-innes.co.uk, enquiries@jg-innes.co.uk
 Stationery, Art Supplies, Books & Gifts
THE JUNIOR GALLERY, 07986 839 357, www.juniorgallery.scot
 Bashabi Fraser and Michael Longley. Poetry Readings.
May 27 - June 9
 Vibha Pankaj and Sarah Longley. New works

St Andrews
FIFE CONTEMPORARY ART AND CRAFT (FCA&C), Town Hall, Queen's Gardens, KY16 9AD, 01334 474 610
YOUNGER HALL, University of St Andrews, Music Centre, North Street, KY16 9AJ, 01334 462226
FRASER GALLERY, 53 South Street, KY16 9QR, 01334 479 647
ST ANDREWS MUSEUM GARDENS, Kirkcubright Park, Doubledikes Road, KY16 9DP, 01334 659380
J & G INNES LTD, 107 South Street, KY16 9QW, 01334 472 174, www.jg-innes.co.uk, enquiries@jg-innes.co.uk
 Stationery, Art Supplies, Books & Gifts
THE JUNIOR GALLERY, 07986 839 357, www.juniorgallery.scot
 Bashabi Fraser and Michael Longley. Poetry Readings.
May 27 - June 9
 Vibha Pankaj and Sarah Longley. New works

Pitlochry
PITLOCHRY FESTIVAL THEATRE, Port-Na-Craig, PH16 5RD, 01796 484 626
May 20 - October 1
 Sunshine On Earth
JOHN MUIR TRUST - WILD SPACE, Tower House, Station Road, PH16 5AN, 01796 484975
Renfrewshire
CRAFTS OF CALDER GALLERY AND FRAMING, 8 High Street, Lochwinnoch, PA12 4DA, 01505 841 980
KILBARNEAN EAST CHURCH HALL, Off Steeple Square, Kilbarnean, PA10 2JW, www.kilbarneaneastchurch.btck.co.uk
Until June 27
 Outside In. Collaboration between Perth College UHI and Culture Perth and Kinross
Until October 31
 Celtic Ball. Photography, costume designs, artworks, music and archival material related to the company
 Various artists. 30 Years of The Fergusson Gallery
FRAMES GALLERY, 10 Victoria Street, PH2 8LW, 01738 631 085, www.framesgallery.co.uk, info@framesgallery.co.uk
May 7 - June 4
 Jan Radnan. Jan Radnan Solo Exhibition 2022. Oil paintings
THE BARN GALLERY, The Bield, Blackruthven, Tibbermore, PH1 1PY, 01968 677854, www.bieldatblackruthven.org.uk, info@bieldatblackruthven.org.uk
 Check website for more information
Until May 20
 Various artists. Stations of the Cross. Jane Glue
PERTHSHIRE AGRICULTURAL SOCIETY, 26 York Place, PH2 8EH, 01738 623 780, www.perthshiresoc.co.uk, secretary@perthshiresoc.co.uk
August 5 & 6
Perth Show 2022
BOO VAKE (BUTH BIEAG), 5 Watergate, PH1 5TF, 01738 442363, www.boovake.co.uk, mail@boovake.co.uk
 Original gifts from artists, makers & designers from Scotland and the UK
FERGUSON GALLERY, Marshall Place, PH2 8NS, 01738 783 425
L CHRISTIE CAMPBELL FINE ART, 781, 01821 670 379
 Ongoing exhibition of 19th-21st century oils, watercolours, etchings and prints, jewellery by Chris Lewis and Assasin
THE RUTHVEN GALLERY, 90 High Street, Auchterarder, PH13 1BJ, 01764 664 233
 Contemporary Art and Framing
JARDINE GALLERY & WORK-

Northumberland
MARY ANN ROGERS, West Woodburn, Hexham, NE48 2SE, 01434 270 216, www.marogers.com, info@marogers.com
 Vibrant wildlife and landscape painting, prints, cards and luxury gifts. Advised to ring in advance to ensure having the place to yourself. Covid measures in place
Prudhoe Mon, Tue, Thu, Fri 10am-12.30pm, also Sunday 2-5pm
 Watercolour paintings
June 20 - July 10 (Preview: June 18-19)
 Mary Ann Rogers. True Colours. New paintings
QUEEN'S HALL, Beaumont Street, Hexham, NE46 3LS, 01434 652 477
 Visit website for full programme
SARAH RISEBOROUGH, 21 The Gables, West Street, Bedford, NE70 7QB, 01668 213618
SHIRE POTTERY, Miller's Yard, Prudhoe Street, Alnwick, NE66 1UW, 01665 602 277
WESTSIDE CON

ArtWork

Art & Design Fair



Tickets from 3d2d.co.uk/flair £3

June 2nd - 5th 2022

11am - 6pm

Level B3, St James Quarter

A **3D2D** & **SCOTTISH DESIGN EXCHANGE** Event, in partnership with **ST JAMES QUARTER**