

The North's *Original* Free Arts Newspaper + www.artwork.co.uk

artWORK

Number 237 Pick up your own FREE copy and find out what's really happening in the arts July/August 2025



Astrid Trugg: *Table of Contents*, from the Summer Show at Fidra Gallery, Gullane

**INSIDE: Which is REALLY the Artists' Town ::
Report from Mount Stuart**

SUMMER SCHOOL

At Moray Art Centre we offer a variety of courses to choose from between June and August, led by our amazingly talented tutors!

Georgia Rose Murray
Light + Colour - Landscape Painting
June 30 - July 4 at 9:30am - 4:30pm
£425

An immersive and expressive painting week, with an emphasis on colour!

Helen Cole
Interpreting the Landscape
July 7th - 11th at 9:30am - 4:30pm
£425

In this workshop, we will be taking inspiration from 3 great British artists and their approach to the landscape.

Celia Forestal Smith
Find Your Freedom in Abstraction
July 14 - July 18 at 9:30am - 4:30pm
£425

In this course we will learn about creating interesting and dynamic abstract visual elements.



Jonathan Shearer
Exploring Painting and Drawing Outdoors
July 21st - July 25th at 9:30am - 4:30pm
£425

Join Jonathan and learn how to sketch, draw and paint on location in the stunning Moray landscape!



Allan Davies
Oil Portraits Unleashed: Master the Art
July 28th - August 1st at 9:30am - 4:30pm
£450

This class focuses on portrait painting using a live model!



Ginny Elston
Stilled lives, stirring colour: Fundamental painting skills in colour
August 4th - August 8th at 9:30am - 4:30pm
£425

A week for deepening and reinvigorating essential painting skills through transformative still life study.



Kenneth Le Riche
Large Portrait in Oils - Observation and Expression
August 11th - August 15th at 9:30am - 4:30pm
£450

This course will take students on a journey into colour while painting the head from life, exploring portraiture and painting with oils!



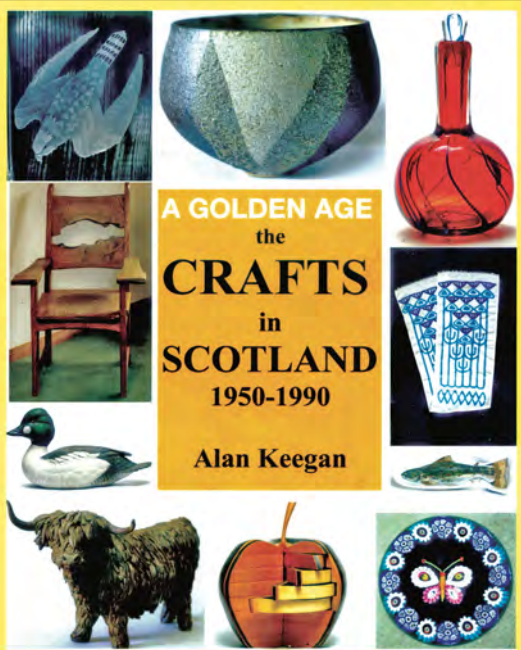
Susie Wilson
Re-imagining the Artist Book
August 25th - August 29th at 9:30am - 4:30pm
£425

Over the week students will look at ways to create an artist book inspired by found objects.



Jill Welham
Cyanotypes
August 18th - August 20th at 9:30am - 4:30pm
£250

This is a fun three day workshop where you will learn the art of cyanotype photographs!



SPECIAL OFFER TO artWORK READERS
The Crafts in Scotland 1950-1990

Sent post free* at half published price!
(* inland post only)

Hard back £35 - 50% = £17.50 :: Soft covers: £25 - 50% = £12.50
Go to www.northernbooks.co.uk and quote AW231

Or, send cheque to Famedram PO Box 3 Ellon AB41 9EA
Please send ___ copies Hardback :: Or ___ copies Soft Cover to:-

Follow us on:

www.morayartcentre.org
 admin@morayartcentre.org
 01309 692426
 Moray Art Centre, The Park, Findhorn, IV36 3TA



artWORK

£18.00 (6 issues) ☐ £28.00 (12 issues) ☐

NAME

ADDRESS

POSTCODE

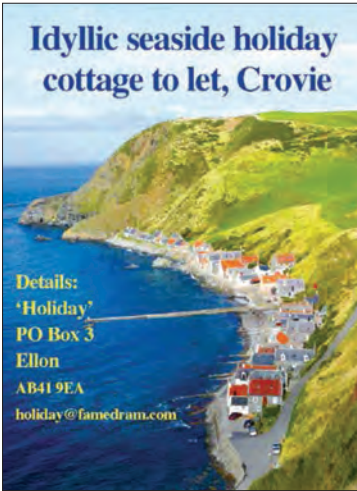
PLEASE SEND ME REGULAR COPIES OF

artWORK

to this address:

Send (with cheque/PO/postage stamps)

to: Famedram Publishers Ltd., PO Box 3, Ellon AB41 9EA, Scotland



artWORK 2025

Tessa Williams

THE SCENTS WE MISSED FROM LOCKDOWN



New Eau de Parfum

The Scents we Missed from Lockdown New Range from Tessa Williams X4160 Tuesdays

20% off with code ARTWORK20

WWW.TESSAWILLIAMS.CO.UK

The

Aberdeen

ABERDEEN ART GALLERY, Schoolhill, AB10 1FQ, 01224 523 700
Until October 26
Monsters on the Deep. Legend, folklore and modern-day science

ABERDEEN MARITIME MUSEUM, Shiprow, AB11 5BY, 01224 337700
Until July 30 2028
Colin Helling. Aberdeen Ships, Trade and Empire. Role of ships, owned and built in Aberdeen, in Empire and colonialism

GALLERY HEINZEL, 1 Chaffan Place, AB10 6RB, 01224 625 629, www.galleryheinzel.com, info@galleryheinzel.com
Contemporary Scottish art
Until August 16
Summer Exhibition - Continuum. Celebrate the richness and diversity of Contemporary Scottish Art

GRAY'S SCHOOL OF ART, Robert Gordon University, Garthdee Road, AB10 7QD, www.rgu.ac.uk/areas-of-study/subjects/art-and-design

ARTS CENTRE & THEATRE (ACT) ABERDEEN, 33 King Street, AB24 5AA, 01224 635 208
Until July 31
NESCol Tall Ships Photography Exhibition. Photograph and art

THE ART GALLERY, Grampian Hospitals Art Trust, Aberdeen Royal Infirmary, Foresterhill, AB25 2ZN, 01224 552 429

ROSIES, 45-49 Holburn Street, AB10 6BR, 01224 577 325
Crafts, art and gifts also framing

PEACOCK VISUAL ARTS, 21 Castle Street, AB11 5BQ, 01224 639 539
July 19 - August 30
Edward Smith, Ian Hamilton Finlay, Joyce Cairns, Adam Bridgland, Richard DeMarco, Frances Walker, Andrew Cranston and more. Small Ships. Comprises 30 model boats, accompanied by nautical themed works

PROVOST SKENE'S HOUSE, Guestrow, (between Broad Street and Flourmill Lane), AB10 1AS, 01224 641 086

TOLBOOTH MUSEUM, Castle Street, AB10 1EX, 01224 621 167

CLAREMONT STUDIO, 66 Claremont Street, AB10 6QY, 01224 596 999

NICOLE PORTER GALLERY, 88 King Street, AB24 5BA, 01224 566 477

NORTHERN ARTS CLUB, 8, Bon Accord Square, AB11 6DJ, www.northernartsclub.co.uk, northernartsclub8@gmail.com

THE FOYER GALLERY, The Phoenix Centre, Newton Dee Village, Bieldside, AB15 9DX

Aberdeenshire

BRAEMAR GALLERY, Mar Road, Braemar, AB35 5YL, 01339 741 681, www.braemargallery.co.uk, info@braemargallery.co.uk
Oil paintings, watercolours, etchings, engravings, sculpture, jewellery and cards

LARKS GALLERY, 10 Braemar Road, Ballater, AB35 5RL, 01339 755 888, www.larksgallery.com
Paintings, sculpture, ceramics, glass, textiles, jewellery and photography
July
Ken MacLennan.

TOLQUHON GALLERY, Tolquhon, Tarves, Ellon, AB41 7LP, 01651 842 343, www.tolquhon-gallery.co.uk

NORTH EAST OPEN STUDIOS, www.northeastopenstudios.co.uk, info@northeastopenstudios.co.uk
A non-profit organisation promoting Arts, Crafts and galleries in the North East of Scotland
September 13 - 21
Welcome to North East Open Studios. Artists and makers showcasing a diverse range of artworks from paintings and ceramics to jewellery, glass, textiles, wood, sculpture and more

ALBERTINO COSTA SCULPTURES, 5 Milltimber Brae East, Milltimber, AB13 0DN, 07917 482 351, www.costasculptures.co.uk, costasculptures@gmail.com

BALLATER GALLERY, 46 Bridge Street, Ballater, AB35 5QD, 01339 755444, www.ballatergallery.co.uk, info@ballatergallery.co.uk

EION STEWART FINE ART, 55 Allardice Street, Stonehaven, AB39 2AB, 01569 785606, www.eionstewartfineart.com, art@eionstewartfineart.com
Picture framing specialists and one of the main suppliers to top artists,

photographers and businesses

Summer Exhibition
Victoria Broxton, Stuart Buchanan, Jenny Colbeck, Andrew Gold, Moira Huntly, Gundra Nock, Ian Shields, Kanita Sim and Morag Stevenson. In The Light.

Ongoing
Dancing Into the Breeze.

Ongoing
Reflections.

COUNTRY FRAMES GALLERY, Leslie, Inch, AB52 6PA, 01464 820389, www.countryframes.co.uk, countryframes@btconnect.com

GARIOCH HERITAGE CENTRE, Loco Works Road, Inverurie, AB51 4FY, 01467 621855, www.gariochheritage.co.uk/, info@gariochheritage.co.uk
September 6 & 7

Inverurie Antiques, Collectors and Upcycling Fair. Welcome Andy's Timeless Treasures and other local antique, collectable, and up cycling traders

JOYCE TAYLOR STUDIO, Braeside Croft, Hythie, Mintlaw, Peterhead, AB42 4HH, 01779 622989, www.joycetaylor.co.uk, info@joycetaylor.co.uk

LANG BYRE GALLERY, Woodend Barn Arts Centre, Burn O'Bennie, Banchory, AB31 5QA, 01330 825 431

MILTON ART GALLERY, Milton of Crathes, Nr Banchory, AB31 5QH, 01330 844 664, www.miltonart.com
Until September 7
Summer Exhibition 2025.

STARFISH STUDIO, 3 Anchor Lane, Johnshaven, DD10 0EN, 01561 360 118

THE BARN, Burn O'Bennie, Banchory, AB31 5QA, 01330 826520, www.thebarnarts.co.uk, mail@thebarnarts.co.uk

GALLERY1, 2B Garioch Shopping Centre, Constitution Street, Inverurie, AB51 4UY

HADDO ARTS, Haddo House, Methlick, Ellon, AB41 7LD, www.haddoarts.com

ARTABOYNE, Victory Hall, Aboyne, AB34
July 19 - August 9
Royal Deeside's Annual Art exhibition. Featuring artists from across the North East of Scotland

Aberfeldy

ABERFELDY GALLERY, 9 Kenmore Street, PH15 2BL, 01887 829 129, www.aberfeldygallery.co.uk
Year-round
Mixed exhibition. Works by our gallery artists
Until September 13
Summer Exhibition. A mixed exhibition by gallery artists

WATERMILL GALLERY, Mill Street, PH15 2BG, 01887 822 896, www.aberfeldywatermill.com, info@aberfeldywatermill.com
Art Gallery, Bookshop, Coffee & Music Shop

ARTISANAND, 13-15 Bank St, PH15 2BB, 01887 822 700, www.artisanand.co.uk
A contemporary gallery showcasing local scottish arts and crafts
July 26 - September 2
Highland Heart.

September 6 - October 14
Creative Courage.

Aberlour

THE ARTIST STUDIO, 126 High Street, AB38 9NX, 01340 881 880

THE GALLERY IN ABERLOUR & SPEY SPORT, Galleryia Scotland, 79 High Street, Speyside, AB38 9QB, 01340 871 457, www.thegalleryinaberlour.com/, kerry-stewart122@icloud.com
Picture framing, paintings and pictures. Home interiors, handcrafted gifts

Alloa

THE GALLERY, Gordon McFarlane, Watchmaker, 41 Mill Street, FK10 1DW, 01259 723 303
Work from Ochil Craft Association

Angus

FORFAR MEFFAN MUSEUM AND ART GALLERY, 20 West High Street, Forfar, DD8 1BB, 01307 476 482, www.angusalive.scot/museums-galleries/visit-a-museum-gallery/meffan-museum-and-art-gallery, ForfarMuseum@angusalive.scot
Until October 6
Tangled Threads. Spinning, weaving, and textile production

Something in the East Anglian air?

CLEARLY there's something anarchic in the artistic, and educational air of East Anglia that attracts a defiant independence of spirit and a tolerance, indifference even, to difference. I state my case, M'lud, but will it stand up in Court? Where's the evidence?

Exhibit A: Summerhill School, Leiston.

Exhibit B: Benton End and the East Anglian School of Painting and Drawing. Exhibit C: The art of Mary Newcomb. The Judge looks nonplussed. "Pray, Sir, Explain."

A. Summerhill, founded by A S Neill in 1921, promoted "Freedom, not Licence" as the basis of a democratic education to enable "the child to live his own life, not one his parents think he should live, nor of an educator who thinks he knows best." Considered by the authorities with suspicion, not least because its first art teacher, Paxton Chadwick, was a communist.

B. Thirty five miles south-west is Benton End, where Cedric Morris and partner Arthur Lett-Haines set up their art school in 1939. At a time when homosexual behaviour was still illegal, locals accepted their predilections, just as Aldeburgh embraced Benjamin Britten and Peter Pears. Morris and Lett-Haines offered a supportive structure but no formal syllabus or dogma. Instead, good example, community, an informal garden, home-grown food, drink, partying and conversation!

C. Four miles away, deep in Constable country, Flatford Mill was a Field Studies Council centre, established 1943, run by a certain Dr Eric Ennion. Mary Newcomb (1922-2008), naturalist, science teacher, artist, spent several summers there. Ennion taught her how to observe and record creatures, especially birds in flight, and at speed, to capture the moment. The Judge's

verdict? "In East Anglia, live well, and let others do likewise. Case closed."

Back to Benton End and the paintings of Sir Cedric Morris (1889 -1982). High profile still, with a major show recently at Philip Mould's in London. Now the Granary Gallery in Berwick-upon-Tweed is showing "Cedric Morris, Artist, Plantsman and Traveller".

Curated by Maltings Head of Visual Art James Lowther, it's the first major exhibition of Morris's work in the north. The excellent catalogue tells his story as artist, teacher, gardener, pioneer ecologist, traveller, and part of a clandestine gay world.

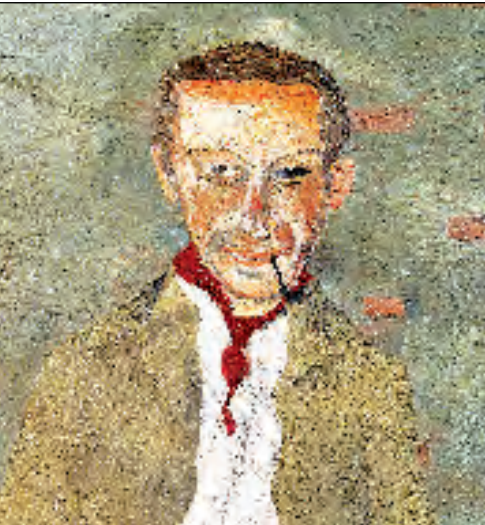
It's quite some achievement to paint the delicacy and detail of his beloved bearded irises in oils, as in "Iris Seedlings" (1943). Clearly Morris was highly skilled as brushman and plantsman both. Sometimes, though, it feels as if he's trying too hard, as in the highly worked, laboured brushstrokes of the flowers in "Helen's Pot" (1936). In your face, crowded, its intense sculptural quality is overwhelming.

And foreign parts? "A Village near Izmir, Turkey" (1971) is strangely lacklustre and flat, the blocky houses in the foreground pushing the eye away rather leading it in. More effective is "Landscape, St Helena" (1965), a valley of lush greens, yellows and tropical luxuriance; you can feel the heat!

Meantime, students at Benton End, including Lucian Freud and, later, Maggi Hambling, basked in experimentation rather than instruction, free to explore their artistic and personal predilections. Hambling thanked Lett-Haines for saying "You've got to make your work your best friend that you can go to whatever you're feeling." Good advice. Both Freud and Hambling went on to considerable recognition, courting controversy in their life and art. Risky though, if it's the person, rather than the art, that attracts more attention.

It's clear that Morris loved the birds that were drawn into his delightfully chaotic and unmanaged garden. However in both "Benton Blue Tit" (1965) and the semi-allegorical "Crisis", (1938), a commentary on the state of a world on the brink of war, they have a somewhat rigid, two dimensional quality. Could they fly?

So very different from Mary Newcomb,



J. Cedric Morris by Lucien Freud (1941)

Norfolk farmer's wife, whose birds whizz through the air in "A Flock of Goldfinches Dispersing" (1993-5). Blink and you'll miss 'em! Ephemeral, poetic, light, humorous, quirky, fleeting, some dismiss her work as mere visual aides-memoire, jottings and jabbings. I disagree. Her scientific training gave her an incisive, forensic focus on the life and essence of her subjects at a unique, unrepeatable moment in time, be it the way wings beat, a Suffolk sheep looks, or how a cyclist cuts through the fields.

She loved to work on the move, on buses and trains, seeing humanity as funny and ridiculous, but also endearing and delightful. Like Morris, she loved flowers, but they can come with enigmatic baggage like "Lady with a bunch of Sweet Williams" (1988). It takes a while to see the lady. Is she hiding, or overwhelmed by both flowers and the dark silhouette of the church spire, echoed in her jacket and stockings? Considering herself untaught, Newcomb said "people who have been taught, their thoughts are second-hand". Ouch! But Morris would agree, wouldn't he? Any connection to Northumberland?

Her mentor, Eric Ennion, set up his own field centre at Monks' House, between Bamburgh and Seahouses, in the 1950s. Perhaps she visited? Time for a Mary Newcomb show up north!

NICK JONES

www.maltingsberwick.co.uk/whats-on/cedric-morris-artist-plantsman-traveller/ <https://bentonend.co.uk/> www.cranekalman.com/artists/52-mary-newcomb/

Perth Art Gallery
Perth & Kinross

MILLAIS
IN PERTHSHIRE
FROM 25 JULY 2025

78 George Street
Perth PH1 5LB
Tel: 01738 632488

THE GRAMMAR COLLECTION GROUP PRESENTS THE NATIONAL MUSEUM COLLECTION
NATIONALLY SIGNIFICANT COLLECTION
OF SCOTTISH ART AND CULTURE
BY GUARANTEE (SCS18247)

CULTURE
PERTH & KINROSS
Culture Perth & Kinross Ltd is a Scottish Charity (SC046033) and is completely limited by guarantee (SCS18247)

it's BRAW! Showcasing local Arts, Crafts, Drama & Music
Blairgowrie & Rattray Arts for Wellbeing
throughout August

Rattray Art Festival
Over 30 artists including:
Featured Artist Rhona Kirkpatrick
Mark McCallum | Christopher Sharp | Tina Gliddon
Stewart Graham | David Mackenzie | Liz Dulley

17th - 24th August
Open daily 10 - 4.30
Blairgowrie Town Hall
14 Brown St, Blairgowrie PH10 6EX
 www.rattrayartfestival.com

Editorial Comment

ArtWork PO Box 3 AB41 9EA :: artwork@famedram.com

Route to cultural self discovery

AS EDINBURGH braces itself for another Festival, another influx of millions of visitors, and another billion pounds plus to the local economy, the same questions come up. How much longer, bigger and better can it become and, if it is to change, in what direction?

The Festival's Director, Nicola Benedetti, is on the case already, highlighting the contribution music makes to wellbeing, with live performances in Edinburgh's Royal Hospital for Children.

For Benedetti it is all part of a wider vision to make the Festival programme both more affordable and more accessible, and to remove barriers to cultural discovery.

More important than ever, therefore, that the government, having just announced its 'Best Start' strategy, recognises the value of investing in arts education now. Culture is a golden egg for the tourist industry, as is

adventure. The further out, the more frequent, the more expensive and exclusive the better. Ideally following the example of certain individuals who shall remain nameless (you know, and they know you know!) rocket trips into space and taking over a whole city for a wedding.

Equally important, though, is self-discovery, finding inner creativity and fulfilment alongside the stimulation of new places and experiences. Ideally both.

The opportunity to see a particular painting, hear that piece of music, read this novel, or see that performance can unlock individual creativity and, given the right support and encouragement, open the doors of perception, imagination, and self-expression.

It's moments like these that can sow the seeds that flower into the great performers of the future.

In search of the Truth we Seek

IN A CANNY move *The Observer* recently devoted its entire front page to the revelation that "The Salt Path", a blockbuster book and now a film, was spun from lies, deceit and desperation.

After months of Trump, Musk, Gaza, and Ukraine, and with the holiday season in full swing, the editor sensed that readers needed a break. What better than a heart-rending story that everyone thought was true?

The line between truth and fiction can be a fine one, and that's before human error and frailty are factored in; we all make mistakes.

Despite howls of protest even Wimbledon has adopted ELC, electronic line-calling. After all, robots are so much more reliable and efficient than humans! But so much more boring too.

Virginia Woolf and her Cambridge friends hoodwinked the Admiralty in 1910, pretending to be Abyssinian royalty,

Time to speak up for the truth

THE BBC continues to receive more than its fair share of criticism over its coverage of the truly heart breaking events in Gaza. A second film – covering the work of doctors in Gaza – has been withdrawn on the slimmest of grounds.

Banned as they are – along with all the world's free media – from reporting first hand on the truly shocking goings-on in Gaza and the Occupied West Bank, it is impossible for them to ascertain

what is really taking place.

The Starmer government, which seems to find it difficult to take any sort of strong line with leaders like Messrs Netanyahu or Trump, should demand proper access for the BBC and all free media.

The world's media should be far more vociferous as well. History well not judge us kindly for our abject timidity.



Glasgow – Oh, Glasgow!

Clare Henry deplores what is happening to the city's iconic Victorian legacy



Watt Brothers store façade — a Glasgow classic

THERE WAS A TIME, not long ago, when Glasgow was known for its majestic and impressive architecture. No longer.

What has gone wrong? Today the City of Glasgow seems determined to demolish, obliterate all its famous Victorian architecture. The loss of the iconic Mackintosh School of Art is enough of a tragedy. So WHY? WHY? are beautiful old Victorian buildings NOT saved and repurposed? Part of the reason is TAX! – VAT is charged on refurbishments but NOT on new build.

So Glasgow vitally needs to change things, to create tax incentives. Turn Glasgow's historic buildings into new accommodation instead of building more and more ugly towers that won't last. Why not recycle, reuse wonderful worldclass architecture? Why is the city council sitting on its hands? Lack of leadership? Laziness?

COLIN DRYSDALE's fab architectural fotos as seen on his Instagram column, *THIS IS MY GLASGOW* have now spawned a book, *GLASGOW UNCOVERED*, £14.99 from Pictish Beast worth every penny for its historical architecture notes alone.

In addition *WESTFEST* organised a terrific series of free talks at Kelvin Hall celebrating Glasgow's architecture including a wonderful film, *SYMPHONY IN STONE* produced by Tony Burton. I am just glad that there are records of Glasgow's magnificent built heritage. But surely it would be it would be so much better to keep the real thing?

Meanwhile architect Gordon Gibb thankfully keeps up his forensic assault on the national scandal that is Glasgow School of Art. In an extraordinary talk about the two Mackintosh fires he pulls aside the

veil of secrecy – (and over £ 800,000 apparently spent on non-disclosure agreements.)

The level of shameful, heartbreaking incompetence was revealed in horrifying detail. As has long been recommended, the Macintosh's future must definitely be put in the hands of an independent trust, with GSA as tenants.

As Sam Ainsley says, "The building is too precious and important to the City of Glasgow and world architecture to be left in GSA hands."

Nathan Coley agrees: "The Mack should be owned by the nation, but it will take a new government to enable that." This sorry saga has ruined Glasgow's reputation - and also that of the Glasgow School of Art. An iconic world famous building has now become a dirty word.



Echoes a nature inspired showcase
Art Exhibition
Harbour Cottage Gallery - Kirkcudbright.
Sue Bibby - Embroiderer
Stuart Gray - Painter
Ruth Clayton - Watercolourist
25th August - 6th Sept 2025
10am til 4.30pm daily

James Hutcheson
23 August – 20 September

CARDSTAPA



Burnside gallery, Selkirk
www.burnsidegallery.co.uk

Arran Artists invite you to join them for their annual
Open Studios Weekend



For the very best
in contemporary art and craft
on the Isle of Arran

15th to 18th August 2025

Visit us . . . to buy, to commission,
out of curiosity . . . or just to enjoy the craic

www.arranopenstudios.org



The

SPRINGFIELD CREATIVE ARTS (FRAN MARQUIS), 4 Springfield Terrace, Arbroath, DD11 1EL, 01241 439 714, www.franmarquis.co.uk, info@fran-marquis.co.uk
Regular weekends and weekdays Pottery Courses. Hand-building wheelwork, functional and sculpture
THE CANVAS ART GALLERY, 81 East High Street, Forfar, DD8 2EQ, 01307 465 715
Originals, prints, quality picture framing. Unusual giftware and jewellery
MONTROSE MUSEUM & ART GALLERY, Panmure Place, Montrose, DD10 8HF, 01674 673232
Until July 21
Lisa Badger. 50 Years: A Creative Life. Glasswork
HOSPITALFIELD, Hospitalfield House, Arbroath, DD11 2NH, 01241 656 124
ARBROATH ART GALLERY, Arbroath Library, Hill Terrace, Arbroath, DD11 1AH, 01241 464545
ARBROATH LIBRARY GALLERY, Hill Terrace, Arbroath, DD11 1AH, 01241 872 248

Argyll

COWAL OPEN STUDIOS, PA23 8QU, www.cowalopenstudios.co.uk
September 26 - 29
Cowal Open Studios 2025. Over 50 artists and makers open the doors of their studios and invite you to visit
RESIPOLE STUDIOS, Acharacle, PH36 4HX, 01967 431 506, www.resipolestudios.co.uk
Artspace with studios, gallery and framing service
TIGHNABRUAICH GALLERY, Seaside House, Tighnabruaich, PA21 2DR, 01700 811 681, www.tiggallery.com, robbie@tiggallery.com
Original art, sculpture, glass, jewellery, poetry
THE HARBOUR GALLERY, Knap, Harbour Street, Tarbert, PA29 6UA, 01880 821170, www.theharbourgallery.com, info@theharbourgallery.com
COMFREY COTTAGE STUDIO, 1 Tayness, Kilmartin, PA31 8QF, anneamwilson@gmail.com
Small gallery where there are an assortment of paintings on view, painted in various media
THE ARCHWAY, 7 Union Street, Lochgilphead, PA31 8JS, 01546 606 894
STUDIO BARN ARGYLL, Leac Na Ban, Tayvallich, Lochgilphead, PA31 8PF, 01546 870 310
Seasonal exhibition of original art
FYNE STUDIOS - THE HIDDEN GALLERY, Newton, Strachur, (off the A886), PA27 8DB, 01369 860 379
Gallery of two Scottish artists Don McNeil & Jean Bell
JUNO DESIGN GALLERY, 159 Argyll Street, Dunoon, PA23 7DD, 01369 707 767
THE STABLE GALLERY, Church Square, Inveraray, PA32 8TY, 01499 302 800
Paintings, reproductions, greetings cards, exclusive post cards
IONA GALLERY AND POTTERY, Isle of Iona, PA76 6SW, 01681 700 439
ORSAY, 2 Stevenson Street, Oban, PA34 5NB, 01631 569 988
Jewellery, ceramics, glass metal, textiles, wood lights, cards
INVERBEG GALLERIES, Inverbeg, Argyll & Bute, Loch Lomond, G83 8PD, 01436 860 277
CAOL RUADH SCULPTURE PARK, Caol Ruadh, Colintraipe, PA22 3AR, 07771 996656
Scottish sculpture park with work by Karen Scotland and Anne Edmonds
THE JETTY GALLERY, 100 George Street, Oban, PA34 5NR, 01631 570102
BENMORE BOTANIC GARDEN, Dunoon, PA23 8QU, 01369 706261
Until September 28 (Tuesdays and Sundays only)
Guided Walk.
Until October 30 (Wednesdays and Thursdays only)
Benmore Explorer Tours.
KILMARTIN MUSEUM, Kilmartin, Lochgilphead, PA31 8RQ, 01546 510 278
Re-opens the doors to over 12,000 years of history

Ayr

MACLAURIN ART GALLERY, Rozelle Estate, Monument Road, KA7 4NQ, 01292 443 708, www.themacclairin.org.uk/

Until August 31
Celebrating John Byrne. Collection of work in conjunction with The Glasgow Print Studio, The Fine Art Society and The Royal Scottish Academy
July 12 - September 7
Frank McNab. New Symbolism. Journey a little deeper into the world of mysticism and the supernatural
ROZELLE HOUSE GALLERY, Rozelle Park, Monument Road, KA7 4NQ, 01292 443 708, www.south-ayrshire.gov.uk/article/24234/Rozelle-House-museum-and-galleries
Ongoing
Alexander Goudie. Tam O'Shanter: A Tale Told in Pictures.

Ayrshire

OPEN STUDIOS AYRSHIRE, Venues throughout Ayrshire, www.openstudiosayrshire.com
Over 70 Ayrshire artists will open their studios to the public
September 12 - 14
Open Studios 2025.
ARRAN OPEN STUDIO, KA27, www.arranopenstudios.com
August 15 - 18
Open Studios 2025. For the best in contemporary art and craft on the Isle of Arran
HARBOUR ARTS CENTRE, 114-116 Harbour Street, Irvine, KA12 8EE, 01294 274 059, thehac.co.uk, harbourarts@north-ayrshire.gov.uk
Fridays (6 Classes from 10am-11:30am)
MCKECHNIE INSTITUTE, Dalrymple Street, Girvan, KA26 9AE, 01465 713 643, www.south-ayrshire.gov.uk/galleries
Until August 31
Pageant of Ayrshire Family Craft Activities.
ART'N'JOY GALLERY AND PICTURE FRAMERS, 52 Hamilton Street, Saltcoats, North Ayrshire, KA51 5DS, 01294 472 222, www.artnjoy.co.uk
THE FRAMEWORK GALLERY, 83 Portland Street, Troon, KA10 6QU, 01292 316 144
Continuous mix of original paintings and printwork by a variety of artists
CRAFT TOWN SCOTLAND, The Barony Centre, West Kilbride, KA23 9AW, 01294 829179
Until July 12
The North Ayrshire Pupil's Photographic Exhibition.
THE WELLINGTON GALLERY, 13 Wellington Street, Kilmarnock, KA13 1DW, 01563 523 176
Original paintings, prints and other artworks mainly from Scottish artists
ARTI FARTI EXHIBITION GALLERY, 48 Hamilton Street, Saltcoats, KA21 5DS, 01294 287207, www.arti-farti.co.uk, artifarti48@outlook.com
Originals & Limited Editions
SCOTTISH MARITIME MUSEUM, The Linthouse Building, Harbourside, Irvine, KA12 8QE, 01294 277 177, www.scottishmaritimemuseum.org, visitorservices@scotmaritime.org.uk
A dynamic, world-class, national maritime museum that informs, educates and inspires
Until August 9
Denny Social. Explores the lives, work, and social connections of the people who made the Denny Experiment Tank in Dumbarton
STUDIO 44 GALLERY, 44 Boyd Street, Largs, KA30 8LE, 07432 122772, www.studio44gallery.co.uk/
July 15 - August 3
Jim Wylie, Bridget Hunter, Julie Smith, Madhumati Manda, Laura Queen and Eileen Anderson. Expressions and Interpretations.
SOUTER JOHNIEA TMS GALLERY, Main Road, Kirkoswald, KA19 8HY
Home of the shoemaker immortalised by Robert Burns in Tam o'Shanter

Banff

DUFF HOUSE COUNTRY GALLERY, Duff House, AB45 3SX, 01261 818181, www.nationalgalleries.org/visit/duff-house
Until August 24
Henri Martin. Work In Focus: Berenice. Painting
MEADOWLANDS GALLERY, 83 North Castle Street, AB45 1JJ, 01261 818 535, meadowlands-banff@aol.com
Douglas Heggie - New work
PORTSOY GALLERY, 21-23 Low Street, Portsoy, AB45 2QQ, 07436 057489

‘Woodpecker’ Bewick – and follower Beckwith

Nick Jones traces a finely carved line in the wood

I’M TWELVE MILES inland from Newcastle, looking down on the River Tyne from Cherryburn, the birthplace of Northumberland’s most famous xylographer, the “woodpecker” Thomas Bewick.

Sure enough, there’s the cherry tree, and the burn, albeit dry this summer. Born in August 1753, he lived until 1828, through seven decades that saw England transformed by mechanisation and industrialisation. All powered by coal hewed from subterranean seams, like those between Tyne and Tees, including beneath his feet and, now, standing here, mine.

I’m struck by three outstanding qualities of this place. First, the Tyne valley is a natural boundary between the north and south of Britain, just south of Hadrian’s Wall. More symbolic than practical really, but some think Scotland starts north of it. They’re not wrong, just a few miles too far south!

Second, this river is just one of several thoroughfares linking east to west, Tyne to Solway, alongside Roman Stanegate: the Newcastle-Carlisle Railway, opened in 1835; the A69 trunk road; and the western flightpath to Newcastle airport.

There have even been plans to cut a ship-canal through, saving the long and stormy passage round Cape Wrath.

Thirdly? Cherryburn’s simple rurality and peace; an oasis of calm amidst the rush and

hurly-burly of modern life.

Bewick is a fine woodcarver, some would say the finest, and in both senses of the word too. Boxwood’s close grain, carved end on, across the annual rings, enabled him to engrave very precise lines, delineating his subject in great detail, with extraordinary subtleties and variations of tone. He was a great naturalist too, observing, drawing, painting and carving illustrations for his two volume “History of British Birds”, and “A General History of Quadrupeds”.

He’s much more than that. Preliminary sketches and watercolours show an accomplished artist, revealing the character of a bird; the self-confidence of the starling, the robin’s alert aggression. One sadness is that so many of these birds are rare, endangered, gone, or enigmatic, like the “Lesser Imber” and the “Cinerosus Godwit”.

A keen observer of human nature, and quite a rascal as a lad, he delighted in illustrating “Aesop’s Fables”, along with his own wryly humorous “tale-pieces”, like the one about the tight-fisted farmer who forced his cow to ford the fast-flowing Tyne rather than pay the toll at nearby Ovingham bridge. Both made it, but the farmer’s hat floated downstream – much more expensive to replace than a toll!

It would be easy to dismiss Bewick as a relic of the past, a curiosity of art history, with nothing of interest or relevance to tell us about his world or ours, but that would do him an injustice.

His message to us is clearer and more urgent by the day: value nature and the countryside; keep in “touch”, quite literally, with the skill and pleasure of handiwork, working with your hands; live and work slowly, being in the moment, or you risk missing the important things in life – a ladybird on a leaf, a caterpillar, the sound of the curlew, and the peace that comes with patient observation.

Recognition of Bewick’s legacy owes much to that great north-easterner, Dr Frank Atkinson, founder of Beamish, recently announced as Artfund Museum of the Year 2025. Atkinson also



established the Thomas Bewick Birthplace Trust in 1987, handing it over to the National Trust in 1990.

Today the tradition of woodcarving established by Bewick is supported by the Society of Wood Engravers, whose former chairman, Chris Daunt, has an exhibition at Cherryburn – “Beasts, Bewick and Me”. He’s just published “The Art and Craft of Wood Engraving”.

The slow, contemplative discipline of carving seems to have an affinity with the religious life, so it’s no surprise that, after being taught letter carving, he spent some time as a Cistercian monk.

As it happens I’m with a former Franciscan monk, Andrew Beckwith, friend and neighbour in north Northumberland. We’ve just visited Ovingham church, across the Tyne, where Bewick is buried. Andrew, a woodcarver, like father and grandfather before him, is doing a reccy for carving a “peal-board”, a commemorative panel celebrating the ringing of a particular peal, like “Yorkshire Surprise Major”, or “Stedman Caters”.

Once he’s accepted a commission, and visited the church, he draws up the design and layout of the lettering to be gouged out on an oak board, before incorporating intricate coloured heraldic details in limewood.

Fortunately there are “Beckwith Peal-Boards” in churches across the country, including Hexham Abbey, Bampton, Newton Hall and, soon, here at Ovingham. Andrew’s a bell-ringer too, so definitely the right man for the job, but he’s not getting any younger, and skilled letter-carvers are few and far between. Good news, then, that he has found an apprentice.

Long live tintinnabulation!

www.chrisdaunt.com/ www.bewicksociety.org/ www.nationaltrust.org.uk/visit/north-east/cherryburn



FINANCIAL HELP FOR SCOTTISH ARTISTS

The Scottish Artists’ Benevolent Association exists to afford relief to distressed artists, their widows, orphans or dependants.

Grants are payable to those who may be experiencing difficulties due to old age or ill health. Applications are considered in April and November. Assistance may also be given for emergency situations and these are dealt with on an ongoing basis.

Application forms are available by email from the Secretary
Lesley Nicholl: lesley@robbferguson.co.uk

The Scottish Artists’ Benevolent Association • c/o Robb Ferguson
Regent Court, 70 West Regent Street, Glasgow G2 2QZ • 0141 248 7411



Gordon K Mitchell RSA RSW RGI

scottishartistsbenevolentassociation.co.uk Charity No: SC011823

Report from Mount Stuart, Isle of Bute

ORGASMADDICT. Twenty years after first visiting the enchanting architectural masterpiece of Mount Stuart on the Isle of Bute, I would have never guessed *that* record would be the link for returning.

The single's cover sleeve, by the punk band the Buzzcocks, been brazenly shown off by myself, hanging out my school bag as an earnest teenager was the reason I was back.

Linder Sterling, aka Linder, who had originally designed the iconic racy single cover, had been commissioned to produce new art works for Mount Stuart.

For those who have never visited Mount Stuart, it is a spectacular Neo-Gothic, 'A' listed private home, almost totally rebuilt following a fire in the 1870's by Scotland's foremost Edwardian architect Sir Roland Anderson for the wealthy aristocrat The Marquis of Bute.

Anderson also designed the Portrait Gallery in Edinburgh. Although they share the same scale of columned hall, the materials and detailing, it soars into a league of its own, keeping out Glasgow's City Chambers.

I had been expecting the exhibition to hit me like first viewing the Epstein Rockdrill, but it was the opposite, the works were subtle and had almost merged seamlessly into the layered fabric of this extraordinary building.

Once I had tuned in - thank you, Morvern - the works began to emerge in layers and enrich this wonderful experience. The carefully positioned books set the back dialogue and the key - Sir

Walter Scott's the Lay of the Last Minstrel, Lewis Carroll's Alice in Wonderland and Marina Warner's From the Beast to the Blonde - gave a code to try and decipher the linking of glamour, children's tales and feminism through a series of considered art works throughout the main rooms.

The works combine images of fairytale tea parties with childhood photographs from Mount Stuart's own family collection with provocative photomontages in full Dada that provides a robust counter to the carved coats of arms depicting the male lineage set within the historic walls.

Frustratingly, I was unable to see the commissioned performance that was choreographed to link these works together by Holly Blakey: all that was left was the strange sensual costumes by Ashish Gupta with access for multiple hands and a voluptuous Alison Watt-esque dress in red and tinsel epaulettes that would suit Elton John, skilfully embroidered by West Dean Tapestry Studio.

However the performance set to music by Maxwell Sterling will travel to the mystical Oak Lawn at the Royal Botanic Gardens in Edinburgh on August 7 to open EAF25

The exhibition will run at Mount Stuart until August 31. Linder's major touring retrospective Linder: Danger Came Smiling will be presented within Inverleith House, at the Royal Botanic Gardens, Edinburgh until October 19.

CRICHTON WOOD



Art among the marbled opulence of Mount Stuart on Bute

Full Circle Gallery at the High st Merchants



Original Acrylic, 'Bowman's Croft, Upper Cabraich' by Eleanor Honeyborne-Heaney

Gallery & Restaurant

74 High Street Grantown on Spey, PH26 3EL - Tel: 01479 482011

Beautiful selection of Fine Art, Crafts & Photography, relaxing atmosphere complimented with refreshments
Please phone ahead for opening hours:

"Cascade" by Simon Laurie, RSW RGI



RSW
THE ROYAL SCOTTISH
SOCIETY OF PAINTERS
IN WATERCOLOUR

Gairloch Museum
Summer Exhibition

5th July ~ 30th August

Gairloch MUSEUM
Taigh-tasgaidh Ghearrloch

Guide

Banffshire

TOMINTOUL GALLERY, 82 Main Street, Tomintoul, Ballindalloch, AB37 9HA, 01807 580 458
Batik fine art by Jane Lannagan, original art, prints, cards and interesting gifts

Beaulieu

KILMORACK GALLERY, The Old Kilmorack Church, IV4 7AL, 01463 783 230, www.kilmorack-gallery.co.uk, art@kilmorack-gallery.co.uk
Until July 25
Ann Oram. New Work.
Jane MacNeill. New Work. Cairngorms - inspired by water and land

Berwick-upon-Tweed

BERWICK GYMNASIUM ART GALLERY, Berwick Barracks, The Parade, TD15 1DG, 01289 304 535
DOCKSIDE GALLERY, 84 Main Street, Tweedmouth, TD15 2AA, 01289 302437, www.docksidegallery.co.uk

An ever-changing exhibition of original paintings, prints, cards and gifts including ceramics and jewellery
Ongoing
Ever-changing exhibition.

BERWICK MUSEUM & ART GALLERY, The Clock Block, Berwick Barracks, The Parade, TD15 1DG, 01289 309 538
Ongoing

Berwick Burrell Collection. A collection of fine art and delightful Oriental porcelain

AMY IZAT, 27 Art House, Bridge Street, Berwick-upon-Tweed, TD15 1ES, www.amyizat.com/gallery, hello@amyizat.com
Fine Art Studio, gallery and shop

NUMBER FOUR GALLERY, Northfield Farm, St Abbs, Berwickshire, TD14 5QE, 01890 771 111
Contemporary work from artists and designer/makers from both sides of the Border

PAXTON HOUSE, Paxton house, Paxton, TD15 1SZ
MARTA UTSLER, 01289 763748, www.martautsler.com, martautsler@gmail.com
Art Inspires

FIELDHOUSE GALLERY, 47 Bridge Street, TD15 1ES, 07483 873325, www.fieldhousegallery.com, kerryfieldhouse@btinternet.com
New gallery in Bridge Street

BIRMINGHAM
IKON GALLERY, 1 Oozells Square, Brindleyplace, B1 2HS, 0121 248 0708
BIRMINGHAM MUSEUM & ART GALLERY, Chamberlain Square, B3 3DH, 0121 348 8000
Until September 28

Ozzy Osbourne. Working Class Hero. Celebrates the solo achievements and global awards of the rock icon

Birmingham

THE SCOTT GALLERY, Hawick Museum, Wilton Lodge Park, Hawick, TD9 7JL, 01750 20096, www.liveborders.org.uk/culture/museums/our-museums/hawick-museum

WATERFALL GALLERY, Hawick Museum, Wilton Lodge Park, Hawick, TD9 7JL, www.liveborders.org.uk/culture/museums/our-museums/hawick-museum/

THE CHRISTOPHER BOYD GALLERY, Old Gala House, Scott Crescent, Galashiels, TD1 3JS
THE ROADSTEAD GALLERY, St Ellas Place, Eyemouth, TD14 5HP, 018907 52067

REAL WOOD STUDIOS, Monteviot Nurseries, Nr Ancrum, Jedburgh, TD8 6TU, 01835 830 767
Contemporary Scottish furniture Caf   and walks

BUY DESIGN GALLERY, 1 Harestanes Craft Workshops, Harestanes by Ancrum, Jedburgh, TD8 6UQ, 01835 830 718
Showspace for quality crafts made in wood, metal, glass, ceramic and textile

Bristol
ARNOLFINI, Bush House, 16

Narrow Quay, BS1 4QA, 0117 917 2300
BRISTOL DRAWING SCHOOL, Unit 5.18, Paintworks, Arncliffe, BS4 3EH
Until August 10
Various artists. Soft Power: lives told through textile art. Storytelling

ROYAL WEST OF ENGLAND ACADEMY, Queens Road, Clifton, BS8 1PX, 0117 973 5129
Until August 10
Various artists. Soft Power: lives told through textile art. Storytelling

Caithness
LYTH ARTS CENTRE, Lyth, Wick, KW1 4UD, 01955 641 270, www.lytharts.org.uk
October 25 & 26
The Ancient Oak of Baldor. A folk tale of love, loss and the interconnectedness of all things

THURSO ART GALLERY, Davidson's Lane, Thurso, KW14 7AS, 01847 896 357

Castle Douglas
CLIENCE STUDIO, 212 King street, DG7 1DS, 01556 504318, www.cliencestudio.co.uk
Gallery & studio of Angela Lawrence: changing displays of land & seascape paintings & prints, mostly Galloway & Western Isles. Art gifts Commissions

DESIGNS GALLERY & CAFE, 179 King Street, DG7 1DZ, 01556 504 552, www.designsgallery.co.uk, admin@designsgallery.co.uk
A selection of books, prints and cards with a caf   that provides coffee and food, using simple and locally produced ingredients

ARTS OF ALBA, 39/40 Threave Terrace, DG7 1HG, 01556 504 020
Featuring the work of Freida Dyson, Sam Mullen and Sheila Mullen
THE GALLERY AT LAURIES-TON, Woodbank House, Laurieston, DG7 2PW, 01644 450 235
Contemporary and traditional Fine Art and Landscape images of Galloway

DALBEATTIE VISITOR INFORMATION AND CRAFT CENTRE, 24 High Street, Dalbeattie, DG5 4AA, 01556 612 752
4th Saturday of Month
Colvend Produce and Makers Market
NORTH GLEN GALLERY, North Glen, Palnackie, Castle Douglas, DG7 1PN, 01556 600 200
Exhibitions open studio, glassblowing, oil lamps, chandeliers, wine goblets. Call for details
SAMPHIRE GALLERY, 149 King Street, DG7 1DX
BARNHOURIE FARM STUDIO, Sandyhills, Dalbeattie, DG5 4PU
ARTISTS & MAKERS, 141 King Street, DG7 1DX, www.marycarrollartworks.co.uk, marycarrollartworks@hotmail.com
Art and creations from 20+ local artists & makers living and working within Dumfries & Galloway

Cornwall
ROYAL CORNWALL MUSEUM, River Street, Truro, TR1 2SJ, 01872 272 205
Until September 14
Cornwall College: Summer Show 2025. Showcase
LEMON STREET GALLERY (LSG), 13 Lemon Street, Truro, TR1 2LS, 01872 275 757

County Durham
BOWES MUSEUM, Newgate, Barnard Castle, DL12 8NP, 01833 690 606
Until January 3 2026 (Saturdays only)
Artist Makers - Children. Make time for making; join in and get creative - recommended for ages 8+
THE ORIENTAL MUSEUM, Elvet Hill, DH1 3TH, 0191 334 5694
Until November 2
Beasts and Legends: Adventures Through North East Folklore. Explores the development of storytelling throughout Historic County Durham

Crieff
AITON FINE ARTS, 63 King Street, PH7 3HB, 01764 655 423

Visit: www.artwork.co.uk

NO 13 GALLERY



See web or social media for opening hours

13 High Street,
Newport on Tay
DD6 8AB

www.no13gallery.co.uk

New Exhibition opens

23rd August until 25th October

Allan Beveridge
a Retrospective of
Paintings,
Printmaking

Printmaking,
Paintings, Ceramics,
Photography,
Gifts and Cards

dockside
GALLERY



www.docksidegallery.co.uk

original art | ceramics | jewellery | inspiration

Find us by the dock, over the water in Tweedmouth

01289 302437 | art@docksidegallery.co.uk

84 Main Street, Tweedmouth, Berwick upon Tweed, TD15 2AA

Image : Luke McTaggart, View of Berwick, Acrylic on canvas, 90x90cm

The

Contemporary Scottish paintings and prints. Picture restorers and framers
THE STRATHEARN GALLERY,
32 West High Street, PH7 4DL,
01764 656 100, www.strathearn-gallery.com, info@strathearn-gallery.com
Until August 31
Summer Stories and Collecting.
September 6 - October 5
Helen Glassford. Solo

Cumbria

ABBOT HALL ART GALLERY,
Kendal, LA9 5AL, 01539 722464
Exhibition talks, holiday workshops,
gallery book shop, coffee shop
Until December 31
Emma Stibbon, Elisabeth Frink,
John Ruskin, Bryan Kneale, George
Shaw and Matt Kelly.

**KENDAL MUSEUM, Station
Road, Kendal, LA9 6BT, 01539
815597**

Until August 17
Summer Exhibition. Cry of the
Curlew

**BLACKWELL, Bowness-on-
Windermere, LA23 3JT, 01539
446 139**

BREWERY ARTS CENTRE,
Highgate, Kendal, LA9 4HE,
01539 725 133

July 25 - September 13
Young Artists Open Exhibition
2025. Explores Kendal from the
individual viewpoints of local Young
Artists

**EDEN ARTS, 1 Sandgate, Penrith,
CA11 7TP, 01768 899 444**

**PENNINE POTTERY, Cargill
Head House, Alston, CA9 3NG,
01434 382 157**
Pottery & kiln work of ceramicist
Peter Lascelles - please telephone
first

**RED BARN GALLERY, Mel-
kinthorpe, Penrith, CA10 2DR,
01931 212 767**

**MUSEUM OF LAKE LAND
LIFE & INDUSTRY, Abbot Hall,
Kirkland, Kendal, LA9 5AL,
01539 722 464**

Until October 5
Annie Garnett: The Alchemy of
Colour. Featuring embroidered and
woven textiles

**WILLOWPOOL DESIGNS, 9
Weston Houses, Endmoor, Kendal,
LA8 0HA, 01539 567 056**

Willow work by Simone Siegan &
Steve Fuller

**DOVE COTTAGE & THE
WORDSWORTH MUSEUM,
Dove Cottage, Grasmere, LA22
9SH, 015394 35544**

Until November 1
The Time Lab. Exploring a Living
Prelude

**FARFIELD MILL, Garsdale
Road, Sedburgh, LA10 5LW,
01539 621 958**

July 16 - September 14
Sue Lancaster. Whatâ€™s the Point.
Exploring landscapes in a variety
of media

**TULLIE HOUSE MUSEUM AND
ART GALLERY, Castle Street,
Carlisle, CA3 8TP, 01228 618718**

Until September 14
Dinosaur rEvolution. Brings ani-
matronic dinosaurs to Carlisle

**THE GALLERY AT RHEGED,
Rheged Centre, Redhills, Penrith,
CA11 0DQ, 01768 868 000**

July 18 - October 5
In Bud & Bloom.

**UPFRONT GALLERY AND
COFFEE SHOP, Nr Hutton-in-
the-Forest, Unthank, Penrith,
CA11 9TG, 01768 484 538**

**BRANTWOOD, The Brantwood
Trust, Conistone, LA21 8AD, 01539
441 396**

Until August 10
Tony Galuidi. The Great Trees of
Cumbria. Drawings

Dumfriesshire

**GRACEFIELD ARTS CENTRE,
28 Edinburgh Road, DG1 1JQ,
01387 262 084, www.dgculture.co.uk/venue/gracefield-arts-centre/,
arts@dumgal.gov.uk**

Until August 2
Joan Eardley, Oscar Marzaroli and
Audrey Walker. Pavement Artists.
Brings these artists together for the
first time capturing a by-gone age

**SPRING FLING OPEN STU-
DIOS, Gracefield Arts Centre, 28
Edinburgh Rd, DG1 1JQ**
**ROBERT BURNS CENTRE, Mill
Road, Dumfries, DG2 7BE, 01387
264808**

Check website for more details
July 25 - 31
Superman (12A). Film
**SANQUHAR TOLBOOTH
MUSEUM, High Street, Sanquhar,
DG4 6BN, 01659 50186**

Discover Sanquhar's world famous
knitting tradition

**DUMFRIES MUSEUM AND
CAMERA OBSCURA, The Ob-
servatory, Rotchell Rd, Dumfries,
DG2 7SW, 01387 253 374**

July 12 - August 30
Burns Walking Tours. Explore the
legacy of Scotland's national bard

**THOMAS TOSH, 19 East Morton
Street, Thornhill, DG3 5LZ, 01848
331553**

Features a caf  , interiors, gift and
book departments and gallery

Dundee

**DUNCAN OF JORDANSTONE
COLLEGE OF ART & DESIGN
GALLERIES, University of
Dundee, 13 Perth Road, DD1 4HT,
01382 385 330**

Until December 31
The Ignorant Art School: Five Sit-
ins towards Creative Emancipation.

**LAMB GALLERY, University of
Dundee, Tower Building, Nether-
gate, DD1 4HN, 01382 385330**

**HANNAH MACLURE CENTRE,
University of Abertay, Top Floor,
Abertay Student Centre, 1 - 3 Bell
Street, DD1 1HP, 01382 308 777**

**THE MCMANUS: DUNDEE'S
ART GALLERY & MUSEUM,
Albert Square, Meadowside, DD1
1DA, 01382 307 200**

Until January 18 2026
Mella Shaw. Sounding Line.
Ceramic installation

**DUNDEE CONTEMPORARY
ARTS (DCA), 152 Nethergate,
DD1 4DY, 01382 909 900**

August 15 - 17
Masterclass: Stone Lithography.

**COOPER GALLERY (EXHIBI-
TIONS), Duncan of Jordanstone
College of Art & Design (DJCAD),
University of Dundee, 13 Perth
Road, DD1 4HT, 01382 385 330,
www.dundee.ac.uk/cooper-gallery/exhibitions/**

Until July 25
Trinity Buoy Wharf Drawing Prize
2024. Contemporary drawings

Until December 31
The Ignorant Art School: Five Sit-
ins towards Creative Emancipation.

**THE KRYSZTYNA GALLERY,
15A Nelson Street, DD1 2PN,
01382 322 522, krysztyntart@gmail.com**

Drawings, Paintings and Prints
**BROUGHTY CASTLE MUSE-
UM, Castle Approach, Broughty
Ferry, DD5 2TF, 01382 436916**

Until January 18 2026
Mella Shaw. Sounding Line.
Ceramic installation

**IARTSUPPLIES, Unit F, Hawkhill
Court, DD1 4JG, 0330 223 0922,
www.iartsupplies.co.uk**

Online Art Shop and Art Supplies
All year round

Online Art Supplies. High quality
student and artist ranges of Oil,
Acrylic, Gouache, Watercolour,
Watermixable Oil Paints, Lino and
other printmaking equipment

**LIFESPACE SCIENCE ART
RESEARCH GALLERY, College
of Life Sciences, University of
Dundee, DD1 5EH, 01382 381023**

**MILLS OBSERVATORY, Glamis
Road, Balcay Park, DD2 2UB,
01382 435 967**

Britain's first purpose-built public
observatory

**ROSEANGLE GALLERY, 17
Roseangle, DD1 4LP**

**GENERATOR PROJECTS, 25/26
Mid Wynd Industrial Estate, DD1
4JG, 01382 225982**

Generator Projects is a dynamic,
vibrant exhibition and events space
in the heart of Dundee

East Lothian

**GREENS & BLUES, 59 High
Street, North Berwick, EH39
4HG, 01620 890 666, www.greensandblues.co.uk,
info@greensandblues.co.uk**

From April 25
25th Anniversary Exhibition.
  Featuring 25 artists from the last
25 years

**POLDRATE ARTS AND
CRAFTS CENTRE, The
Elizabeth Hamilton Buildings,
Poldrate, Haddington, EH41
4DA, www.thepacc.org.uk,
info@thepacc.org.uk**

**FIDRA FINE ART, 7-8 Stanley
Road, Gullane, EH31 2AD, 01620
895057, www.fidrafineart.co.uk,
info@fidrafineart.co.uk**

200 years of Traditional and Con-
temporary Scottish Art

Until August 31
Shona Barr, George Birrell, Jemma
K Derbyshire, Nael Hanna, John
Kingsley, Alan Macdonald, John
McClenaghan, Saul Robertson,
Jayne Stokes & Astrid Trugg with

Artists' Town? Which one, though?

LONG recognised as THE artists' town, Kirkcudbright faces competition from a close neighbour with a highly respectable cultural pedigree. Mary Gladstone reports.

WUTH WELL-KNOWN names like William Mouncey, Jessie M. King, Charles Oppenheimer, E. A. Hornel, Christian Jane Fergusson and Lena Alexander associated with Kirkcudbright, how could it not have earned the tag, Scotland's Artists' Town?

Kirkcudbright's influence, however, wasn't (and still isn't) confined to the town itself. Eight miles farther west, is Gatehouse of Fleet, a smaller town but no less interesting in its artistic legacy.

During the first half of the 19th century James Faed, a local miller, married Mary McGeoch. They had 6 children, 5 of whom became artists, some exhibiting at the Royal Academy, London and others at the Royal Scottish Academy, Edinburgh.

John, the eldest, painted miniatures, Thomas exhibited at the RA in 1864, James was an engraver and Susan painted and

exhibited at RSA, Edinburgh. The Faeds inspired future artists in Scotland, including E. A. Hornel, one of Kirkcudbright's most famous artists.



Dumfries & Galloway in the south-west, with its picturesque towns, varied coastline, magnificent hills and diffuse

light, has attracted artists for at least two hundred years. While, formerly the Glasgow Boys and female artists, headed by Jessie M King, lived in Kirkcudbright, giving the town its reputation, today's artists and creatives are more diffuse, their homes and studios sometimes located in more remote parts of the region.

The sculptor and photographer of land and environmental art, Andy Goldsworthy is based in Penpont village, near Thornhill in Dumfries-shire. Artist and print-maker, Lisa Hooper, practises in Port William by Luce Bay, Wigtownshire and felt artist, Linda Irving has settled at the southern tip of the Rhins of Galloway.

Although Kirkcudbright and Gatehouse lay claim to a rich artistic legacy, there's not a huge difference between them. Gatehouse's population is 990 while Kirkcudbright's is 3,391. Gatehouse has a more feudal heritage than Kirkcudbright. Its streets of neat 18th and early 19th century houses were planned by local landowner James Murray, whose descendants are now selling. Cally estate of 2,780 acres, is up for sale for over   7 million.

As with other towns, Gatehouse and Kirkcudbright have a river flowing through them. Fortunately, for Gatehouse, the Fleet river has a less faulty bridge than its counterpart in Kirkcudbright crossing the Dee.

On March 21, Dumfries & Galloway Council ordered Kirkcudbright's ugly 5-span, reinforced concrete bridge, built in 1926, to close, which meant a five mile detour for drivers. It re-opened 100 days later on July 4. Complaints that the closure split the town in half and cut off traffic from Castle Douglas and Gatehouse of Fleet, didn't perturb artist, gallery-owner, Richard Brinley, whose gallery, until well into May was situated in the town.

"I don't think the closure affected tourism much as you don't pass through Kirkcudbright. It's a destination town. It was detrimental to the other side of the river (without the shops and galleries). I think we got publicity from being cut off!"

Richard knows both towns well. He came from Nottingham 25 years ago to live in Gatehouse and loves the Fleet estuary and valley, feeling at one with this environment. He owned Ochre Gallery,



4th-22nd
Aug
2025
Open
Mon-Sat
11- 4pm.

Benet's Gallery
Le Jardin de Madame Sourire

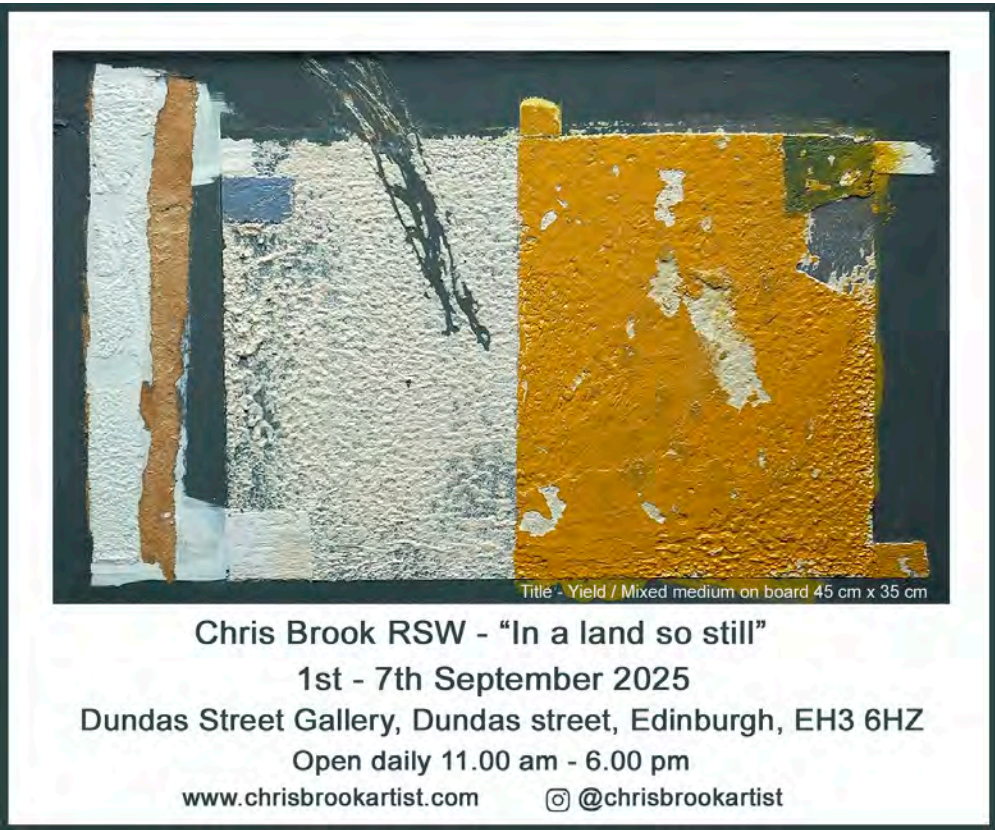
31 Montague, St Edinburgh, EH8 9QS. email:benethaughton@gmail.com




**Orkney paintings,
prints & etchings**
with
*local craftwork in silver,
textiles & ceramics
and many
unusual gifts*

**128 Victoria Street
Stromness
Orkney**

 **01856 850644**



Title - Yield / Mixed medium on board 45 cm x 35 cm

Chris Brook RSW - "In a land so still"
1st - 7th September 2025
Dundas Street Gallery, Dundas street, Edinburgh, EH3 6HZ
Open daily 11.00 am - 6.00 pm
www.chrisbrookartist.com  [@chrisbrookartist](https://www.instagram.com/chrisbrookartist)

For Advertising...



of the past.

Things changed for the better when in 2010, WASPS (Workshop and Artists' Studio Provision Scotland) linked two houses, Cannonwalls and Claverhouse, to provide 14 affordable artists' studios.

Eight years later (in 2018) Kirkcudbright Galleries was established, which has helped bring new art and artists to the community.

Gatehouse has new blood too. Like Kirkcudbright, with its Art & Craft Trail (August 1-4), Gatehouse's Gala Week (July 27 – August 3) draws crowds. This year the volunteer-run Big Lit Fest, "a small, rural festival with a big heart and huge ambitions" is July 18-20. As for the Mill on the Fleet, all three



Left, Harbour Gallery and Castledykes Castle, Kirkcudbright and above, Richard Linley outside his Ochre Gallery, in Gatehouse

floors are packed with activity, including PA Popup shows, run by a co-operative exhibiting 'professional artists' work.

As for the Mill's café, it's had a major re-vamp, offering fresh ideas on 'fresh' (presumably) food, that's locally grown, foraged or picked from the communal garden cultivated at the Mill itself.

On top of it all, Liz Gilbey leads weekly art classes at Rusko Studios nearby. Gatehouse is beginning to give those Faed siblings a run for their money!

MARY GLADSTONE



close to the Tolbooth, in Kirkcudbright, for 10 years and has now moved it to Rutherford Hall, a Grade B listed old church building in Gatehouse's High Street, close to the river.

The different moods and colours of the Galloway scenery have persuaded Richard to paint land and seascapes. He also paints birds. At this time of the year, swallows, house martins and swifts offer a compelling subject, as do musicians. He is fascinated by movement and tries to capture it in avian and human form.

Richard regards both towns as attractive artist centres and reminds your ArtWork reporter that Dorothy L. Sayers's 1931 detective novel, "The Five Red Herrings", set in Galloway, has artists living and painting in studios in both Kirkcudbright and Gatehouse.

"There have always been artists in Gatehouse. When I came to live in the town, there were as many here as there were in Kirkcudbright."

By the beginning of the 21st century, it wasn't so easy for them. Any advantage in being connected to a famous artists' colony had long gone. Kirkcudbright was (and still is, to a certain extent), known for its artists

BIG ART SHOW



THE ART DEPARTMENT 9-11 CAUSEYSDIE ST PAISLEY PA1 1UW

30 AUG - 15 NOV 2025

**Open Tue-Sat
10am-4pm**

**@bigartshow
@artdeptpaisley**

Scottish Charity SC023620

ceramics from Sarah Lawson, Arran Ross and Ronnie Fulton. Summer Exhibition. Collection of works

SEASHORE GALLERY, Marshall Street, Cockenzie, EH32 0HT, 0793 592 8288

Paintings, jewellery, wood, ceramics, glass, prints, cards

WESTGATE GALLERY, 39-41 Westgate, North Berwick, EH39 4AG, 01620 894 976

Paintings, limited edition prints, sculptures, ceramics & glass. Licensed Gallery café

BRAID IMAGE, 60 Rhodes Park, North Berwick, EH39 5NA, 01620 890 780

Large Panoramic Art Photographs, Printed on Canvas. View on-line gallery or visitors by appointment

GALLERY 27, Dunbar Business Center, 8 Spott Rd, Dunbar, EH42 1RS, 07942 676804

PAINTBOX SCHOOL OF ART, Cockenzie House & Gardens, 22 Edinburgh Rd, Cockenzie, EH32 0HY, 07852 951 592, www.paintboxartclasses.com, paintboxart@outlook.com

April till September

Robin Wu, Janet Melrose, Dominic Melvor, Lucy Gogoliuk, Kittie Jones, Jo Perkins Mixed Media Tree. Summer Courses 2025.

NATIONAL MUSEUM OF FLIGHT, East Fortune Airfield, North Berwick, EH39 5LF, 0300 123 6789

Until October 4 2026

Maps: Memories from the Second World War. Discover the creation and use of maps through personal stories, photography, and memorabilia

THE SCOTTISH ORNITHOLOGISTS' CLUB (SOC), Waterston House, Aberlady, EH32 0PY

Until July 27

Darren Rees, Jonathan Pomroy & Katie Warner. Watercolours, Sketches and Willow

July 30 - September 21

Liz Myhill & Louise Pallister. Watercolours and prints

MADE ARTS HUB, 21a Hardgate, Haddington, EH41 3JW

Makers Gallery, Creative workshops, Community Art

Edinburgh

THE SCOTTISH NATIONAL GALLERY, The Mound, Princes Street, EH2 2EL, 0131 624 6200

Until September 28

Andrew Geddes. Experiments in Etching. Display

SCOTTISH NATIONAL GALLERY OF MODERN ART, 75 Belford Road, EH4 3DR, 0131 624 6200

Until October 28 (Modern One)

Rhythm. Display - paintings

Until July 4 2026 (Modern Two)

Vanley Burke, John Deakin, Fay Godwin, Edith Tudor-Hart, David Hurn, Tish Murtha, Humphrey Spender, and Paul Trevor, and more. Resistance. How protest shaped Britain and photography shaped protest

CITY ART CENTRE, 1-3 Market Street, EH1 1DE, 0131 529 3993

Until October 12

William Johnstone, Joan Eardley, Eduardo Paolozzi, Ian Hamilton Finlay, Elizabeth Blackadder and Maud Sulter. Out of Chaos: Post-War Scottish Art 1945-2000. Examines the wider context of post-war Scottish art

THE ROYAL SCOTTISH ACADEMY BUILDING, Upper Galleries, EH2 2EL, 0131 225 6671, www.royalscottishacademy.org

July 26 - November 2

Andy Goldsworthy: Fifty Years.

Until December 31

William Gillies: Modernism and Nation.

THE SCOTTISH GALLERY, 16 Dundas Street, EH3 6HZ, 0131 558 1200, www.scottish-gallery.co.uk, mail@scottish-gallery.co.uk

Until July 26

St Judea's. The Art of Collaboration - Part Two. Printmaking

Until July 26

Alexander Goudie. La Belle Vie | ACT II. Works

THE FRUITMARKET GALLERY, 45 Market Street, EH1 1DE, 0131 225 2383

NATIONAL MUSEUM OF SCOTLAND, Chambers Street, EH1 1HF, 0131 225 7534

Until January 26 2026

Cold War Scotland. Explores the stories of Scots at the centre of this global conflict

NATIONAL LIBRARY OF SCOTLAND, George IV Bridge, EH1 1EW, 0131 623 3700

Until April 18 2026

Dear Library. Champions the value of books and libraries to people's lives

SCOTTISH NATIONAL PORTRAIT GALLERY, 1 Queen St, EH2 1JD, 0131 624 6200

Until September 14

The World of King James VI & I. Over 140 objects are on display

INVERLEITH HOUSE, Royal Botanic Garden, 20a Inverleith Row, EH3 5LR

CURIOUSER AND CURIOUSER, 93 Broughton Street, EH1 3RZ, 0131 556 1866, www.curiouserandcuriouser.com, hello@curiouserandcuriouser.com

THE QUEEN'S GALLERY, PALACE OF HOLYROODHOUSE, Palace of Holyroodhouse, Abbeyhill, EH8 8DX, 0131 556 5100

TALBOT RICE GALLERY, University of Edinburgh, Old College, South Bridge, EH8 9YL, 0131 650 2211

Until September 28

Wael Shawky. Film installations explore histories that have shaped our world

OPEN EYE GALLERY, 34 Abercromby Place, EH3 6QE, 0131 557 1020

Until August 3

We're telling our own story:

INGLEBY GALLERY, 33 Barony Street, EH3 6NX, 0131 556 4441

Until September 13

Aubrey Levinthal. Mirror Matter. First major - paintings

HENDERSON ARTSHOP, 28a Raeburn Place, Stockbridge, EH4 1HN, 0131 332 7800, www.hendersonartshop.com, info@hendersonartshop.com

Framing prints materials

GALLERY TEN, 5 William Street, West End, EH3 7NG, 07957 855 426

EDINBURGH PRINTMAKERS WORKSHOP GALLERY, 23 Union Street, EH1 3LR, 0131 557 2479

August 1 - November 2

Robert Powell. Hall of Hours. Printmaking

PATRIOTHALL GALLERY @ WASPS, 1d Patriothall, off Hamilton Place, Stockbridge, EH3 5AY, 0131 226 7126

THE DUNDAS STREET GALLERY, 6a Dundas Street, EH3 6HZ, 0131 557 4050, www.dundas-street-gallery.co.uk, art@fasedinburgh.com

September 1 - 7

Chris Brook. In A Land So Still. Works

ROYAL BOTANIC GARDEN EDINBURGH, 20A Inverleith Row, EH3 5LR, 0131 552 7171

EDINBURGH COLLEGE OF ART, Lauriston Place, EH3 9DF, 0131 221 6109

DOVECOT STUDIOS, 10 Infirmary Street, EH1 1LT, 0131 550 3660

MORNING SIDE GALLERY, 94 Morningside Road, EH10 4BY, 0131 447 3041.

Until July 31

Peter Munro, Steven Lindsay, Andrew Thompson, Parastoo Ganjei, Mary Davidson, George Birrell, Patsy McArthur, Davy Brown, Nicola Wakeling, Robert Kelsey and many more. Summer Exhibition.

LEITH SCHOOL OF ART, 25 North Junction Street, EH6 6HW, 0131 554 5761, www.leithschoolofart.co.uk, enquiries@leithschoolofart.co.uk

July 14 - August 22

Harriet Hobday. Drawn in Japan. Features observational drawings

MUSEUMS COLLECTION CENTRE, 10 Broughton Market, EH3 6NU, 0131 556 9536

The centre houses the reserve collections of the city museums

THE VELVET EASEL GALLERY, 298 Portobello High Street, Portobello, EH15 2AS, 0131 629 1121, velveteasel.co.uk

COBURG HOUSE ART STUDIOS, 15 Coburg Street, EH6 6ET, 0131 553 2266, www.coburghouse.co.uk, exhibitions@coburghouse.co.uk

Until July 20

Bjorn Rune Lie, Eleni Kalorkoti, Louise Smurthwaite and Jon McNaught. Rabbie.

July 26 - August 31

Coburg Summer Exhibition.

September 5 - 14

Keith Mitchell. Painting and collage

EDINBURGH PALETTE, St Margaret's House, 151 London Road, Midlothian, EH7 6AE, 0131 661 1924, www.edinburghpalette.co.uk, info@edinburghpalette.co.uk

Until July 19

Life.

EDINBURGH ART SHOP, 129 Lauriston Place, EH3 9JN, 0131 229 1809, www.EdinburghArt-

In The Light

Summer Exhibition

Victoria Broxton
Stuart Buchanan
Jenny Colbeck
Andrew Gold
Moira Huntly
Gundra Nock
Ian Shields
Kanita Sim
Morag Stevenson



Pretty Birds all in a Row Oil by Victoria Broxton

eion stewart fine art

STONEHAVEN

Open: Tuesday - Friday 10:00am - 5:00pm, Saturday 10:00am - 4:00pm

55 Allardice Street, Stonehaven AB39 2AB

E: art@eionstewartfineart.com T: 01569 785606

www.eionstewartfineart.com



Our Summer Exhibition is on now!
Original Paintings, ceramics and glass
from Scotland and beyond.

59 High Street, North Berwick EH39 4HG

www.greensandblues.co.uk

Tel: 01620 890666

Scan here to browse
our website:



Visit: www.artwork.co.uk

The

Shop.com, info@EdinburghArt-Shop.co.uk

SCOTTISH SOCIETY OF ARCHITECT-ARTISTS, RIAS, 15 Rutland Square, EH1 2BE, www.ssaagallery.org.uk

COLLECTIVE GALLERY, City Observatory, 38 Calton Hill, EH7 5AA, 0131 556 1264

Until September 7

Mercedes Azpilicueta. Fire on the Mountain, Light on the Hill. Work

THE SALTIRE SOCIETY, 9 Fountain Close, 22 High Street, EH1 1TE, 0131 556 1836, www.saltiresociety.org.uk, saltire@saltiresociety.org.uk

STILLS GALLERY, 23 Cockburn Street, EH1 1BP, 0131 622 6200

August 1 - 30

Sian Davey. The Garden.

ISTITUTO ITALIANO DI CULTURA, 82 Nicolson Street, EH8 9EW, 0131 668 2232

Ongoing arts lectures, exhibitions & performances; Italian classes

L'INSTITUT FRANÇAIS D'ECSSE, West Parliament Square, EH1 1RF, 0131 285 6030

Until July 21

Art Deco Scotland: Design and Architecture in the Jazz Age. Decorative arts

WHITESPACE GALLERY, 76 East Crosscauseway, EH8 9HQ, 0781 451 4771, whitespace76.com

July 13 - 17

Roy Middleton. Artworks

MUSEUMS OF EDINBURGH, Huntly House, 142 Canongate, Royal Mile, High Street, EH8 8DD, 0131 529 4143

Until September 7

Nurture Through Nature with Children's Books.

GRAYSTONE GALLERY, 52 Hamilton Place, Stockbridge, EH3 5AX, 0131 226 3066

Until August 10

Ellis O'Connor and Kerry Souter. Mapped by Memory.

THE WRITERS' MUSEUM, Lady Stair's Close, EH1 2PA, 0131 529 4901

Until August 23

Disrupting the Narrative. Celebrates the lives of Robert Burns, Sir Walter Scott and Robert Louis Stevenson

RICCIO FRAME 'N' PRINT, 17 South Street, Dalkeith, Midlothian, EH22 1AH, 07753 801 422

AMBER ARTS, 78 Montrose Terrace, Abbeyhill, EH7 5DP, 0131 661 1167

Picture Framers, Art Gallery and Printmaking Studio

SUMMERHALL, 1 Summerhall, EH9 1PL, 0131 560 1580, www.summerhallarts.co.uk, info@summerhallarts.co.uk

July 26 - August 25

Sam Kissajukian. Paintings to sleep on. Comedy - explore the intersections of mental health, creativity, and self-perception

July 26 - September 21

Annual Group Exhibition.

LAURISTON CASTLE, 2a Cramond Road South, Davidson's Mains, EH4 5QD

Until August 23

Hannah Lavery, Jeda Pearl Lewis, Niall Moorjani and Shasta Ali. Disrupting the Narrative.

DOUBTFIRE GALLERY, 28 North West Circus Place, EH3 6TP, 07902 307147

QUEENSFERRY MUSEUM, 53 High Street, South Queensferry, West Lothian, EH30 9HP, 0131 331 5545

THE PEOPLE'S STORY MUSEUM, 163 Canongate, Royal Mile, EH8 8BN, 0131 529 4057

THE FINE ART SOCIETY, 6 Dundas Street, EH3 6HZ, 0131 557 4050

Until August 30

Kenny Hunter. Let's Forget. Display - installations

BENET'S GALLERY, 31 Montague Street, EH8 9QS, www.benethaughton.co.uk, benethaughton@gmail.com

August 4 - 22

Le Jardine de Madame Sourire.

& GALLERY, 3 Dundas Street, EH3 6QG, 0131 467 0618

Until July 30

Fragments. Works from our gallery artists

UPRIGHT GALLERY, 3 Barclay Terrace, EH10 4HP, 0131 221 0265

August 9 - 29

Imogen Alabaster. LOVE is the thing. Contemporary art

SCOTTISH ARTS CLUB, 24 Rutland Square, EH1 2BW, 0131 229 8157, www.scottishartsclub.com

NATIONAL WAR MUSEUM, Edinburgh Castle, EH1 2NG, 0300 123 6789

Until January 26 2026

Maps: Memories from the Second

World War.

HERIOT GALLERY, 20A Dundas Street, EH3 6HZ, 0131 557 5436

MUSEUM OF CHILDHOOD, 42 High Street, Royal Mile, High Street, EH1 1TG, 0131 529 4142

Until September 7

Nurture Through Nature with Children's Books.

3D/2D, Unit 3, Albion Business Centre, 78 Albion Road, EH7 5QZ, 0131 661 6600, www.3d2d.co.uk, info@3d2d.co.uk

July 28 - August 24

The West End Fair. Makers, designers and artists are selling only what they have produced

VISUALARTS SCOTLAND, Brodies Solicitors, Morrison Street, EH3 8BP, www.visualartsscotland.org, admin@visualartsscotland.org

HISTORIC ENVIRONMENT SCOTLAND, Longmore House, Salisbury Place, EH9 1SH, 0131 668 8600, www.historicenvironment.scot

Until September 20

Inspiring the Nation: 300 years of Libraries in Scotland.

THE EDINBURGH DRAWING SCHOOL, 13a Great King Street, EH3 6QW, 0131 556 0971, www.edinburghdrawingschool.co.uk, info@edinburghdrawingschool.co.uk

THE TORRANCE, 36 Dundas Street, EH3 6JN, 0131 556 6366

Until July 26

Lynn & Kerr Rodgie. Works

EDINBURGH PHOTOGRAPHIC SOCIETY, 68 Great King Street, EH3 6QU

SCOTTISH STORYTELLING CENTRE, 43-45 High Street, EH1 1SR, 0131 556 9579

DALKEITH COUNTRY PARK, Dalkeith Country Park, Via King's Gate, Dalkeith (Midlothian), EH22 1ST

SCOT ART, St Margaret's House, 151 London Road, EH7 6AE, 0131 661 1924

Until July 19

Life. Embark on a journey through art that resonates with the heart and soul, weaving the essence of life

Falkirk

THE PARK GALLERY AND CALLENDAR HOUSE, Callendar Park, FK1 1YR, 01324 503 789, artsandcrafts@falkirkcommunitytrust.org

THE WEST END GALLERY, 3-45 West Bridge Street, FK1 5AZ, 01324 613 100

D2 THE CREATIVE CENTRE, Lochlands Business Park, Larbert, FK5 3NS, 01324 555 500

A fantastic exhibition space and 14 artists studios and workspaces for rent or lease

Fife

KIRKCALDY MUSEUM & ART GALLERY, War Memorial Gardens, Abbotshall Road, Kirkcaldy, KY1 1YG, www.onlife.com/venues/kirkcaldy-galleries, kirkcaldy.galleries@onlife.com

Until October 1

John Bellamy, Ken Currie, Callum Innes and Alison Watt. Collecting the Contemporary.

Until November 23

WriteON, The Sequel. Creative writing group

Until December 13

Cast ON at Kirkcaldy Galleries. A fortnightly craft meet-up for all ages

CUPAR ARTS & HERITAGE PROJECT (CAHP), 5 Ashlar Park, Lovers Lane, Cupar, KY15 5AQ

EAST NEUK OPEN STUDIOS, East Neuk, www.eastneukopenstudios.org

MAISIE & MAC ART AND CONTEMPORARY CRAFT, 1 St. Catherine Street, Cupar, KY15 4LS, 01334 656 523, www.maisieandmac.com, info@maisieandmac.com

Paintings, prints, sculpture, textiles, ceramics, wood & metal from UK artists and makers

PITTENWEEM ARTS FESTIVAL, Festival Office, 47 High Street, Pittenweem, KY10 2PG, 01333 313 903, www.pittenweemartsfestival.co.uk, info@pittenweemartsfestival.co.uk

A celebration of the visual arts - taking place in galleries, homes, studios and public venues throughout Pittenweem

August 2-9

Pittenweem Arts Festival 2025.

WEEM GALLERY AND FRAMER, 16 High Street, Pittenweem, KY10 2LA, 01333 311535, www.

ArtWork

A new venture Popping up in Doune

WHEN PARTNERS Emma Yuill and Barry Jenkins visited Doune for the first time in 2023, they quickly realised it was the perfect place for them to fulfill a long standing dream. Artist Barry had been visiting the area to start a mural job accompanied by his partner Emma, and it was then that they stumbled upon the small, historic, pretty village of Doune, some 8 miles north west of Stirling on the River of Teith.

An artist for 30 years, having studied illustration in Glasgow, Barry has painted large scale murals in Scotland and around the world. Emma worked in travel for many years after university, then trained as a therapist in 2008, working in various therapy roles over the last 14 years.

“We had always wanted to move to the country and after discovering Doune things moved pretty quickly and we moved

from Glasgow to Doune in 2023. I’ve always been interested in art and unique and quirky gifts and secretly always wanted



to have an art and gift shop!” says Emma.

“We found a property in the village and 10 months later took on the shop premises in the centre of the village and began selling gifts and art prints. The space at the back of the shop was unused, and so the gallery space evolved

We both love art and have lots of connections with artists and makers from various backgrounds and styles across

Scotland.” “While the gift shop has been open for a year, we only opened the gallery space six months ago

and so appreciate this is early for any business and takes time for people to know we are here. We have collaborated with local Scottish artists, and are now building up a clearer picture of the direction we are looking to go in and the work we would like to exhibit”, explains Emma.

“The locals are very positive about the gallery, with several local sales and many return

visits to see what new work we have. As the gallery is now building momentum we are being visited by people from towns and villages further afield.

“Doune is very popular for tourists, further enhanced from the popularity of the series ‘Outlander’ and 50 years of Monty Python. Tourists tend to be looking to buy art prints related to Doune and Scottish landmarks rather than originals but we have had lots of lovely feedback about the space and the variety of artwork for sale.

“Looking forwards we would love the gallery to become a place to showcase established and emerging artists from an eclectic background of styles focusing on colour, vibrancy and energy which fits in with our ethos at Pop! Doune”, concludes Emma.

Pop! Doune - 1, The Cross, Doune, Perthshire FK16 6BG
FRANCES ANDERSON

Guide

weemgalleryandframer.co.uk, art@weemgalleryandframer.co.uk

August 2 - 9

Penelope Anstice, Jilly Ballantyne, Jem Bowden and Gwen Adair. Pit-tenweem Arts Festival 2025

THE GALLERY AT CULROSS POTTERY, Sandhaven, Culross, (near Dunfermline), KY12 8JG, 01383 882176, www.culrosspot-teryandgallery.com, thegallery@culrosspottery.co.uk

Jewellery, ceramics, art, textiles, wood, glass and gifts by local and national artists

FIRE STATION CREATIVE, Carnegie Drive, Dunfermline, KY12 7AN, 01383 721 564, www.firestationcreative.co.uk, sarah@firestationcreative.co.uk

Until July 29

Sonya Atlantova & Oleksandr Klymenko. Icons of War, Faces In Exile.

JENI FRAME, 07967 444 592, www.jeniframe.co.uk, jenid@gmx.com

Artwork framing - bespoke and restoration; Gilding service - traditional water and oil

CRAIL POTTERY, 75 Nethergate, The Square, Crail, KY10 3TX, 01333 451 212

Huge variety of handthrown stone-ware, terracotta, earthenware & raku

NO 13 GALLERY, 13 High Street, Newport on Tay, DD6 8AB, 07342929668, www.no13gallery.co.uk

August 23 - October 25

Allan Beveridge. A Retrospective

SCOTTISH FISHERIES MU-SEUM, St Ayles, Harbourhead, Anstruther, KY10 3AB, 01333 310 628

Until August 31

Forthlimes. Displays

GRISelda HILL POTTERY LTD, Kirkbrae, Ceres, Cupar, KY15 5ND, 01334 828 273

Wemyss Ware. Fife's famous hand painted pottery

KINGHORN GALLERY, King-horn, KY3 9RT, 01592 890 218

BALBIRNIE CRAFT CENTRE, Markinch, Glenrothes, Tayside, KY7 6NE, 01592 753 743

Alison & Roy Murray goldsmith-ing & jewellery; also at 20 Thistle Street, Edinburgh

FIFE FOLK MUSEUM, High Street, Ceres, KY15 5NF, 01334 828 180

Until October 31

Joanna Van Den Berg. Half Light. New work

OPEN STUDIOS NORTH FIFE, www.openstudioslife.co.uk

Artists & makers open their workspaces to visitors the first full weekend in May annually

CONTEMPORARY ARTS DUN-FERMLINE (CAD), Upper Mall, The Kingsgate, Dunfermline

Until August 31

In Tension Online Exhibition with Neuk Collective. Recent work

THE QUAY GALLERY, 33 High Street, Aberdeen, KY3 0SH, 01383 860 602

KIRKCALDY ART CLUB, Hot Pot Wynd, Dysart, Kirkcaldy, KY1 2TQ, 01592 203270

Painting classes, Monday 2-4pm and 7-9pm, Tuesday 7-9pm and Thursday 10-noon. Pottery classes, Monday 10-12pm and 7-9pm, Tues-day 7-9pm and Wednesday 2-4pm

ST. ANDREWS ART CLUB, 14c Argyle Street, St Andrews, KY16 9BP, www.standrewsartclub.co.uk

July 26 - August 3

Summer Exhibition. Original artwork for sale

PAGE POTTERY GALLERY, 49 High Street, Pittenweem, KY10 2PG, 01333 311402

GREENGATE GALLERY, Sandhaven, Culross, KY12 8JG, greengategallery@gmail.com

FOURSTICKS GALLERY, High Street, Falkland, KY15 7BZ, 07586 276 757, www.foursticks.co.uk, info@foursticks.co.uk

Bespoke framing in Fife's newest gallery

Until July 27

Beth S. Robertson. A Scottish Fair-tale. Wood engravings & linocuts

TATHA GALLERY, High Street, Newport on Tay, DD6 8AB, 01382 690800

Scottish contemporary art showing time honoured, established artists and emerging talents

CENTRAL FIFE ARTISTS' COL-LECTIVE

September 20 & 21

Open Studios 2025.

GALLERY, Achintore Road, PH33 6RQ, 012397 701 806, www.limetreefortwilliam.co.uk, info@limetreefortwilliam.co.uk

David Wilson Paintings

THE HIGHLAND BOOKSHOP, 60 High Street, PH33 6AH, www.highlandbookshop.com

60 High Street, Fort Willam PH33 6AH

BEN NEVIS DISTILLERY, Lochy Bridge, PH33 6TJ, 01397 702476

Glasgow

KELVINGROVE ART GAL-LERY & MUSEUM, Argyle Street, G3 8AG, 0141 287 2699

GALLERY OF MODERN ART (GOMA), Royal Exchange Square, G1 3AH, 0141 287 3050

Until August 31

John Akomfrah. Mimesis: African Soldier.

Until December 21

STEAM @ Various Libraries.

GLASGOW SCHOOL OF ART, 167 Renfrew Street, G3 6RQ, 0141 353 4589, www.gsa.ac.uk

April till August

Open Studios 2025. Visit https://www.gsa.ac.uk/study-at-the-gsa/open-studio for more information

Until August 9

Victoria Morton. Switch Track.

RGI KELLY GALLERY, 118 Douglas Street, G2 4ET, 0141 248 6386, www.royalglasgowinstitute.org, gallery@royalglasgowinstitute.org

GLASGOW ART CLUB, 185 Bath Street, G2 4HU, 0141 248 5210, www.glasgowartclub.co.uk, info@glasgowartclub.co.uk

Until August 9

Various artists. Glasgow Print Studio Publications.

THE GLASGOW GALLERY, 182 Bath Street, G2 4HG, 0141 333 1991, www.glasgowgallery.co.uk, info@glasgowgallery.co.uk

August 2 - 30

Julie Smith & Bridget Hunter. Joint exhibition inspired by the Scottish landscape

COMPASS GALLERY, 178 West Regent Street, G2 4RL, 0141 221 6370, www.compassgallery.co.uk, web@compassgallery.co.uk

July 12 - 21

Cabinet Paintings 2025. A selection of small works - paintings, drawings & prints

Until August 30

The Summer Show 2025.

GERBER FINE ART, 178 West Regent Street, G2 4RL, 0141 221 6370, www.gerberfineart.co.uk, mail@gerberfineart.co.uk

Gerber Fine Art founded in 1988 is the oldest established Fine Art Gallery in Glasgow.

July 22 - August 30

Various artists. The Summer Exhibi-tion 2025.

GLASGOW MUSEUMS, Culture and Sport Glasgow, 20 Trongate, G1 5ES, 0141 287 4350

Call or visit website for full details

ST MUNGO MUSEUM OF RELI-GIOUS LIFE AND ART, 2 Castle Street, Glasgow City, G4 0RH, 0141 276 1625

RIVERSIDE MUSEUM, 1 Bunhouse Road, G3 8DP, 0141 287 2720

Scotland's Museum of Transport and Travel

Until November 20 2030

Going Green The Drive for Energy Efficiency.

SCOTLAND STREET SCHOOL MUSEUM, 225 Scotland Street, G5 8QB, 0141 287 0500

CENTRE FOR CONTEM-PORARY ARTS (CCA), 350 Sauchiehall Street, G2 3JD, 0141 352 4900

MACKINTOSH CHURCH, CRM Society, Queen's Cross Church, 870 Garscube Road, G20 7EL, 0141 946 6600, www.crm.society.com, trish@crm.society.com

Ongoing

Mackintosh Guided Tours. Find out more about Charles Rennie Mackintosh

THE HUNTERIAN MUSEUM AND ART GALLERY, University of Glasgow, University Avenue, G12 8QQ, 0141 330 4221

MCLELLAN GALLERIES, 270 Sauchiehall Street, G2 3EH, 0141 565 4137

THE ANNAN GALLERY, 164 Woodlands Road, G3 6LL, 0141 332 0028

Until August 31

Various artists. Summer Stories and Collecting.

ROGER BILLCLIFFE GAL-LERY, 134 Blythswood Street, G2 4EL, 0141 332 4027

Until September 6

For Advertising...

Pottery Classes in Arbroath with Fran Marquis weekends & 5 day class



www.franmarquis.com
1G @springfieldclaystation

THE SCOTTISH GALLERY



VICTORIA CROWE
Decades

The Scottish Gallery | 16 Dundas Street | Edinburgh | EH3 6HZ
01315581200 | scottish-gallery.co.uk

Maisie & Mac
Gifts, Art & Contemporary Craft



Fabulous work from UK artists & makers plus quirky, ethically sourced gifts from elsewhere.
1-3 St Catherine St., Cupar, Fife.
www.maisieandmac.com

the
ceildh place
ESTABLISHED 1970

HOTEL
BUNKHOUSE
CAFE/BAR
RESTAURANT
MUSIC VENUE
BOOKSHOP
ART GALLERY

14 WEST ARGYLE ST
ULLAPOOL
IV26 2TY
01854612103



www.theceildhplace.com

E: a.d.gordon@outlook.com

The

Various artists. This is Scotland. Kalki Mansel and Ruth Shelley. Fluid Colour. Summer glass

EWAN MUNDY FINE ART, 01436 821 533
GLASGOW PRINT STUDIO GALLERY, 48 King Street, G1 5QT, 0141 552 0704
GLASGOW SCULPTURE STUDIOS, The Whisky Bond, 2 Dawson Road, G4 9SS, 0141 353 3708

PLATFORM, The Bridge, 1800 Westerhouse Road, G34 9JW, 0141 276 9696
Until August 30
Art Factory and Nu Gen. SPOT-LIGHT. Drawing, painting and sculpture

TRAMWAY, 25 Albert Drive, G41 2PE, 0141 276 0950
Until Oct 5
Solange Pessoa. Pilgrim Fields.

STREET LEVEL PHOTOWORKS, 48 King Street, Trongate 103, G1 5HD, 0141 552 2151
Permanent

Oscar Marzaroli's Gorbals. Display - 21 historical photographs of the Gorbals

GALLERY III, 25 King Street, Townhead, G1 5QZ, 0141 552 0704

WASPS ARTISTS STUDIOS, The Briggait, 141 Bridgegate, G1 5HZ, 0141 553 5890
Until August 11
Michelle Campbell. Eden.

Until August 16
Various artists. The Wonder Wall: Printmaking sans frontiers. Showcase of linocuts by 50+ artists across four continents

ARTERIES GALLERY, 185a Bath Street, G2 4HU, 0141 222 2830

PULP PAPER ARTS WORKSHOP, WASPS Factory, 77 Hanson Street, Dennistoun, G31 2HF, 0141 337 2842, www.paperartsworkshop.co.uk, alison.paperprintbook@virgin.net

SCOTTISH ARTISTS' BENEVOLENT ASSOCIATION, Second Floor, 5 Oswald Street, G1 4QR, scottishartistsbenevolentassociation.co.uk
Empowered by the TOD Endowment Fund to provide holidays in Scotland for artists (resident in Scotland for at least two years) who are experiencing

THE ROYAL SCOTTISH SOCIETY OF PAINTERS IN WATERCOLOUR (RSW), 5 Oswald Street, G1 4QR, 0141 248 7411, www.rsw.org.uk, info@rsw.org.uk
The Royal Scottish Society of Painters in Watercolour

LILLIE ART GALLERY, Station Road, Milngavie, G62 8BZ, 0141 956 5536, www.edlc.co.uk/heritage-arts/exhibitions/lillie-art-gallery-exhibitions
Until August 21
Alastair Strachan. City Building.

Young People's Art.

PEOPLE'S PALACE, Glasgow Green, G40 1AT, 0141 550 0892
UNLIMITED STUDIOS, 25 Hyndland Street, G11 5QE, 0141 338 6052

ART FORUM, 50 Station Road, Milngavie, G62 8AB, 0141 956 6765

NATIONAL MUSEUM OF RURAL LIFE, Wester Kittochside, Philipshill Road, East Kilbride, G76 9HR, 0300 123 6789

Until January 26 2026
Maps: Memories from the Second World War. Explores the creation and use of maps

KELVIN HALL, Argyle Street, G3 8AW, 0141 276 1450
Until December 3

Geo Natter. Find out more about Scotlands geo-heritage

HOUSE FOR AN ART LOVER, 10 Dumbreck Road, G41 5BW, 0141 353 4770

HILLHEAD LIBRARY, Byres Road, G12 8AP, 0141 276 1617
EAST KILBRIDE ARTS CENTRE, 51-53 Old Coach Road, East Kilbride, G74 4DU, 01355 261 000, www.slleisureandculture.co.uk/info/48/east_kilbride_arts_centre

Until August 16
Various artists. Brush and Beyond.

August 7 - 31
East Kilbride Camera Club exhibition.

AULD KIRK MUSEUM, Cowgate, Kirkintilloch, East Dunbartonshire, G66 1HN, 0141 578 0144

PATRICIA FLEMING GALLERY, Oxford House, 4 Oxford Lane, G5 9ER, 07968 066 708
September 13 - October 18
Tessa Lynch. Solo

THE BURRELL COLLECTION,

Pollok Country Park, 2060 Pollokshaws Road, G43 1AT, 0141 287 2550

Until Oct 26
Ciara Phillips. Undoing it. Woodcuts, etchings and screen-prints
GOVAN PROJECT SPACE, 249 Govan Road, G51 1HJ
THE MITCHELL LIBRARY, North Street, G3 7DN, 0141 287 2999

THE ALCHEMY EXPERIMENT, 157 Byres Road, G12 8TS
THE GLASGOW ROYAL CONCERT HALL, 2 Killermont Street, G2 3NW, 0141 353 8000

Inverness

INVERNESS MUSEUM & ART GALLERY, Castle Wynd, IV2 3EB, 01463 237114
CASTLE GALLERY, 43 Castle Street, IV2 3DU, 01463 729 512, www.castlegallery.co.uk, info@castlegallery.co.uk

Until August 31
Summer Mixed Exhibition. Featuring paintings, handmade prints, jewellery and crafts

September 5 - 27
Louise Scott. Navigating New Spaces. New copper plate etchings and collages

HIGHLAND PRINT STUDIO, 20 Bank Street, IV1 1QU, 01463 718 999, www.highlandprintstudio.co.uk, info@highlandprintstudio.co.uk

Until August 2
The Big Print Fundraiser. Brings together over 800 handmade prints

EDEN COURT THEATRE, Eden Court, Bishops Road, IV3 5SA, 01463 234 234

PICTURE THIS, 18 Church Street, IV1 1EB, 01463 238823
SCOTTISH FLAIR ART GALLERY, 11 Bank Street, IV1 1QY, 01463 248 500

Inverness-shire

1896 GALLERY, Deshar Rd, Boat of Garten, PH24 3BN, 01479 831 111, www.1896gallery.com

Ongoing
Various artists. Scottish Landscape Art Exhibition.

CARRBRIDGE ARTISTS' STUDIO, Main Street, Cairngorms National Park, Carrbridge, PH23 3AS, 01479 841 328, www.carrbridgestudios.com, alice@carrbridgestudios.com

Artwork & Studio Ceramics by resident artists Jeff, Alice & Amy Buttress.

LOCH SHIEL SPRING FESTIVAL, c/o Station Cottage, Glenfinnan, PH37 4LT, 01397 722 334
GLENFINNAN STATION MUSEUM, Station Cottage, Glenfinnan, PH37 4LT, 01397 722 295
THE LAUNDRY GALLERY, Aviemore, PH22 1ST

Isle of Arran

STUDIO 4, Shore Road, Lamlash, KA27 8LA, 01770 600 919
Lively contemporary art

Isle of Bute

MOUNT STUART, Mount Stuart, PA20 9LR, 01700 503 877
Until August 31
Linder - (See editorial p7 this issue)

Isle of Cumbrae

HUNTER SAVILLE CUMBRAE STUDIO AND GALLERY, 14 Guildford Street, Millport, KA8 0AE, 07748 258 638

Isle Of Harris

SKOON ART CAFE, 4 Geocrab, HS3 3HB, 01859 530 268
Original art, home made cakes and puddings, leaf and herbal teas, coffee plus traditional music.

Isle of Islay

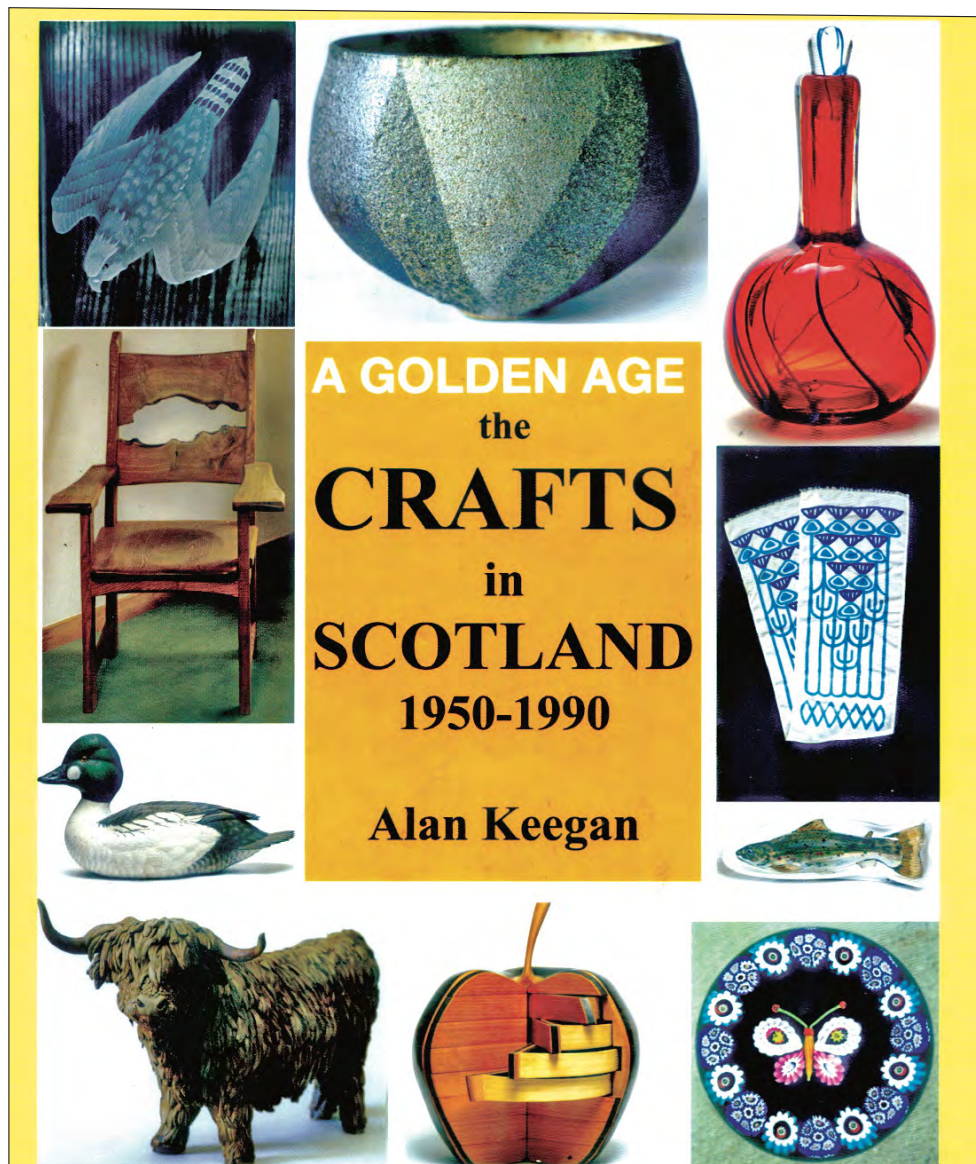
THE GALLERY, Bowmore Distillery Visitor Centre, School Street, Bowmore, PA43 7JS, 01496 810 441
Regular exhibitions by local artists

Isle of Lewis

AN LANNTAIR, Town Hall, Kenneth Street, Stornoway, HS1 2DS, 01851 703 307
Until August 31
Kaye McFadyen. Where the Ocean Remembers the Sky.

July 12 - August 31
Ken Currie. An Turas: The Crossing.

ArtWork



A GOLDEN AGE
the
CRAFTS
in
SCOTLAND
1950-1990

Alan Keegan

FOR CRAFTS IN SCOTLAND OFFER SEE PAGE 3

SANDBANK STUDIO

Wide range of original paintings by **Duncan Currie** Old Pier Rd
Broadford Isle of Skye
Tel: 01471 822064
duncan@sandbank.plus.com
www.duncancurrie.co.uk

iART SUPPLIES



WE'VE MOVED!
NEW LOCATION:
UNIT F
HAWKHILL COURT
DUNDEE DD1 4JG
0330 223 0922

iARTSUPPLIES.co.uk

SUNSHINE & SHADOWS

On now - summer exhibition featuring artists from the Cairngorms



r The Square
Grantown-on-Spey
Open Tues - Sat, 10am-5pm
www.speybankstudio.co.uk



resipole studios
FINE ART GALLERY

www.resipolestudios.co.uk
loch sunart | acharacle | argyll | scotland | ph36 4hx
image: sun-light by kirstie cohen

HARBOUR VIEW GALLERY, Port of Ness, HS2 0XA, 01851 810 735
Original paintings and prints by Anthony J Barber

MORVEN GALLERY, Upper Barvas, Outer Hebrides, HS2 0QX, 01851 840 216

Changing exhibitions of original art, crafts, photography & tapestry weaving

Isle of Skye

DANDELION DESIGNS, Stein, Waternish, IV55 8GA, 01470 592 218, www.dandelion-designs.co.uk
SANDBANK STUDIO, Old Pier Road, Sandbank, Broadford, IV49 9AE, 01471 822 011, www.duncancurrie.net, duncan.currie@tiscali.co.uk

Wide range of original paintings by Duncan Currie and works by Pam Carter and other well-known Scottish artists

EDINBANE POTTERY, Edinbane, Portree, IV51 9PW, 01470 582 234

GALLERY AN TALLA DEARG, Ornsay, Sleat, IV43 8QR, 01471 833 439, www.eileaniamrain.co.uk, hotel@eilean-iarmain.co.uk
July 18 - August 13
Jim Woodman.

August 15 - October 1
Derek Robertson.
DIANA MACKIE, 10 Borreraig Park, Dunvegan, IV55 8ZX, 01470 511 795

Working studio and gallery -
ORBOST GALLERY, Half Bolvean, nr Dunvegan, IV55 8ZB, 01470 521 207

RAVEN PRESS GALLERY, Colbost, Dunvegan, IV55 8ZS, 01470 511 748

Working studio of engraver Kathleen Lindsley

Kelso

THE VENNEL GALLERY, Denise Playfair, 11 Bridge Street, TD5 7HT, 01573 224 003, vennelgallery@live.co.uk

Besposke Picture Framer. Animal portrait commissions. Art and needlework supplies

KELSO POTTERY, The Knowes, 100 metres behind Kelso Abbey, TD5 7BH, 01573 224 027
Mugs, jugs, bowls & 'Time Tablets' fired in the Kelso Pit Kiln

Kingussie

IONA GALLERY, Duke Street, PH21 1JG, 01540 664 535, www.theionagallery.com

Until July 21
Various artists. Textile Exhibition.

July 31 - August 18
Various artists. SBSA Summer Exhibition.

August 21 - September 1
Various artists. Handmade in the Highlands.

Kirkcudbright

KIRKCUDBRIGHT GALLERIES, St Mary Street, DG5 4AQ, 01567 331 276, www.kirkcudbrightgalleries.org.uk

Until July 28
Various artists. Scottish Landscape Awards 2025.

July 26 - October 19
Dorothy Johnstone, Vera Holme and Anne Finlay. The Story of a Fairy Family. Artefacts

HARBOUR COTTAGE GALLERY, Castlebank, Kirkcudbright, DG6 4LB, 01557 330 073, www.harbourcottagegallery.org.uk

July 13 - 26
Gabrielle Reynolds, Linda Irving, Amanda Hayler, Jane Fraser, Hannah Percival. Galloway Connections.

August 11 - 23
Sandra Jaekel. Bothyart.

August 25 - September 6
Ruth Clayton, Stuart Gray, Sue Bibby. Echoes.

September 8 - 20
Caroline Hone. 1949-2024 - A Retrospective.

PROFESSIONAL ARTISTS POP UP SHOP, 67 St Mary's Street, DG6

Applied Art from 20 artists living and working in Dumfries and Galloway

HIGH ST. GALLERY, 84 High Street, Kirkcudbright, DG6 4JL, 01557 331 660

THE WHITEHOUSE GALLERY, 47 St Mary Street, Kirkcudbright, DG6 4DU, 01557 330 223
Until August 30
Various artists. Summer Exhibition.

THE STEWARTRY MUSEUM,

47 St Mary's Street, Kirkcudbright, DG6 4DU, 01557 330223
TOLBOOTH ART CENTRE, High Street, Kirkcudbright, DG6 4JL, 01557 331 556

THE FAED GALLERY, 56 High Street, Gathouse of Fleet, DG7 2HP, 01557 814 458

CORNERWAYS STUDIO/GALLERY, 7 Selkirk Road, Kirkcudbright, DG6 4BL, 01557 331 640, www.cornerwaysart.co.uk/studio/, enquiry@cornerwaysart.co.uk

Miniature paintings & larger works in oil, pastel & watercolour by Jane B Gibson

KIRKCUDBRIGHT ARTS & CRAFTS TRAIL

ARTISTS & MAKERS POP-UP SHOP, Mill on the Fleet Visitor Centre, 65 High Street, Gathouse of Fleet, DG7 2HS, 01556 814 099

Stocked and staffed by local professional designer makers

JOSHUA MILES ART STUDIO, 57 Castle Street, DG6 4JD
Art studio open to the public

Lanarkshire

IRONWORKS GALLERY, Summerlee Heritage Park, Heritage Way, Coatbridge, ML5 1QD, 01236 431 261

Call for details
SUMMERLEE MUSEUM, Heritage Way, Coatbridge, ML5 1QD, 01236 638460

KILN SERVICES, Unit 8/11, Whistleberry Park Industrial Estate, Hamilton, ML3 0ED, 01698 822032, www.kiln-services.co.uk, sales@kiln-services.co.uk

BIGGAR AND UPPER CLYDESDALE MUSEUM, 156 High St Biggar, Biggar, ML12 6DH, 01899 221 050, www.biggar-museum-trust.co.uk, info@biggar-museum-trust.co.uk

Until September 28
Ian Hamilton Finlay. Images from the Arcadian Dream Garden.

DOUGLAS DAVIES GALLERY, Loanfoot, Skirling, Biggar, ML12 6HD, 01899 860254, www.douglas-daviesrsw.co.uk, www.douglas-daviesrsw.co.uk/contact.html

Linlithgow

THE LINE GALLERY, 238 High Street, EH4 7ES, 01506 670 268

Liverpool

TATE LIVERPOOL, Albert Dock, L3 4BB, 0151 702 7400
Until September 14

Christine Sun Kim, Sheila Hicks, Fred Wilson and Mounira Al Solh, Ceydet Ere, Antonio Jose Guzman & Iva Jankovic and Hadassa Ngamba. Bedrock Liverpool Biennial 2025.

BLUECOAT ARTS CENTRE, School Lane, L1 3BX, 0151 709 5689

Until September 14
Liverpool Biennial 2025.

LADY LEVER ART GALLERY, Lower Road, Port Sunlight Village, Wirral, CH62 5EQ, 0151 478 4136

THE WALKER, William Brown Street, L3 8EL, 0151 478 4199

Livingston

HOWDEN PARK CENTRE, Arts Services, West Lothian Council, Howden Park Centre, EH54 6AE, 01506 777 666

London

THE BRITISH MUSEUM, Great Russell Street, Bloomsbury Square, WC1A 2RJ, 0207 323 8181

Until September 7 (Closed June 30 - July 4)
Hiroshige: artist of the open road.

Until October 19
Explores the origins of Hindu, Jain and Buddhist sacred art

NATIONAL MARITIME MUSEUM, Romney Road, Greenwich, SE10 9NF, 0208 858 4422

Until August 11
Astronomy Photographer of the Year exhibition. F

Until January 4 2026
Pirates. Explores the perception of piracy in popular culture

THE NATIONAL GALLERY, Trafalgar Square, WC2N 5DN, 0207 747 2885

Until August 17
José Velasco. A View of Mexico. Paintings

THE BARBICAN, Silk Street, EC2Y 8DS, 0207 638 4141
Until August 10
Huma Bhabha and Giacometti.

For Advertising...

E: a.d.gordon@outlook.com

The

Encounters: Giacometti.
Until August 31
Feel the Sound.
TATE MODERN, Bankside, SE1 9TG, 0207 887 8008
Until August 31
Leigh Bowery! A fresh insight into the creative scenes in London, New York and beyond
TATE BRITAIN, Millbank, SW1P 4RG, 0207 887 8888
Until August 25
Ed Atkins.
BANKSIDE GALLERY, 48 Hopton Street, (Next to Tate Modern), SE1 9JH, 0207 928 7521
Until July 27
Quentin Blake. Ninety Drawings.
NATIONAL PORTRAIT GALLERY, St Martin's Place, WC2H 0HE, 0207 306 0055
Until September 7
Jenny Saville. Jenny Saville: The Anatomy of Painting.
Until October 12
Herbert Smith Freehills Kramer Portrait Award 2025.
HAYWARD GALLERY, South Bank Centre, Belvedere Road, SE1 8XX, 08703 800 400
July 12 - August 31
Ghazaleh Avarzamani and Ali Ahadi. Freudian Typo.
July 12 - August 31
Yoshitomo Nara.
MALL GALLERIES, The Mall, near Trafalgar Square, SW1Y 5AH, 0207 930 6844, www.mallgalleries.org.uk, info@mall-galleries.com
July 23 - 26
Minerva 2025. Showcasing traditional and avant garde Japanese art
August 5 - 10
Italy Through the Lens. A photography exhibition illustrating the beauty of Italy
August 26 - 31
Swanfall Art. Fables. Swanfall Art Annual Exhibition 2025
GREEN & STONE OF CHELSEA, 251-253 Fulham Road, SW3 6HY, 0207 352 0837, www.greenandstone.com, mail@greenandstone.com
IMPERIAL WAR MUSEUM, Lambeth Road, SE1 6HZ, 0207 416 5320
Until November 2
Unsilenced: Sexual Violence in Conflict.
THE QUEEN'S GALLERY, Buckingham Palace, SW1A 1AA, 0207 766 7301
THE ROYAL ACADEMY OF ARTS, Burlington House, Piccadilly, W1J 0BD, 0207 300 8000
Until August 17
Summer Exhibition 2025.
GUILDHALL ART GALLERY & ROMAN LONDON'S AMPHITHEATRE, Guildhall Yard, Off Gresham Street, EC2V 5AE, 0207 332 3700
MUSEUM OF LONDON, 50 London Wall, EC2Y 5HN, 0207 001 9844
Until March 1 2026
Secrets of the Thames. Features over 350 mudlarked objects
DULWICH PICTURE GALLERY, Gallery Road, Dulwich Village, SE21 7AD, 0208 693 5254
Until October 19
Rachel Jones. Gated Canyons. A new body of work
GREENWICH PRINTMAKERS GALLERY, 1a The Market, Greenwich, SE10 9HZ, 0208 858 1569
Original Artist Prints at affordable prices
CONTEMPORARY SCULPTURE GALLERIES, 108 Old Brompton road, SW7 3RA, 0207 373 8615
At Royal British Society of Sculptors
VICTORIA AND ALBERT MUSEUM, Cromwell Road, SW7 2RL, 0207 942 2000
Until July 21
Arts of the Islamic World.
CONTEMPORARY APPLIED ARTS, 2 Percy Street, W1T 1DD, 0207 436 2344
OPERA GALLERY, 134 New Bond Street, W1S 2TF, 0207 491 2999
LA GALLERIA PALL MALL, Unit 30 , Royal Opera Arcade, SW1Y 4UY, 0207 930 8069
SAATCHI GALLERY, Duke Of York's HQ, King's Road, SW3 4RY, 020 7811 3081
Until July 27
RHS Botanical Art & Photography Show 2025.
Until August 31
Flowers - Flora in contemporary art & culture.
ALEXANDRA PALACE, Alexandra Palace Way, N22 7AY, 0208 365 2121

The People's palace. A centre of music, sport and events for over 130 years
HALCYON GALLERY, 144-146 New Bond Street, W1S 2PF, 0207 100 7144
ESPACIO GALLERY, 159 Bethnal Green Road, E2 7DG July 22 - 27
Euphoria of Colours.
August 25 - September 7
The International Art Prize.
PIANO NOBILE, 129 Portland Road, Holland Park, W11 4LW, 020 7229 1099
July 27
Grayson Perry. InSight No. 174.
Until August 1
David Bombe. Soutine and British Painting.
HORNSEY TOWN HALL ARTS CENTRE, The Broadway, Crouch End, N8 9JJ
Crouch End Open Studios

Moray

MORAY ART CENTRE, The Park, Findhorn, IV36 3TA, 01309 692 426, www.morayartcentre.org, info@morayartcentre.org
July 27 - August 29
Georgia Rose Murray, Helen A. Noyce (Cole), Celia Forestal Smith, Jonathan Shearer, Allan Davies, Ginny Elston, Kenneth Le Riche, Jill Welham and Susie Wilson. Summer School Tutors' Exhibition.
THE GALLERY, Elgin Library, Cooper Park, Elgin, IV30 1HS, 01343 562 600
Exhibitions by local artists and craftspeople
LEAP STUDIO & GALLERY, 17 Victoria Street, Craigellachie, Aberlour-on-Spey, AB38 9SR, 01340 881226
Unique display of whisky related art
SPEY BANK STUDIO, 1 The Square, Grantown-on-Spey, PH26 3HG, www.speybankstudio.co.uk, info@speybankstudio.co.uk
Gallery, shop, studio and pottery open in the Cairngorms. Classes running all year round
LOGIE STEADING ART GALLERY, Logie, Dunphail, Forbes, IV36 2QN, 01309 611 378
A'NSIDE, Main Street, Tomintoul, AB37 9EX, 01479 872 074
THE BOOKMARK, 34 High Street, Grantown-on-Spey, PH26 3EH, 01479 873433
FINDHORN BAY ARTS, 86 High Street, Forbes, IV36 1NX, 01309 673137

Morayshire

THE HIGH ST MERCHANTS, 74 High Street, Grantown-on-Spey, PH26 3EL, 01479 872246, www.thehighstmerchants.com, thehighstreetmerchants@gmail.com
Café - Gallery - Bar. Beautiful selection of Fine Art, crafts & Photography, home baking, coffee, lunch & evening meals Friday & Saturday

Nairn

NAIRN BOOK AND ARTS FESTIVAL, 53 King Street, IV12 4NP, 01467 451 804, www.nairnfestival.co.uk, enquiries@nairnfestival.co.uk
August 30 - September 7
Nairn Book and Arts Festival. An annual celebration of literature, art, music, and drama in the Scottish Highlands
GREENTREE ARTS STUDIO, The School House, Ferness, Nairnshire, IV12 5UP, 01309 651 319
Studio spaces, workshops and art therapy
ORIGINAL SPINNING ARTS STUDIO, 32 Park Street, IV12 4PN, 01667 454004, susiaalexander123@btinternet.com
Innovative textile art by former Royal ballerina

Northumberland

MARY ANN ROGERS, West Woodburn, Hexham, NE48 2SE, 01434 270 216, www.marogers.com, info@marogers.com
Vibrant wildlife and landscape painting, prints, cards and luxury gifts.
SHIRE POTTERY, Miller's Yard, Prudhoe Street, Alnwick, NE66 1UW, 01665 602 277
WESTSIDE CONTEMPORARY FINE ART, Westside Farm, Newton, Stocksfield, NE43 7TW, 01661 843 778
THE SILL: NATIONAL LANDSCAPE DISCOVERY CENTRE, Bardon Mill, Hexham, NE47 7AN, 01434 341200
GALLERY FORTY5, 45 Main

ArtWork

At Glasgow's Compass Gallery



Neil MacPherson: A Man Trying to Win the Affections of a Beautiful Woman

1896 EIGHTEEN NINETY SIX GALLERY

Summer Exhibition

With Sarah Anderson and Rona Kant



Open 10- 5PM , Wednesdays to Saturdays

See our artwork at 1896gallery.com/artists 01479831111

artWORK



SHOP ONLINE
UK MAIL ORDER
& LOCAL DELIVERIES
www.EdinburghArtShop.co.uk

Guide

Street, Felton, Morpeth, NE65 9PP, www.feltongallery45.co.uk, feltongallery45@gmail.com
Art Studios, coffee, gifts
Until July 31
Various artists. Wild Northumbria.
August 2 - September 25
David Crawford. Arcane Landscapes. Photography
GALLERY @ NO.6, 6 High Street, Wooler, NE71 6BY, 01668 282 443, www.galleryatno6.co.uk
Art, Antiques and Creativity on Wooler's High Street
Until July 26
Jane Murray. Foliage & Flowers.
REPUBLIC GALLERY, The Kings Head, 85 Bridge Street, Blyth, NE24 3AE, www.republic-gallery.co.uk, info@republic-gallery.co.uk

Orkney

WATERFRONT GALLERY, 128 Victoria Street, Stromness, KW16 3BU, 01856 850 644, www.waterfrontgallery.co.uk
In the shop: Orkney silver, pottery, knitwear and gifts. In the Back Room Local paintings, prints and designer crafts
PIER ARTS CENTRE, Victoria Street, Stromness, KW16 3AA, 01856 850 209
Until August 2
George Robertson. A Great Stromnessian - The Art of Provost.
Until August 16
Island Voices.
Until September 13
Winifred Nicholson & Andrew Cranston. Dreams of the everyday.
Until October 31
Extending the ideas of the European avant-garde to Britain
Until November 1
Roger Ackling. SUNLIGHT.
THE GALLERY, Pierowall, Westray, KW17 2BZ, 01857 677 770
Ongoing: Contemporary art of Westray
YELLOWBIRD GALLERY, Chocolate Cottage, Birsay, KW17 2LT, 01856 217 360
Celebration of birds through drawings, paintings and carving by sculptor John Thompson and artist Lesley Murdoch
JANE GLUE ART, Judith Glue and the real food cafe, 25 Broad Street, Kirkwall, KW15 1DH, 07523 175 084
A selection of original art, prints and other products for sale produced by Orkney artist Jane Glue
THE LOFT GALLERY, ST Margarets Hope, KW17 2SL
NORTHLIGHT GALLERY, Graham Place, Stromness, KW16 3BY, 01856 851 194
Non-profit white wall exhibition space with a sink, sofa bed, shower and cooking facilities available for self-funded Artist Residencies
July 14 - 27
Art collective. With a musical composition by Brian Cromarty
BILL MCARTHUR SEASCAPE ART, 3 Lettan, Sanday, KW17 2BP

Boo Vake
modern craft, textiles & homewares

Boo Vake 5 Watergate Perth PH1 5TF
www.boovake.co.uk | Instagram | Facebook

Paisley

PAISLEY MUSEUM, 60 High Street, Town Centre, PA1 2BA, 0141 889 3151, www.rcimagined.paisleymuseum.org
Former Art Galleries, home of the Paisley Art Institute, are currently planned to be used as museum space. Check website for more details
PAISLEY ART CENTRE, New Street, PA1 1EZ, 0141 887 1010
Regular performances and events, call for listings
PAISLEY ART INSTITUTE, 18.Oakshaw Street, East Paisley, PA1 1TJ, www.paisleyartinstitute.org, secretary@paisleyartinstitute.org
Annual Exhibition attracts work from artist members and open entrants across the length and breadth of the UK
THE ART DEPARTMENT, 9-11 Causeyside Street, PA1 1UW, 0141 847 1122, www.art-department.org, contact@art-department.org
August 30 - November 15
(Deadline for Submission: May 31)
The Big Art Show - bigartshow2025.artcall.org.
Peebles
TWEED ART, 1 Biggiesknowe, EH45 8HS, 01721 720 246, www.tweedart.co.uk, info@tweedart.co.uk
Framing studio artists and craftmakers gallery

Ongoing
Various artists. Artists Gallery. Features a selection of original art, predominantly from local artists
TWEEDDALE MUSEUM AND GALLERY, Chambers Institution, High Street, EH45 8AG, 01721 724 820, www.liveborders.org.uk
From 2nd November 2024
Ours! Works from the Permanent Collection.
July 24
Emii Alrai, Iman Dattoo, Remi JabA, ecki, Radovan Kraguly, Zeljko Kujundzic, Leo Robinson, and Amba Sayal-Bennett., Travelling Gallery: Seedlings.
Until August 30
EDGE textile artists Scotland. Text - Texture - Textiles. John Buchan and 25 Years of EDGE Textile Art
Until August 30
Tweeddale's Treasures. Spotlights key events in local history through unique objects in the collection
MOY MACKAY GALLERY, 17 Northgate, EH45 8RX, 01721 722116
Contemporary Art and Craft from Scotland
PEEBLES CRAFT CENTRE, Newby Court, EH45 8AG, 01721 722875
Craft centre with 4 studios
TRAQUAIR HOUSE, Traquair House, Innerleithen, EH44 6PW, 01896 830 323
DAWYCK BOTANIC GARDEN, Stobo, EH45 9JU, 01721 760254
Until October 26 (Sundays only: 2-3pm)
Guided Tours at Dawyck. Explore our collections
SOLO GALLERY, 51 High Street, Innerleithen, EH44 6HD, 07495 710 687
A fresh new space for contemporary fine arts, ceramics, glass and jewellery

Perth

PERTH ART GALLERY, 78 George Street, PH1 5LB, 01738 632 488, www.culturepk.org.uk/museums-galleries/, museum@culturepk.org.uk
From July 25
Millais in Perthshire. A private collection of rarely-seen artworks and personal belongings of John Everett Millais and his Perth-born wife, Effie Gray
Until August 31
Macbeth.
Until February 28 2026
Glass.
PERTH MUSEUM, St John's Place, PH1 5SZ
Until August 31
Macbeth.
FRAMES GALLERY, 10 Victoria Street, PH2 8LW, 01738 631 085, www.framesgallery.co.uk, info@framesgallery.co.uk
Ongoing
Various artists. Summer 2025 Collection.
THE BARN GALLERY, The Bield, Blackruthven, Tibbermore, PH1 1PY, 01968 677854, www.bieldatblackruthven.org.uk/barn-gallery, info@bieldatblackruthven.org.uk
Check website for more information
August 30 - September 14
Open Studio Showcase.
PERTHSHIRE AGRICULTURAL SOCIETY, 26 York Place, PH2 8EH, 01738 623 780, www.perthshow.co.uk, secretary@perthshow.co.uk
August 1 & 2
Perth Show.
BOO VAKE (BUTH BHEAG), 5 Watergate, PH1 5TF, 01738 442263, www.boovake.co.uk, mail@boovake.co.uk
Original gifts from artists, makers & designers from Scotland and the UK
L CHRISTIE CAMPBELL FINE ART, Rait Village Antique Centre, Rait, PH2 7RT, 01821 670 379
Ongoing exhibition of 19th-21st century oils, watercolours, etchings and prints, jewellery by Chris Lewis and Assassin
THE RUTHVEN GALLERY, 90 High Street, Auchterarder, PH3 1BJ, 01764 664 233
Contemporary Art and Framing
JARDINE GALLERY & WORKSHOP, 45 New Row, PH1 5QA, 01738 621 836
THE PERTHSHIRE ART ASSOCIATION, 5 Westhill, PH1 1DH, 07720 959626, www.perthshireartassociation.org, maggiejwallace@yahoo.co.uk
Until July 27
Fiona Bayliss, Jane Drysdale, Louise McLaren and Ruth Anderson. POS Summer Show.
CITY CONTEMPORARY ART, 20 Charlotte Street, PH1 5LL, 01738



'KIRKCUDBRIGHT ARTISTS' TOWN
Jane B. Gibson RMS
www.cornerwaysart.co.uk • jane@cornerwaysart.co.uk
Tel: 01557 331640
Any subject considered

Boo Vake
modern craft, textiles & homewares



Boo Vake 5 Watergate Perth PH1 5TF
www.boovake.co.uk | Instagram | Facebook

Studio 44
— ART GALLERY —

EXPRESSIONS & INTERPRETATIONS

Bridget Hunter, Jim Wyllie,
Julie Smith, Madhumati Manda,
Eileen Anderson and Laura Queen

15 JULY-3 AUGUST
TUES-SAT 11 AM-5 PM

44 Boyd Street, Largs, Ayrshire KA308LE
www.studio44gallery.co.uk



FOURSTICKS
framing /// gallery
High Street, Falkland
07586276757 //// foursticks.co.uk
@foursticksgallery

E: a.d.gordon@outlook.com

For Advertising...

The

ArtWork

Guide

440888

Until August 23
David Page, Jonathan Mitchell,
Martin Irish, Fiona Haldane, Nael
Hanna, Fiona Matheson, Kris Mc-
Kinnon, Ewan John, Graham Wands,
Andrew Thomson and Tom Barron.
CCA Summer Show.

Perthshire

BIRNAM ARTS & CONFER-
ENCE CENTRE, Station Road,
Birnam, Dunkeld, PH8 0DS, 01350
727 674, www.birnamarts.com
Until July 27
Jack Ravi. Reclaiming Shadows.
PERTSHIRE OPEN STUDIOS,
Kinross, KY13, [www.perthshire-
openstudios.com](http://www.perthshire-
openstudios.com)
All year round
Creative Trail.

July 12 - August 3
Summer Show.
September 6 - 14
Open Studios 2025.
August 30 - September 14
Open Studios Showcase.

THE ATHOLL GALLERY, 6
Atholl Street, Dunkeld, PH8 0AR,
01350 728 855

FORTINGALL ART, Molteno
Hall, (8 miles W. of Aberfeldy
off B846), Aberfeldy, PH15 2LL,
01887 830 254

July 12 - 27
Annual Fortingall Exhibition
DUNBLANE MUSEUM, The
Cross, Dunblane, FK15 0AQ,
01786 825 691

Until July 31
Unbroken Threads. Embroidery &
Textile Art by Stirling Stitchers
August 4 - 29
Paul Eames. The Things About Us.
Paintings, drawings and construc-
tions

BLAIRGOWRIE AND RATTRAY
ARTS WEEK, Rattray, Blairgow-
rie, PH10 6AS, www.itsbraw.scot,
info@itsbraw.scot
August 17 - 24
Rattray Arts Festival. Over 30 artists
- featuring Rhona Kirkpatrick

August 1 - 31
Blairgowrie & Rattray Arts for
Wellbeing - It's BRAW!
GOLDFINCH GALLERY COM-
RIE, Malloch Buildings, Drum-
mond Street, Comrie, PH6 2DS
Contemporary Arts Collective

Pitlochry

PITLOCHRY FESTIVAL THEA-
TRE, Port-Na-Craig, PH16 5DR,
01796 484 626

JOHN MUIR TRUST - WILD
SPACE, Tower House, Station
Road, PH16 5AN, 01796 484975

Renfrewshire

CRAFTS OF CALDER GAL-
LERY AND FRAMING, 8 High
Street, Lochwinnoch, PA12 4DA,
01505 844 980

Ross-shire

NORTH WEST HIGHLANDS
ART, Brynapor, Achintraid,
Strathcarron, IV54 8XB, 01520
733 227, www.nwhighlandsart.
co.uk, gillian@nwhighlandsart.
co.uk

North West Highlands Art
SOLAS GALLERY, Flowerdale
Bay, Wester-Ross, Gairloch, IV21
2BD, 01445 712626

Paintings, prints & ceramics by art-
ists Rob Howard & Lyn Beckett
HIGHLAND MUSEUM OF
CHILDHOOD, The Old Station,
Strathpeffer, IV14 9DH, 01997
421 031

GROAM HOUSE MUSEUM,
High Street, Rosemarkie, IV10
8UF, 01381 920 961

THE CROMARTY GALLERY,
20 Church Street, Cromarty, IV11
8XA, 01381 600 816

INVERGORDON ARTS CEN-
TRE, Town Hall, High Street,
Invergordon, IV18 0EL, 01349
868479

GAIRLOCH MUSEUM, Gair-
loch, IV21 2BH, 01445 712 287,
www.gairlochmuseum.org, info@gairlochmuseum.org
Until August 30

RSW ~ Summer Exhibition.
September 6 - December 17
Sarah Milteer. Story | Land.

September 6 - December 17
Lisa Fenton O'Brien. Saturation.
THE STEADINGS GALLERY,
Balmacara Square, Nr Kyle of
Lochalsh, IV40 8DJ

July 17 - 24
Sarah Coorie. One Continuous
Thread.
July 25

Duncan Currie. Past, Present +
Future.

Selkirk

SCOTTISH BORDERS COUN-
CIL (MUSEUM & GALLERY),
Municipal Buildings, High Street,
TD7 4JX, www.liveborders.org,
uk/museums_and_galleries,
chume@scotborders.gov.uk
BURNSIDE GALLERY, 48
Market place, TD4 4BL, www.burnsidegallery.co.uk
August 27 - September 20
James Hutcheson. Eardstapa. Solo
ROBSON GALLERY, Halliwell's
House, 39 Market Place, TD7 4BL
Until August 30
Ann Louise Kieran, Sheila Mac-
Neill, Mary T Johnson and Nicky
Sanderson.

Shetland

SHETLAND MUSEUM, Hay's
Dock, Lerwick, ZE1 0WP, 01595
695 057

Da Gadderie - new exhibition space
in the new Shetland Museum
Until August 10
Ron Sandford. Spirit of Places. Still
lives, landscapes, and portraits in
pencil, pen, ink, and watercolour

THE TAIT GALLERY, 11c Union
Street, Lerwick, ZE1 0ET, 01595
690 143

BONHOGA GALLERY, Weisdale
Mill, Weisdale, ZE2 9LW, 01595
830 400

VAILA FINE ART, 61 Com-
mercial Street, Lerwick, ZE1 0US,
01595 6937374

THE PICKING SHED, Lower
Voe, ZE2 9PX, ckr@krshet.
plus.com
Ongoing

Accommodation with Work Room.
The cottage is available all year

St Andrews

FIFE CONTEMPORARY ART
AND CRAFT (FCA&C), Town
Hall, Queen's Gardens, KY16
9AD, 01334 474 610

FCA&C @ ST ANDREWS
MUSEUM, Kinnesburn Park,
Doubledykes Road, KY16 9TA,
01334 659 380

FRASER GALLERY, 53 South
Street, KY16 9QR, 01334 479 647
ST ANDREWS MUSEUM
GARDENS, Kinburn Park,
Doubledykes Road, KY16 9DP,
01334 659380

Until September 27

Unearthed. Step back in time to
where it all began

Stirling

SMITH ART GALLERY &
MUSEUM, Dumbarton Road,
FK8 2RQ, 01786 471 917, www.smithartgalleryandmuseum.co.uk,
museum@smithartgallery.co.uk

Until January 1 2028 (Gallery Two)
The Man Who Could Paint Anything
- The Legacy of Thomas Stuart
Smith. Showcases

FRAMED IMAGES GALLERY,
31-33 Dumbarton Road, FK8
2LQ, 01786 451 018, [www.framed-
images.co.uk](http://www.framed-
images.co.uk), framedimages@btconnect.com

HOLY TRINITY CHURCH
HALL, Albert Place, Dumbarton
Road, FK8 2QL

THE FOTHERINGHAM GAL-
LERY, 49 Henderson Street,
Bridge of Allan, FK9 4HS, 01786
832 861

July and August 2025
Various artists. Summer 2025.

THE GREEN GALLERY, The
Coachhouse, Ballanemoch, Buch-
lyvie, FK8 3NE, 01360 850 180

BUCHLYVIE POTTERY SHOP,
Main Street, Buchlyvie, (on A811),
FK8 3LP, 01360 850 405

SMITHY GALLERY, 74/76 Glas-
gow Road, Blanefield, G63 9HX,
01360 770 551

August 2 - 30
Lesley McLaren, Amber Carter,
Nicole Stevenson. Triptych.

CREATIVE STIRLING, 44 King
Street, FK8 1AY

Sunderland

NATIONAL GLASS CENTRE,
Liberty Way, SR6 0GL, 0191
515 5555

July 12 - September 13
Mike Collier, Tom Jordan and Jane
Young. Natureá,™s Tangled Web.

Sutherland
TIMESPAN HERITAGE CEN-
TRE, Dunrobin Street, Helmsdale,

The Dunbar ceramic collection

THE NAME of the late
Sandy Dunbar, former
director of the Scottish Arts
Council, will live on thanks
to an initiative of Aberdeen
Art Gallery. His collection of
some 180 ceramic works is to
be displayed in open shelving
in the Gallery, inviting
visitors to pick up and handle
them in a display called All
Fired Up.

As the Gallery puts
it: "The gift was made on
the understanding that each
piece could be handled by
visitors to the Gallery. The
display is a new addition
to the bp Galleries on
the top floor of the Art
Gallery. It has been curated
for audiences of different
ages and levels of interest to explore the art and
science of ceramics.

"One section is displayed at low level and
is targeted at family visitors, who are invited to
explore the shapes, textures, patterns and finishes
of the pots, and find out about the techniques the
potters used to make them.

"The majority of the collection is displayed
on open shelving which evokes a potter's studio.
The shelves are packed with pots of all shapes,
sizes and finishes, from rustic earthenware
and stoneware to delicate porcelain. Some are
decorative, some are functional, from jugs



and plates to jars and cheese dishes. In the
Seminar Room visitors can find more ceramics
and discover more about the potters and their
techniques in a selection of reference books."
*Aberdeen Art Gallery, Schoolhill, Aberdeen AB10
1FQ Open Monday – Saturday, 10am-5pm and
Sunday 11am-4pm. Admission free. For visiting
information go to www.aagm.co.uk.*

ALBERTINO COSTA SCULPTURES



costasculptures@gmail.com

for free consultation call:

07917 482351

Weem Gallery
16 High St, Pittenweem, Fife
Pittenweem Arts Festival
Sat 2nd Aug - Sat 9th Aug 2025

Fine Art : Penelope Anstice, Jilly Ballantyne,
Jem Bowden, Gwen Adair

01333 311535
www.weemgalleryandframer.co.uk

To find out MORE about advertising in the
artWORK ...why not email:
ANDREW at: a.d.gordon@outlook.com
or visit...
www.artwork.co.uk

KW8 6JX, 01431 821327, www.timespan.org.uk,
enquiries@timespan.org.uk

Until September 30
Joanne Coates. Red Herring.
Highlights the long-overlooked
contributions of working-class
women's labour

Until December 31 (Fortnightly -
Saturday mornings)
Community Cinema.

BALNAKEIL CRAFT VILLAGE,
Balnakeil, Durness, IV27 4PT,
01971 511 277

Studios/galleries including: pottery,
paintings, printmaking, wood-
turning, clothes, baskets, enamelling
and jewellery

LOTTE GLOB CERAMICS, 105
Laid, Loch Eriboll, IV27 4UN,
01971 511 727

WILD TILES AND TEXTILES,
Cul Mor, Elphin, Near Ullapool,
IV27 4HH, 01854 666279

Courses in mosaic, embroidered
textiles, and creative writing
HIGHLAND STONEWARE,
Lochinver, IV27 4LP, 01571
844 376

For our complete range, and list
of stockists in your area, visit our
website

BUDDING GENIUS, 5 Church
Street, Dornoch, IV25 3LP, 01862
810 407

Tain

BROWN'S GALLERY, Castle
Brae, Ivy Lane, IV19 1AJ, 01862
893 884

GLASSTORM CONTEMPO-
RARY GLASS STUDIO & GAL-
LERY, 2 Chapel Street, IV19 1EL,
01862 893 189

Tyne & Wear

LAING ART GALLERY, Higham
Place, New Bridge Street, New-
castle upon Tyne, NE1 8AG, 0191
232 7734

Proctor & Gamble Children's Gal-
lery; Art on Tyneside.
HATTON GALLERY, University
of Newcastle, Claremont Road,
Newcastle upon Tyne, NE1 7RU,
0191 222 6057

Until July 26
Erika Servin, Nick Fox, Chris Jones,
Paul Merrick, Narbi Price, Jane
Millican, Tracey Tofield, Katie Cud-
don, Catrin Huber, Matt Antoniak,
Rachel Maclean, Christian Mieves.
Invisible Soup.

Until November 11
Mali Morris. Returning. Work
SIDE PHOTOGRAPHIC GAL-
LERY, 9 Side, Newcastle Upon
Tyne, NE1 3JE, 0191 232 2208

Time Tunnel: a whirlwind tour
through Newcastle's history; also
Science Factory

July 22 - August 30
Pete Robinson. Harvest from the
Deep. Photography

WILD AND FREE GALLERY, 3A
Ilfracombe Gardens, Whitley Bay,
NE26 3ND, [www.wildandfreegal-
lery.co.uk](http://www.wildandfreegal-
lery.co.uk)

Artist owned contemporary art
gallery

DISCOVERY MUSEUM, Bland-
ford Square, Newcastle upon
Tyne, NE1 4JA, 0191 232 6789

Until September 6, 2026
Steam to Green: A North East En-
ergy Revolution. Exploring the story
of energy in the North East

BALTIC CENTRE FOR CON-
TEMPORARY ART, Centre for
Contemporary Art, Gateshead
Quays, South Shore Road, Gates-
head, NE8 3BA, 0191 478 1810

Until February 1 2026
Saelia Aparicio. A Joyful Parasite.
Installation, sculpture and murals

SHIPLEY ART GALLERY,
Prince Consort Road, Gateshead,
NE8 4JB, 0191 477 1495

Permanent exhibition
Designs for Life. Objects from
around the world

ARTS CENTRE WASHINGTON,
Biddick Lane, Washington, NE38
8AB

July 17 - August 30
Schr. Jalil and Padma Rao. Where
Were You Last Summer?.

Ullapool

THE CEILIDH PLACE, 14 West
Argyle Street, IV26 2TY, 01854
612 103, www.theceilidhplace.com,
jean@theceilidhplace.com

Cafe/Bar/Shop. Programme of
Events and Exhibitions. Comfortable
Accommodation

RHUEART GALLERY, RhueArt
Ltd, Rhue, IV26 2TJ, 01854
612460, www.rhueart.co.uk,
[flickr@rhueart.co.uk](https://www.flickr.com/photos/rhueart/)

THE HARBOUR GALLERY, Ar-
gyll Street, IV26 2UB, 01854 612

282, www.theharbourgallery.com
Original art, contemporary, retro and
vintage; framed/mounted prints

HIGHLAND STONEWARE,
North Road, Wester Ross, IV26
2UN, 01571 844 376

AN TALLA SOLAIS, Ullapool
Visual Arts, Market Street, IV26
2XE, 01854 612 310

Until August 17
Peter White. Where the Line is
Drawn. Drawings, paintings, pho-
tography and 3d works, with words
by Raja Shehadeh

August 30 - October 23
Various artists. Member's Show
2025.

LAEL CRAFTS GALLERY, 3
Lael, IV23 2RS

Wigtownshire

STRANRAER MUSEUM, 55
George Street, Stranraer, DG9
7JP, 01776 705 088

WILLIAM NEAL PAINTINGS,
24 Ryan Gardens, Innermes-
san, Stranraer, DG9 8QP, 01776
706 953

Moonlight & Dusk themes of Gal-
loway in watermedia
HOOPOE PRINTS, Seymour
House, 25 High Street, Port Wil-
liam, Newton Stewart, DG8 9SL,
01988 700 392

Range of original prints of birds and
landscape by Lisa Hooper
WHITHORN VISITOR
CENTRE, 45 - 47 George Street,
Whithorn, DG8 8NS, 01988
500 508

KEVAN MCGINTY PAINTINGS,
The Studio, 107 George Street,
Whithorn, Newton Stewart,
DG8 8PZ

Atmospheric landscapes from the
Scottish Highlands and lowlands
LOGAN BOTANIC GARDEN,
Port Logan, Near Stranraer,
Dumfries & Galloway, DG9 9ND,
01776 860231

Yorkshire

IMPRESSIONS GALLERY,
Centenary Square, 29 Castlegate,
Bradford, BD1 1SD, 01904 654724

Until August 23
Clare Hewitt. Everything in the
forest is the forest.

YORK ART GALLERY, Exhibi-
tion Square, York, YO1 7EW,
01904 687 687

Until August 31
Harland Miller. XXX.

NATIONAL SCIENCE AND
MEDIA MUSEUM, Pictureville,
Queensbury, Bradford, BD1 1NQ,
01274 203 305

Until February 22 2026
You:Matter. Blends art, science and
creative technologies

YORKSHIRE SCULPTURE
PARK, West Bretton, Wakefield,
WF4 4LG, 01924 832631

Monumental porcelain sculptures
Until October 26
Lesley Barnes and Ross McAuley.
Fashion Play.

GALLERY ON THE GREEN,
The Curator, Gallery on the
Green, Upper Settle, BD24 9HG,
07908 792 713

THE GALLERY UPSTAIRS, Off
Main Square, (above Harlequin),
Grassington, BD23 5AT, 01756
753099

JANETTE RAY BOOKSELL-
ERS, 8 Bootham, YO30 7BL,
01904 623 088

GALLERY 49, 1 Market Place,
Old Town Bridlington, YO16 4JJ,
01262 679472

THE ART HOUSE, Drury Lane,
Wakefield, WF1 2TE, 01924
312000

Until July 31
Alice Clayden.

Until August 31
Permindar Kaur, Sam Metz, Robert
Broad, Bijan Amini-Alavijeh, Kedi-
sha Coakley, Hang Zhang, Madhu
Das, Tony Wade and Mohammad
Barrangi.

BRIDLINGTON CONTEMPO-
RARY GALLERY, 3 West Street,
Bridlington, YO15 3DX

WALKER GALLERIES CON-
TEMPORARY ART, 13 Montpel-
lier Parade, Harrogate, HG1 2TJ,
01423 526366

KENTMERE HOUSE GAL-
LERY, 53 Scarcroft Hill, York,
YO24 1D

Original paintings by artists from the
region and beyond

THE MERCER ART GALLERY,
31 Swan Road, Harrogate, HG1
2SA, 01423 556188

Until October 5
Liz West. H.A.P.P.Y. Experience a
dazzling interplay of light, space and
reflection

E: a.d.gordon@outlook.com

For Advertising...

ArtWork

Full Year Courses

Short Courses

Weekend Workshops

Online Workshops

Summer Courses

P A I N T B O X

S C H O O L

O F

A R T

At Paintbox, we pride ourselves in offering high quality teaching by Professional Artists to small groups of students, from beginners right through to established practising Artists.

We offer a wide range of courses over varying timescales to allow you to find the best path for your own work. From Weekend Workshops to 5 & 10 Week Courses, our Professional Development Year Long Course, The Painting Year, and much more, we are sure there will be something to whet your appetite!

paintboxartclasses.com
enquiries@paintboxartclasses.com

Paintbox School of Art, Cockenzie
House & Gardens, East Lothian
EH32 0HY

